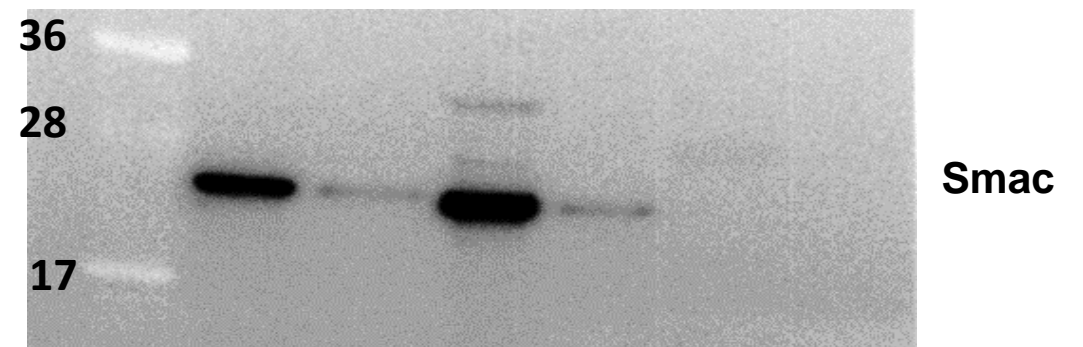
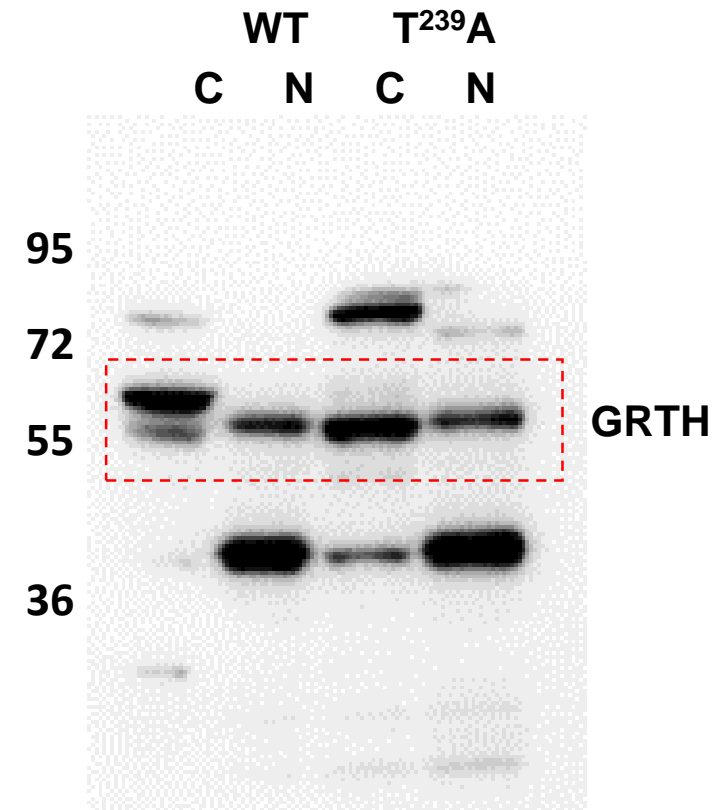
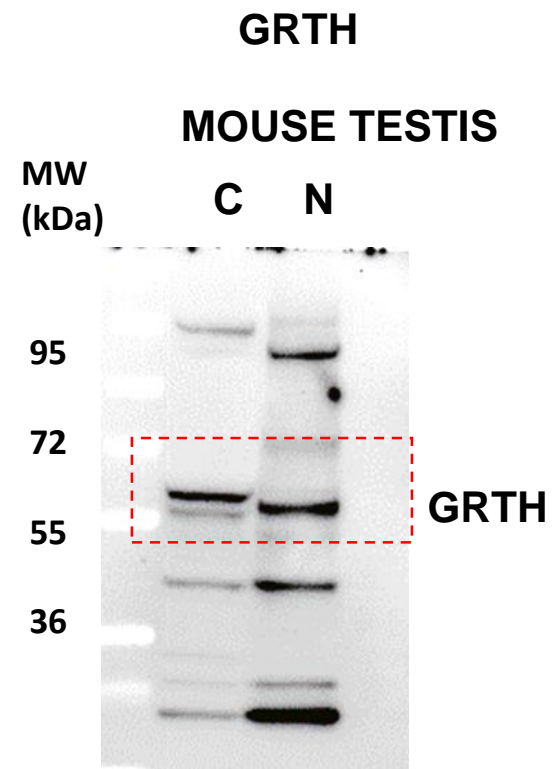


**Characterization of the Phosphorylation Site of GRTH/DDX25 and Protein Kinase A Binding Interface  
Provides Structural Basis for the Design of a Non-Hormonal Male Contraceptive**

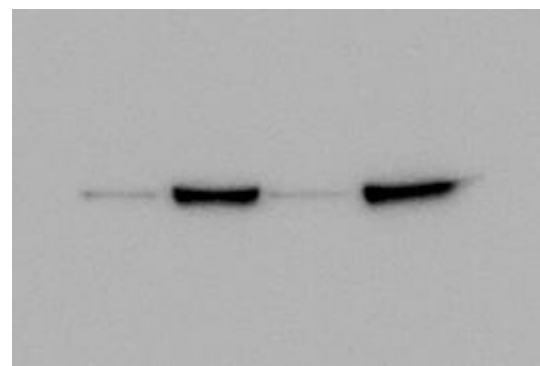
Murugananthkumar Raju<sup>1,a</sup>, Sergio A. Hassan<sup>2,a</sup>, Raghuveer Kavarthapu<sup>1</sup>, Rajakumar Anbazhagan<sup>1</sup> and Maria L. Dufau<sup>1\*</sup>

<sup>1</sup> Section on Molecular Endocrinology, Division of Developmental Biology, Eunice Kennedy Shriver National Institute of Child Health and Human Development; <sup>2</sup> Center for Molecular Modeling, OIR/CIT, National Institutes of Health, Bethesda, MD 20892-4510

Fig. S1



HDAC1



$\beta$ -actin

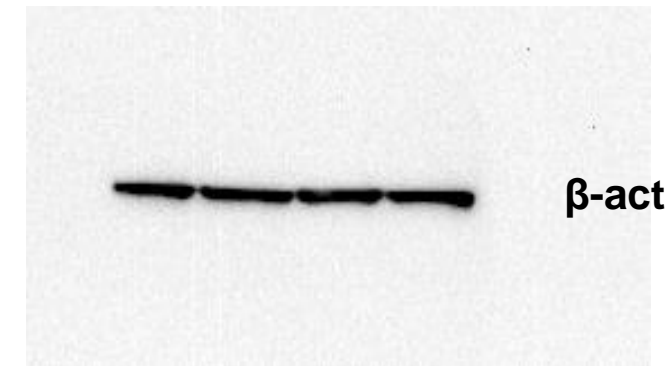


Fig. S2

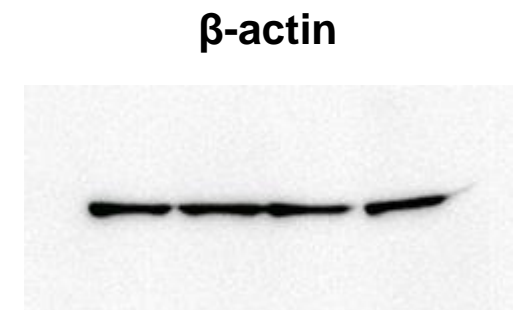
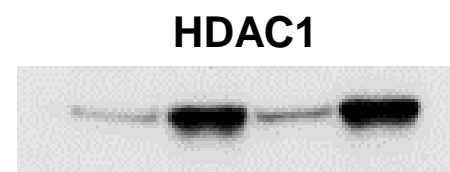
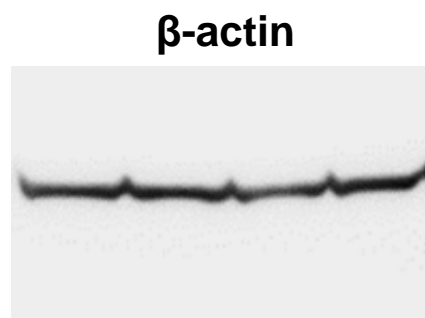
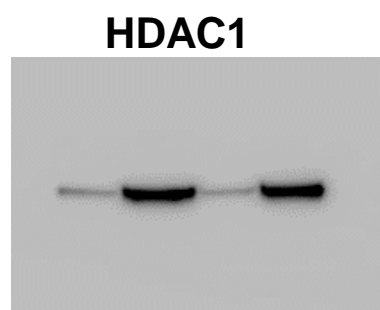
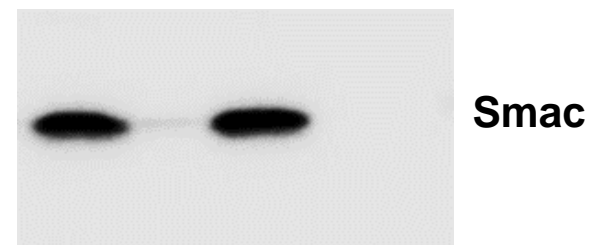
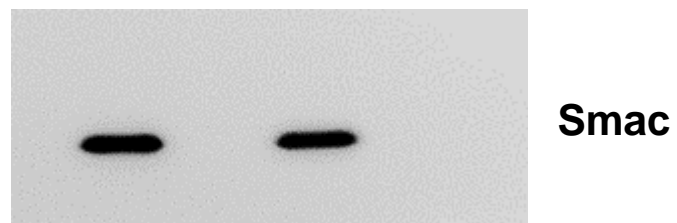
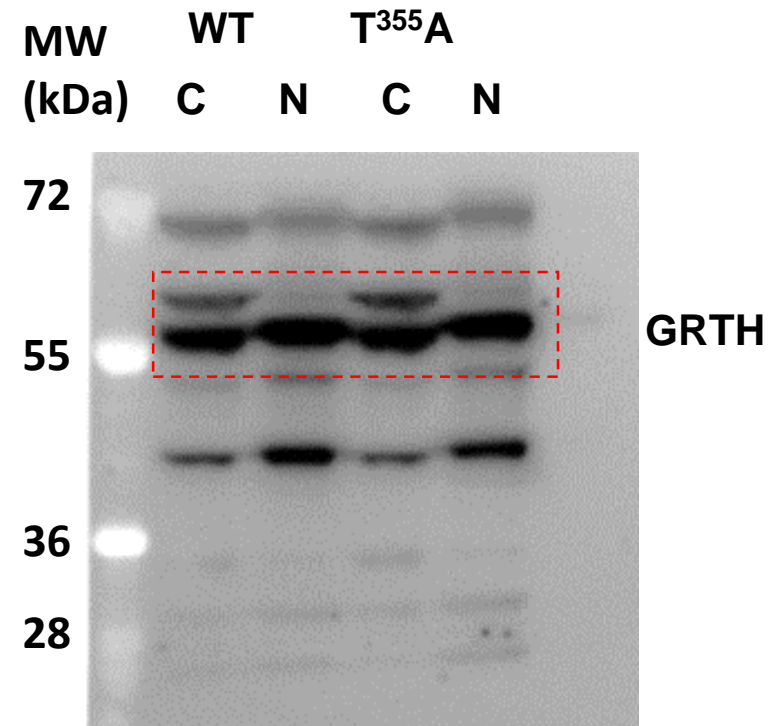
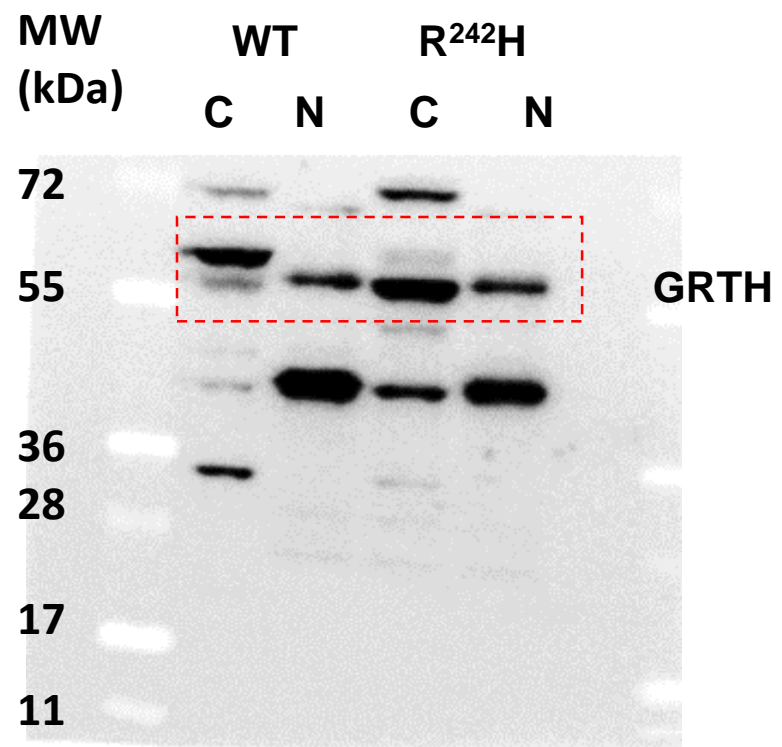


Fig. S3

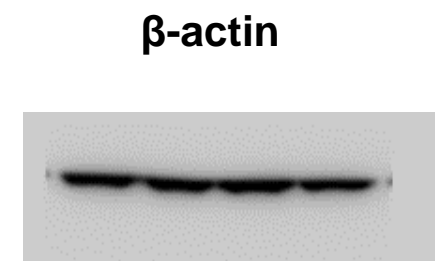
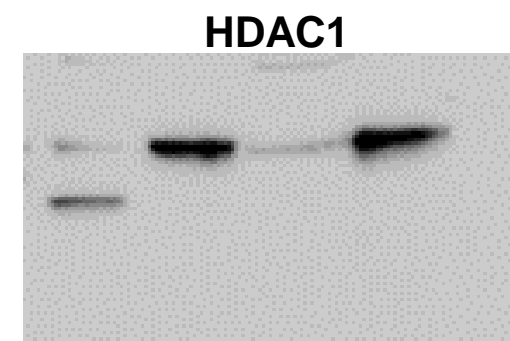
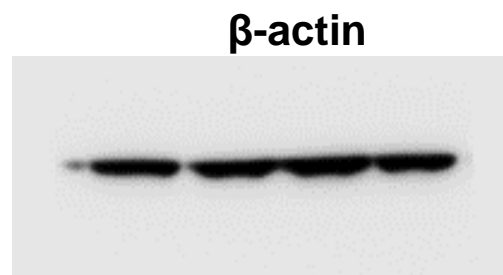
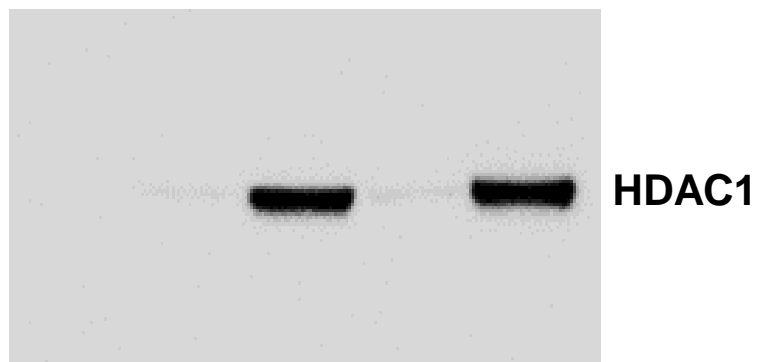
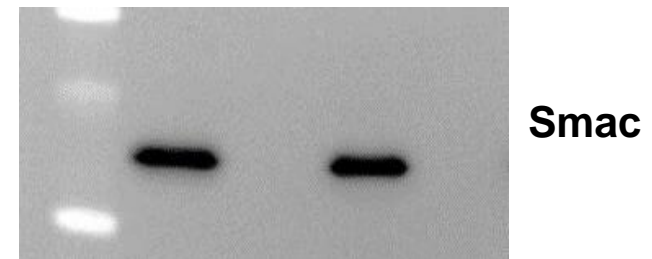
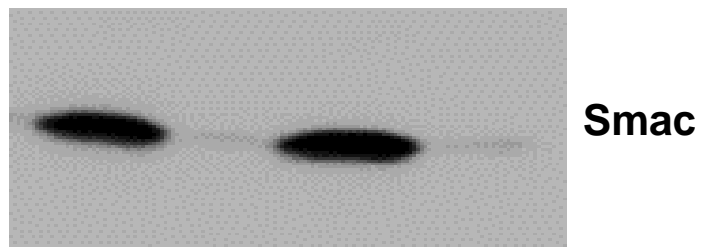
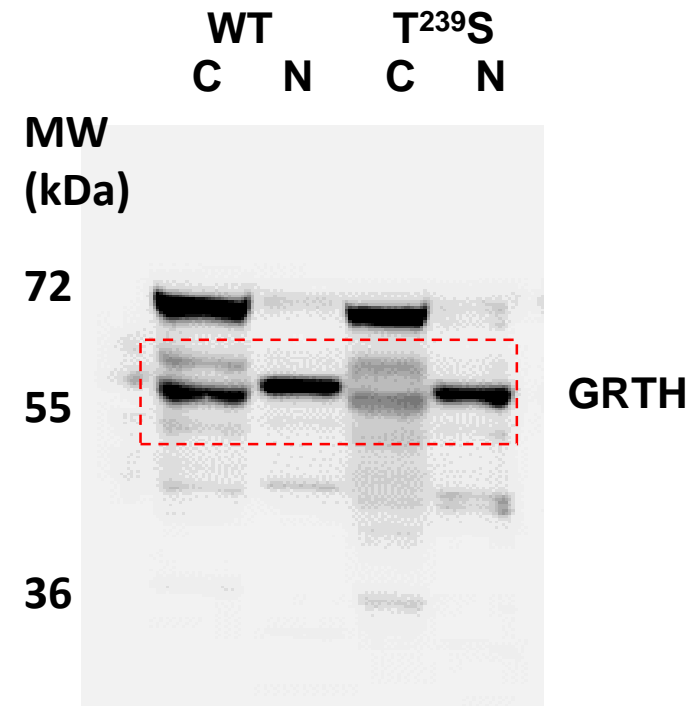
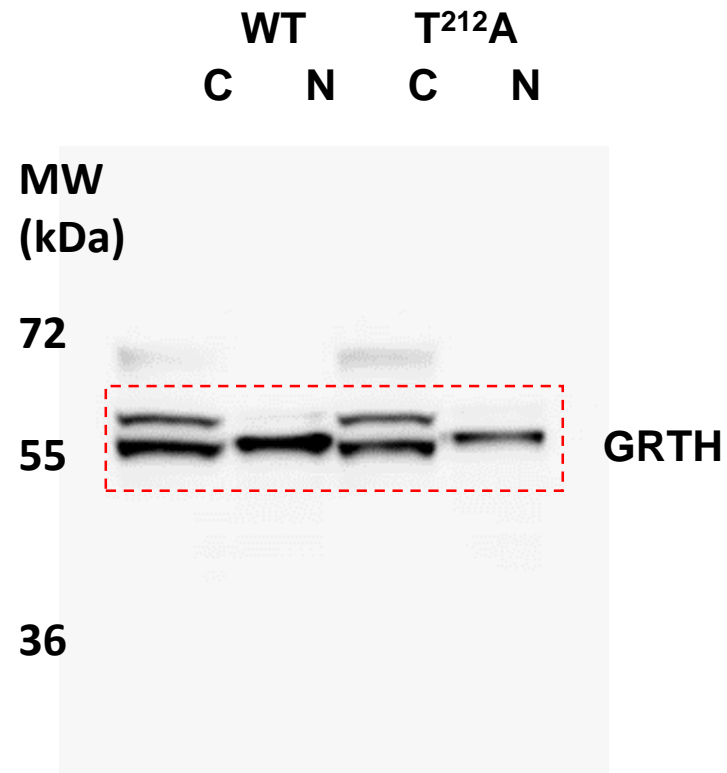


Fig. S4

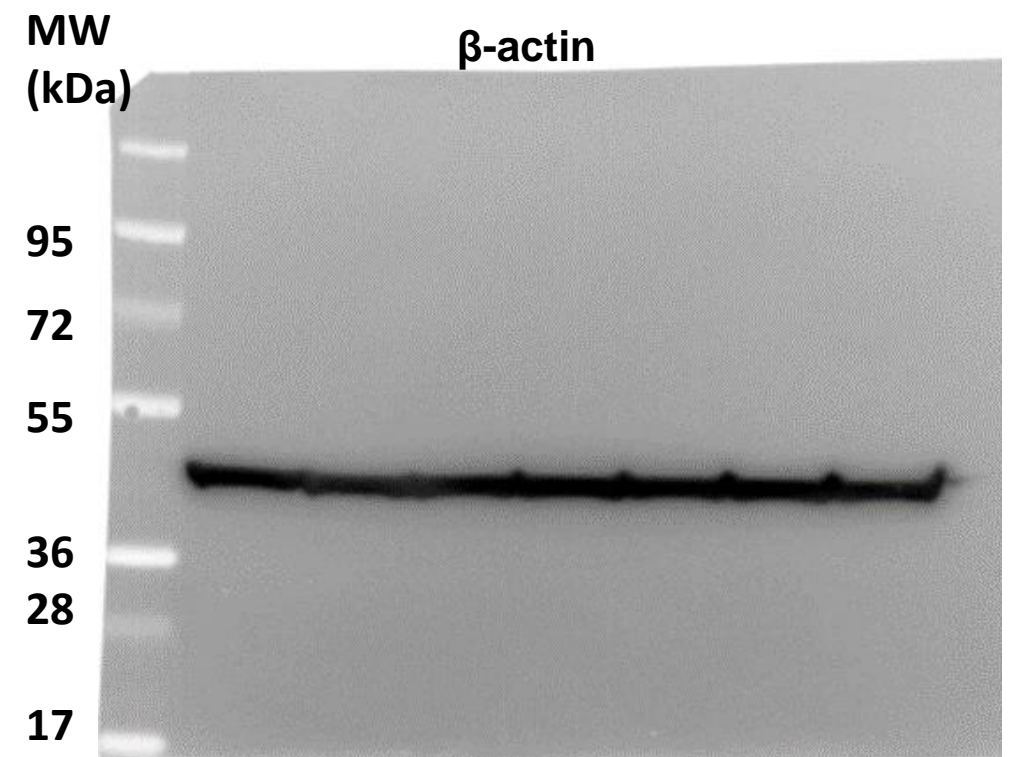
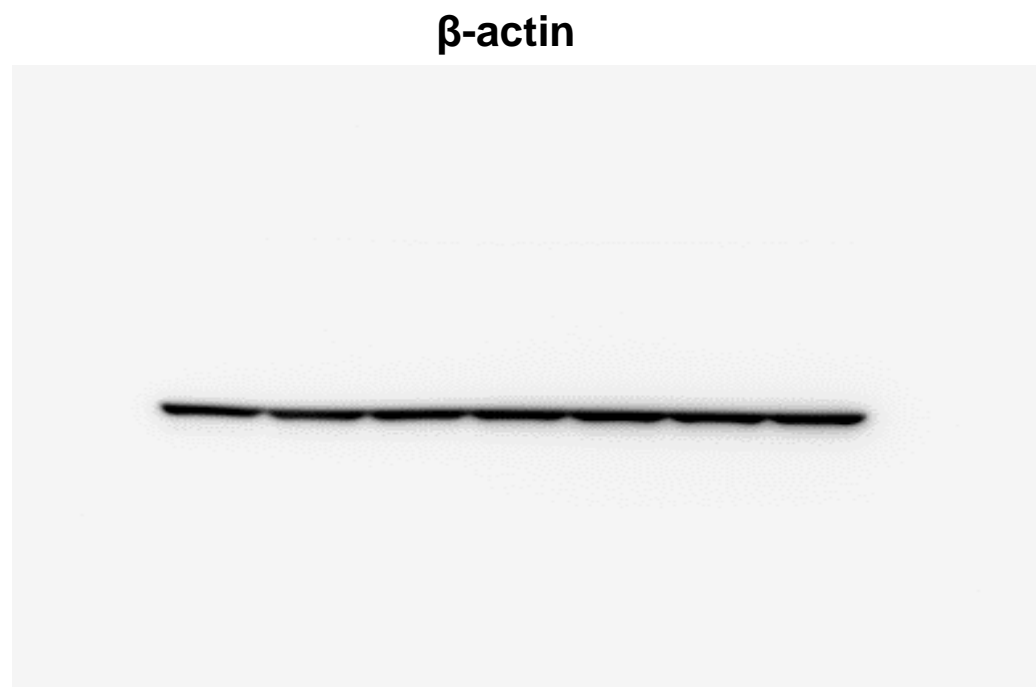
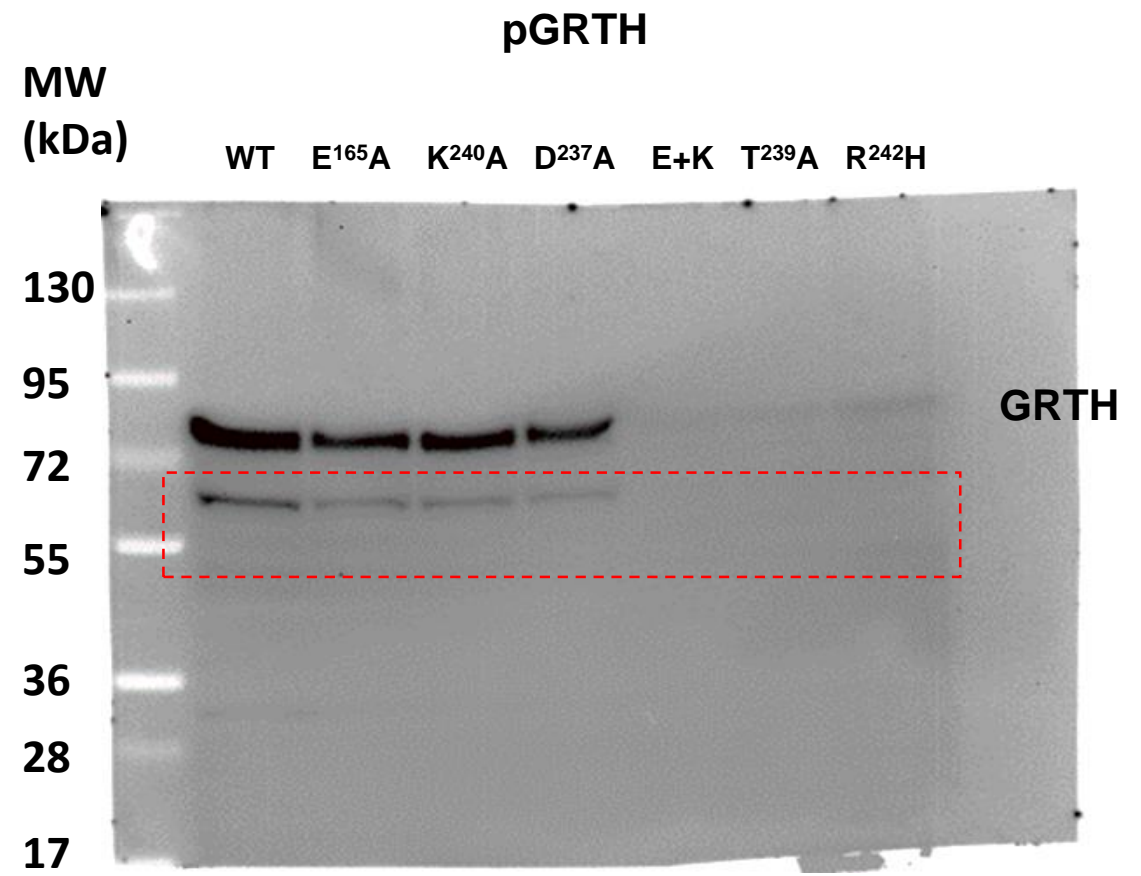
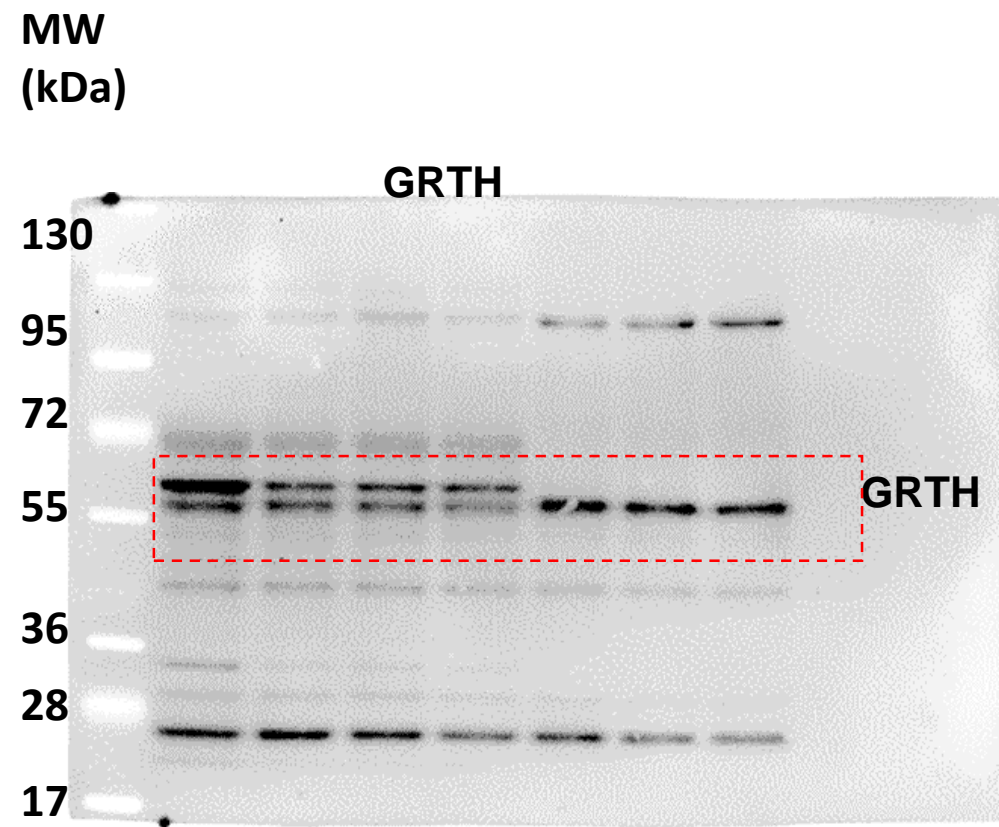


Fig. S5

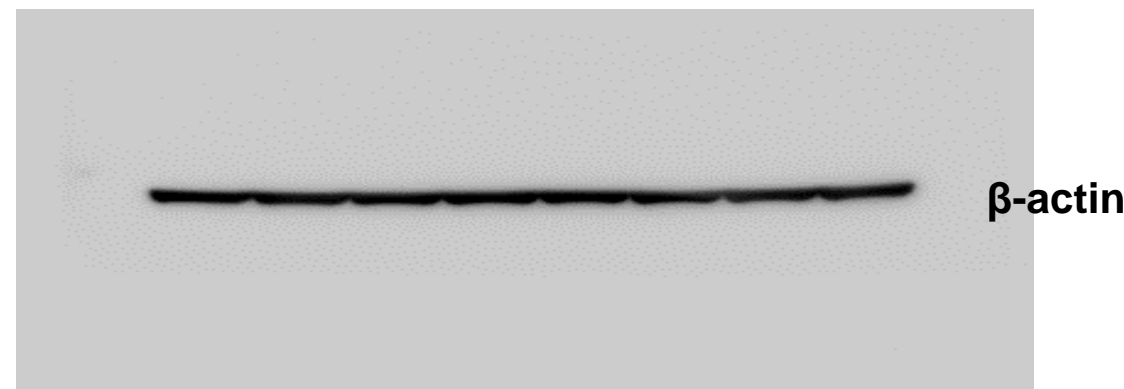
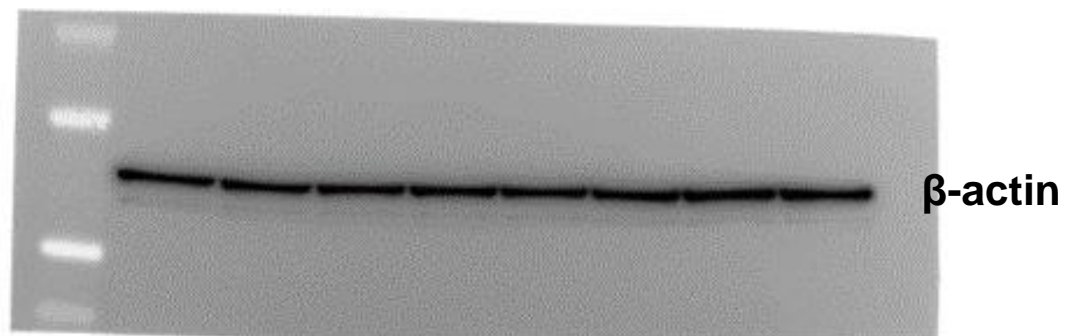
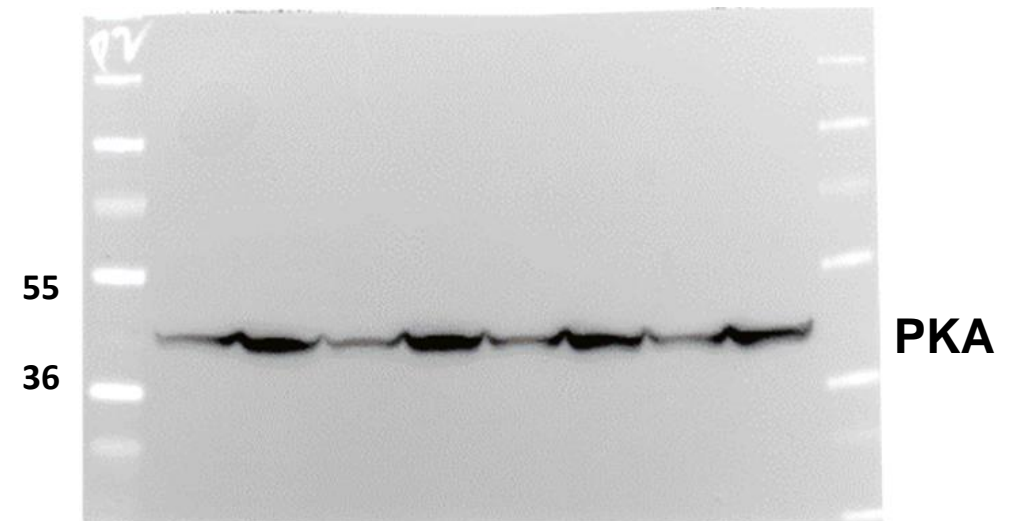
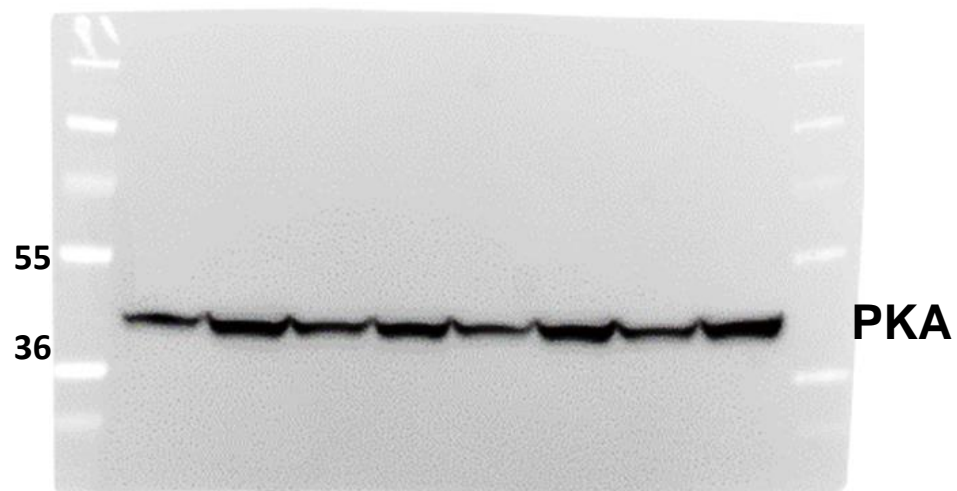
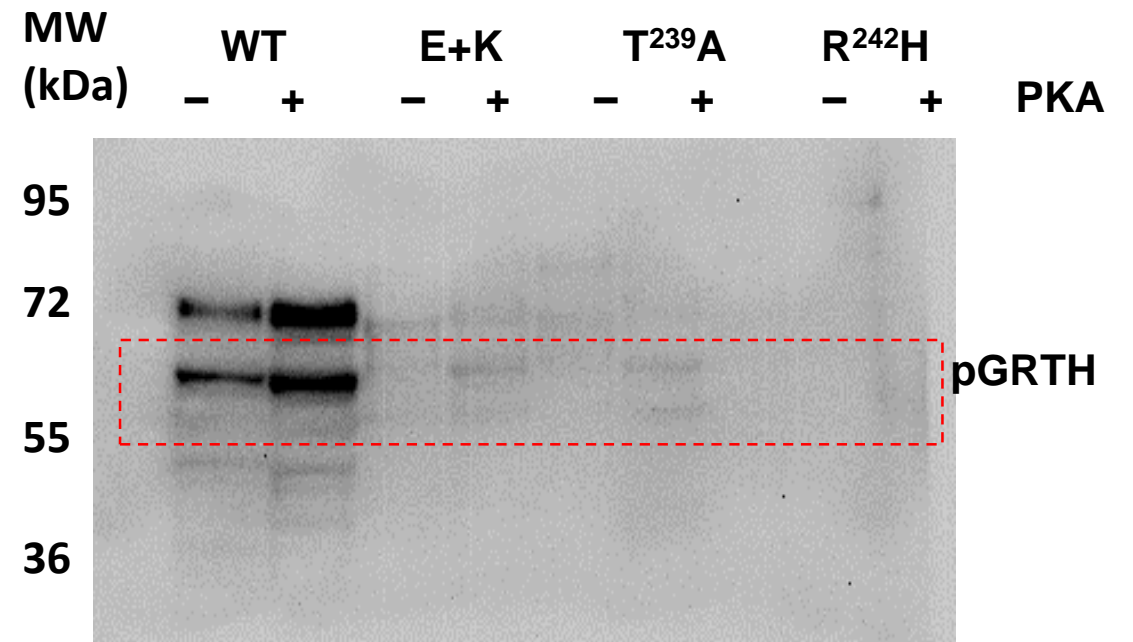
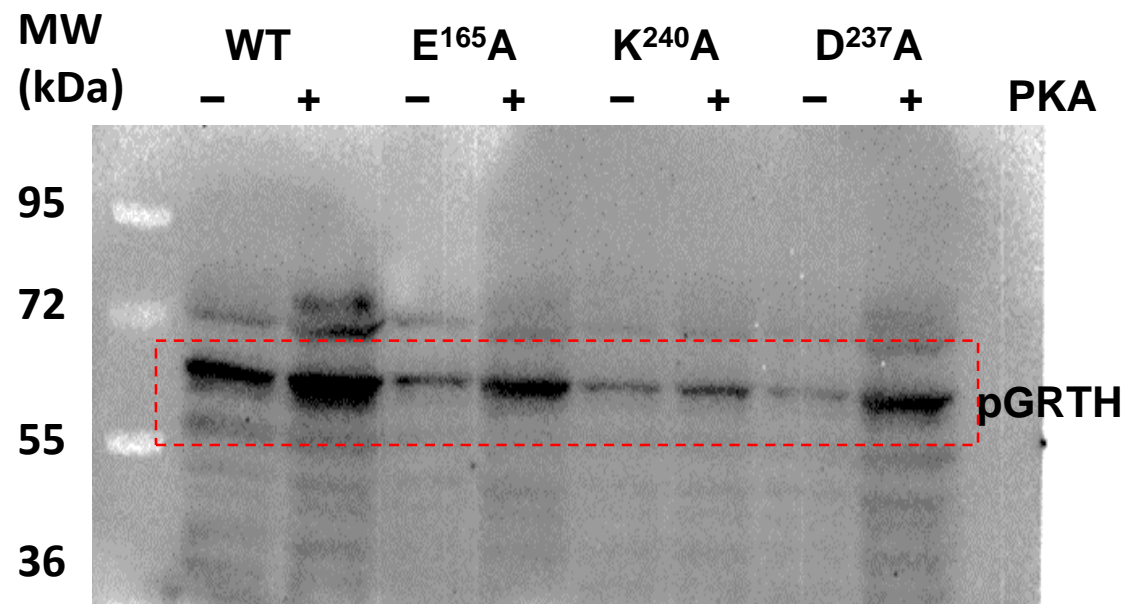


Fig. S6

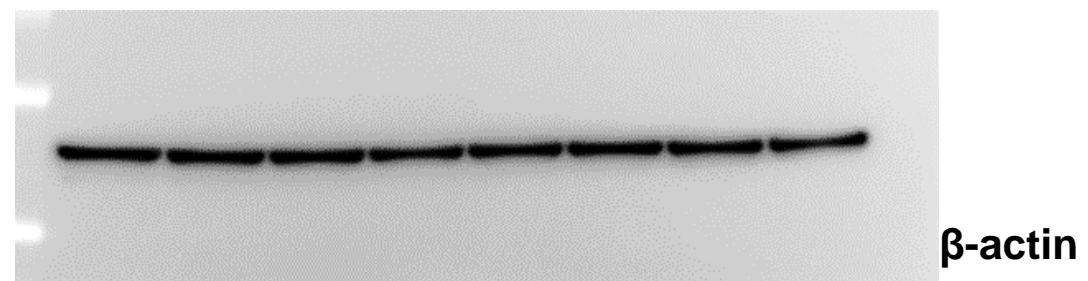
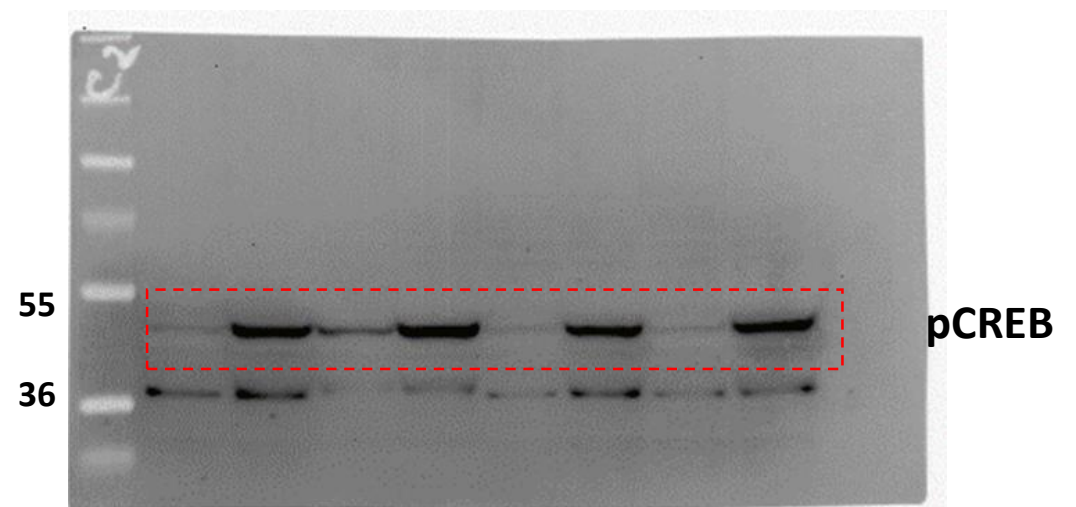
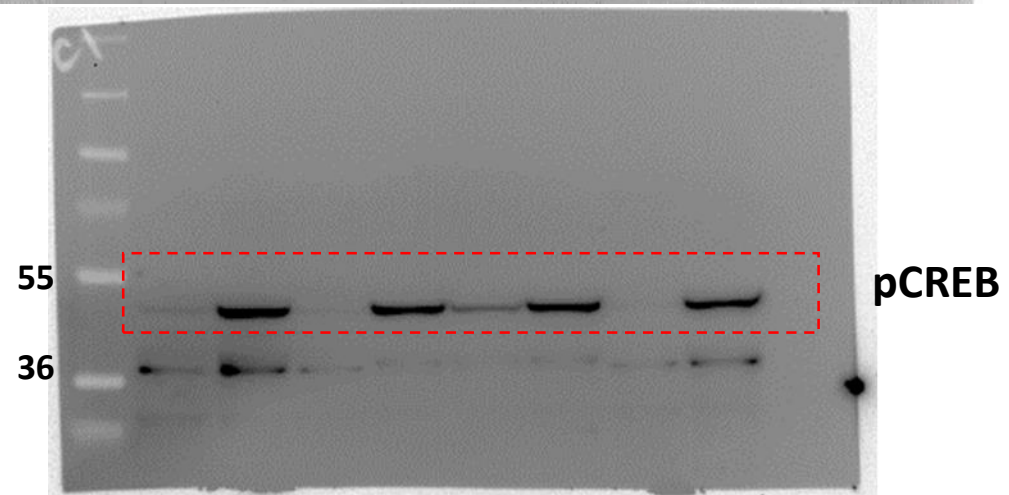
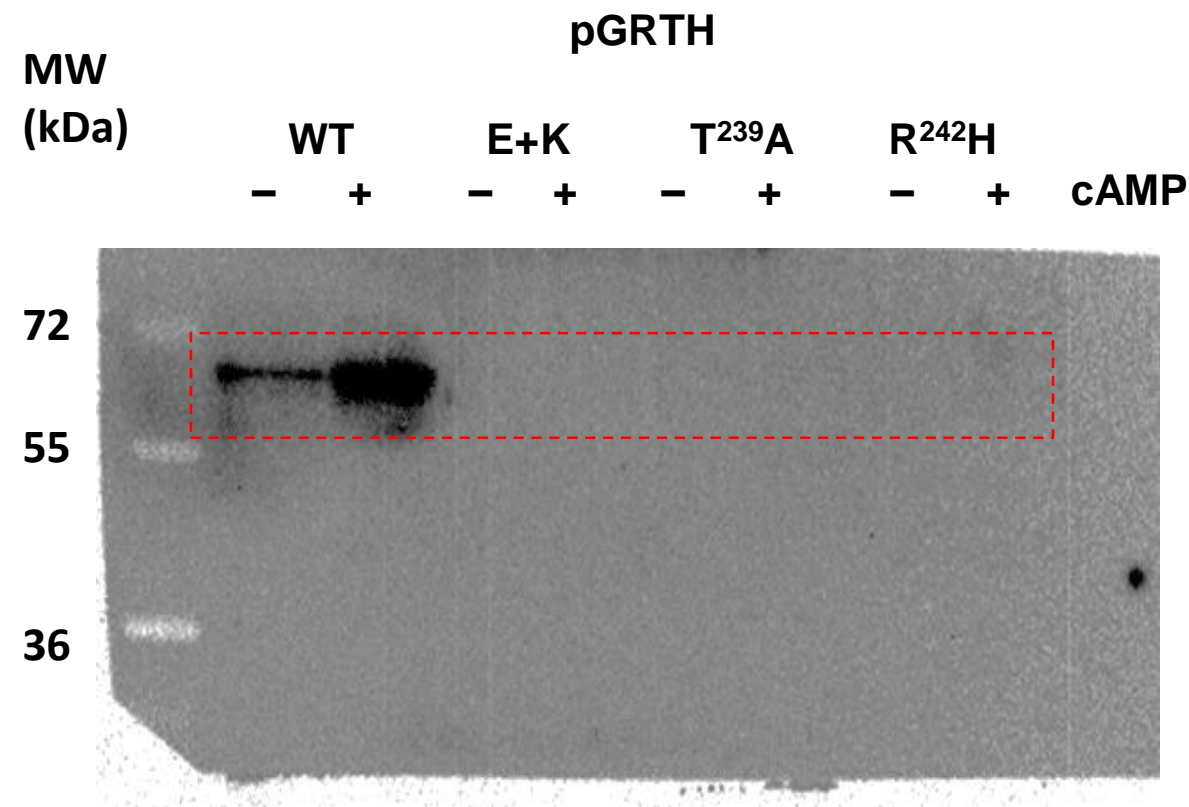
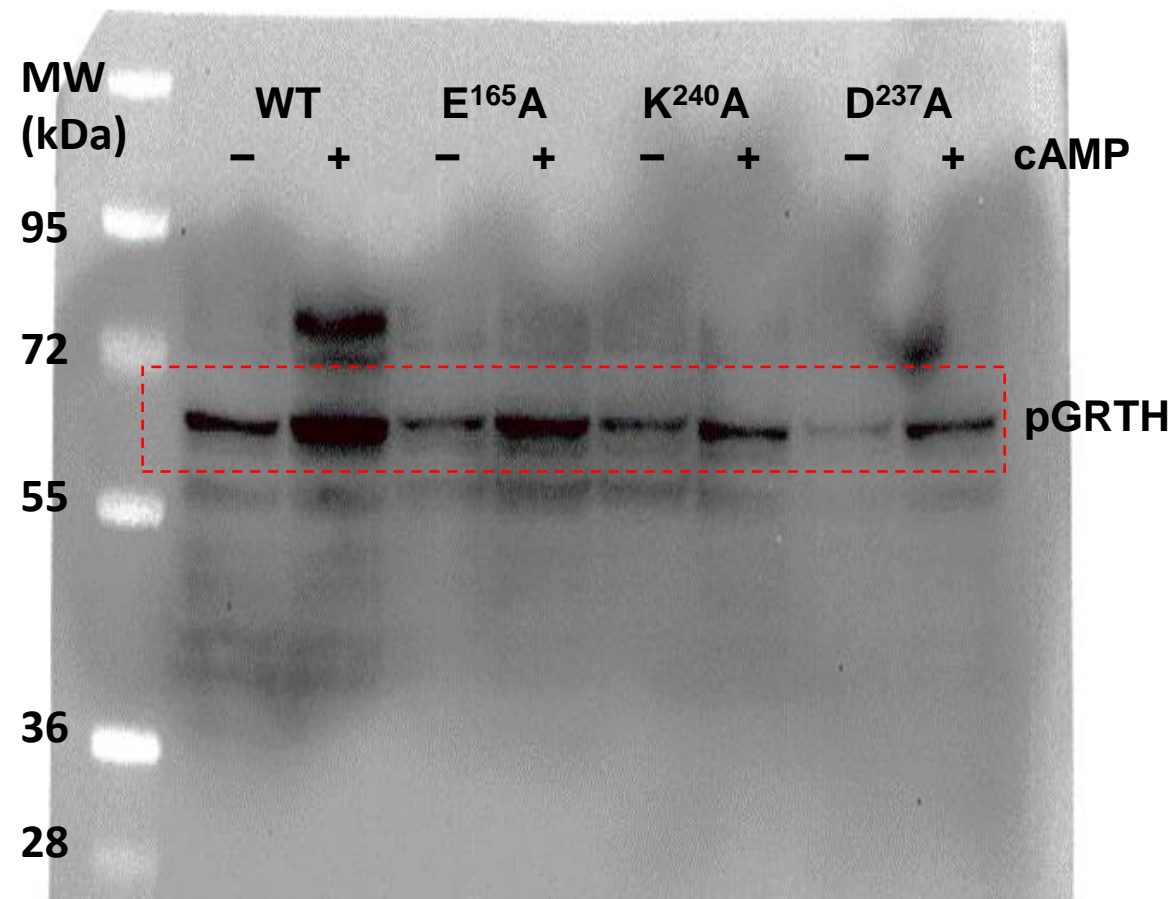


Fig. s7

GRTH interaction with endogenous PKA

GRTH interaction with exogenous PKA

