

A quantitative method for evaluating cortical responses to electrical stimulation

Lawrence J. Crowther, Peter Brunner, Christoph Kapeller, Christoph Guger, Kyousuke Kamada, Marjorie E. Bunch, Bridget K. Frawley, Timothy M. Lynch, Anthony L. Ritaccio, Gerwin Schalk

Supplementary Figure

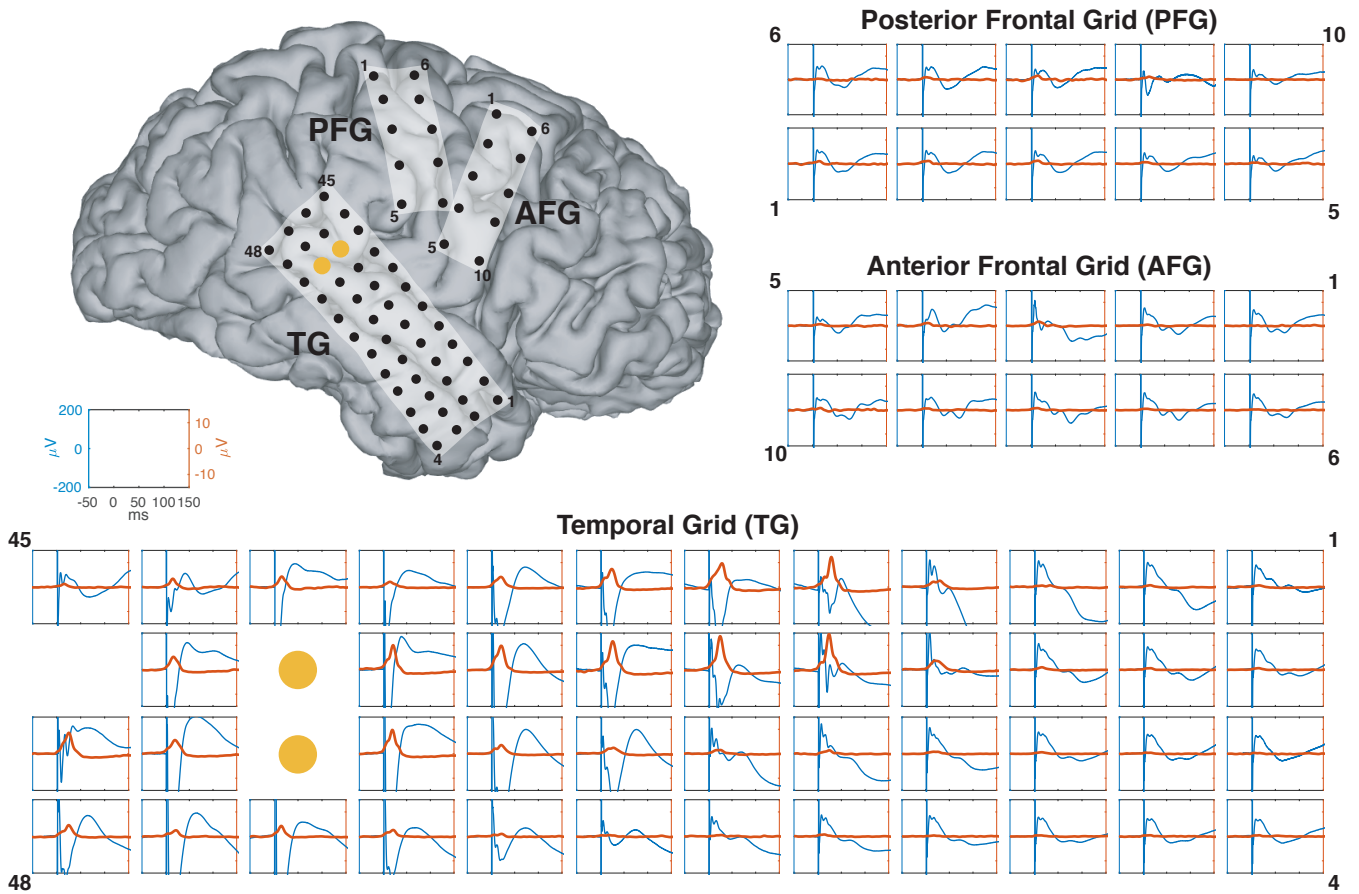


Figure S1: Comparison of traditional evoked potentials (blue traces) and broadband gamma activity measured with SIGNI (red traces) for one stimulation pair (yellow dots) in subject H. These data show ERP/broadband gamma responses for all electrodes in Fig. 8. The brain model shows the location of three electrode arrays: Temporal Grid (TG), Posterior Frontal Grid (PFG), and Anterior Frontal Grid (AFG). The surrounding time courses qualitatively compare evoked potentials (blue traces) and broadband gamma responses (red traces) for all electrodes represented on the brain model. (Electrode 46 on the TG grid had artifactual signals.)