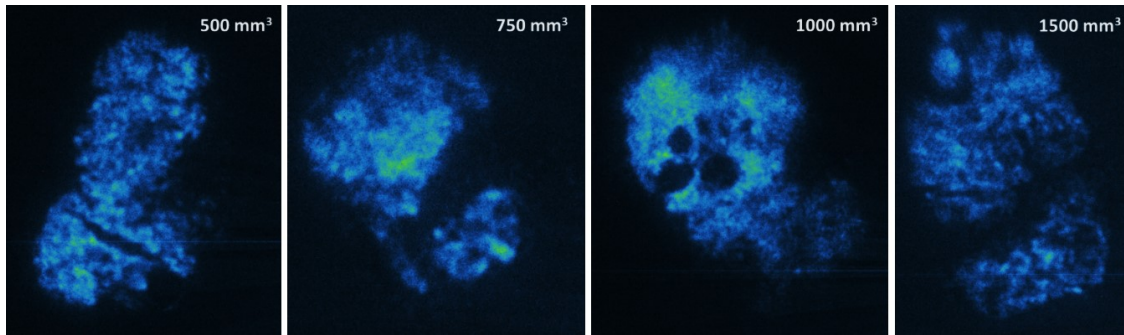


A



B

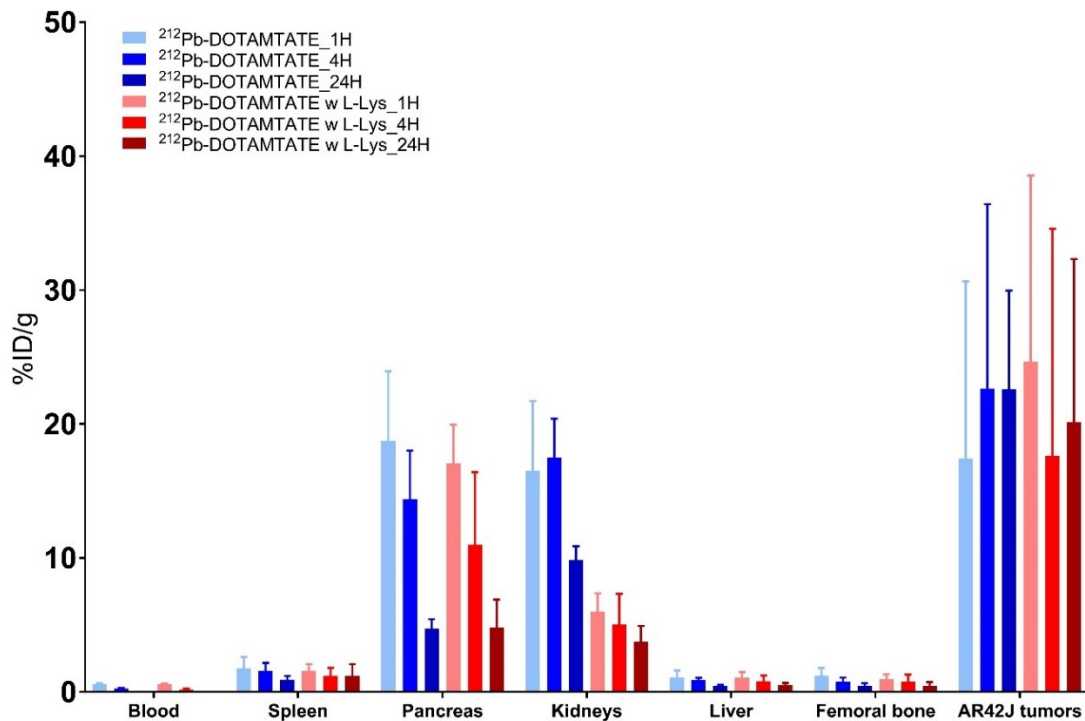


Figure S4. Drug Microdistribution Through Tumor and Effect of Kidney Protection Agent. Figure S4 shows Alpha-imaging of $^{212}\text{Pb-DOTAMTATE}$ and biodistribution of $^{212}\text{Pb-DOTAMTATE}$ in AR42J-tumor bearing mice with kidney protection agent, L-lysine. A. Microdistribution of $^{212}\text{Pb-DOTAMTATE}$ in cryosectioned AR42J xenograft tissue samples imaged using a high-sensitivity QHYCCD camera. Panel A show tumor sections of increasing tumor sizes (500mm^3 to 1500mm^3) B. $200\mu\text{L}$ of L-Lys (35mg) in saline (red gradient) was given IV five minutes before drug injection. No kidney protection agent control shown in blue gradient. Five athymic nude mice per group. %ID/g shown at 1 hour, 4 hours and 24 hours post injection in various organs.