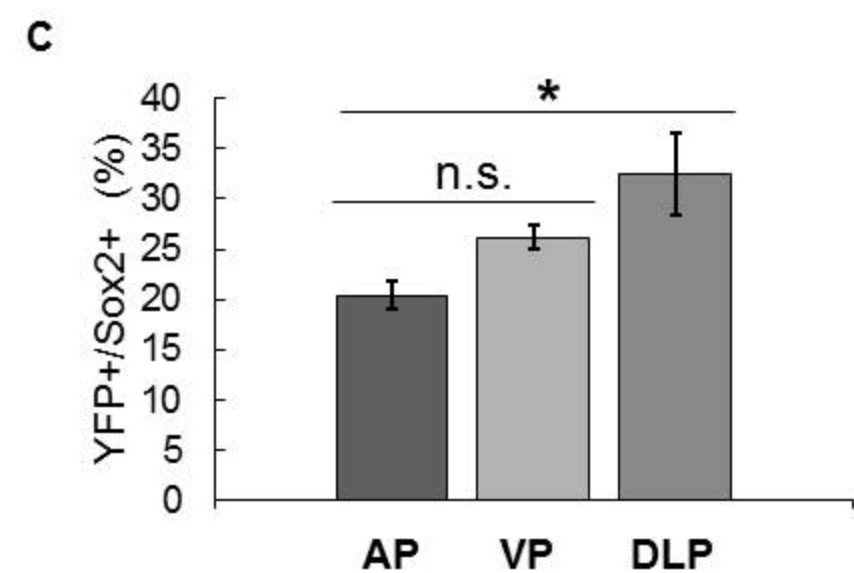
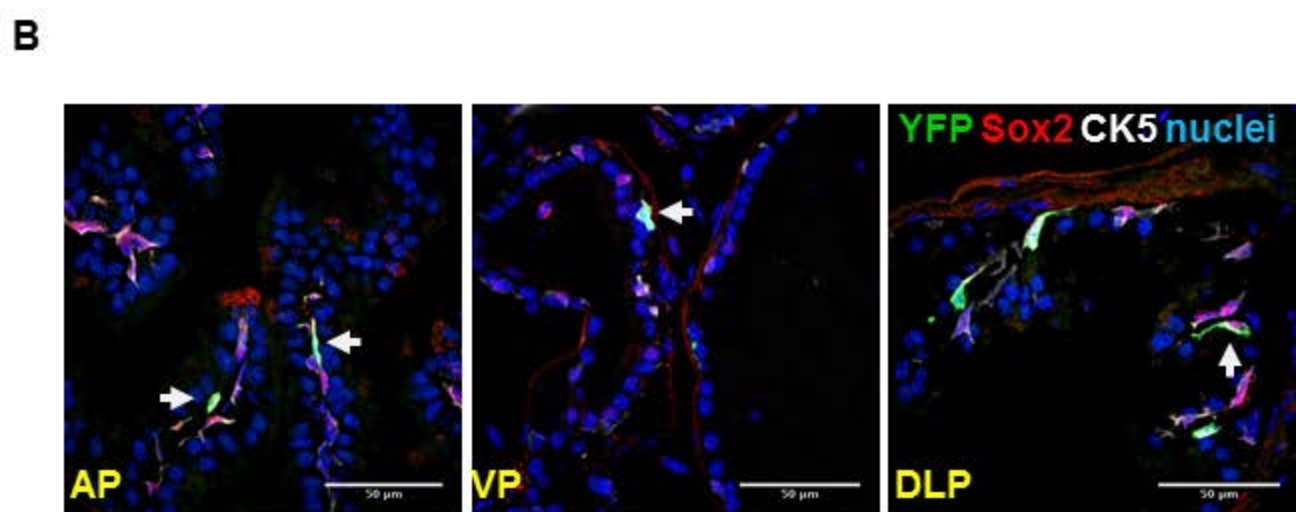
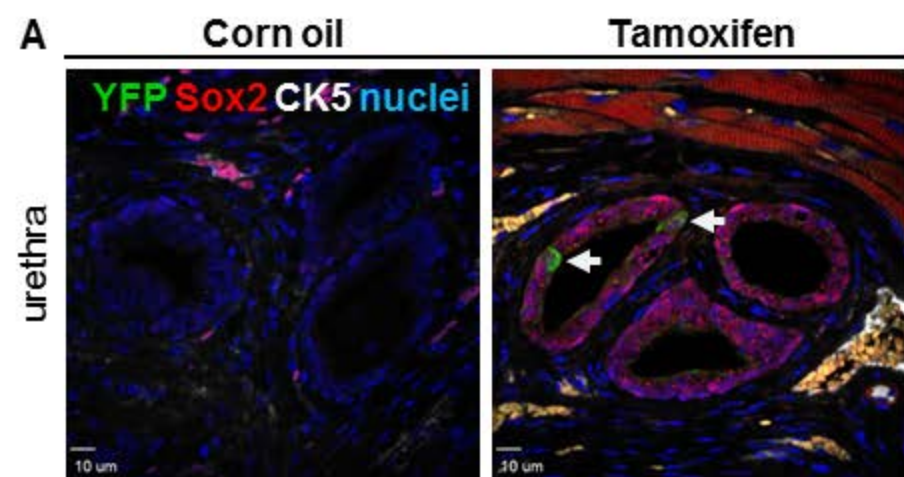
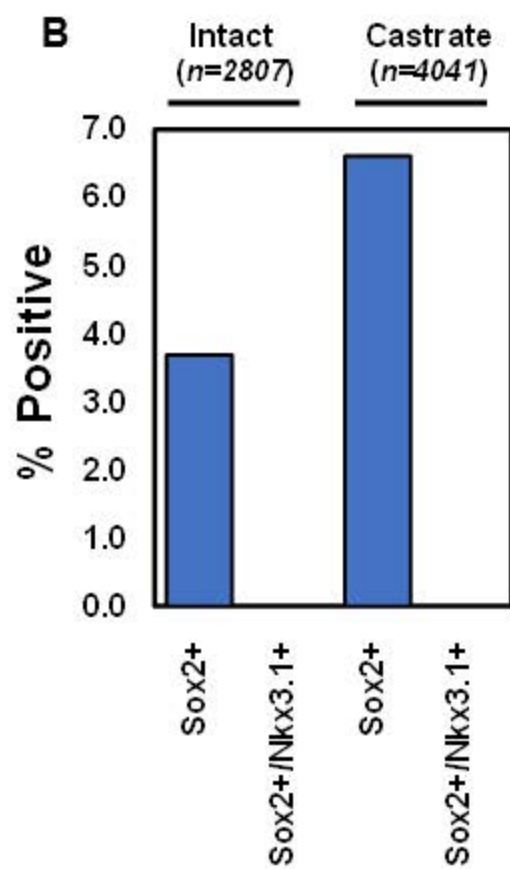
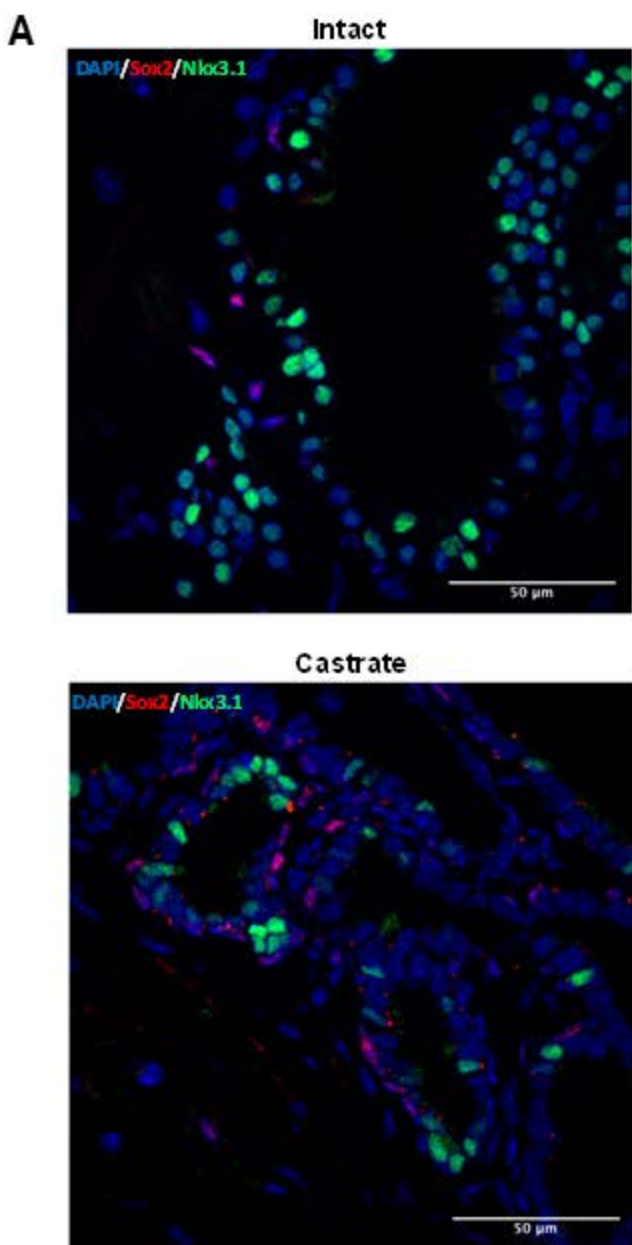


Supplemental Figure 1: McAuley et al.





| Primary antibodies (catalog number) | Source | Antibody Registry Identifier |
|--|------------------------|-------------------------------------|
| Chicken polyclonal anti-GFP (ab13970) | Abcam | AB_300798 |
| Rabbit polyclonal anti-CK5 (905501) | Biolegend | AB_2565050 |
| Rabbit monoclonal anti-CK8+18 (ab53280) | Abcam | AB_869901 |
| Mouse monoclonal anti-p63 clone 4a4 (PTA-6626) | ATCC | |
| Rabbit monoclonal anti-Ki67 clone SP6 (ab16667) | Abcam | AB_302459 |
| Goat polyclonal anti-Sox2 (AF2018) | R&D Systems | AB_355110 |
| Rabbit monoclonal anti-Nkx3.1 (0315) | Athena | AB_2335607 |
| | | |
| Secondary antibodies (catalog number) | | |
| Alexa Fluor® 594 AffiniPure F(ab') ₂ Fragment Donkey Anti-Goat IgG (H+L) (705-586-147) | Jackson ImmunoResearch | AB_2340434 |
| Alexa Fluor® 594-AffiniPure Donkey Anti-Mouse IgG (H+L) (715-585-150) | Jackson ImmunoResearch | AB_2340854 |
| Alexa Fluor® 594-AffiniPure F(ab') ₂ Fragment Donkey Anti-Rabbit IgG (H+L) (711-586-152) | Jackson ImmunoResearch | AB_2340622 |
| Alexa Fluor® 488 AffiniPure F(ab') ₂ Fragment Donkey Anti-Chicken IgY (IgG) (H+L) (703-546-155) | Jackson ImmunoResearch | AB_2340376 |
| Alexa Fluor® 488 AffiniPure F(ab') ₂ Fragment Donkey Anti-Rabbit IgG (H+L) (711-546-152) | Jackson ImmunoResearch | AB_2340619 |
| Alexa Fluor® 488 AffiniPure F(ab') ₂ Fragment Donkey Anti-Mouse IgG (H+L) (715-546-150) | Jackson ImmunoResearch | AB_2340849 |
| Alexa Fluor® 647 AffiniPure Donkey Anti-Mouse IgG (H+L) (715-605-150) | Jackson ImmunoResearch | AB_2340862 |