

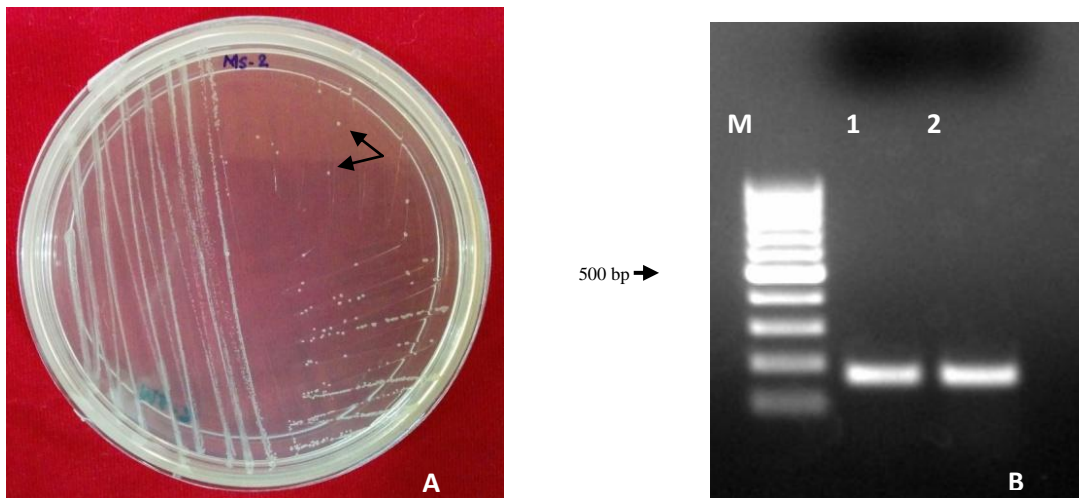
Title: Phylogenetic relationship among Indian population of *Fusarium oxysporum* f. sp. *lentis* infecting lentil and development of specific SCAR markers for detection

Journal name: 3 Biotech

Authors: Neelakanth S. Hiremani and Sunil C. Dubey

Affiliation: Division of Plant Pathology, ICAR-Indian Agricultural Research Institute, New Delhi- 110012, India

***Corresponding author:** scdube2002@yahoo.co.in



Online resource 3. The plate showing the white colonies after streaking a single colony from master plate on the Luria agar plate amended with IPTG, X-gal and ampicillin (sub-plate) after overnight incubation at 37°C (A), the arrows indicate single white transformed colonies. The gel picture (B) shows the amplification of inserted DNA through colony polymerase chain reaction for MS 2 marker. Lanes M- 100 bp ladder, 1- FLS 23 and 2- FLS 75.