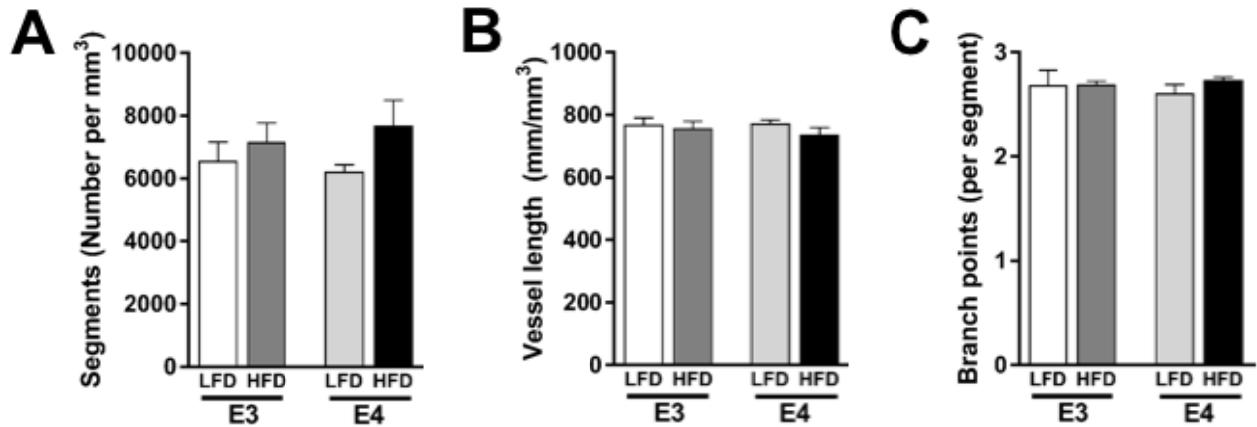


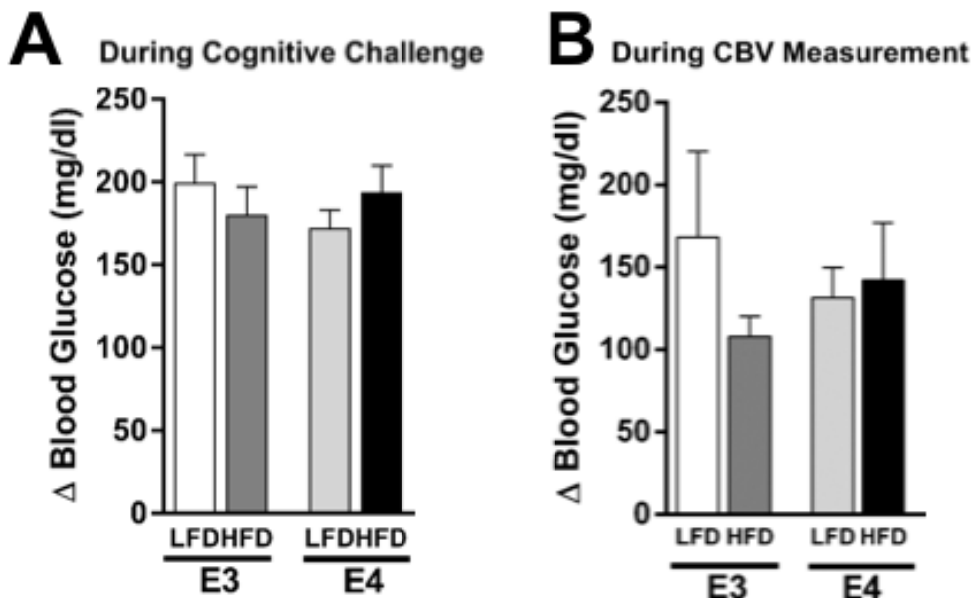
### Supplemental Figure 1



### Supplemental Figure 1. *APOE* Genotype and HFD do not Alter Vessel Morphology.

A) The number of vessels is not significantly altered by *APOE* genotype or diet.  $n = 7-8$ . B) Mean vessel length is not significantly altered by *APOE* genotype or diet.  $n = 7-8$ . C) Vessel complexity, as measured by branching, is not significantly altered by *APOE* genotype or diet.  $n = 7-8$ .

### Supplemental Figure 2



### Supplemental Figure 2. Blood Glucose Concentrations are Similar Following Glucose

Gavage or Injection. A) Change in blood glucose following a glucose gavage and water maze probe session (15 minute time point minus OTP). B) Change in blood glucose following an I.V. injection of glucose and OMAG scan (15 minute time point minus OTP).  $n = 7-8$ .