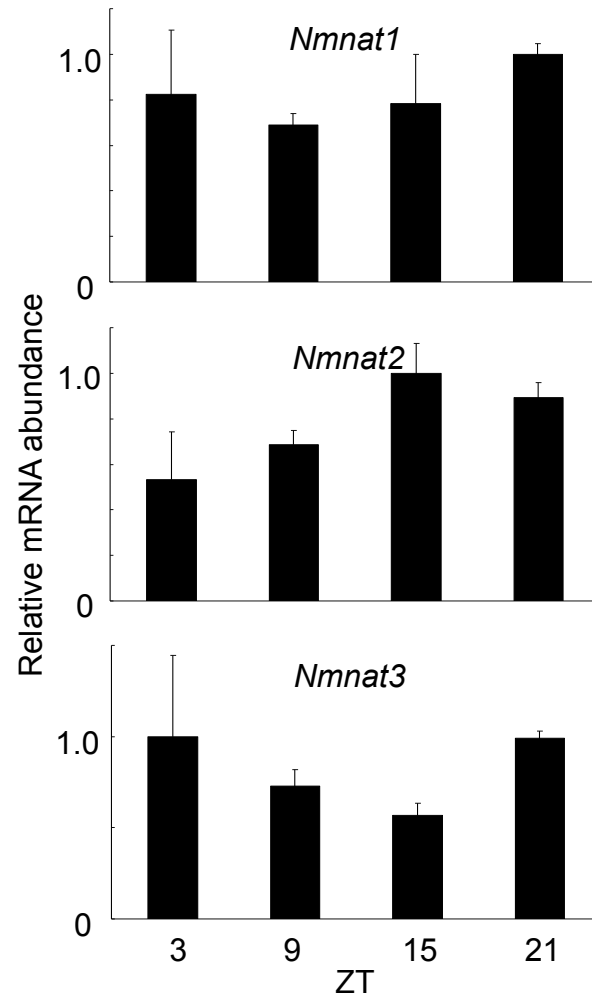
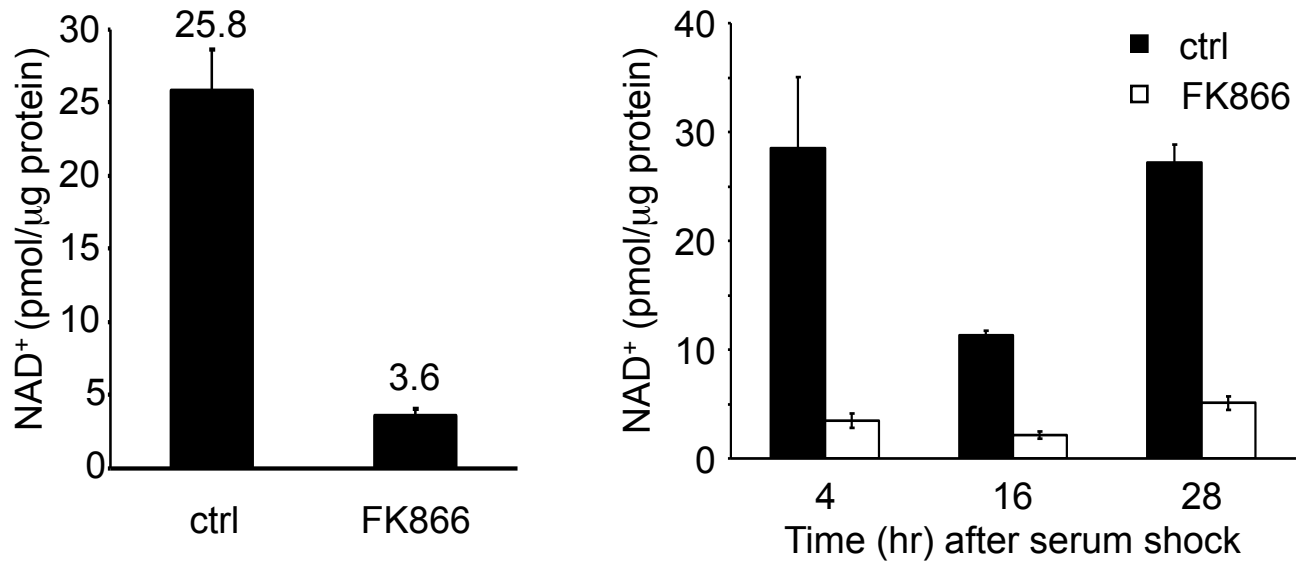


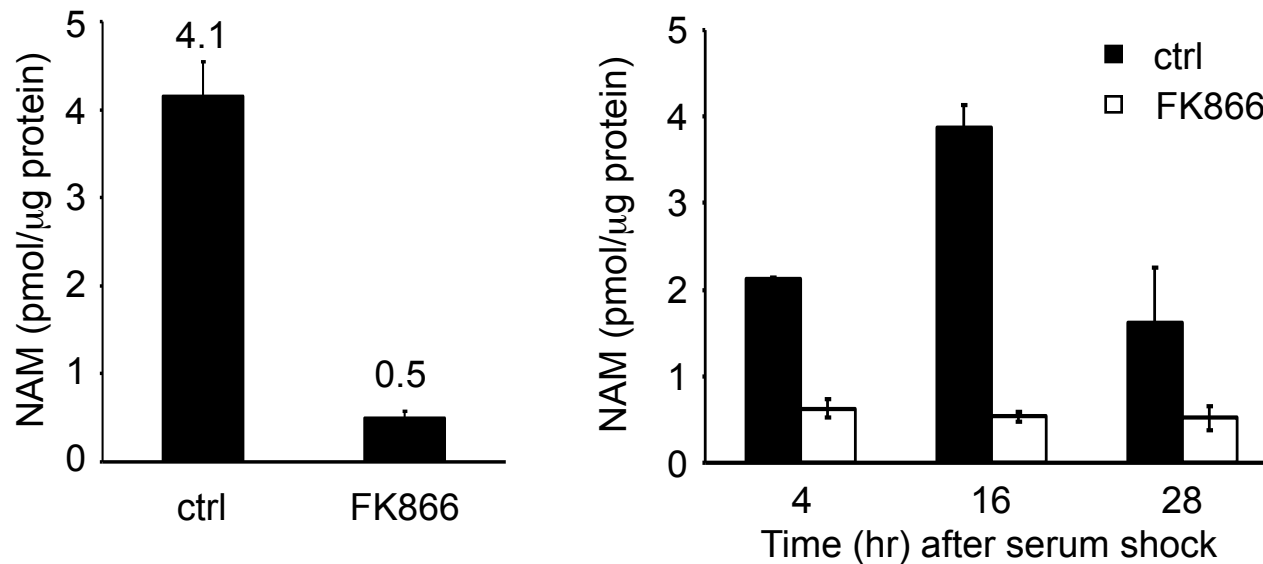
**Figure S1. Cellular NAD<sup>+</sup> in c/c mutant MEFs.** Cellular NAD<sup>+</sup> was extracted from serum-entrained c/c mutant MEFs at indicated time points and analyzed by LC/MS<sup>n</sup>. Three independent experiments were performed and representative is shown. All data are means  $\pm$  SEM of three independent samples.



**Figure S2. *Nmnat1-3* gene expressions in mice liver.** *Nmnat1-3* gene expressions in liver from light-entrained mice were quantified by q-PCR using same sample as shown in Fig.2B. Highest expression time point was set to 1. All data are means  $\pm$  SEM of three independent samples.



**Figure S3. Cellular NAD<sup>+</sup> in FK866 treated MEFs.** Cellular NAD<sup>+</sup> was extracted from serum-entrained FK866 or EtOH (solvent; ctrl) pretreated MEFs at indicated time points and analyzed by LC/MS<sup>n</sup>. Two independent experiments were performed and representative results are shown in the right panel. Data presented are means  $\pm$  SEM of three independent samples. Left panel is the average of all experiments (36 independent samples).



**Figure S4. Cellular NAM in FK866 treated MEFs.** Cellular NAM was extracted from serum-entrained FK866 or EtOH (solvent; ctrl) pretreated MEFs at indicated time points and analyzed by LC/MS<sup>n</sup>. Two independent experiments were performed and representative results are shown in the right panel. Data presented are means  $\pm$  SEM of three independent samples. Left panel is the average of all experiments (36 independent samples).