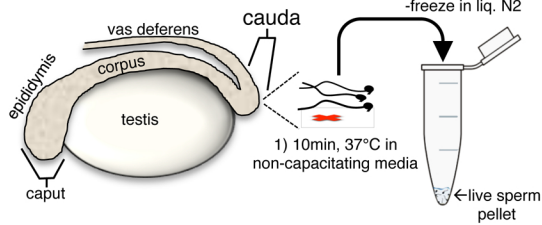
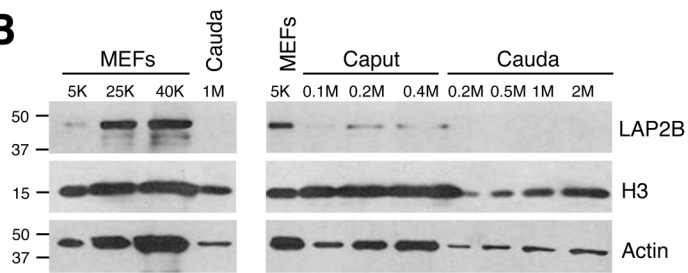
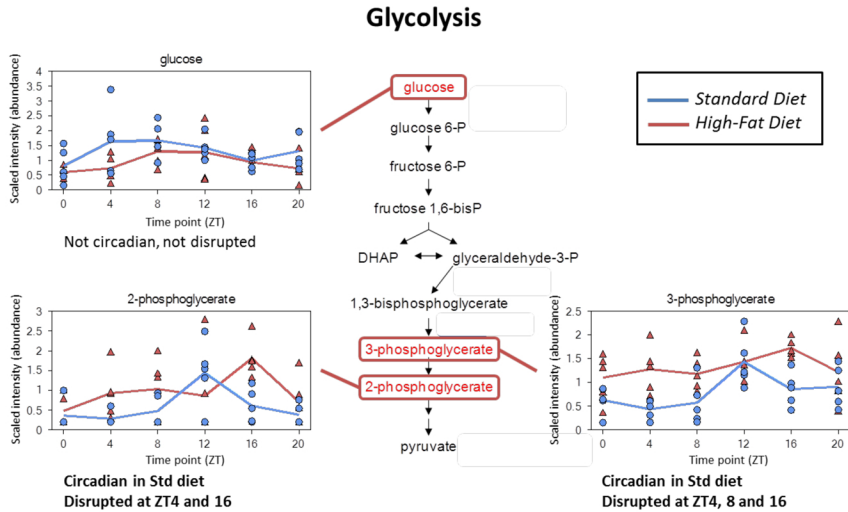


A**B****C****D**

Lysolipid	ZT0	ZT4	ZT8	ZT12	ZT16	ZT20
1-palmitoylglycerophosphoethanolamine	1.54	0.99	1.32	0.91	1.03	1.32
2-palmitoylglycerophosphoethanolamine	1	1.02	1.06	0.56	0.9	0.41
1-stearoylglycerophosphoethanolamine	0.86	1.09	1.04	0.64	0.93	0.62
1-oleoylglycerophosphoethanolamine	1.14	1.03	1.21	0.74	0.97	1
2-oleoylglycerophosphoethanolamine	0.63	1.01	1.2	0.45	0.71	0.58
1-arachidonoylglycerophosphoethanolamine	1.13	0.85	1.01	0.91	1	1.18
2-arachidonoylglycerophosphoethanolamine	1.21	0.94	1.21	0.91	1.14	0.92
2-docosapentaenoylglycerophosphoethanolamine	0.7	1.3	1.01	0.57	0.96	0.56
2-docosahexaenoylglycerophosphoethanolamine	0.68	1.12	0.94	0.59	1.02	0.61
1-myristoylglycerophosphocholine	0.7	0.87	1.31	0.6	0.71	0.47
1-palmitoylglycerophosphocholine	0.78	1.13	1.22	0.54	0.87	0.53
2-palmitoylglycerophosphocholine	0.61	1.51	1.33	0.65	0.91	0.53
1-palmitoleoylglycerophosphocholine	0.66	0.86	0.62	0.64	0.84	0.74
1-stearoylglycerophosphocholine	0.81	1.11	1.06	0.58	0.89	0.6
2-stearoylglycerophosphocholine	0.71	1.2	1.01	0.88	0.91	0.52
1-oleoylglycerophosphocholine	0.64	1.12	1.17	0.57	0.85	0.57
2-oleoylglycerophosphocholine	0.59	1.23	1.1	0.52	0.81	0.63
1-linoleoylglycerophosphocholine	0.7	0.88	1.06	0.68	0.96	0.65
2-arachidonoylglycerophosphocholine	0.54	1.09	1.15	0.55	1.02	0.62
1-docosapentaenoylglycerophosphocholine	0.66	1.2	0.6	1.01	0.9	0.81
2-docosapentaenoylglycerophosphocholine	0.6	1.28	1.03	0.6	0.92	0.59
2-docosahexaenoylglycerophosphocholine	0.63	1.19	0.99	0.63	0.99	0.54
1-stearoylglycerophosphoinositol	1.27	1.07	1.59	0.88	1.04	0.88
1-palmitoylplasmenylethanolamine	1.3	1.13	1.14	0.77	0.94	1