

Supplementary Figure 1. Box-and-whisker plots showing protein expression levels in primary tumors from breast cancer patients with and without recurrence in all breast cancer cases and in different tumor subtypes . No Recur, no recurrence; Recur, recurrence. Blue dots: cases without recurrence; Yellow dots: cases with recurrence. The expression level of proteins were estimated using the total score (Intensity X Percentage) method. The pCrk/CrkL expression level is the combined levels from cytoplasm and nucleus. Results using the other two scoring methods (Intensity, Allred) are similar and not shown. P-value was obtained from Wilcoxon signed rank test. A, TWIST1; B, SNAL1; C, PAWR; D, WNT; E, pCrk/CrkL combined; F, pCrk/CrkL subcellular fractions.

Article Title: Potential Protein Markers for Breast Cancer Recurrence: A Retrospective Cohort Study

Journal Name: Cancer Causes & Control

Author Names: Chunyan He, Rina Plattner, Vivek Rangnekar, Binhua Zhou, Chunming Liu, Rachel L. Stewart, Bin Huang, Chi Wang, Thomas C. Tucker

Affiliation and E-mail Addresses for Corresponding Authors:

Dr. Chunyan He

chunyan.he@uky.edu

Markey Cancer Center, University of Kentucky, Lexington, KY; Department of Internal Medicine, Division of Medical Oncology, College of Medicine, University of Kentucky, Lexington, KY

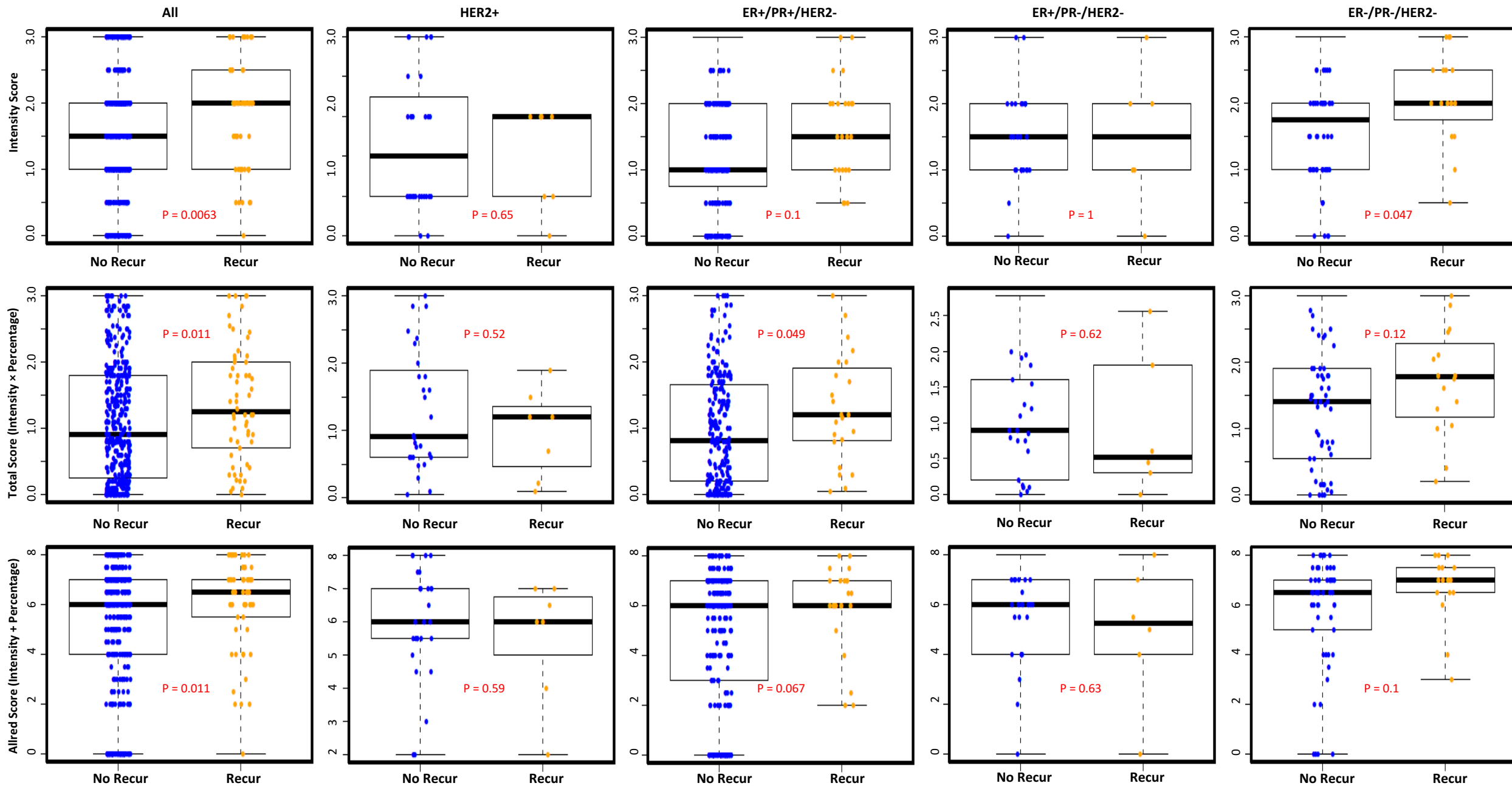
Dr. Thomas Tucker

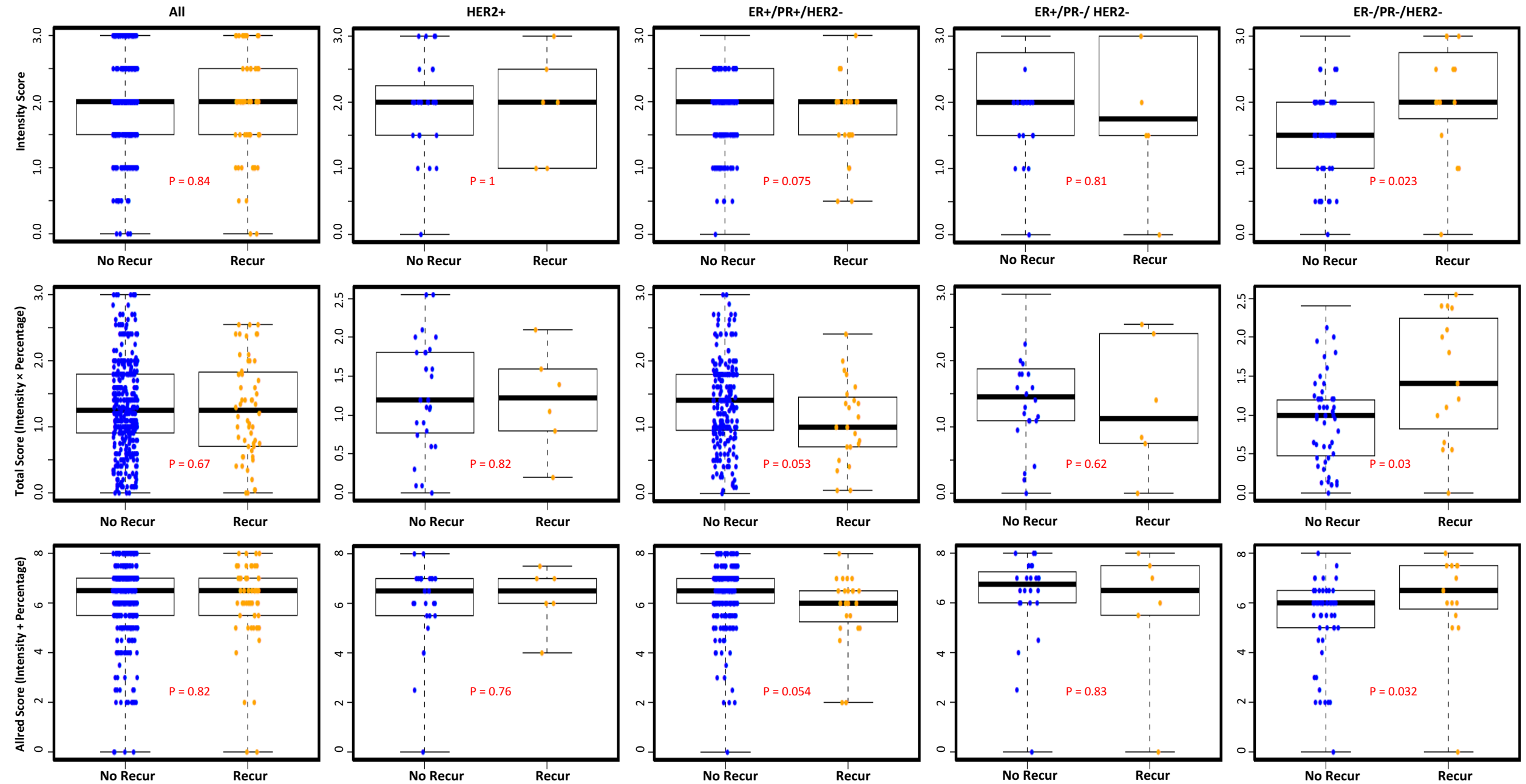
tct@kcr.uky.edu

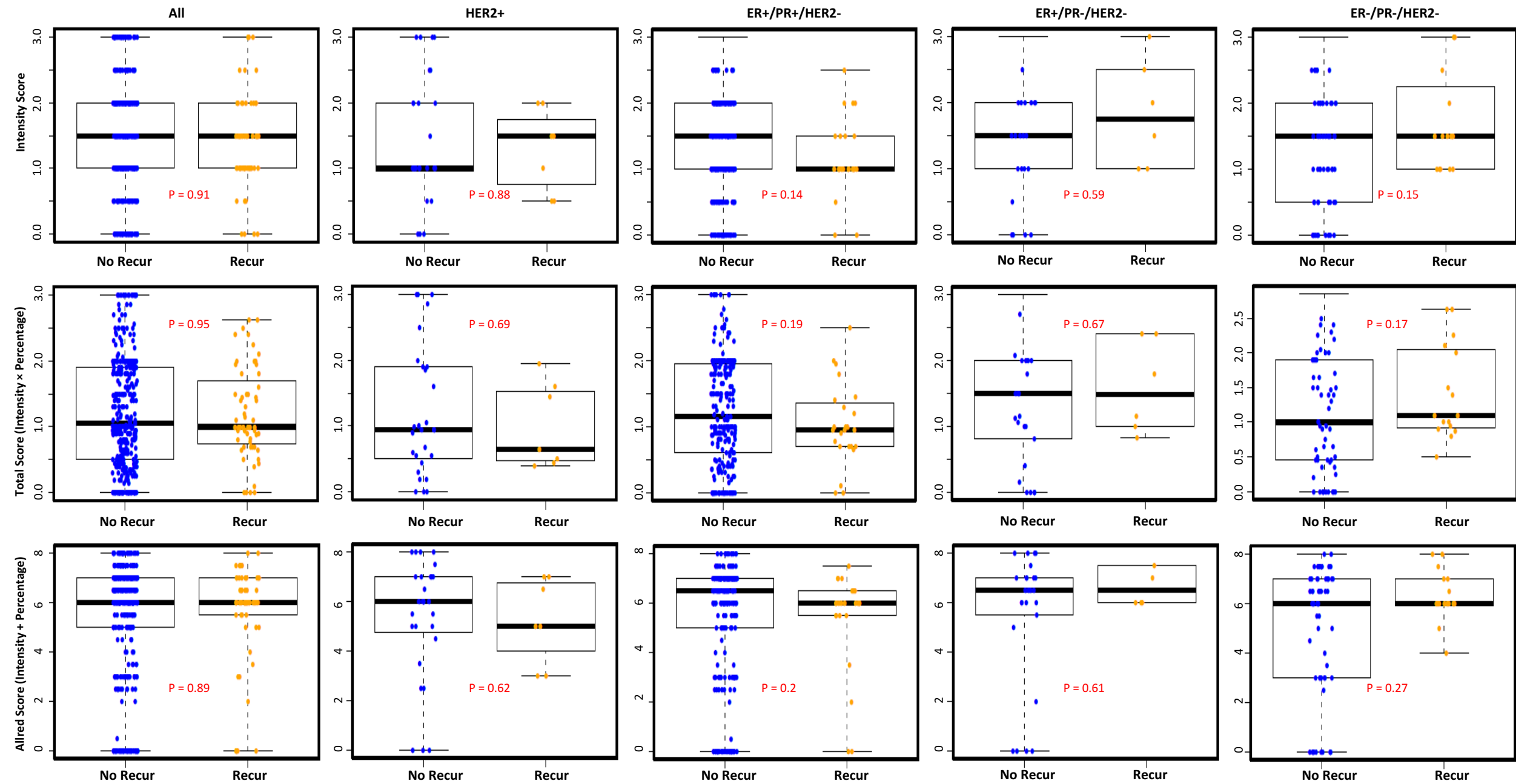
Department of Epidemiology, College of Public Health, University of Kentucky, Lexington, KY; Markey Cancer Center, University of Kentucky, Lexington, KY

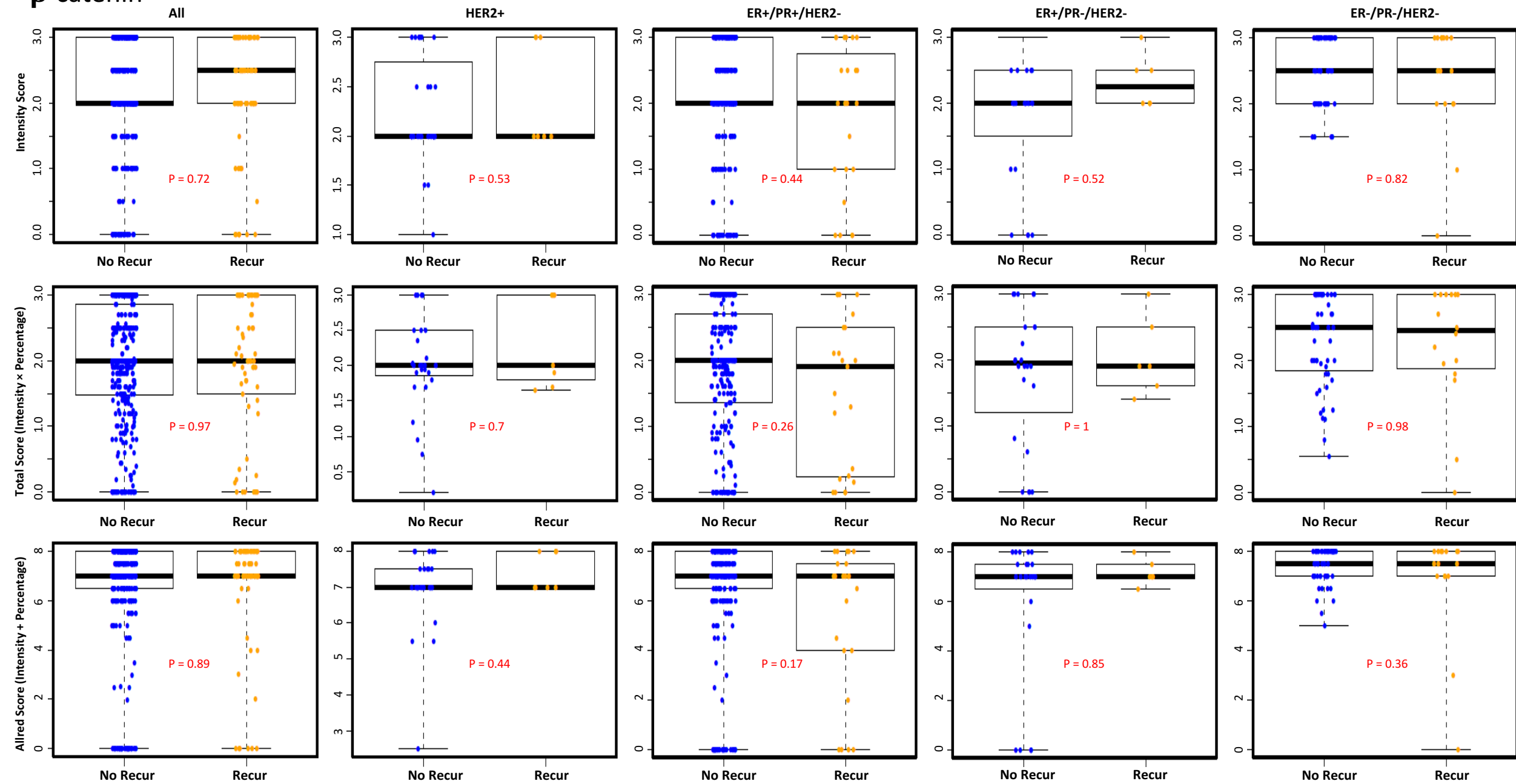
a

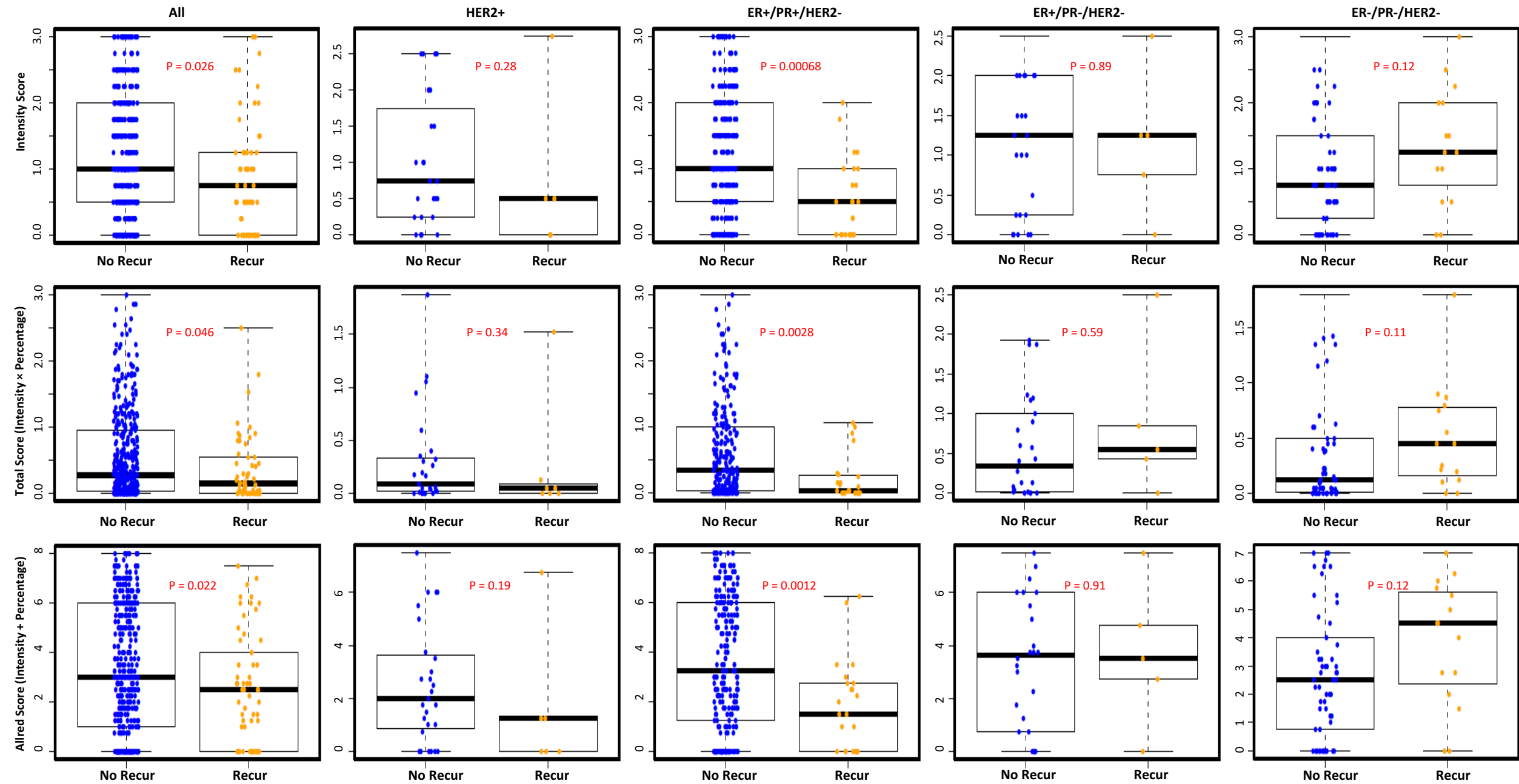
TWIST1



b**SNAI1**

C**PAWR**

a **β -catenin**

e**pCrk/CrkL (COMBINED)**

f**pCrk/CrkL (Nucleus/Cytoplasm)**