

Supplementary Information

Ligustilide, a major bioactive component of *Angelica sinensis*, promotes bone formation via the GPR30/EGFR pathway

Yang F^{1,3}, Lin ZW^{1,3}, Huang TY^{1,3}, Chen TT^{1,3}, Cui J^{1,3}, Li MY^{1,3}, Hua YQ^{1,2,3*}

¹ Jiangsu Key Laboratory for Pharmacology and Safety Evaluation of Chinese Materia Medica, School of Pharmacy, Nanjing University of Chinese Medicine, Nanjing 210023, China

² Jiangsu Collaborative Innovation Center of Chinese Medicinal Resources Industrialization, Nanjing University of Chinese Medicine, Nanjing 210023, China

³ School of Pharmacy, Nanjing University of Chinese Medicine, Nanjing 210023, Jiangsu Province, China.

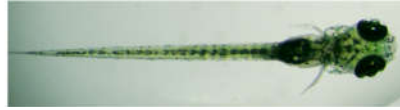
*Corresponding author at: School of Pharmacy, Nanjing University of Chinese Medicine, 138 Xianlin Avenue, Qixia District, Nanjing 210023, Jiangsu Province, China.

Tel.: +86 25 85811531

E-mail address: hua_yq@njucm.edu.cn.

Fig S1.

a



b

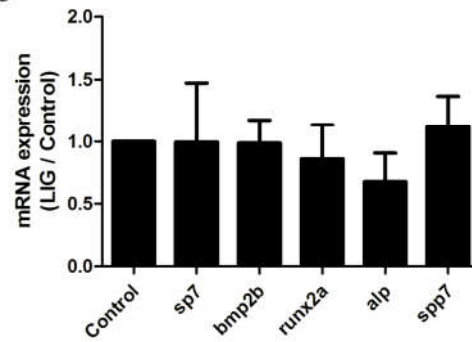
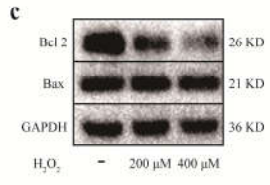


Fig S1. Effects of ligustilide on bone formation in zebrafish. (a) Bright field image of zebrafish at 9 dpf. (b) The mRNA expression of spp1, alp, runx2a, sp7, and bmp2b measured by quantitative RT-PCR in zebrafish at 9 dpf. Error bars indicate S.E.M. (n = 3).

Fig 3.



Original films

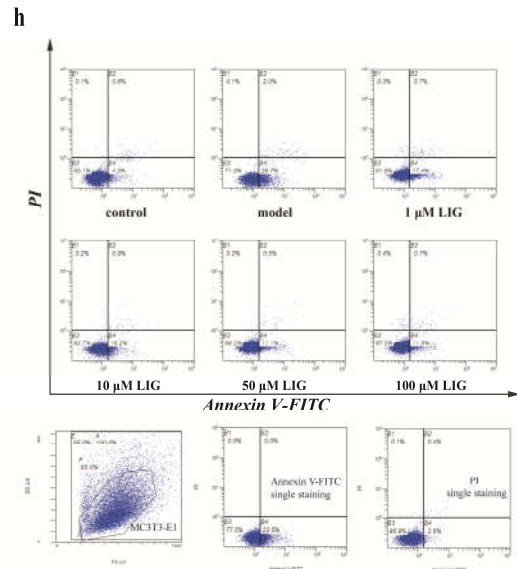
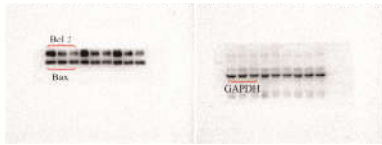
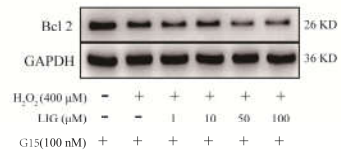
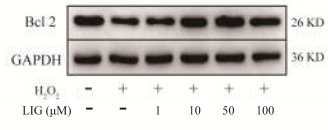


Fig 4.

b



Original films

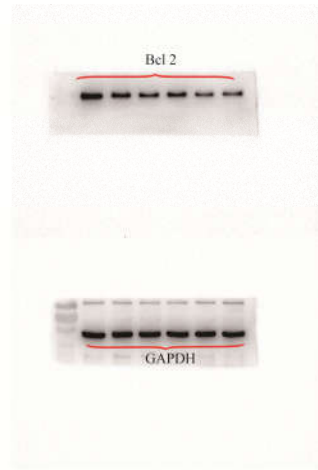
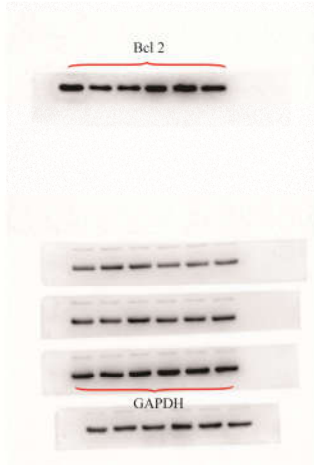


Fig 5.

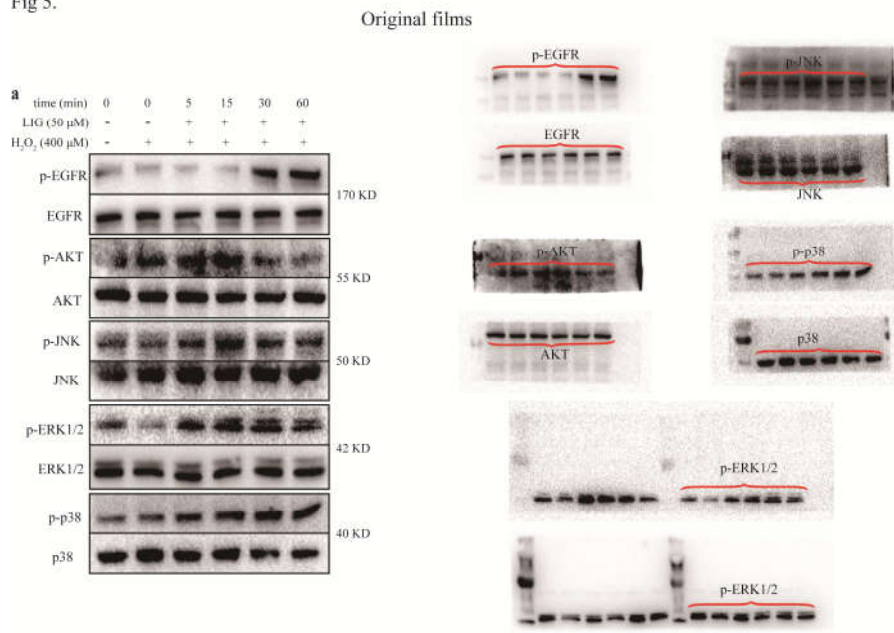


Fig 5.

