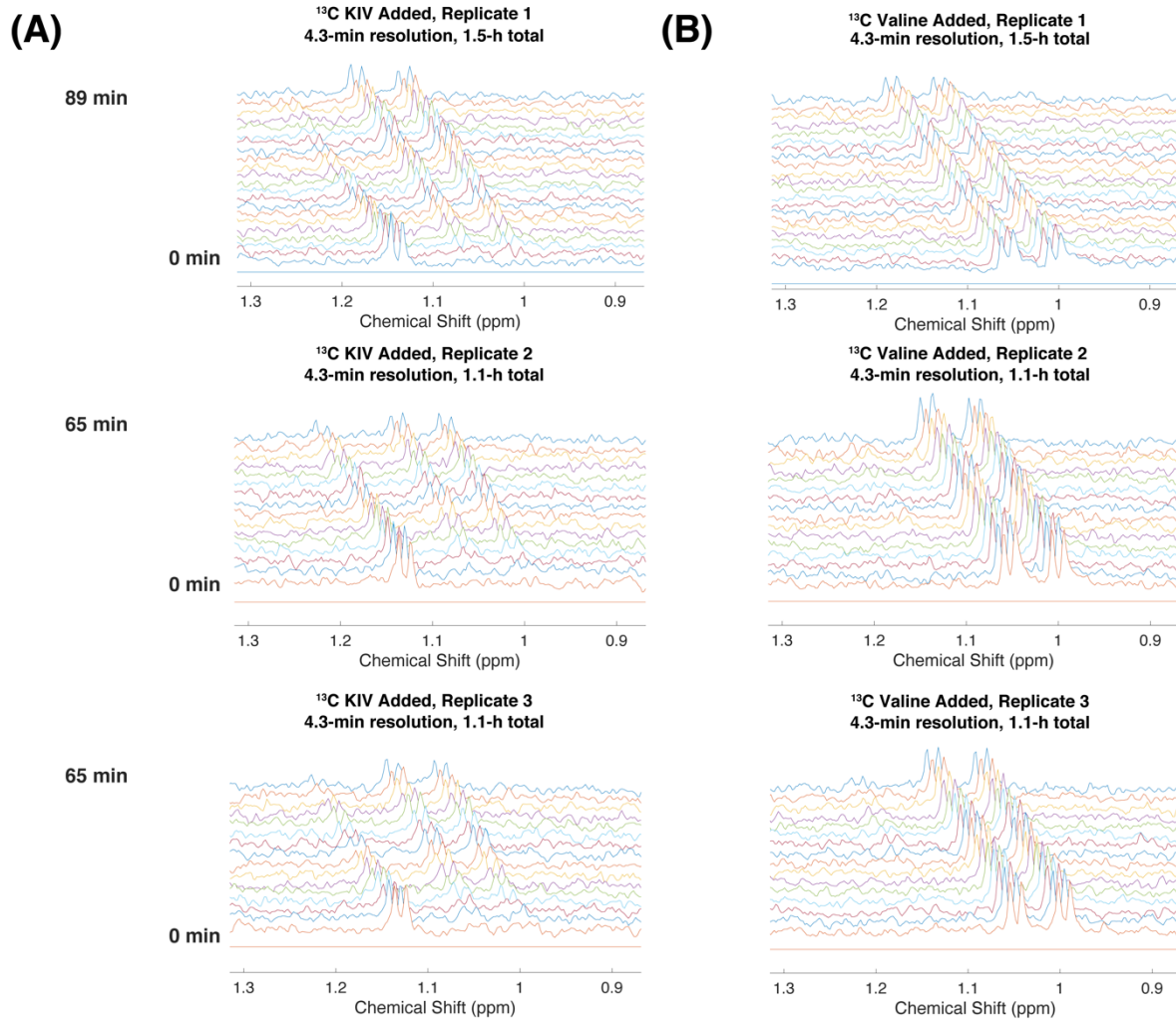


Supplementary Material



Supplementary Figure 1. Targeted isotopic CIVM-NMR measurements of metabolic flux in human myeloid leukemia cells are reproducible. (A) 1D ¹³C-edited hsqc experiments were used to observe protons covalently attached to ¹³C derived from uniformly labeled KIV in three independent replicates. ¹³C valine accumulates as KIV is consumed. **(B)** The same experiments were used to observe protons covalently attached to ¹³C derived from uniformly labeled valine in three independent replicates. ¹³C derived from uniformly labeled valine does not accumulate to appreciable levels in KIV.