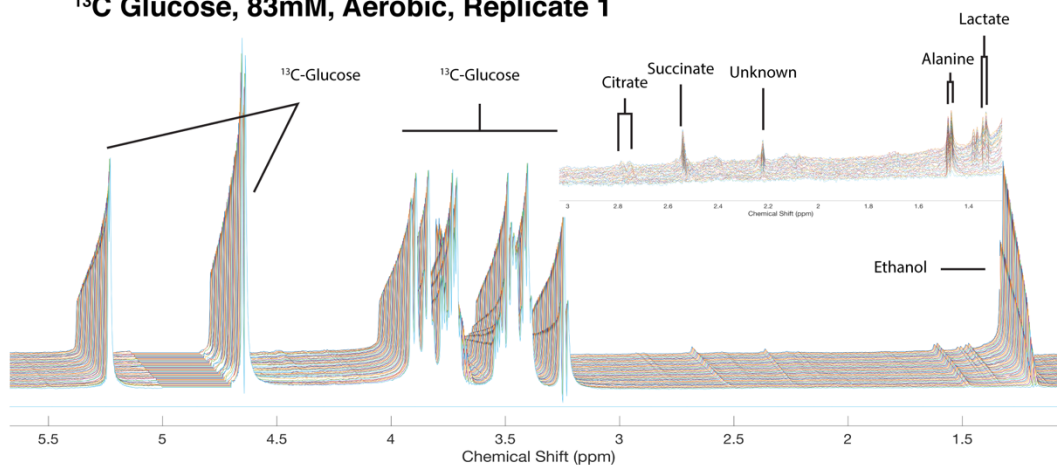
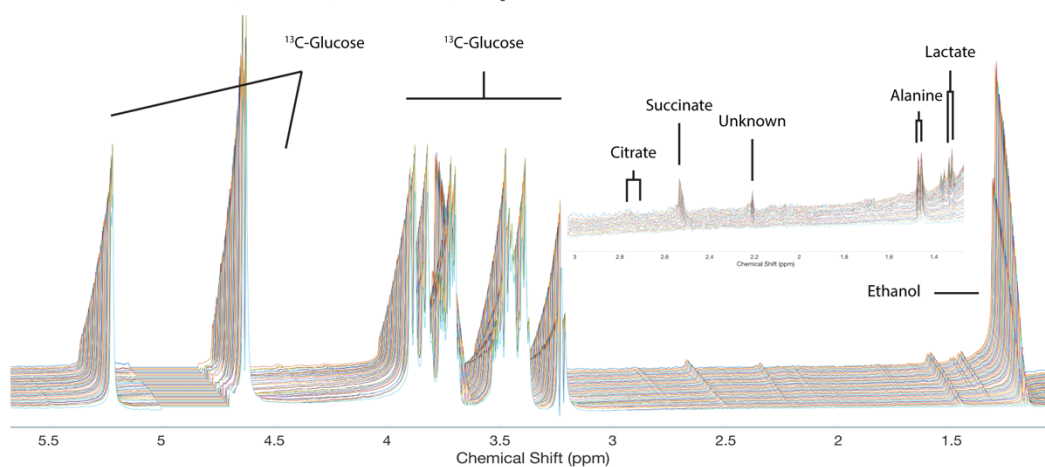


Supplementary Material

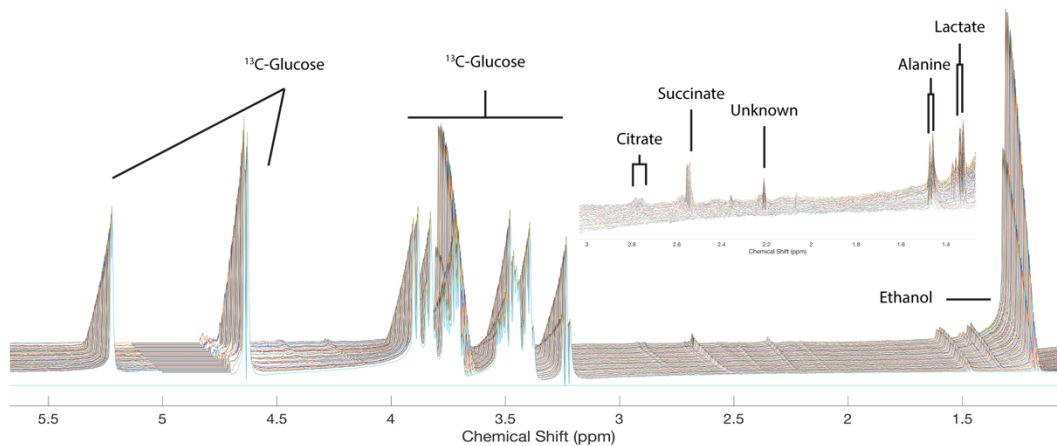
^{13}C Glucose, 83mM, Aerobic, Replicate 1



^{13}C Glucose, 83mM, Aerobic, Replicate 2



^{13}C Glucose, 83mM, Aerobic, Replicate 3



Supplementary Figure 7. Accumulation of ^{13}C -labeled metabolites in three independent replicate aerobic *N. crassa* cultures. hmqc1d NMR experiments were used to monitor the accumulation of ^{13}C -labeled metabolites after addition of uniformly labeled ^{13}C glucose. Glucose was converted to ethanol, alanine, succinate, and lactate, citrate, and some peaks that have yet to be identified.