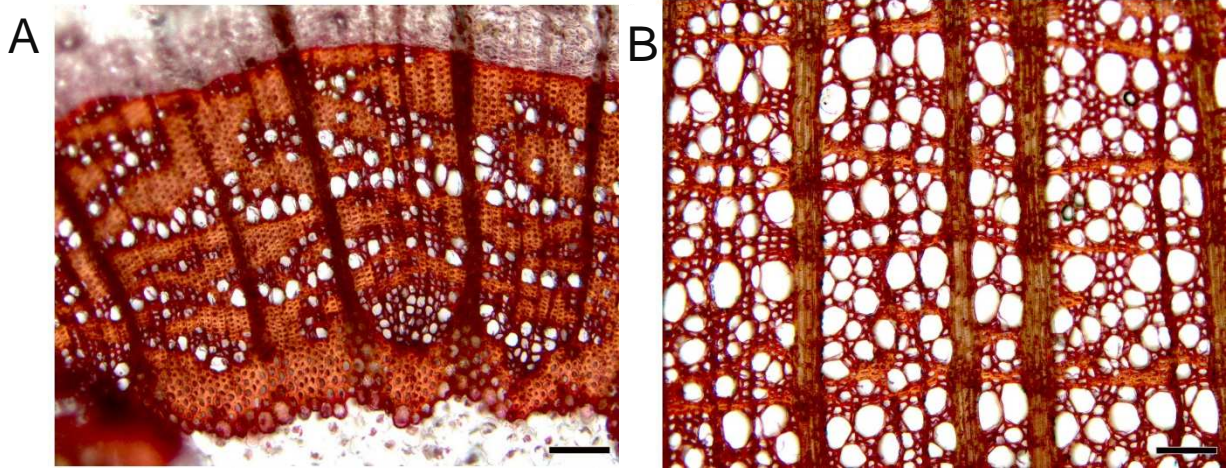


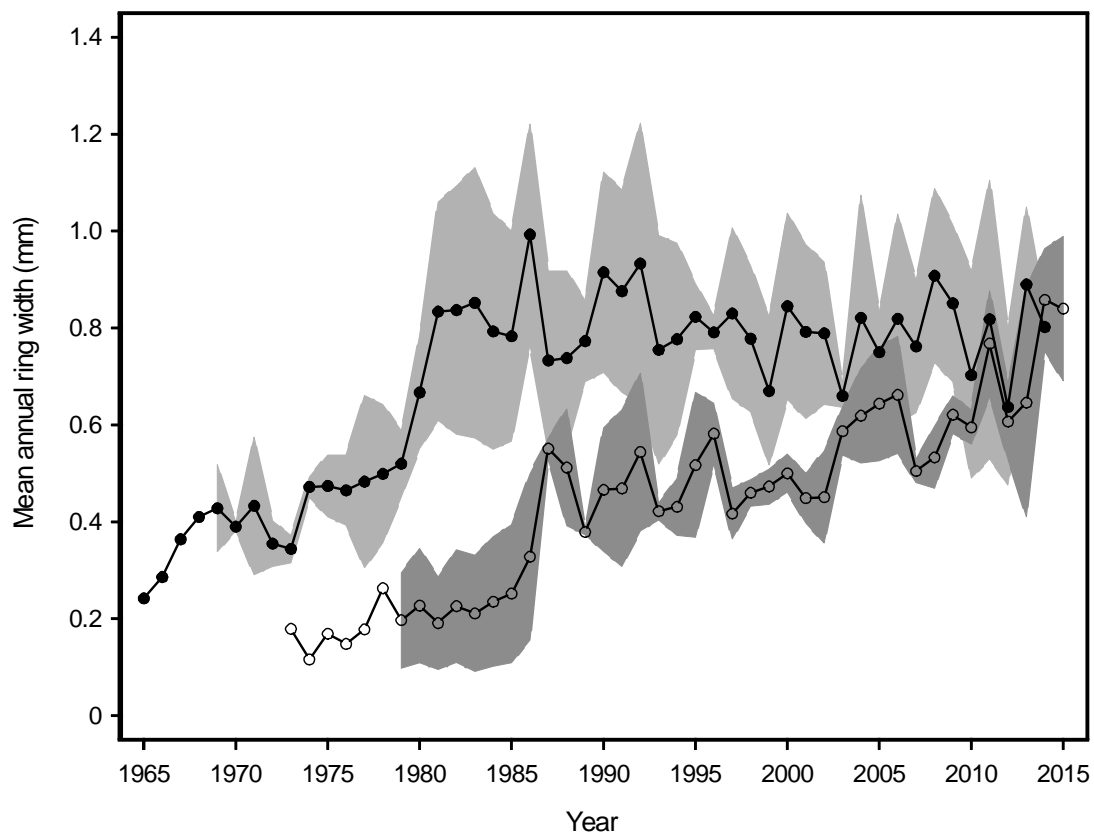
## Supplemental Material

Are hydraulic patterns of lianas different from trees? New insights from *Hedera helix*

Ganthaler A., Marx K., Beikircher B., Mayr S.



**Suppl. Figure 1.** Cross sections of an adult branch (A) and the main stem (B) of *Hedera helix* at 7-8 m height. Staining with Etzold solution (fuchsin/safranin/astrablue), Bars = 100  $\mu\text{m}$ .



**Suppl. Figure 2.** Mean annual ring width (symbols) and SE (grey areas;  $n = 3$ ) of *Hedera helix* main stems at 1.5 m (solid circles, light grey area) and 7.5 m height (open circles, dark grey area) for the years 1965 to 2015. Symbols outside the grey areas show single values of the oldest individual.