

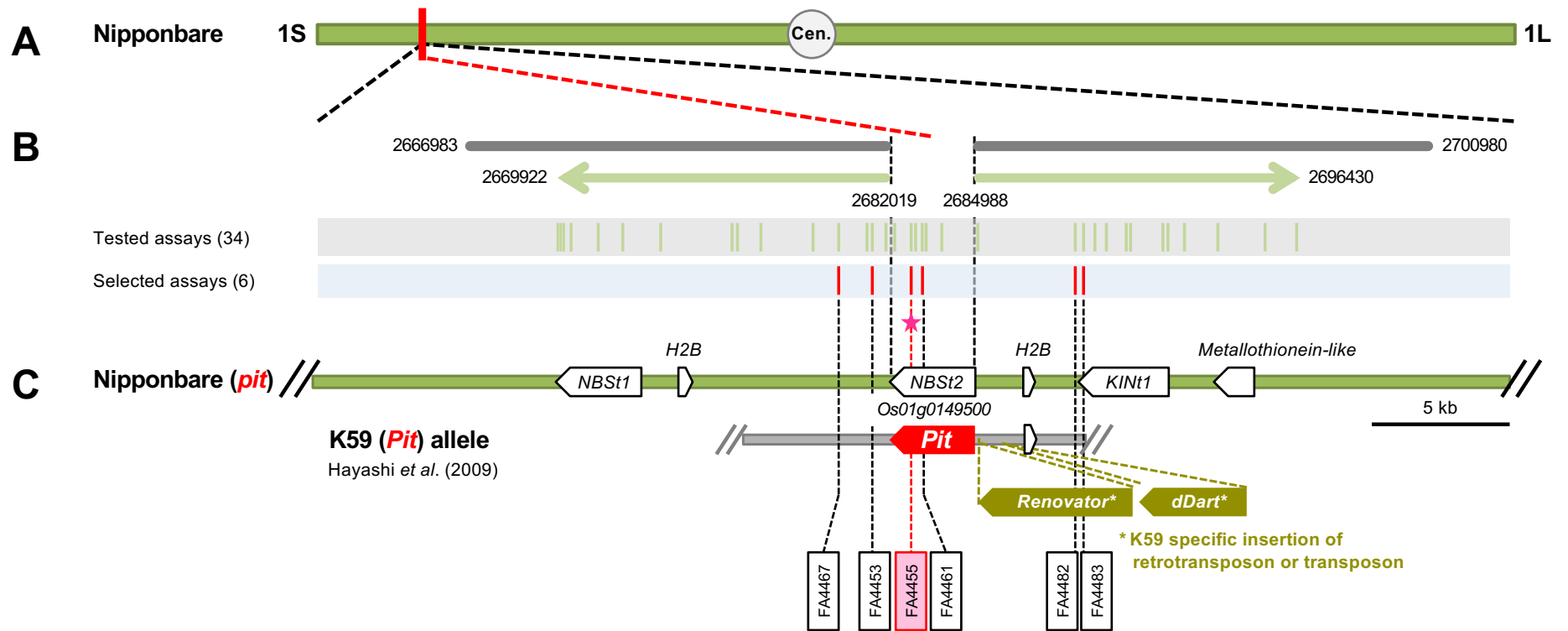
Legends for **Supplemental Figs. 1–10**. SNP genotyping assays for each of the 10 loci.

(A) Positions of the resistance loci on each chromosome in ‘Nipponbare’ IRGSP-1.0. S, short-arm side of the chromosome; L, long-arm side of the chromosome; Cen., centromere. The numbers before the letters L or S represent chromosome number.

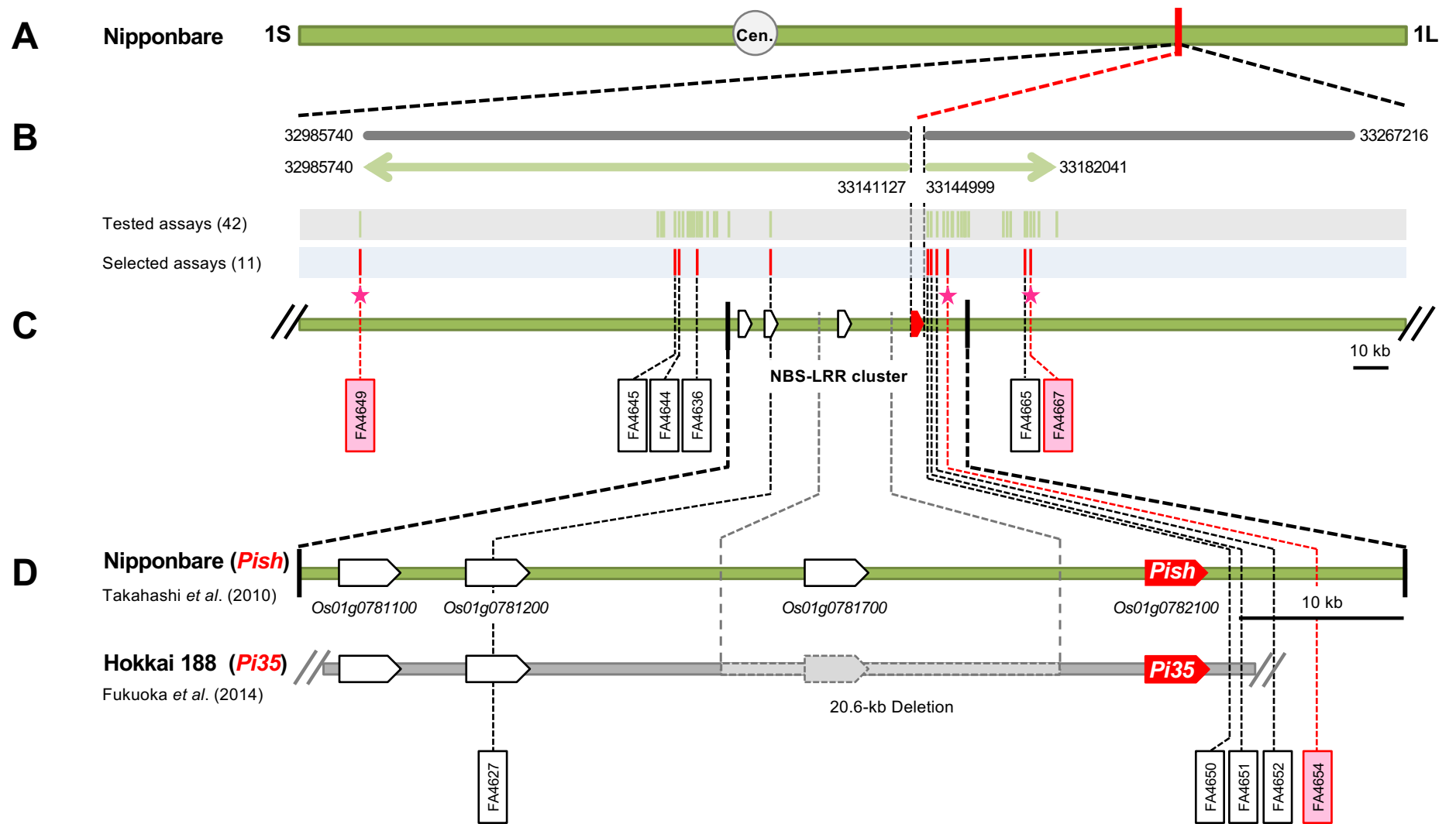
(B) Distribution of SNPs surveyed (horizontal gray bars) and tested (horizontal green arrows) and positions of tested and selected SNP genotyping assays. Positions (bp) on left and right sides of each range refer to the ‘Nipponbare’ reference. The positions of tested and selected assays are indicated by vertical green and red bars, respectively, and their numbers are indicated in parentheses on the left. Pink asterisks indicate “core set” assays that are required to distinguish a certain resistance haplotype from susceptibility haplotype (see Supplemental Table 4 for details).

(C) Physical maps showing positions of the genes that share similarities with genes encoding proteins with nucleotide-binding site (NBS) or leucine-rich repeat (LRR) domains or have been reported previously to be disease resistance-associated genes in ‘Nipponbare’ and donor varieties of resistance alleles. Cloned resistance genes are indicated by red boxes. The names of SNP genotyping assays in BRA1 are indicated below the maps; those selected in the ‘core set’ are highlighted in red.

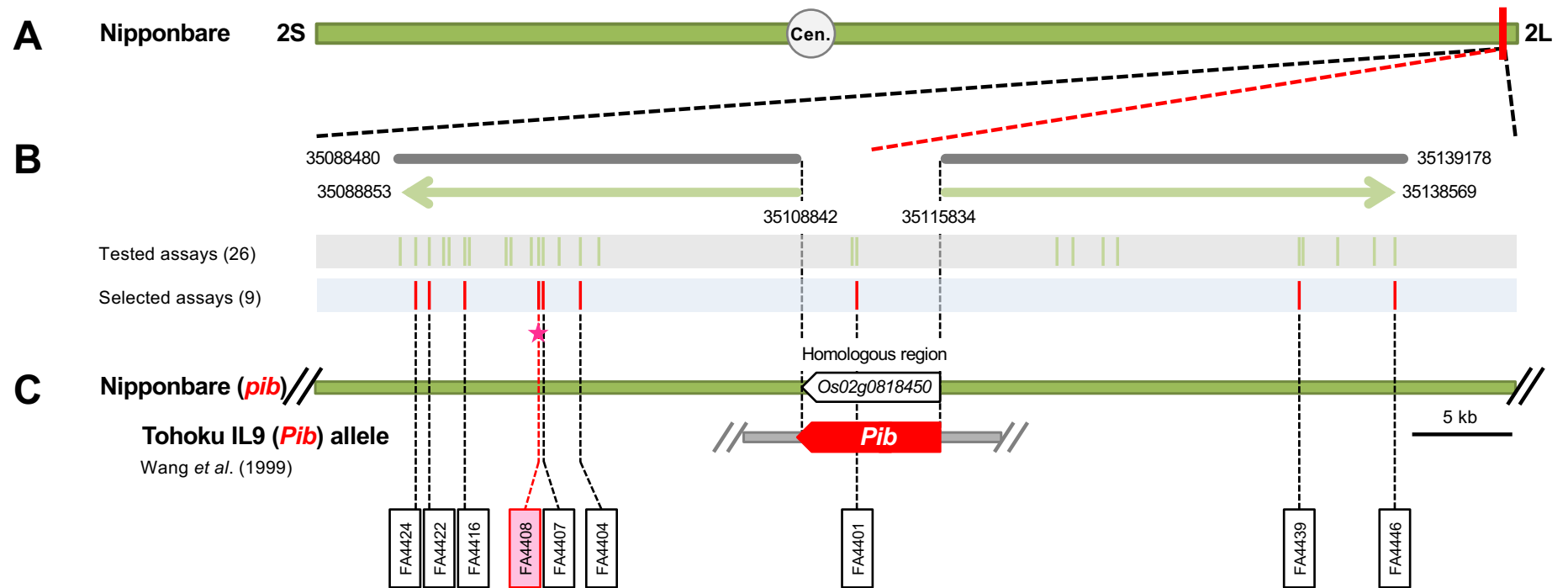
(D) Enlarged views of physical maps showing the region containing the NBS-LRR cluster at the *Pish* locus (Supplemental Fig. 2) and the region harboring two resistance genes in the K-type genome at the *Pik* locus (Supplemental Fig. 8).



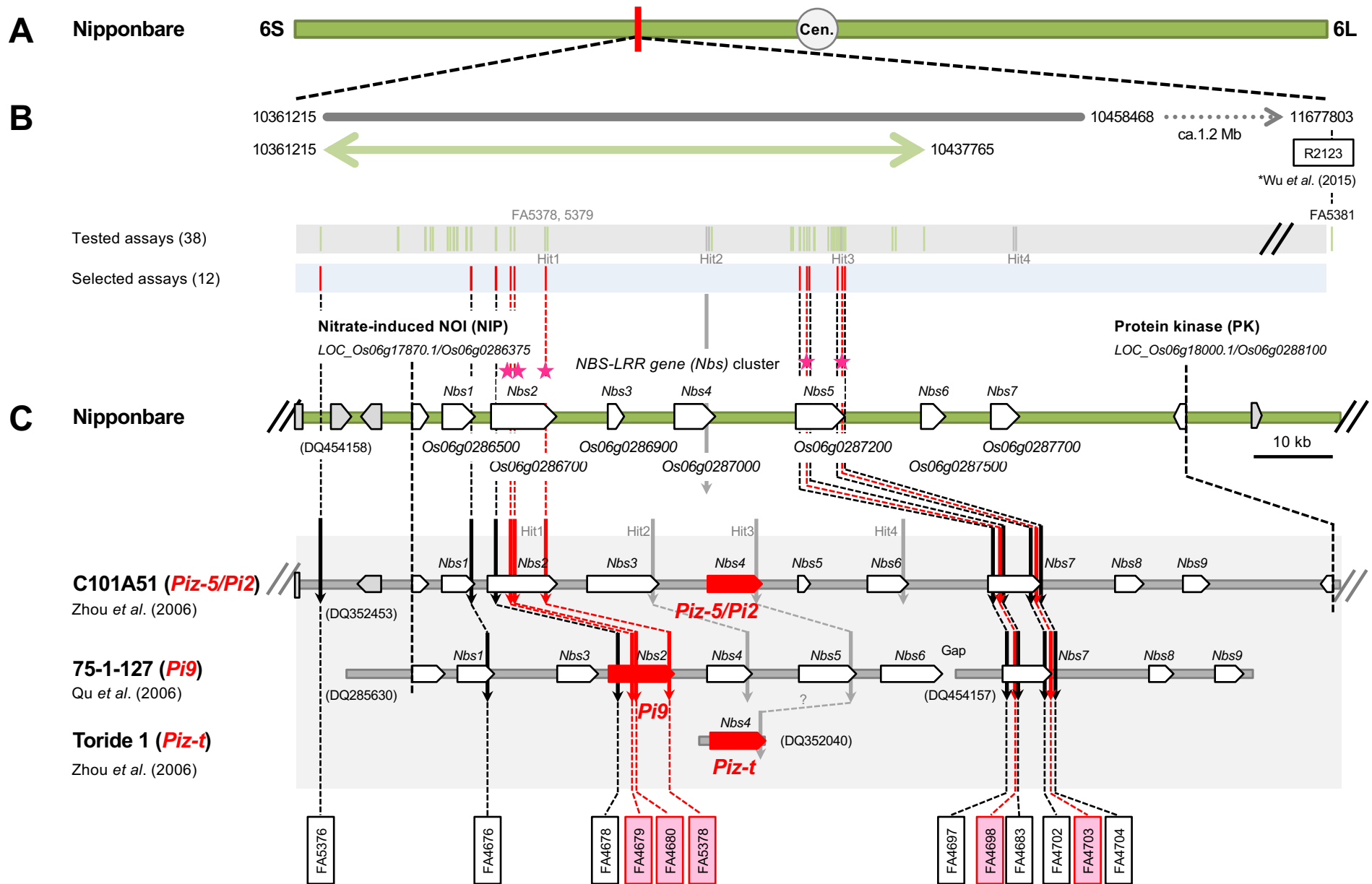
Supplemental Fig. 1. SNP genotyping assays for *Pit* locus



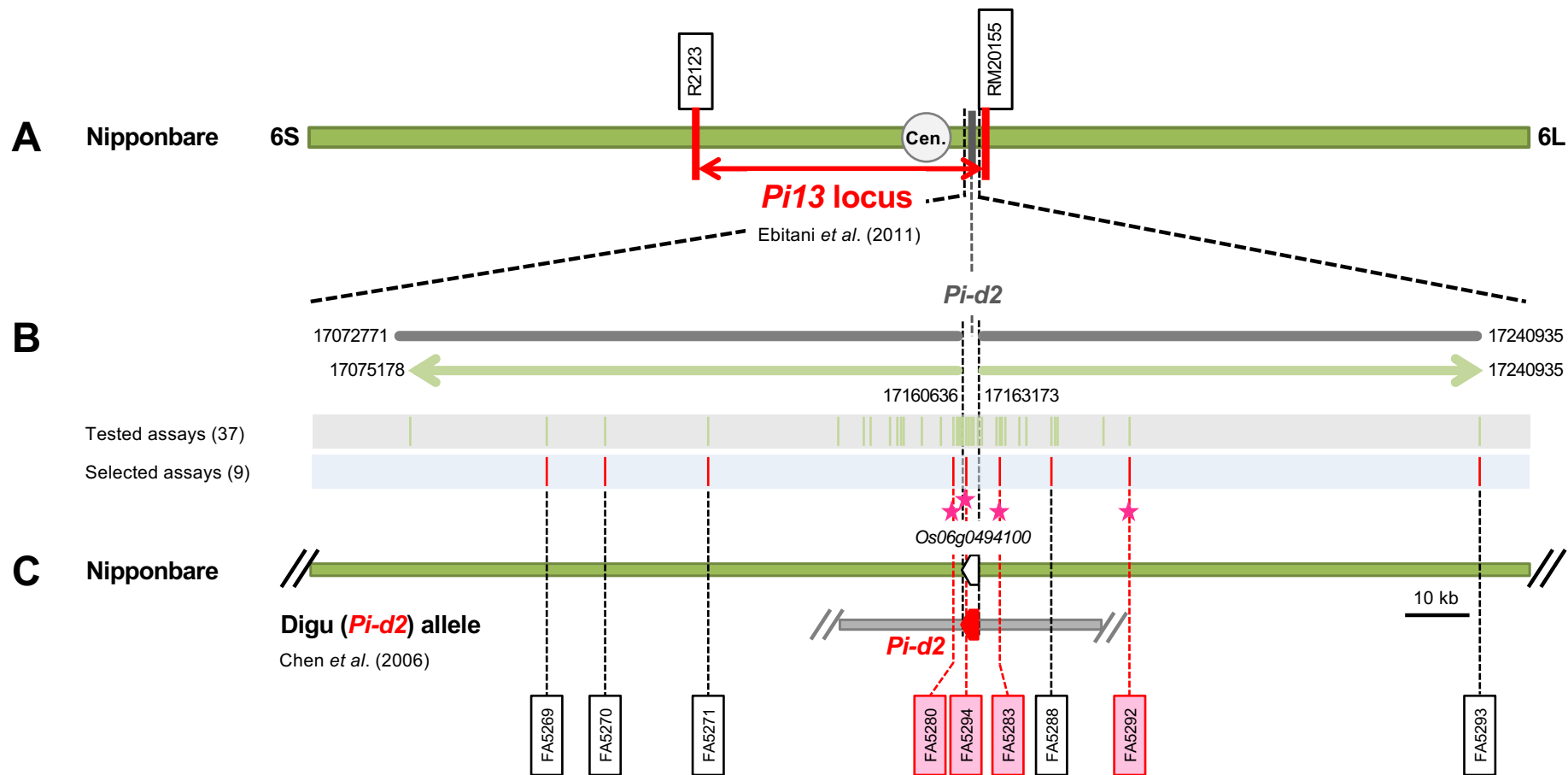
Supplemental Fig. 2. SNP genotyping assays for *Pish* locus



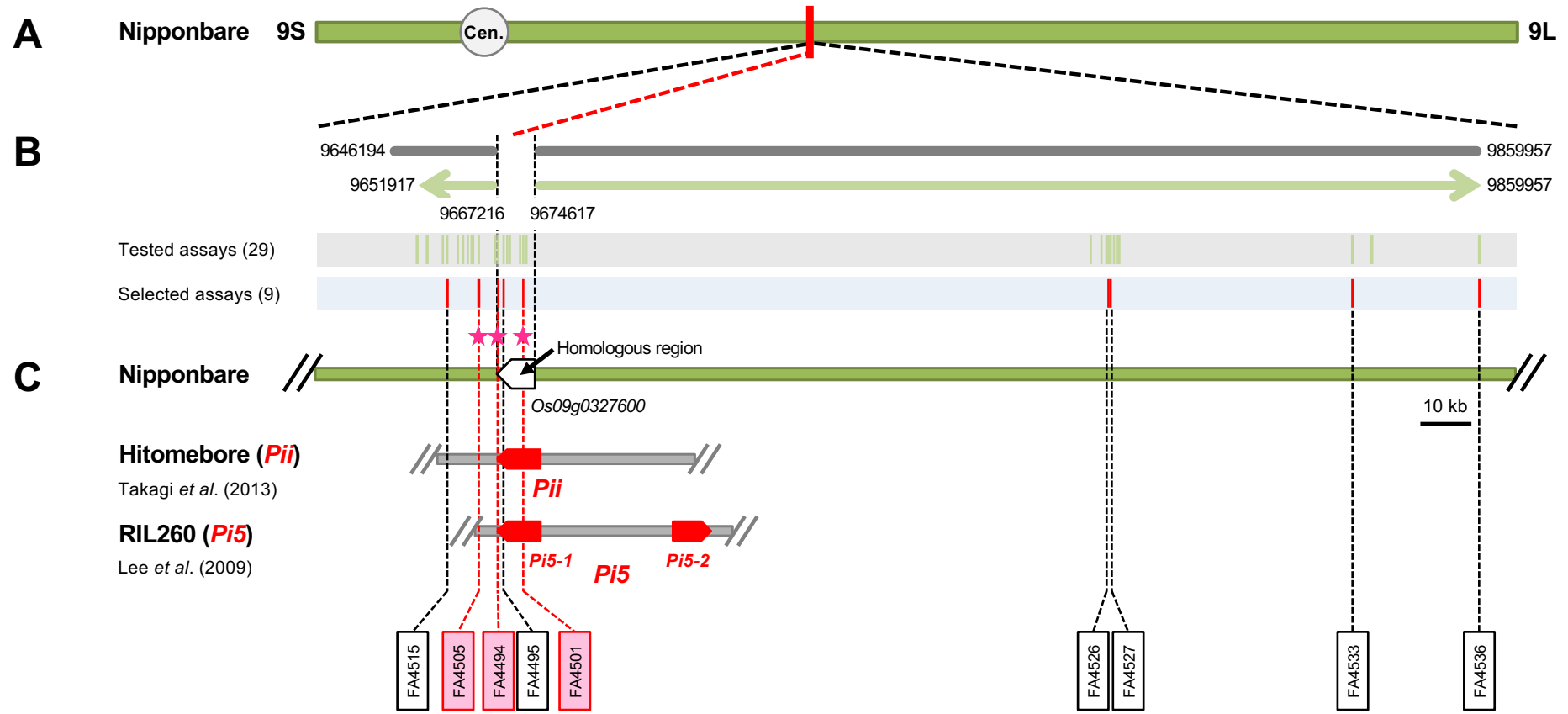
Supplemental Fig. 3. SNP genotyping assays for *Pib* locus



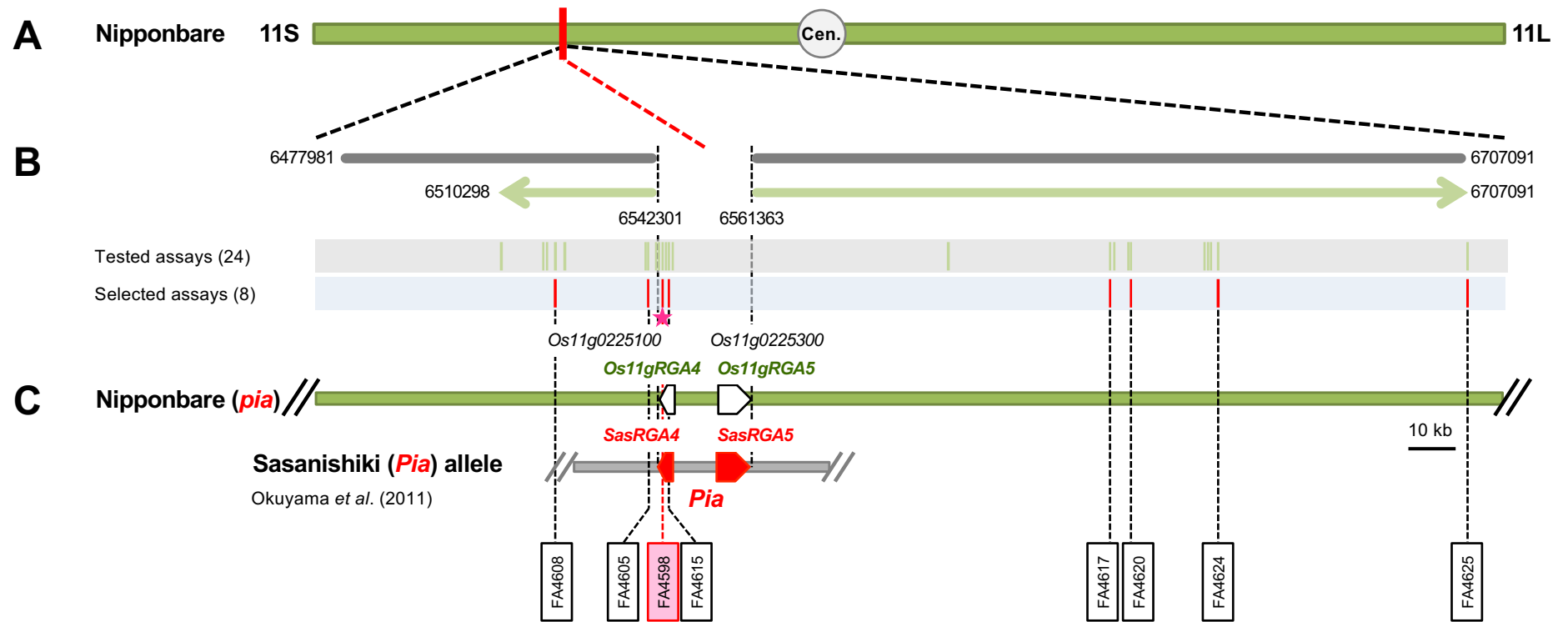
Supplemental Fig. 4. SNP genotyping assays for *Piz* locus



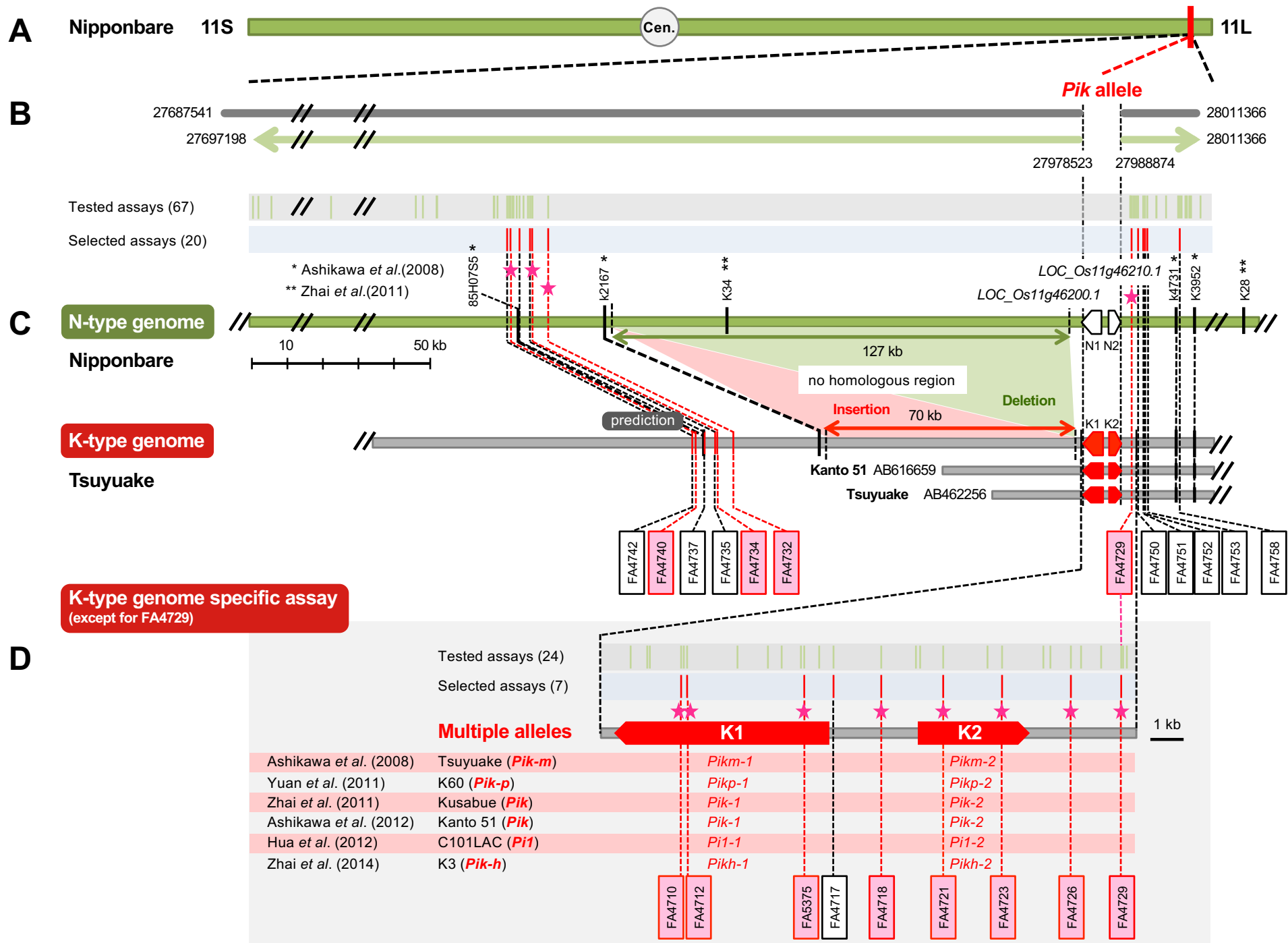
Supplemental Fig. 5. SNP genotyping assays for *Pi13* locus



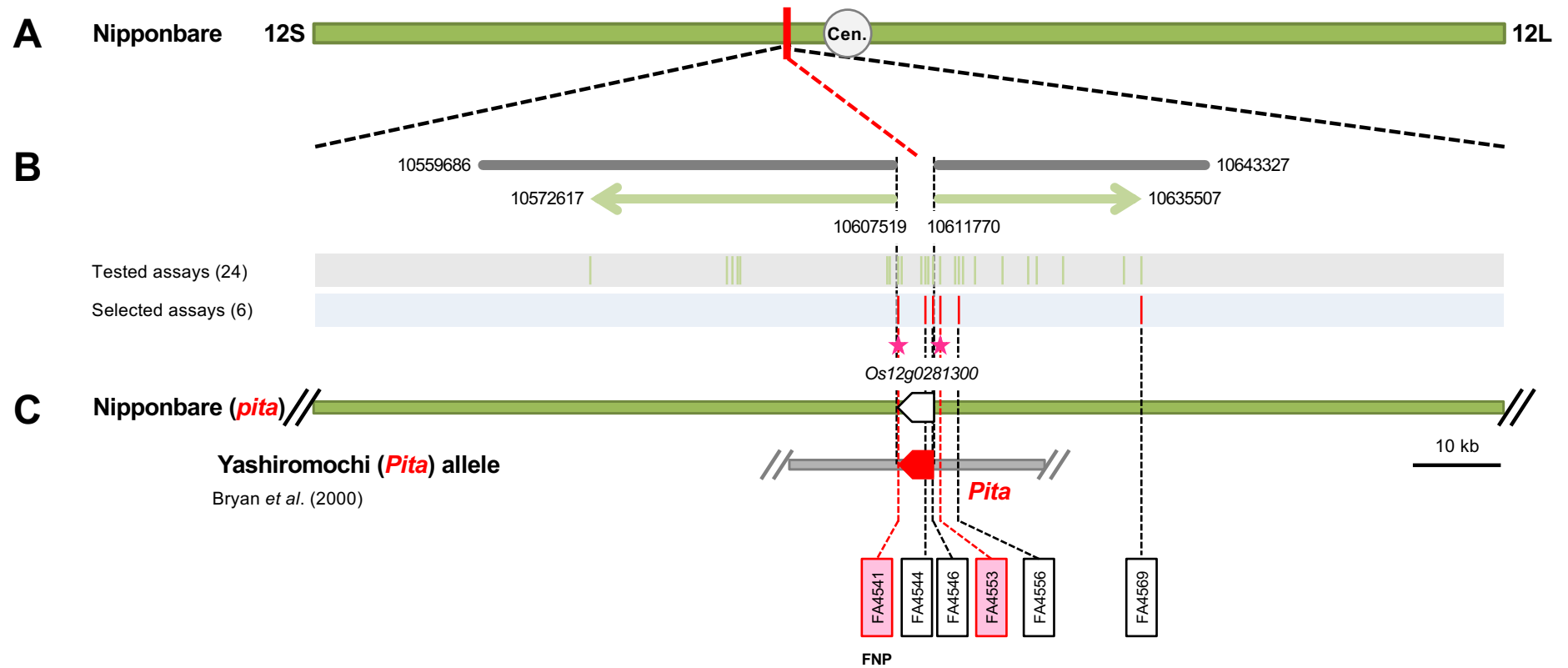
Supplemental Fig. 6. SNP genotyping assays for *Pii* locus



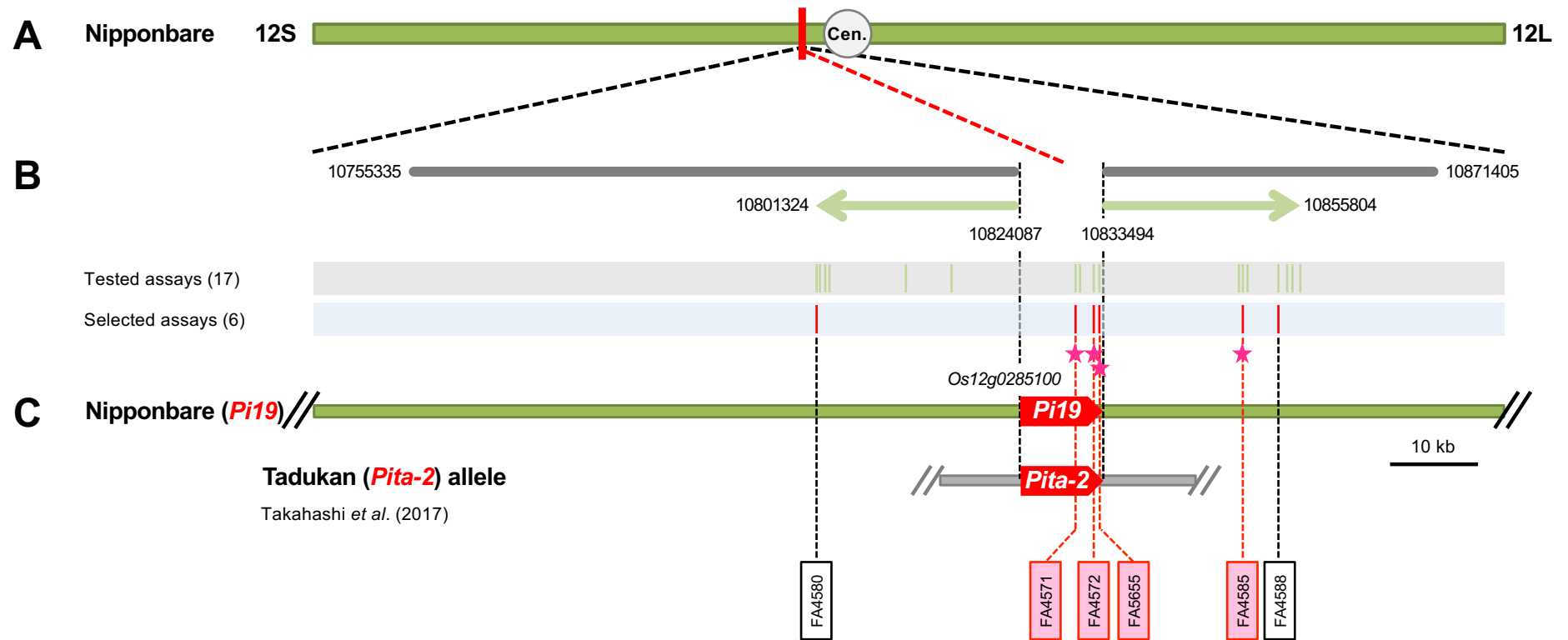
Supplemental Fig. 7. SNP genotyping assays for *Pia* locus



Supplemental Fig. 8. SNP genotyping assays for *Pik* locus



Supplemental Fig. 9. SNP genotyping assays for *Pita* locus



Supplemental Fig. 10. SNP genotyping assays for *Pita-2* locus

Legends for **Supplemental Fig. 11**. InDel marker set for each of the 10 loci.

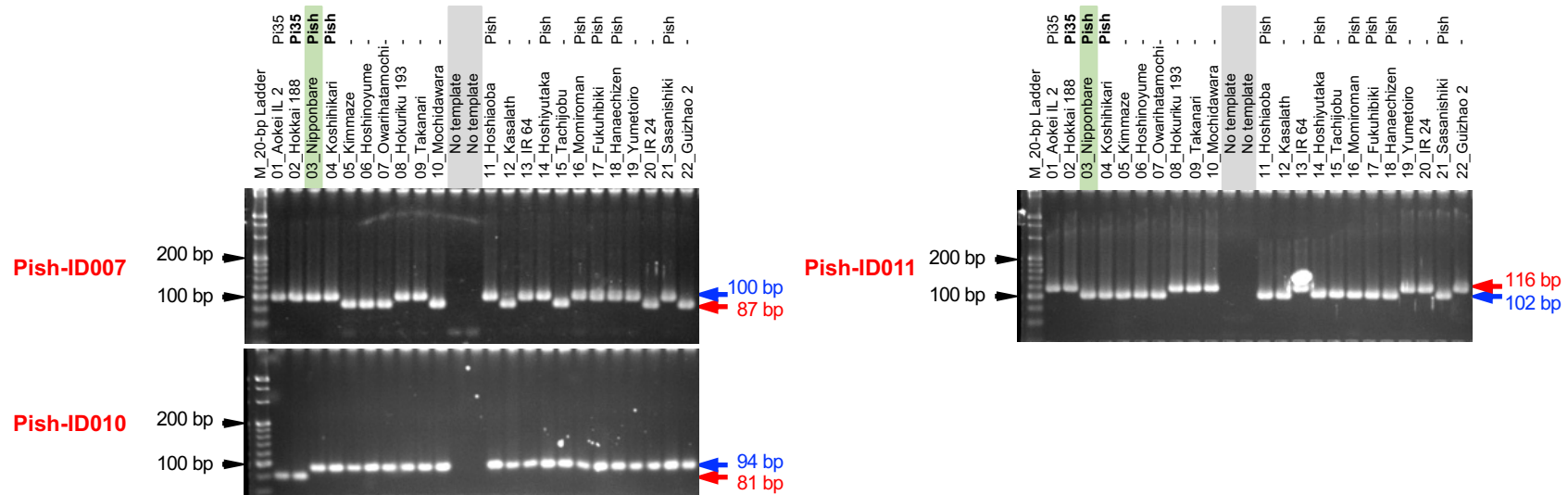
(A) Genotypes obtained by using the PCR-based markers and SNP genotyping assays. ‘Nipponbare’, donors for respective resistance alleles, and varieties that represent haplotypes obtained by SNP genotyping were selected for each locus.

Genotype A, ‘Nipponbare’ type; B or C, genotypes that differ from ‘Nipponbare’ type; AB, a genotype with amplicons of the same size as those from ‘Nipponbare’ type and the other type; -, no amplicon. For the markers Pik-ID006, Pik-ID007, and Pik-ID010 to ID015 at the Pik locus, ‘Kusabue’ type was denoted as A because of no amplification in ‘Nipponbare’ (Supplemental Fig. 11-8A). The markers in red could distinguish between the resistance allele and other alleles; they consist of a total of 23 PCR-based markers (Table 5) and the “core set” of 35 SNP genotyping assays (Supplemental Table 4). The haplotype IDs are as shown in Supplemental Table 4. The genotypes are based on the results shown in Supplemental Table 4.

(B) Sizes of the amplicons obtained by using the selected PCR-based markers (also see Table 5 for details). The 20-bp ladder lane (Takara Bio Inc., Shiga, Japan), and sizes of two or three reference bands are shown on the left. Blue and red arrows indicate the expected band size for genotype A or B, respectively (see Supplemental Table 6).

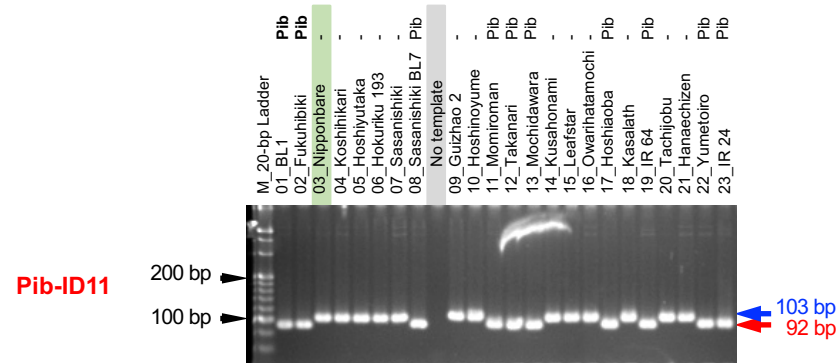
A

Sample No.	Cultivar/Line name	Target allele	SNP genotyping assays Haplotype ID	Marker	No.	IRGSP-1.0	Chr.	InDel marker genotypes														SNP-haplotype																			
								Pish-ID001	Pish-ID002	Pish-ID003	Pish-ID004	Pish-ID005	Pish-ID006	Pish-ID007	Pish-ID008	33141127	33144999	Pish-ID009	Pish-ID010	Pish-ID011	Pish-ID012	Pish-ID013	Pish-ID014	33330985	FA4649	FA4645	FA4644	FA4636	FA4627	33141127	33144999	FA4650	FA4651	FA4652	FA4654	FA4665	FA4667				
1	Aokei IL2	Pi35	Pish_H02	A	A	A	A	A	A	A	A	A	A	A	A	A	A	A	A	A	B	A	A	A	A	A	A	A	A	A	A	A	A	A	A	A	A	B	B		
2	Hokkai 188	Pi35	Pish_H02	A	A	A	A	A	A	A	A	A	A	A	A	A	A	A	A	A	B	A	A	A	A	A	A	A	A	A	A	A	A	A	A	A	A	B	B		
3	Nipponbare	Pish	Pish_H01	A	A	A	A	A	A	A	A	A	A	A	A	A	A	A	A	A	A	A	A	A	A	A	A	A	A	A	A	A	A	A	A	A	A	A	A		
4	Koshihikari	Pish	Pish_H01	A	A	A	A	A	A	A	A	A	A	A	A	A	A	A	A	A	A	A	A	A	A	A	A	A	A	A	A	A	A	A	A	A	A	A	A		
5	Kimaze	-	Pish_H03	A	A	A	A	A	A	A	A	A	B	B							A	A	A	A	A	A	A	A	A	A	A	A	A	A	A	A	A	A	A		
6	Hoshinoyume	-	Pish_H03	A	A	A	A	A	A	A	B	B									A	A	A	A	A	A	A	A	A	A	A	A	A	A	A	A	A	A	A		
7	Owarihatamochi	-	Pish_H04	A	A	A	A	A	A	A	B	B									A	A	A	A	A	A	A	A	A	A	A	A	A	A	A	A	A	A	A		
8	Hokuriku 193	-	Pish_H07	A	A	B	B	B	A	A	A	A									B	A	B	B	B	B															
9	Takanari	-	Pish_H07	A	A	B	B	B	A	A	A	A									B	A	B	B	B	B															
10	Mochidawara	-	Pish_H06	B	B	B	B	A	B	B	B										B	A	B	B	B	B															
11	Hoshiaoba	Pish	Pish_H01	A	A	A	A	A	A	A	A	A									A	A	A	A	A	A	A	A	A	A	A	A	A	A	A	A	A	A	A	A	
12	Kasalath	-	Pish_H09	A	A	B	B	A	A	A	A										A	A	A	B	B	B															
13	IR 64	-	Pish_H07	A	A	B	B	B	A	A	A	A									B	A	B	B	B	B															
14	Hoshiyutaka	Pish	Pish_H01	A	A	A	A	A	A	A	A	A									A	A	A	A	A	A	A	A	A	A	A	A	A	A	A	A	A	A	A	A	
15	Tachijobu	-	Pish_H03	A	A	A	A	A	A	A	B	B									A	A	A	A	A	A	A	A	A	A	A	A	A	A	A	A	A	A	A	A	A
16	Momiroman	Pish	Pish_H01	A	A	A	A	A	A	A	A	A									A	A	A	A	A	A	A	A	A	A	A	A	A	A	A	A	A	A	A	A	
17	Fukuhibiki	Pish	Pish_H01	A	A	A	A	A	A	A	A	A									A	A	A	A	A	A	A	A	A	A	A	A	A	A	A	A	A	A	A	A	A
18	Hanaechizen	Pish	Pish_H01	A	A	A	A	A	A	A	A	A									A	A	A	A	A	A	A	A	A	A	A	A	A	A	A	A	A	A	A	A	A
19	Yumetoiro	-	Pish_H07	A	A	B	B	B	A	A	A	A									B	A	B	B	B	B															
20	IR 24	-	Pish_H06	B	B	B	B	A	B	B	B										B	A	B	B	B	B															
21	Sasanishiki	Pish	Pish_H01	A	A	A	A	A	A	A	-										A	A	A	A	A	A	A	A	A	A	A	A	A	A	A	A	A	A	A	A	
22	Guizhao 2	-	Pish_H06	B	B	B	B	A	B	B	B										B	A	B	B	B	B															

BSupplemental Fig. 11-2. InDel marker set for *Pish* locus

A

Sample No.	Cultivar/Line name	Target allele	SNP genotyping assays Haplotype ID	InDel marker genotypes											SNP-haplotype																					
				Marker No.	IRGSP-1.0 Chr.	Pib_CDS_Upstream side						Pib_CDS_Downstream side					Pib_CDS_Upstream side						Pib_CDS_Downstream side													
						Pib-ID07	Pib-ID08	Pib-ID09	Pib-ID10	Pib-ID11	Pib-ID12	Pib-ID13	Pib-ID14	Pib-ID15	FA4424	FA4422	FA4416	FA4408	FA4407	FA4404	FA4401	FA4439	FA4446													
1	BL1	<i>Pib</i>	Pib_H01	A	A	A	B	B	B	B	-	B	B	A	B	A	B	A	B	A	B	A	B	A	B	A	B	A	B	A	B	A	B	A	B	
2	Fukuhibiki	<i>Pib</i>	Pib_H01	B	B	A	A	B	B	B	-	B	B	A	B	A	B	A	B	A	B	A	B	A	B	A	B	A	B	A	B	A	B	A	B	
3	Nipponbare	-	Pib_H02	A	A	A	A	A	A	A	A	A	A	A	A	A	A	A	A	A	A	A	A	A	A	A	A	A	A	A	A	A	A	A	A	
4	Koshihikari	-	Pib_H03	A	A	A	A	A	A	A	A	A	A	A	A	A	A	A	A	A	A	A	A	A	A	A	A	A	A	A	A	A	A	A	A	
5	Hoshiyutaka	-	Pib_H04	A	A	B	A	A	A	A	B	BC	C	A	A	A	A	A	A	A	A	A	A	A	A	A	A	A	A	A	A	A	A	A	A	
6	Hokuriku 193	-	Pib_H05	A	B	A	A	A	A	B	B	B	B	B	C	A	A	A	A	A	A	A	A	A	A	A	A	A	A	A	A	A	A	A	A	
7	Sasanishiki	-	Pib_H02	A	A	A	A	A	A	A	A	A	A	A	A	A	A	A	A	A	A	A	A	A	A	A	A	A	A	A	A	A	A	A	A	
8	Sasanishiki BL7	<i>Pib</i>	ND	B	B	A	A	B	B	B	-	B	B	A	B	A	B	A	B	A	B	A	B	A	B	A	B	A	B	A	B	A	B	A	B	
9	Guizhao 2	-	Pib_H05	A	A	B	A	A	A	B	B	B	B	B	C	A	A	A	A	A	A	A	A	A	A	A	A	A	A	A	A	A	A	A	A	
10	Hoshinoyume	-	Pib_H03	A	A	A	A	A	A	A	A	A	A	C	A	A	A	A	A	A	A	A	A	A	A	A	A	A	A	A	A	A	A	A	A	
11	Momiroman	<i>Pib</i>	Pib_H01	B	B	A	B	B	B	B	-	B	B	A	B	A	B	A	B	A	B	A	B	A	B	A	B	A	B	A	B	A	B	A	B	
12	Takanari	<i>Pib</i>	Pib_H01	B	B	A	B	B	B	B	-	B	B	A	B	A	B	A	B	A	B	A	B	A	B	A	B	A	B	A	B	A	B	A	B	
13	Mochidawara	<i>Pib</i>	Pib_H01	B	B	A	B	B	B	B	-	B	B	A	B	A	B	A	B	A	B	A	B	A	B	A	B	A	B	A	B	A	B	A	B	
14	Kusahonami	-	Pib_H04	A	A	B	A	A	A	B	B	BC	C	A	A	A	A	A	A	A	A	A	A	A	A	A	A	A	A	A	A	A	A	A	A	A
15	Leafstar	-	Pib_H04	A	A	B	A	A	A	B	B	BC	C	A	A	A	A	A	A	A	A	A	A	A	A	A	A	A	A	A	A	A	A	A	A	A
16	Owarihatamochi	-	Pib_H03	A	A	A	A	A	A	A	A	A	C	A	A	A	A	A	A	A	A	A	A	A	A	A	A	A	A	A	A	A	A	A	A	A
17	Hoshiaoba	<i>Pib</i>	Pib_H01	B	B	A	B	B	B	B	-	B	B	A	B	A	B	A	B	A	B	A	B	A	B	A	B	A	B	A	B	A	B	A	B	
18	Kasalath	-	Pib_H08	A	A	B	A	A	A	B	B	A	A	B	C	A	A	A	A	A	A	A	A	A	A	A	A	A	A	A	A	A	A	A	A	A
19	IR 64	<i>Pib</i>	Pib_H01	B	B	A	B	B	B	B	-	B	B	B	B	B	B	B	B	B	B	B	B	B	B	B	B	B	B	B	B	B	B	B	B	B
20	Tachijobu	-	Pib_H02	A	A	A	A	A	A	A	A	A	A	A	A	A	A	A	A	A	A	A	A	A	A	A	A	A	A	A	A	A	A	A	A	A
21	Hanaechizen	-	Pib_H02	A	A	A	A	A	A	A	A	A	A	A	A	A	A	A	A	A	A	A	A	A	A	A	A	A	A	A	A	A	A	A	A	A
22	Yumetoiro	<i>Pib</i>	Pib_H01	B	B	A	B	B	B	B	-	B	B	A	B	A	B	A	B	A	B	A	B	A	B	A	B	A	B	A	B	A	B	A	B	
23	IR 24	<i>Pib</i>	Pib_H01	B	B	A	B	B	B	B	-	B	B	A	B	A	B	A	B	A	B	A	B	A	B	A	B	A	B	A	B	A	B	A	B	

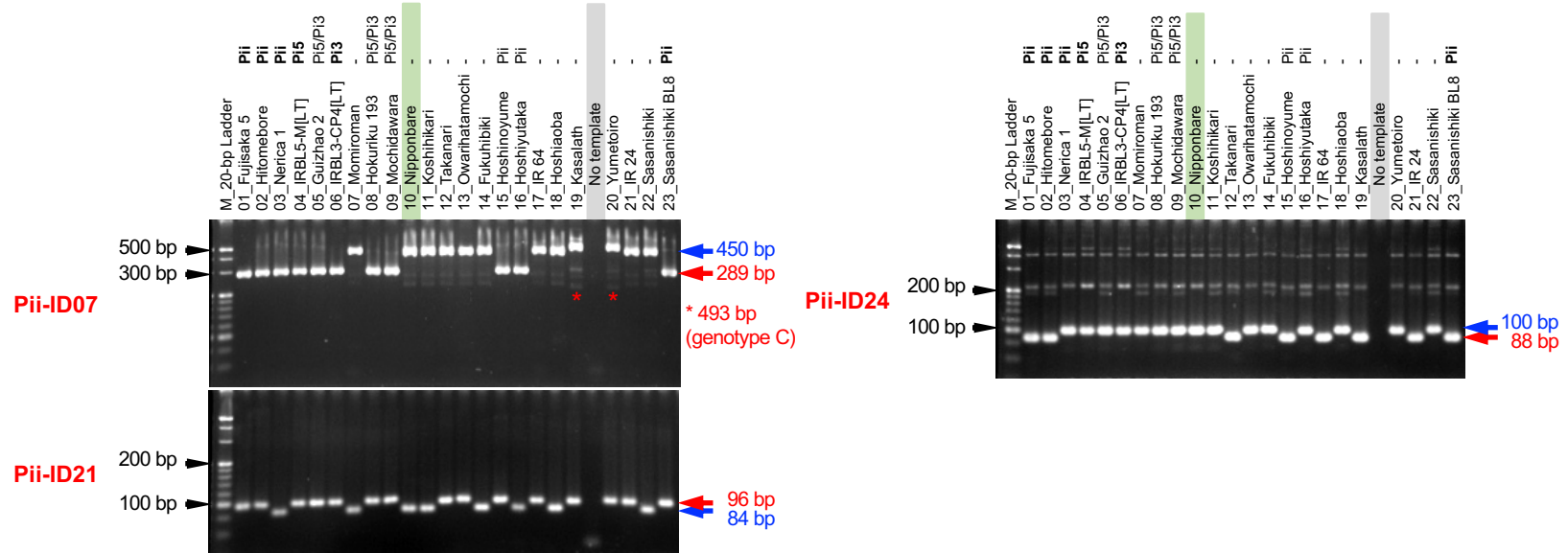
B

Supplemental Fig. 11-3. InDel marker set for *Pib* locus

A

Sample No.	Cultivar/Line name	Target allele	Haplotype ID	InDel marker genotypes													SNP-haplotype									
				Marker No.	IRGSP-1.0 Chr.	Pii-ID02	Pii-ID01	Pii-ID04	Pii-ID18	Pii-ID07	Pii-ID19	Pii-ID20	Pii-ID21	Pii-ID22	Pii-ID23	Pii-ID24	Pii-ID25	Pii-ID26	FA4515	FA4505	FA4494	FA4495	FA4501	FA4526	FA4527	FA4533
1	Fujisaka 5	<i>Pii</i>	Pii_H01-1			B	B	B	B	B	B	B	B	B	B	B	B	A	B	A	B	B	B	B	B	B
2	Hitomebore	<i>Pii</i>	Pii_H01-1			B	B	B	B	B	B	B	B	B	B	B	B	A	B	A	B	B	B	B	B	B
3	Nerica 1	<i>Pii</i>	Pii_H01-2			A	A	A	B	B	B	B	B	B	B	B	B	A	B	A	B	B	B	B	B	B
4	IRBL5-M[LT]	<i>Pi5</i>	Pii_H02			B	B	B	B	B	B	B	B	B	B	B	B	B	B	B	A	B	B	B	B	B
5	Guizhao 2	<i>Pi5/Pi3</i>	Pii_H02			B	B	B	B	B	B	B	B	B	B	B	B	B	B	B	A	B	B	B	B	B
6	IRBL3-CP4[LT]	<i>Pi3</i>	Pii_H02			B	B	B	B	B	B	B	B	B	B	B	B	B	B	B	A	B	B	B	B	B
7	Momiroman	-	Pii_H03			A	A	A	A	A	A	A	A	A	A	A	A	A	A	A	A	A	A	A	A	A
8	Hokuriku 193	<i>Pi5/Pi3</i>	Pii_H02			B	B	B	B	B	B	B	B	B	B	B	B	B	B	B	A	B	B	B	B	B
9	Mochidawara	<i>Pi5/Pi3</i>	Pii_H02			B	B	B	B	B	B	B	B	B	B	B	B	B	B	B	A	B	B	B	B	B
10	Nipponbare	-	Pii_H03			A	A	A	A	A	A	A	A	A	A	A	A	A	A	A	A	A	A	A	A	A
11	Koshihikari	-	Pii_H03			A	A	A	A	A	A	A	A	A	A	A	A	A	A	A	A	A	A	A	A	A
12	Takanari	-	Pii_H04			A	A	A	A	A	A	A	A	A	A	A	A	A	A	A	A	A	A	A	A	A
13	Owarihatamochi	-	Pii_H06			A	A	A	A	A	A	A	A	A	A	A	A	A	A	A	A	A	A	A	A	A
14	Fukuhibiki	-	Pii_H03			A	A	A	A	A	A	A	A	A	A	A	A	A	A	A	A	A	A	A	A	A
15	Hoshinoyume	<i>Pii</i>	Pii_H01-1			B	B	B	B	B	B	B	B	B	B	B	B	A	B	A	B	B	B	B	B	B
16	Hoshiyutaka	<i>Pii</i>	Pii_H01-2			A	A	A	B	B	B	B	B	B	B	B	B	A	B	A	B	B	B	B	B	B
17	IR 64	-	Pii_H04			A	A	A	A	A	A	A	A	A	A	A	A	A	A	A	A	A	A	A	A	A
18	Hoshiaoba	-	Pii_H03			A	A	A	A	A	A	A	A	A	A	A	A	A	A	A	A	A	A	A	A	A
19	Kasalath	-	Pii_H08			B	B	B	B	C	C	C	C	C	C	C	C	A	A	A	A	A	A	A	A	A
20	Yumetoiro	-	Pii_H09			B	B	B	A	C	C	C	C	C	C	C	C	A	A	A	A	A	A	A	A	A
21	IR 24	-	Pii_H04			A	A	A	A	A	A	A	A	A	A	A	A	A	A	A	A	A	A	A	A	A
22	Sasanishiki	-	Pii_H03			A	A	A	A	A	A	A	A	A	A	A	A	A	A	A	A	A	A	A	A	A
23	Sasanishiki BL8	<i>Pii</i>	ND			B	B	B	B	B	B	B	B	B	B	B	B	A	B	A	B	B	B	B	B	B

B

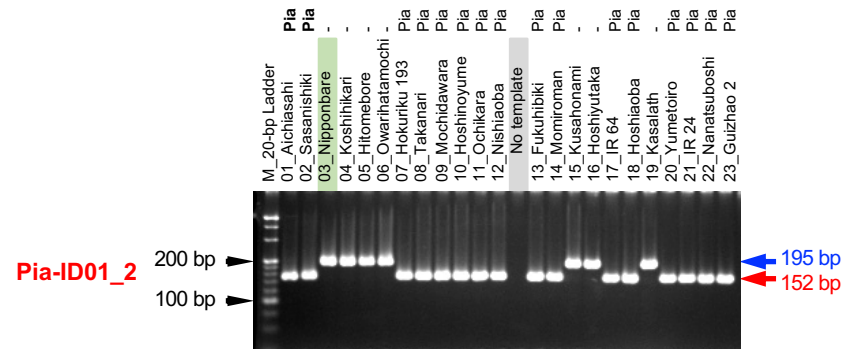


Supplemental Fig. 11-6. InDel marker set for *Pii* locus

A

Sample No.	Cultivar/Line name	Target allele	SNP genotyping assays Haplotype ID	InDel marker genotypes												SNP-haplotype																																											
				Chr. 11																																																							
				Marker No.	IRGSP-1.0				Pia-ID01_2				Pia-ID06				FA4608		FA4605		FA4598		FA4615		FA4617		FA4620		FA4624		FA4625																												
1	Aichiasahi	<i>Pia</i>	Pia_H01-1	Pia-ID02	1	6375786	11	Pia-ID03	2	6400787	11	Pia-ID04	3	6522517	11	Pia-ID05	4	6523786	11	Pia-ID01_2	5	6544602	11	Pia-ID06	6	6562152	11	FA4608	1	6521353	11	FA4605	2	6540957	11	FA4598	3	6543100	11	FA4615	4	6544401	11	FA4617	5	6634911	11	FA4620	6	6638905	11	FA4624	7	6656541	11	FA4625	8	6707030	11
2	Sasanishiki	<i>Pia</i>	Pia_H01-1	A	A	B	B	A	A	B	B	A	A	B	B	B	B	-	-	B	A	-	-	B	A	-	-	B	A	-	-	B	A	-	-	B	A	-	-	B	A	-	-																
3	Nipponbare	-	Pia_H02	A	A	A	A	A	A	A	A	A	A	A	A	A	A	A	A	A	A	A	A	A	A	A	A	A	A	A	A	A	A	A	A	A	A	A	A	A	A	A	A																
4	Koshihikari	-	Pia_H03	A	A	A	A	A	A	A	A	A	A	A	A	A	A	A	A	A	A	A	A	A	A	A	A	A	A	A	A	A	A	A	A	A	A	A	A	A	A	A	A																
5	Hitomebore	-	Pia_H03	A	A	A	A	A	A	A	A	A	A	A	A	A	A	A	A	A	A	A	A	A	A	A	A	A	A	A	A	A	A	A	A	A	A	A	A	A	A	A	A																
6	Owarihatamochi	-	Pia_H06	A	A	A	A	A	A	A	A	A	A	A	A	A	A	A	A	A	A	A	A	A	A	A	A	A	A	A	A	A	A	A	A	A	A	A	A	A	A	A	A																
7	Hokuriku 193	<i>Pia</i>	Pia_H04	B	B	A	B	B	B	A	B	B	B	A	B	B	B	A	B	A	B	-	-	A	B	-	-	B	A	-	-	A	B	-	-	A	B	-	-	A	B	-	-																
8	Takanari	<i>Pia</i>	Pia_H04	B	B	A	B	B	B	A	B	B	B	A	B	B	B	A	B	B	B	A	B	B	B	A	B	B	B	A	B	B	B	A	B	B	B	A	B	B	B	A	B																
9	Mochidawara	<i>Pia</i>	Pia_H04	B	B	A	B	B	B	A	B	B	B	A	B	B	B	A	B	B	B	A	B	B	B	A	B	B	B	A	B	B	B	A	B	B	B	A	B	B	B	A	B																
10	Hoshinoyume	<i>Pia</i>	Pia_H01-2	A	A	B	B	A	A	B	B	A	A	B	B	A	A	B	B	B	B	-	-	B	B	-	-	B	B	-	-	B	B	-	-	B	B	-	-	B	B	-	-																
11	Ochikara	<i>Pia</i>	Pia_H01-2	A	A	B	B	A	A	B	B	A	A	B	B	A	A	B	B	B	B	-	-	B	B	-	-	B	B	-	-	B	B	-	-	B	B	-	-	B	B	-	-																
12	Nishiaoba	<i>Pia</i>	Pia_H01-2	A	A	B	B	A	A	B	B	A	A	B	B	A	A	B	B	B	B	-	-	B	B	-	-	B	B	-	-	B	B	-	-	B	B	-	-	B	B	-	-																
13	Fukuhibiki	<i>Pia</i>	Pia_H01-1	A	A	B	B	A	A	B	B	A	A	B	B	A	A	B	B	B	B	-	-	B	B	-	-	B	B	-	-	B	B	-	-	B	B	-	-	B	B	-	-																
14	Momiroman	<i>Pia</i>	Pia_H01-1	A	A	B	B	A	A	B	B	A	A	B	B	A	A	B	B	B	B	-	-	B	B	-	-	B	B	-	-	B	B	-	-	B	B	-	-	B	B	-	-																
15	Kusahonami	-	Pia_H03	A	A	A	A	A	A	A	A	A	A	A	A	A	A	A	A	A	A	A	A	A	A	A	A	A	A	A	A	A	A	A	A	A	A	A	A	A	A	A	A	A	A	A	A												
16	Hoshiyutaka	-	Pia_H03	A	A	A	A	A	A	A	A	A	A	A	A	A	A	A	A	A	A	A	A	A	A	A	A	A	A	A	A	A	A	A	A	A	A	A	A	A	A	A	A	A	A	A	A												
17	IR 64	<i>Pia</i>	Pia_H04	B	B	A	B	B	B	A	B	B	B	A	B	B	B	A	B	B	B	A	B	A	B	-	-	B	A	-	-	A	B	-	-	A	B	-	-	A	B	-	-	A	B	-	-												
18	Hoshiaoba	<i>Pia</i>	Pia_H04	B	B	A	B	B	B	A	B	B	B	A	B	B	B	A	B	B	B	A	B	B	B	A	B	B	B	A	B	B	B	A	B	B	B	A	B	B	B	A	B																
19	Kasalath	-	Pia_H03	A	A	A	A	A	A	A	A	A	A	A	A	A	A	A	A	A	A	A	A	A	A	A	A	A	A	A	A	A	A	A	A	A	A	A	A	A	A	A	A	A	A	A	A												
20	Yumetoiro	<i>Pia</i>	Pia_H04	B	B	A	B	B	B	A	B	B	B	A	B	B	B	A	B	B	B	A	B	A	B	-	-	B	A	-	-	A	B	-	-	A	B	-	-	A	B	-	-	A	B	-	-												
21	IR 24	<i>Pia</i>	Pia_H04	B	B	A	B	B	B	A	B	B	B	A	B	B	B	A	B	B	B	A	B	B	B	A	B	B	B	A	B	B	B	A	B	B	B	A	B	B	B	A	B																
22	Nanatsuboshi	<i>Pia</i>	Pia_H01-2	A	A	B	B	A	A	B	B	A	A	B	B	A	A	B	B	B	B	-	-	B	B	-	-	B	B	-	-	B	B	-	-	B	B	-	-	B	B	-	-	B	B	-	-												
23	Guizhao 2	<i>Pia</i>	Pia_H07	B	B	A	B	B	B	A	B	B	B	A	B	B	B	A	B	B	B	A	B	A	B	-	-	A	B	-	-	A	B	-	-	A	B	-	-	A	B	-	-	A	B	-	-												

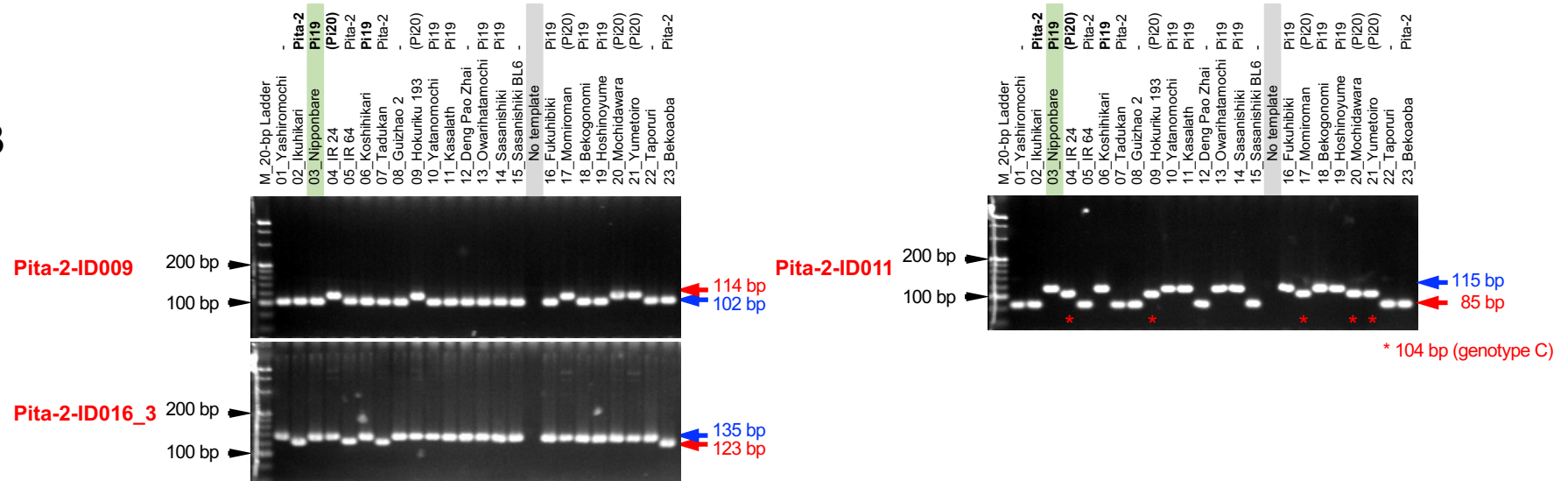
B



Supplemental Fig. 11-7. InDel marker set for *Pia* locus

A

Sample No.	Cultivar/Line name	Target allele	SNP genotyping assays Haplotype ID	InDel marker genotypes															SNP-haplotype											
				Marker	No.	IRGSP-1.0 Chr.	1	2	3	4	5	6	7	8	9	10	11	12	13	14	15	FA4580	FA4571	FA4572	FA4565	FA4585	FA4588			
1	Yashiromochi	-	Pita-2_H03	Pita-2-ID001	1	10725835	12	B	B	B	B	B	A	A	A	10824087	12	A	B	B	A	B	A	B	B	A	A	A	B	B
2	Ikuhikari	<i>Pita-2</i>	Pita-2_H01	Pita-2-ID002	2	10736661	12	B	B	B	B	B	A	A	A	10833348	12	B	B	B	A	B	A	B	B	A	A	A	B	B
3	Nipponbare	<i>Pi19</i>	Pita-2_H02	Pita-2-ID003	3	10745092	12	A	A	A	A	A	A	A	A	10833494	12	A	A	A	A	A	A	A	A	A	A	A	A	
4	IR 24	<i>(Pi20)</i>	Pita-2_H04	Pita-2-ID004	4	10760837	12	A	A	B	B	-	B	B	B	10853795	12	A	B	C	B	-	B	A	A	A	A	A	A	B
5	IR 64	<i>Pita-2</i>	Pita-2_H01	Pita-2-ID006	6	10771016	12	B	B	B	B	B	A	A	A	10862608	12	B	B	B	A	B	A	B	B	A	A	A	B	B
6	Koshihikari	<i>Pi19</i>	Pita-2_H02	Pita-2-ID007	7	10797537	12	A	A	A	A	A	A	A	A	10876975	12	A	A	A	A	A	A	A	A	A	A	A	A	
7	Tadukan	<i>Pita-2</i>	Pita-2_H01	Pita-2-ID008	8	10810754	12	B	B	B	B	A	A	A	A	10894020	12	B	B	B	A	B	A	B	B	A	A	A	B	B
8	Guizhao 2	-	Pita-2_H03	<i>Pita-2-ID009</i>	9	10815778	12	B	B	B	B	B	A	A	A	10896196	12	B	B	B	A	B	A	B	B	A	A	A	B	B
9	Hokuriku 193	<i>(Pi20)</i>	Pita-2_H04	<i>Pita-2_CDS_Upstream side</i>	10	10833348	12	A	A	A	A	A	A	A	A	10801324	12	A	B	C	B	-	B	A	A	A	A	A	A	A
10	Yatanomochi	<i>Pi19</i>	Pita-2_H06	<i>Pita-2_CDS_Downstream side</i>	11	10853795	12	B	-	B	B	-	A	A	A	10830872	12	B	B	B	A	B	A	B	B	A	A	A	B	B
11	Kasalath	<i>Pi19</i>	Pita-2_H02	<i>Pita-2_CDS_Upstream side</i>	12	10862608	12	A	A	A	A	A	A	A	A	10833033	12	A	A	A	A	A	A	A	A	A	A	A	A	
12	Deng Pao Zhai	-	Pita-2_H03	<i>Pita-2_CDS_Downstream side</i>	13	10876975	12	B	B	B	B	A	A	A	A	10833387	12	B	B	B	A	B	A	B	B	A	A	A	B	B
13	Owarihatamochi	<i>Pi19</i>	Pita-2_H02	<i>Pita-2_CDS_Upstream side</i>	14	10894020	12	A	A	A	A	A	A	A	A	10833494	12	A	A	A	A	A	A	A	A	A	A	A	A	
14	Sasanishiki	<i>Pi19</i>	Pita-2_H02	<i>Pita-2_CDS_Downstream side</i>	15	10896196	12	A	A	A	A	A	A	A	A	10849598	12	A	A	A	A	A	A	A	A	A	A	A	A	
15	Sasanishiki BL6	-	ND					B	B	B	B	A	A	A			B	B	A	B	A	B		A	A	A	A	A		
16	Fukuhibiki	<i>Pi19</i>	Pita-2_H02					A	A	A	A	A	A	A			A	A	A	A	A	A		A	A	A	A	A		
17	Momiroman	<i>(Pi20)</i>	Pita-2_H04					A	A	B	-	B	B	B			B	C	B	-	B	A		B	B	-	A	B		
18	Bekogonomi	<i>Pi19</i>	Pita-2_H02					A	A	A	A	A	A	A			A	A	A	A	A	A		A	A	A	A	A		
19	Hoshinoyume	<i>Pi19</i>	Pita-2_H02					A	A	A	A	A	A	A			A	A	A	A	A	A		A	A	A	A	A		
20	Mochidawara	<i>(Pi20)</i>	Pita-2_H04					A	A	B	B	-	B	B			B	C	B	-	B	A		B	B	-	A	B		
21	Yumetoiro	<i>(Pi20)</i>	Pita-2_H04					A	A	B	B	-	B	B			A	B	C	B	-	B	A		B	B	-	A	B	
22	Taporuri	-	Pita-2_H03					B	B	B	B	A	A	A			B	B	A	B	A	B		B	A	A	A	B		
23	Bekooba	<i>Pita-2</i>	Pita-2_H01					B	B	B	B	A	A	A			B	B	A	B	A	B		B	A	A	B	B		

BSupplemental Fig. 11-10. InDel marker set for *Pita-2* locus