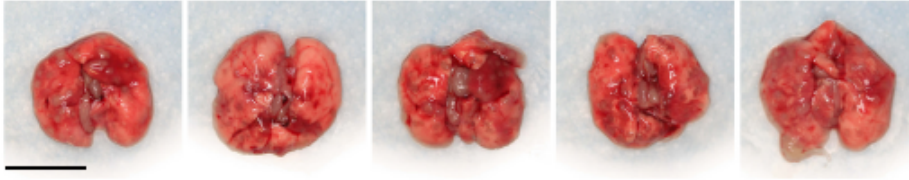
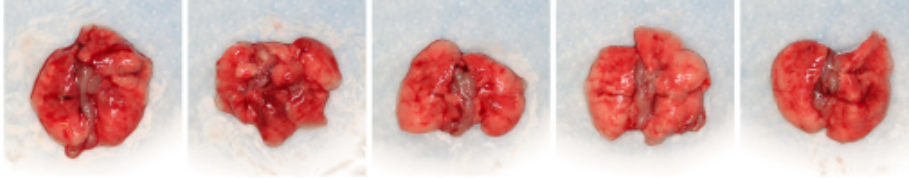


A

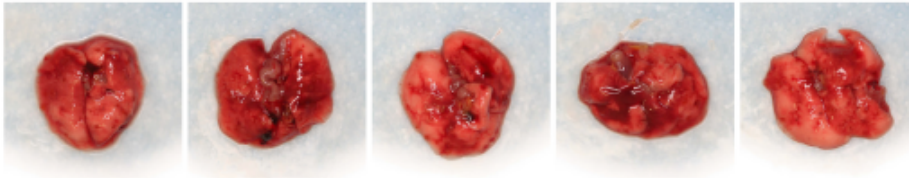
Sham



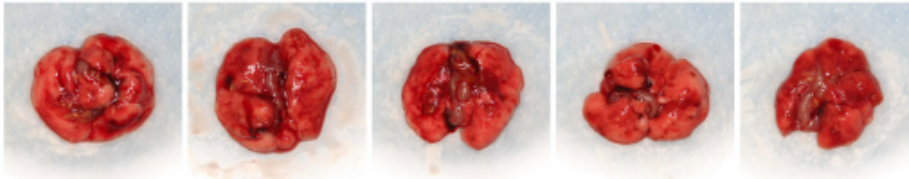
Standard Regimen



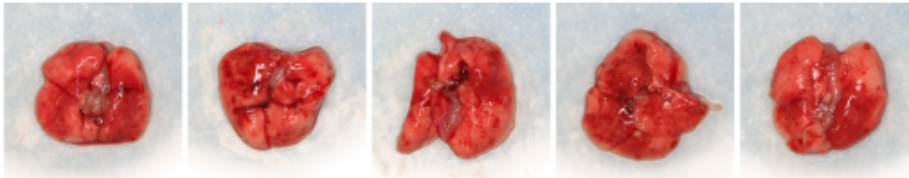
PRS Regimen III



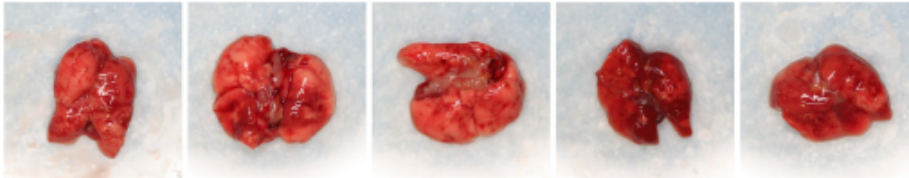
PRS Regimen IV



PRS Regimen V

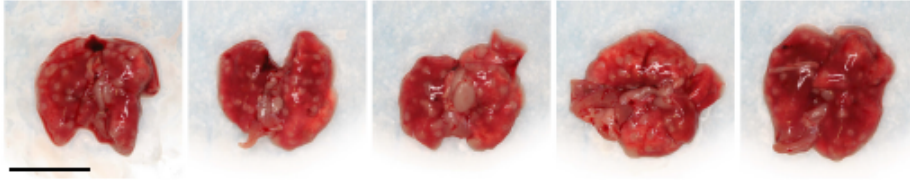


PRS Regimen VI

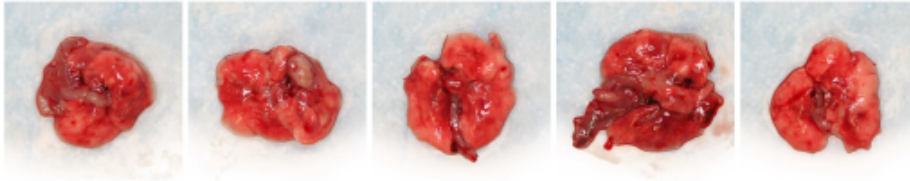


B

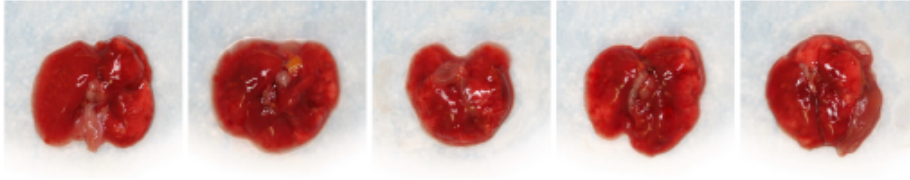
Sham



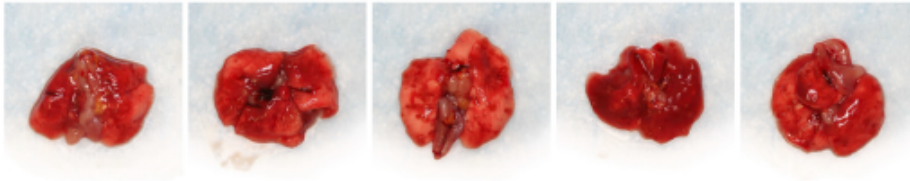
Standard Regimen



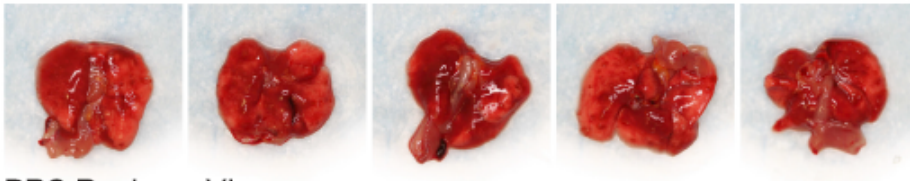
PRS Regimen III



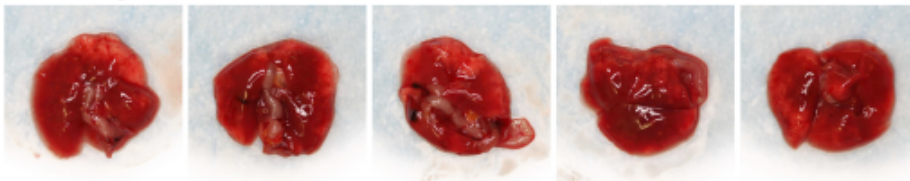
PRS Regimen IV



PRS Regimen V

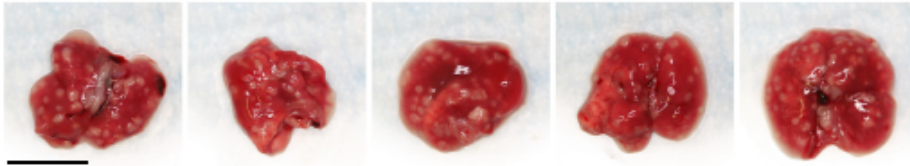


PRS Regimen VI

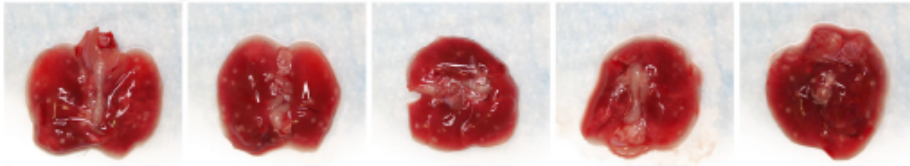


C

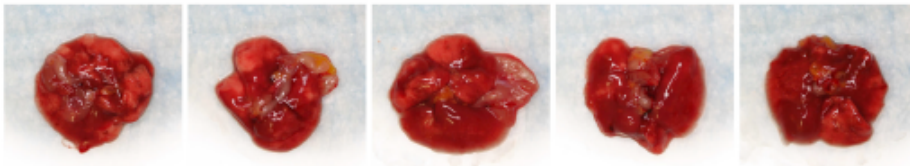
Sham



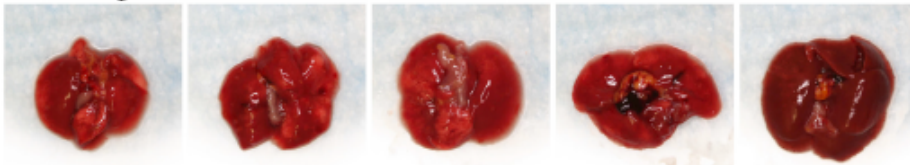
Standard Regimen



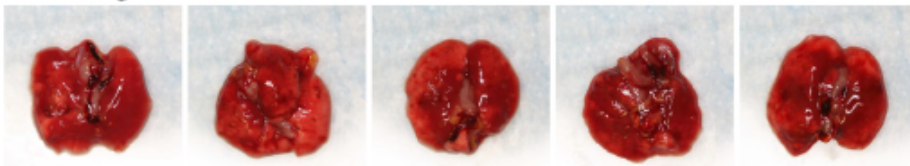
PRS Regimen III



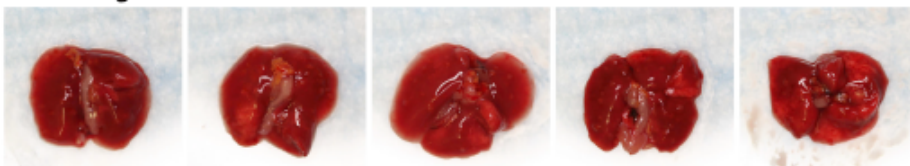
PRS Regimen IV



PRS Regimen V



PRS Regimen VI



S2 Fig. Lung pathology in mice upon completion of 3, 4, and 5 weeks of treatment. Mice were infected with *M. tuberculosis* Erdman by aerosol and two weeks later received sham treatment or treatment with the Standard Regimen (INH, RIF, EMB, PZA at 25, 10, 100, 150 mg/kg), PRS Regimen III (CFZ, BDQ, PZA, SQ109 at 25, 30, 450, 25 mg/kg), PRS Regimen IV (CFZ, BDQ, PZA, AC at 25, 37, 50, 66.7-16.7 mg/kg), PRS Regimen V (CFZ, BDQ, PZA, DLM at 25, 40, 185, 0.83 mg/kg) or PRS Regimen VI (CFZ, BDQ, PZA at 25, 40, 185 mg/kg) 5 days per week for (A) 3 weeks, (B) 4 weeks, and (C) 5 weeks. The mice were euthanized upon treatment completion and their lungs were imaged. Scale bar (upper left panel), 1 cm.