
| Database | Search terms |
|----------------|--|
| CENTRAL | #1. kidney transplant* #2. ELISPOT #3. #1 and #2 |
| MEDLINE (OVID) | 1. exp kidney transplantation/ 2. Enzyme-linked Immunospot Assay/ 3. 1 and 2 |
| EMBASE | 1.transplantation/exp 2. elispot 3 #1 AND #2 |

Table S1. Databases and search strategy.

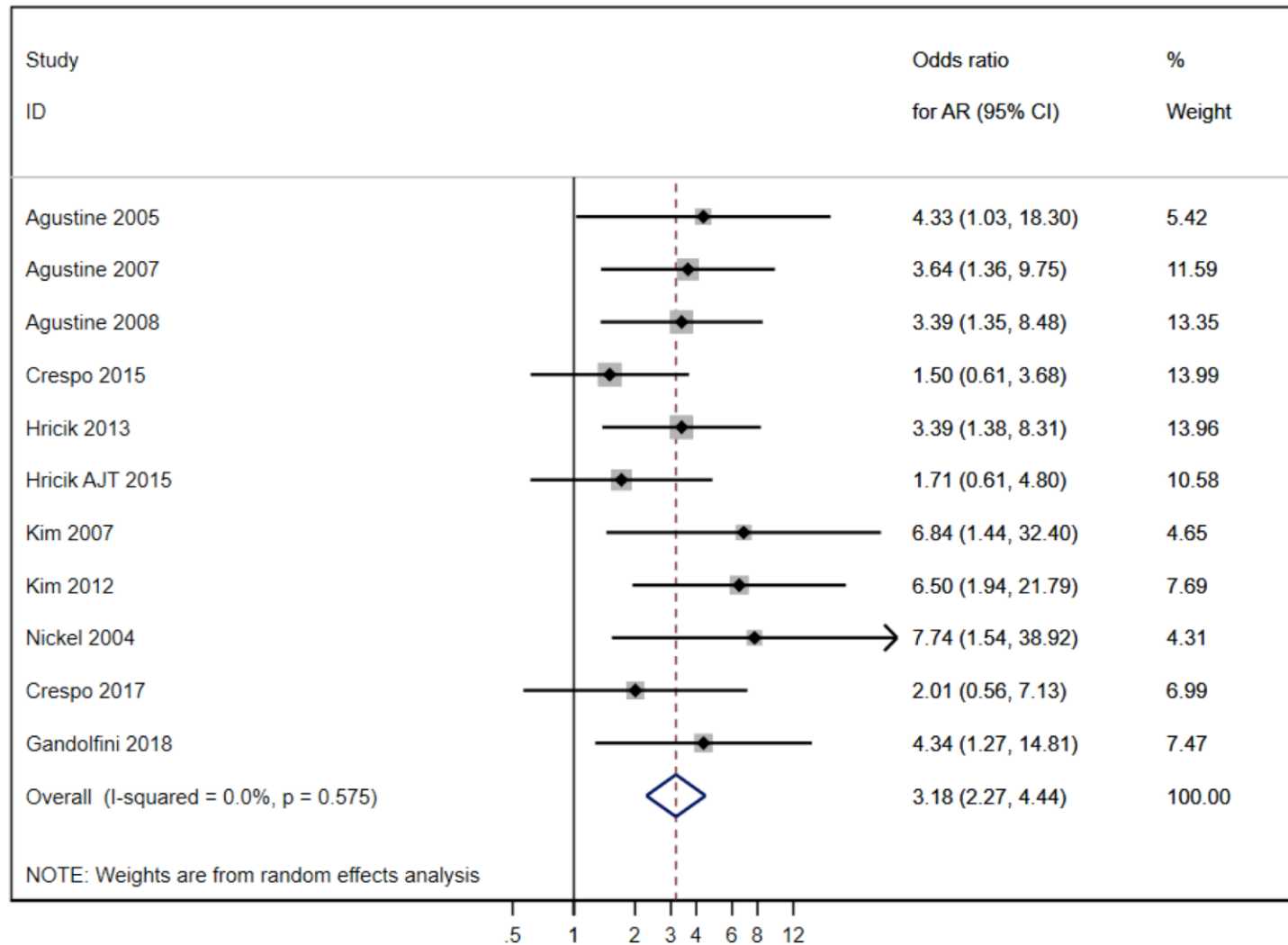


Figure S1. Forest plot analysis of acute rejection, excluding the tacrolimus withdrawal study.

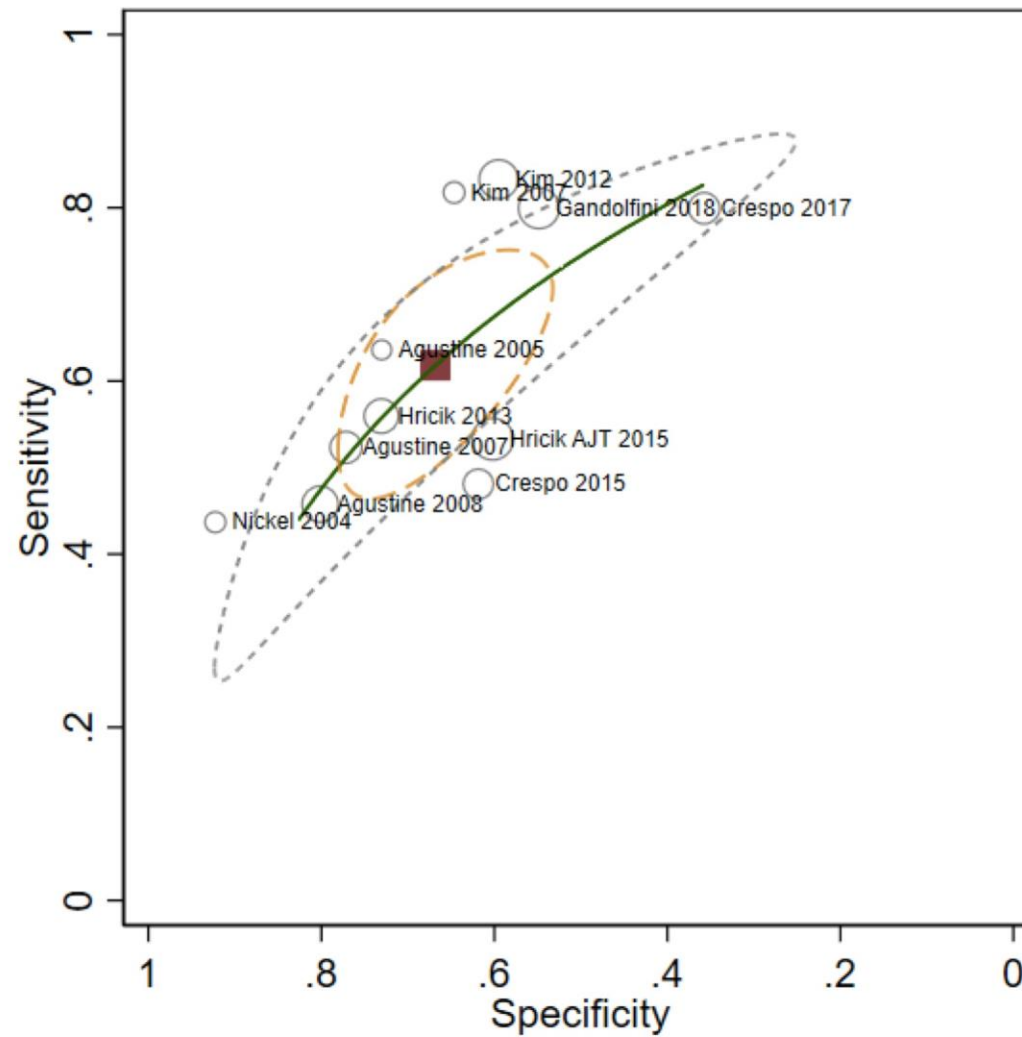
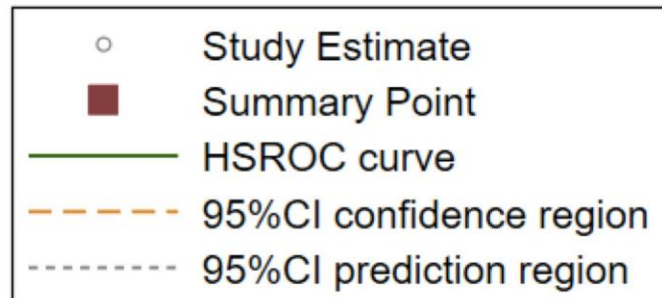


Figure S2. Hierarchical summary receiver operating characteristic (HSROC) plot of analysis of acute rejection, excluding the tacrolimus withdrawal study.



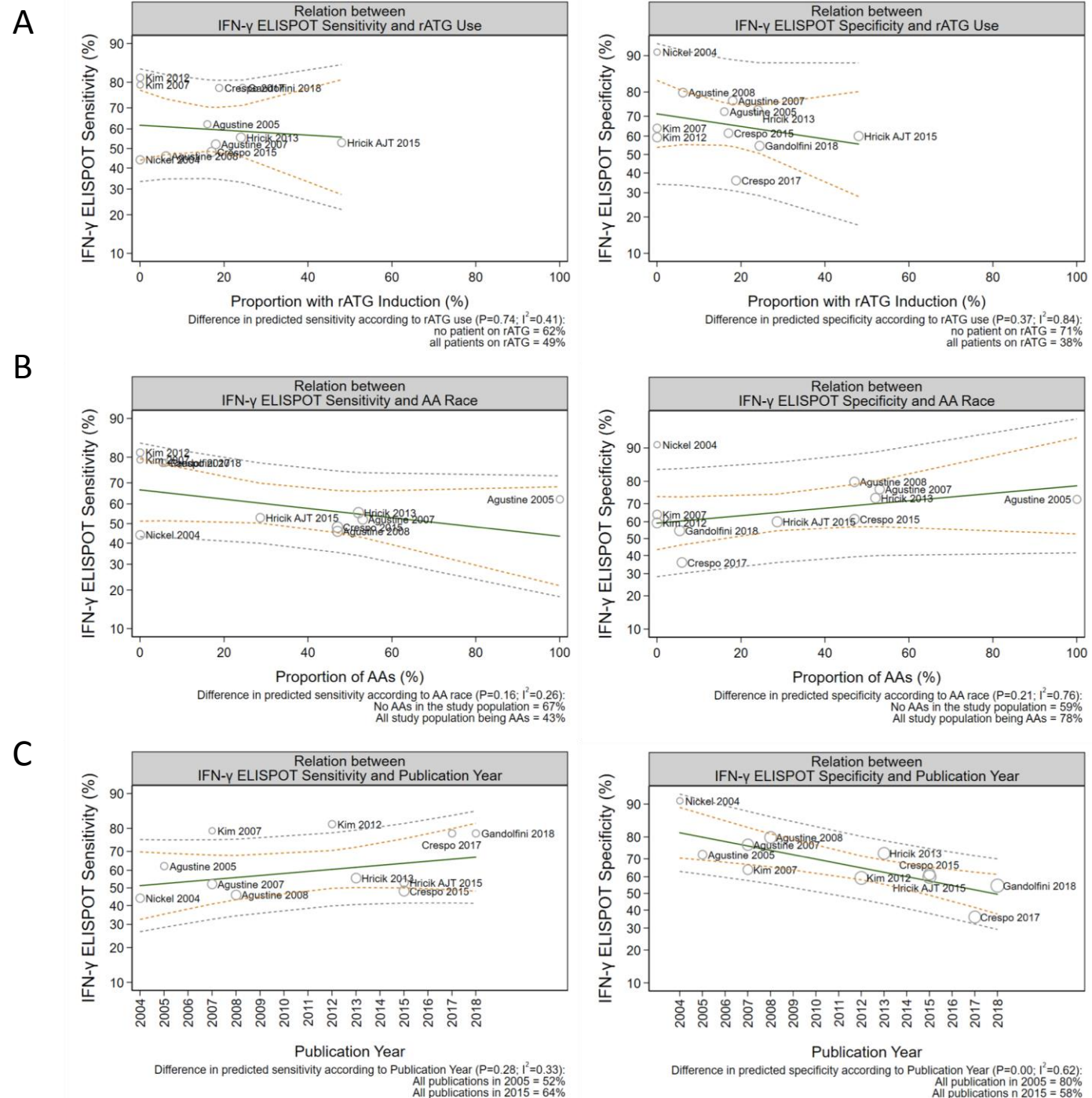


Figure S3. Relationship between sensitivity or specificity and the prevalence of thymoglobulin use (panel A), the prevalence of African Americans (panel B), the publication year (panel C) of each study, estimated by random-effects metaanalysis (ie, metaregression) after exclusion of tacrolimus withdrawal study.

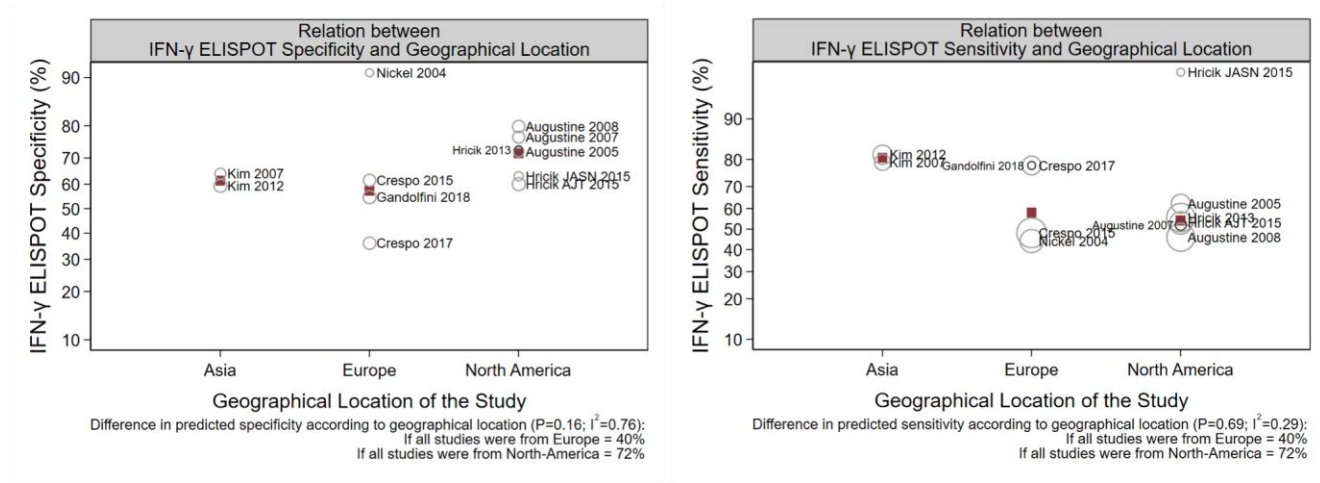


Figure S4. Relationship between sensitivity or specificity and the geographical area of the study.