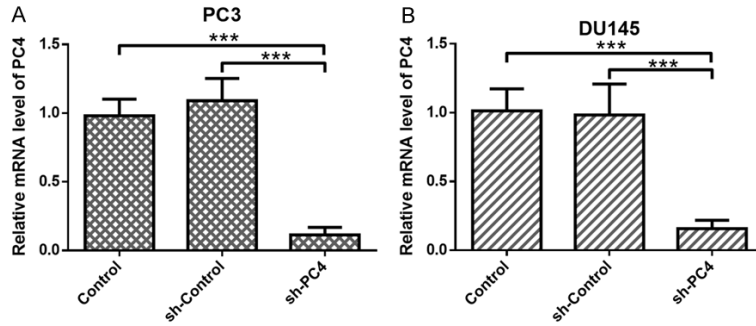


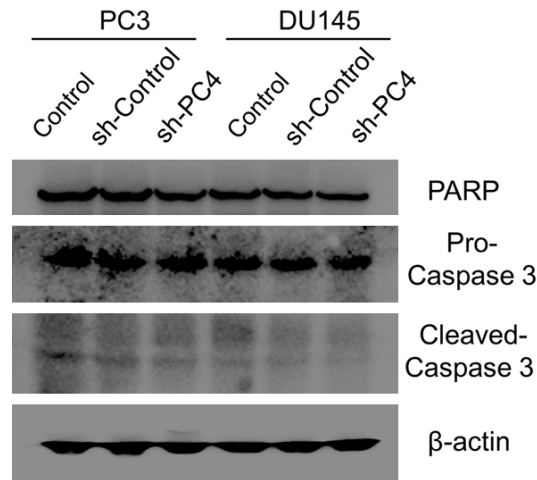
## PC4/HIF-1 $\alpha$ / $\beta$ -catenin promotes AIPC progression

**Table S1.** List of utilized primer sequence for real-time qPCR

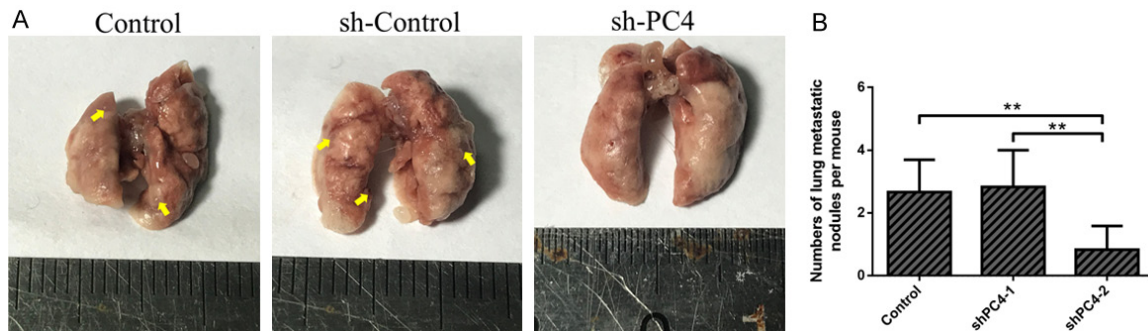
Gene	Forward	Reverse
PC4	TGATTCTGACAGTGAGGTTGAC	TTATCATCTCTGCTGCTGCTG
HIF-1 $\alpha$	GACAGCCTCACCAAACAGAG	CTCAAAGCGACAGATAACAG
$\beta$ -actin	GGACTTCGAGCAAGAGATGG	AGCACTGTGTTGGCGTACAG



**Figure S1.** The PC4 knockout efficiency were examined by qPCR in PC3 (A) and DU145 (B) cells. All data indicate the mean  $\pm$  SD. \*\*\*P<0.001.



**Figure S2.** The protein levels of apoptosis markers (PARP, Pro-Caspase 3 and Cleaved-Caspase 3) were determined by Western Blot in stable PC4 knockdown cell lines (PC3 and DU145 cells) and controls.



**Figure S3.** A. Tail vein injection of stable PC4-knockdown and control PC3 cells into athymic male nude mice were used to establish lung metastasis model. Lung tissue was dissected and photographed at the endpoint. B. Statistical analysis of lung metastatic lesions per mouse in PC4 knockdown group and control groups. All data indicate the mean  $\pm$  SD. \*\*P<0.01.