

## **S1 Appendix**

Fig. A

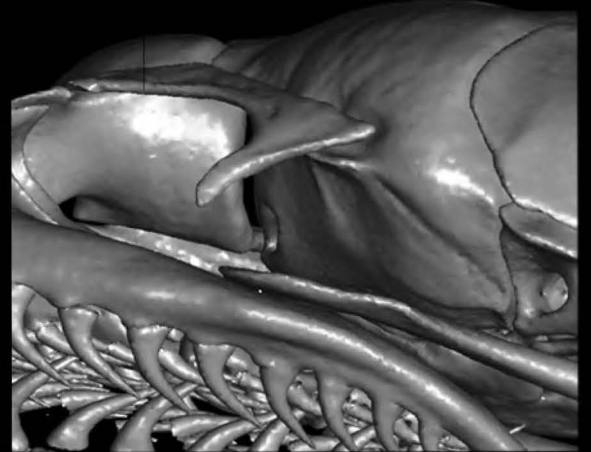
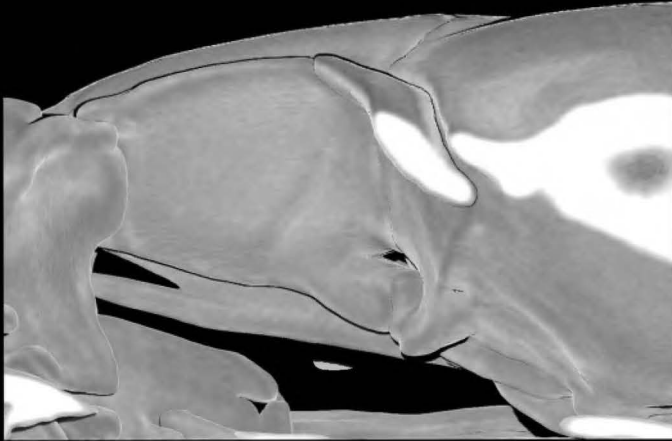
Tropidophiidae

*Tropidophis nigriventris*

Acrochordidae

*Acrochordus granulatus*

Lateral



Dorsal



Oblique



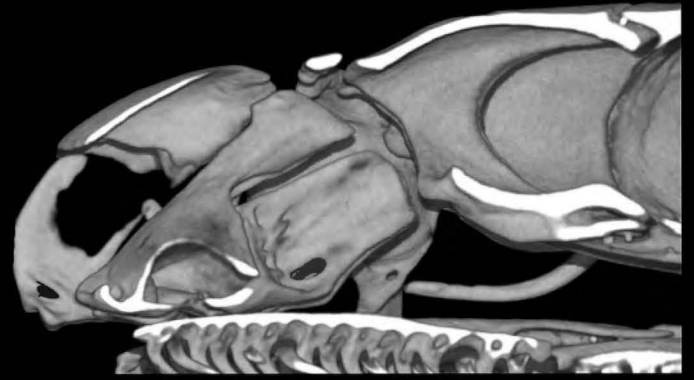
Fig. B

Xenodermidae

*Achalinus spinalis*

*Fimbrios klossi*

Lateral



Dorsal



Oblique



Fig. C

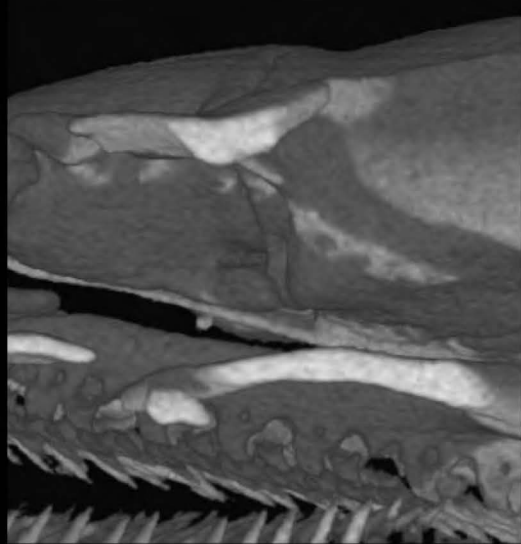
Xenodermidae

*Xenodermus javanicus*

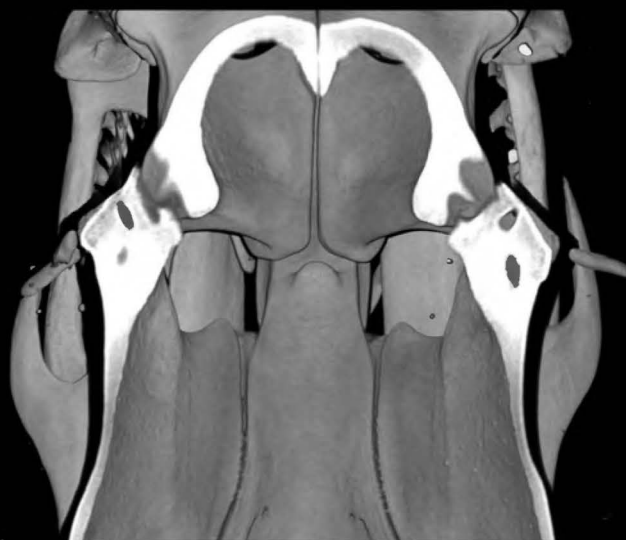
Xylophiidae

*Xylophis perroteti*

Lateral



Dorsal



Oblique

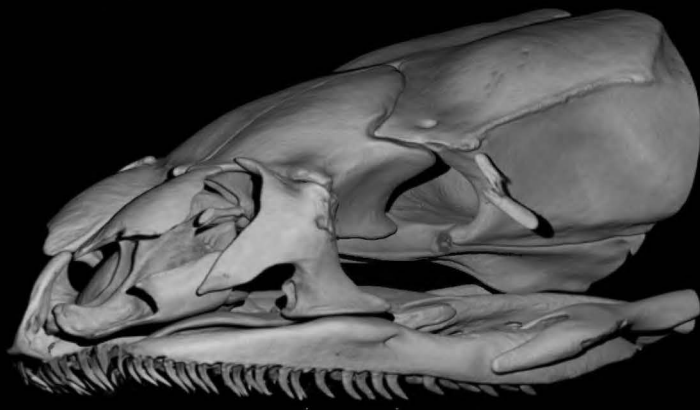




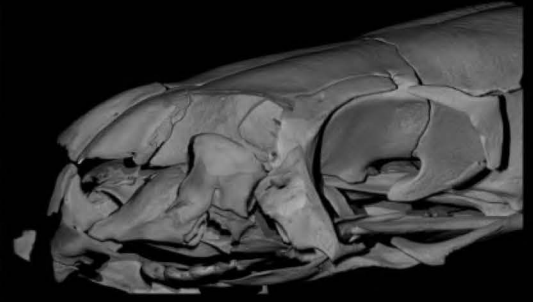
Fig. D

Pareidae

Lateral

Oblique

*Pareas moellendorffi*



*Aplopeltura boa*



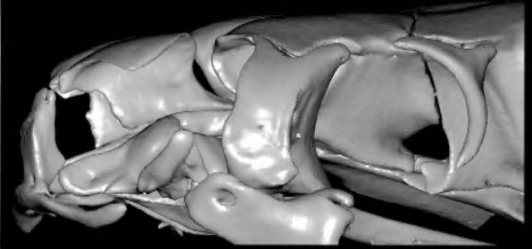
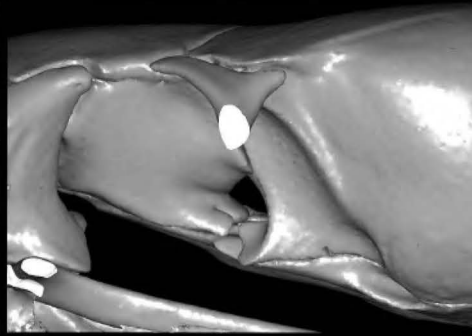
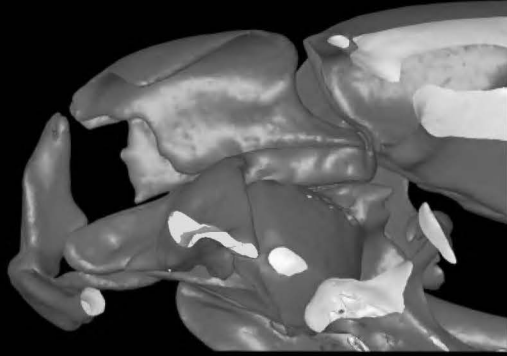
Fig. E

Viperidae

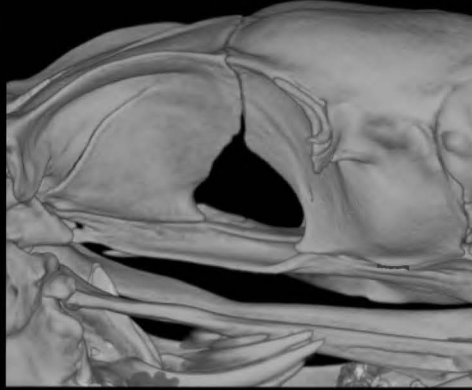
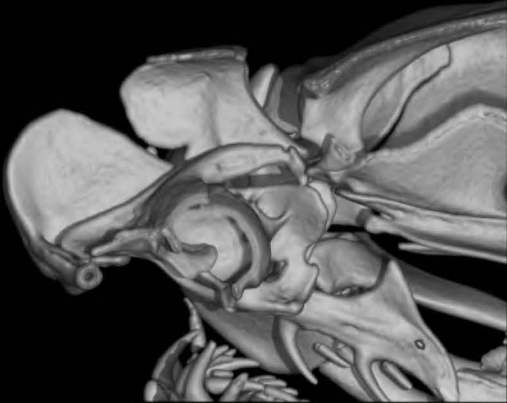
Lateral

Oblique

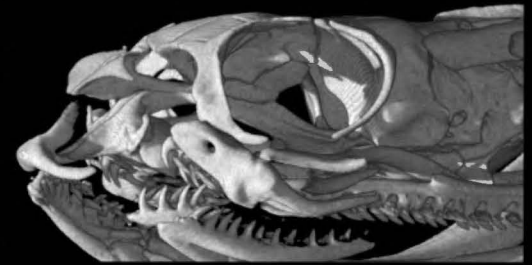
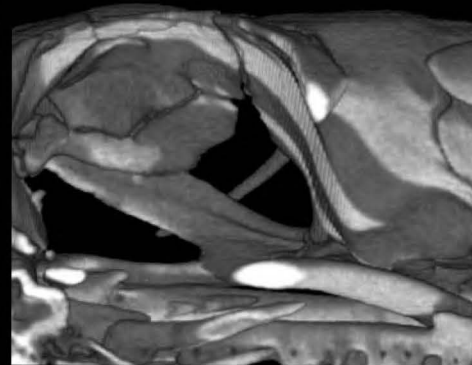
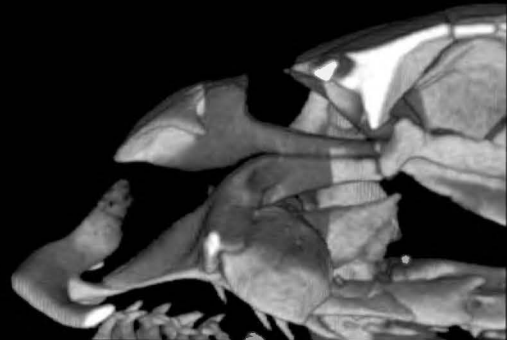
*Azemiops kharini*



*Bothrops neuwiedi*



*Causus rhombeatus*



*Vipera ursinii*

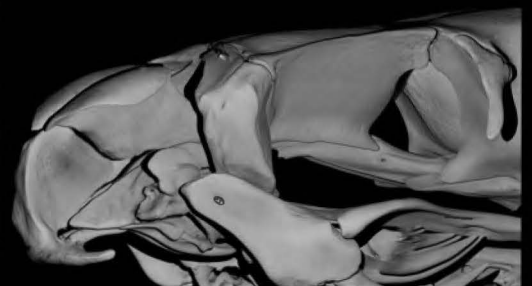
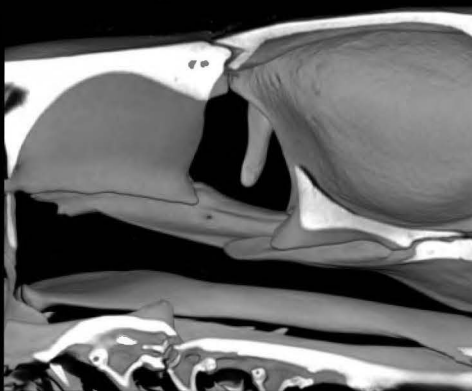
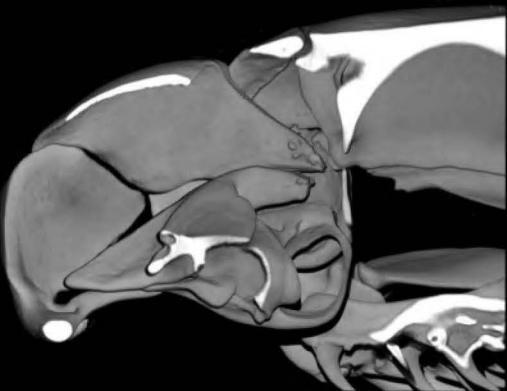


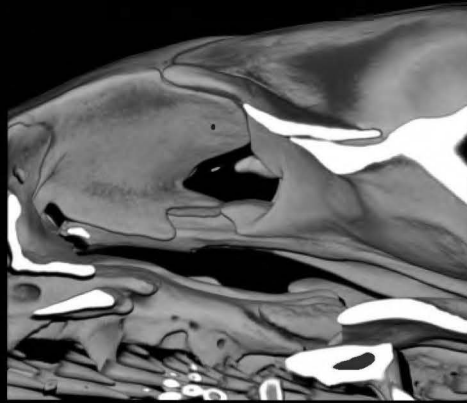
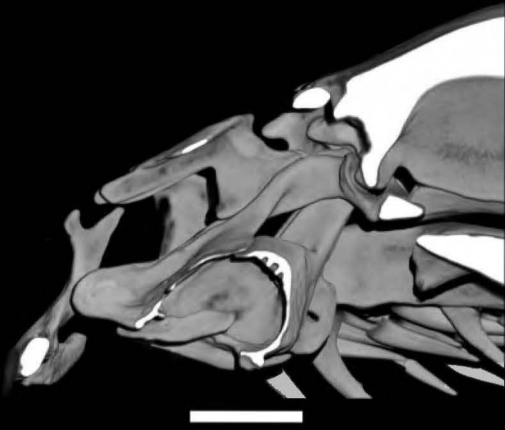
Fig. F

# Homalopsidae

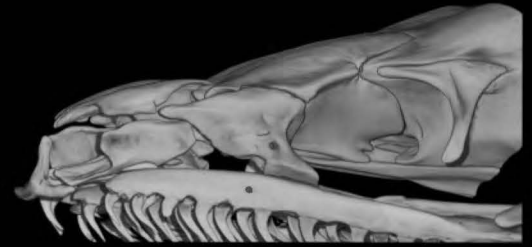
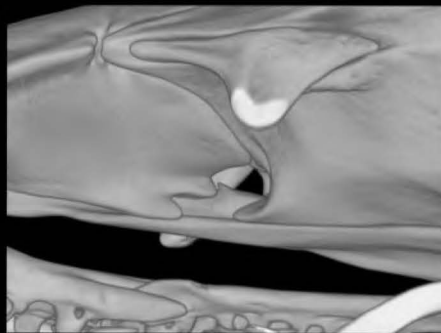
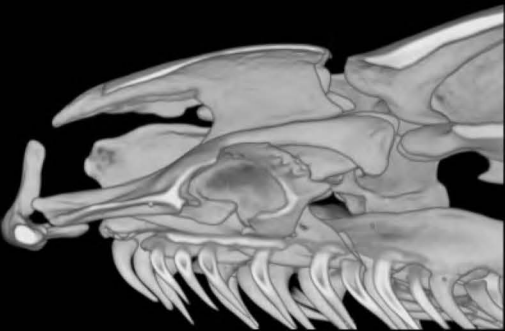
Lateral

Oblique

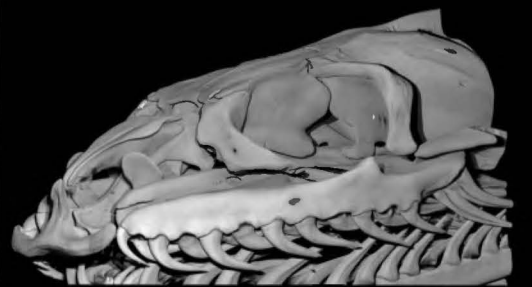
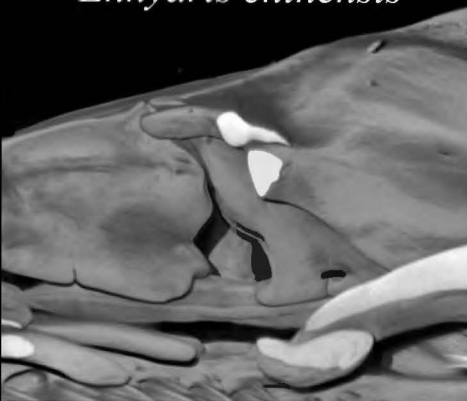
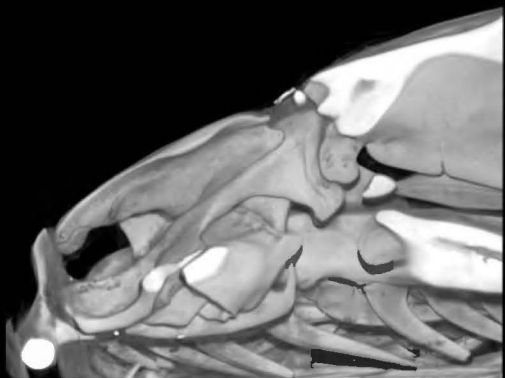
*Bitia hydroides*



*Brachyorrhos albus*



*Enhydris chinensis*



*Fordonia leucobalia*



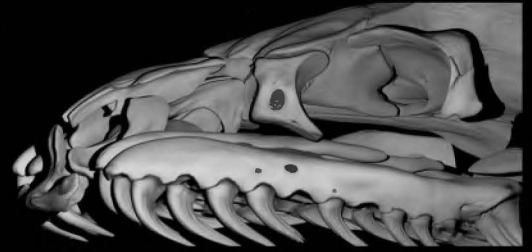
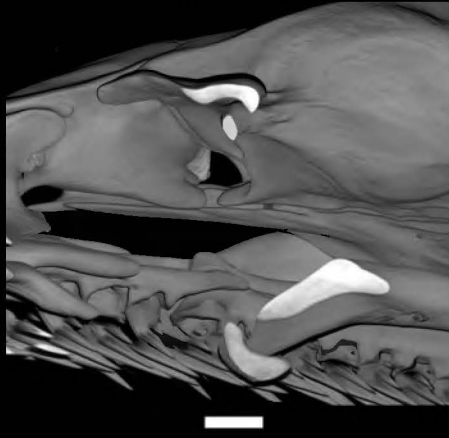
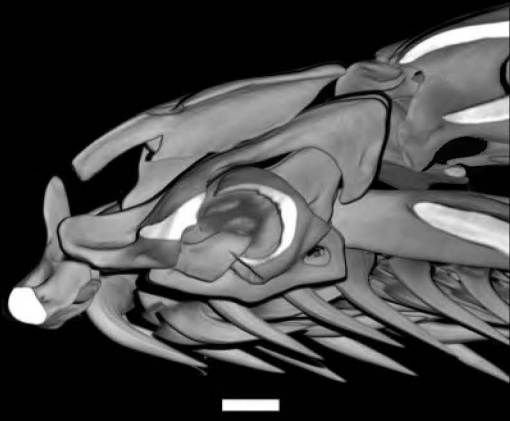
Fig. G

Homalopsidae

Lateral

Oblique

*Homalopsis buccata*



Psammophiidae

Lateral

Oblique

*Malpolon monspessulanus*



*Mimophis mahfalensis*

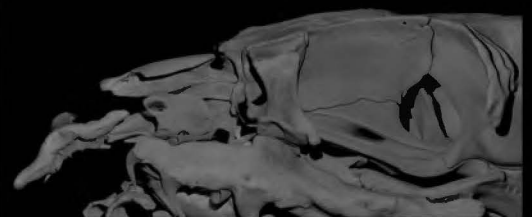
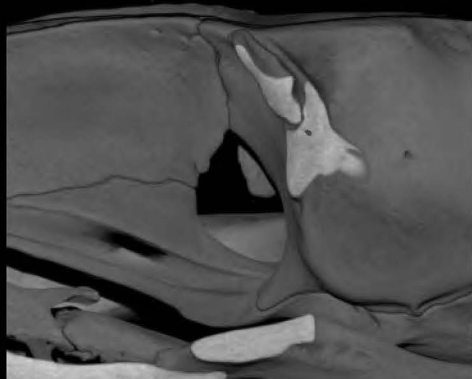
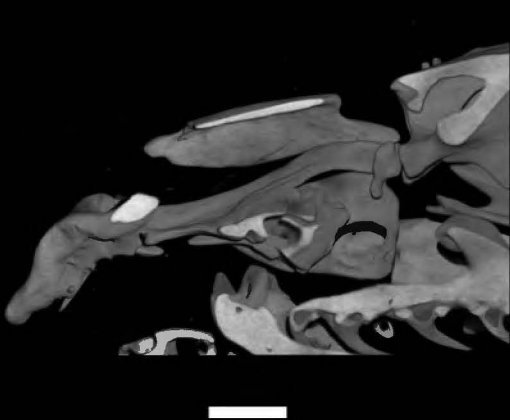


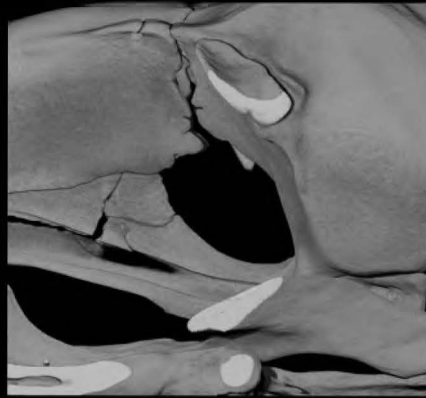
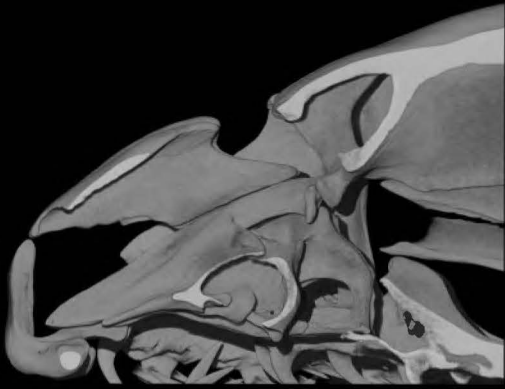
Fig. H

Psammophiidae

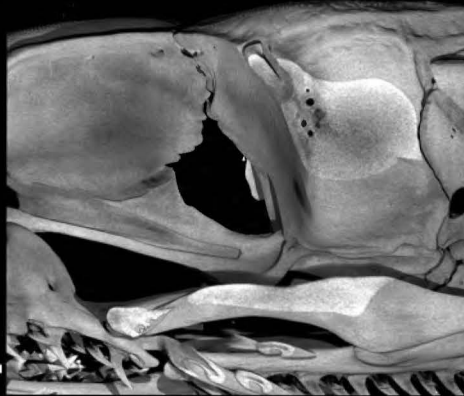
Lateral

Oblique

*Psammophylax variabilis*



*Rhamphiophis oxyrhynchus*



*Psammophis phillipsi*

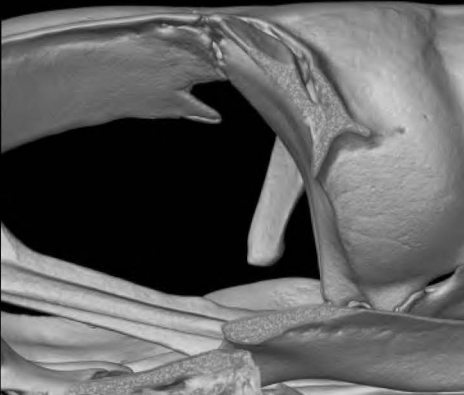
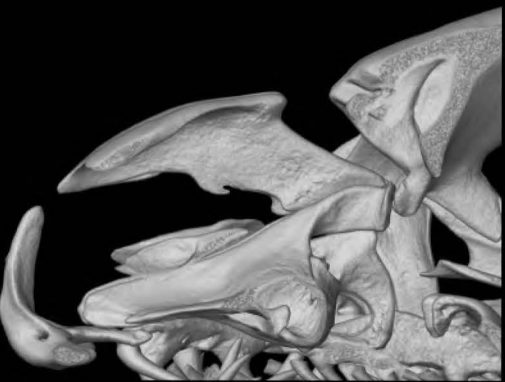




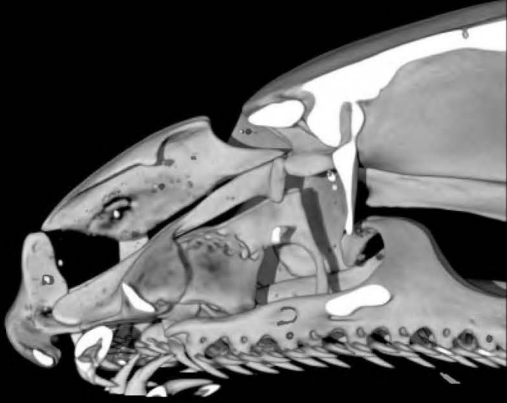
Fig. 1

Cyclocoridae

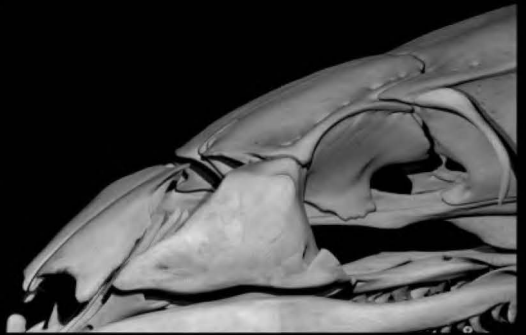
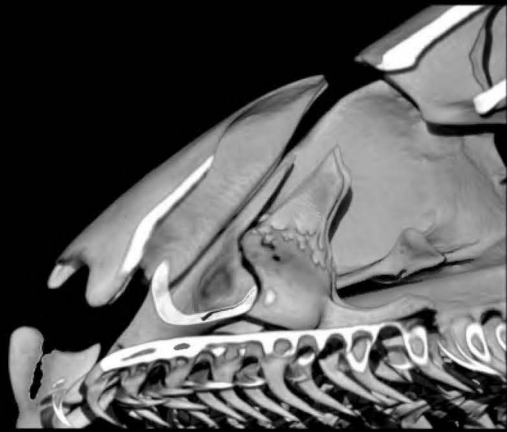
Lateral

Oblique

*Cyclocorus lineatus*



*Oxyrhabdium modestus*



Atractaspididae

Lateral

Oblique

*Aparallactus modestus*

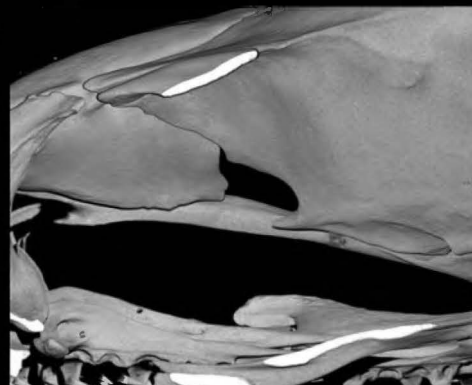




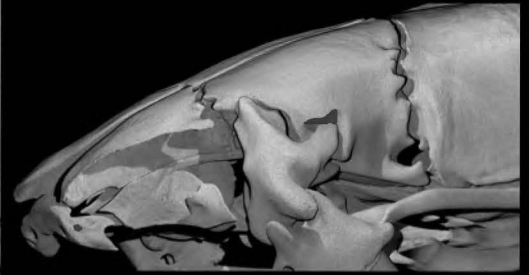
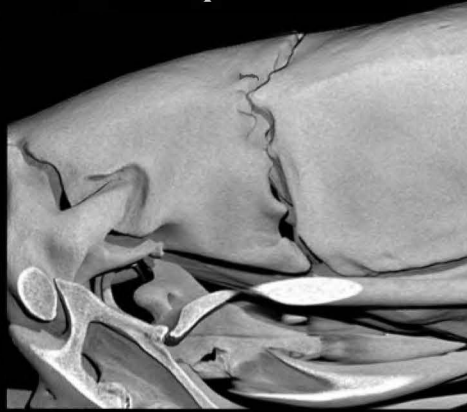
Fig. J

Atractaspididae

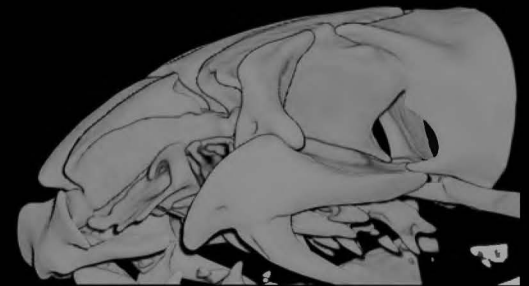
Lateral

Oblique

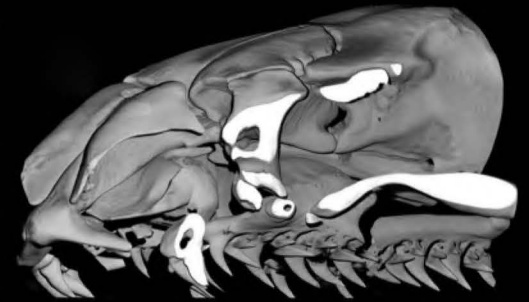
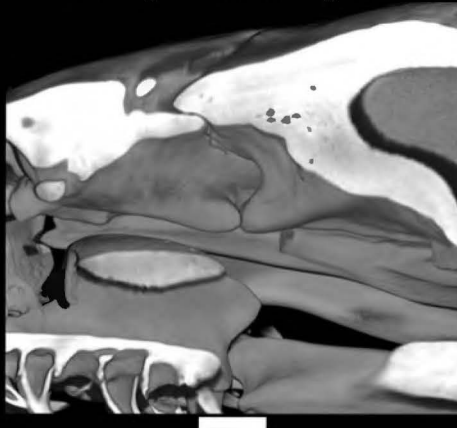
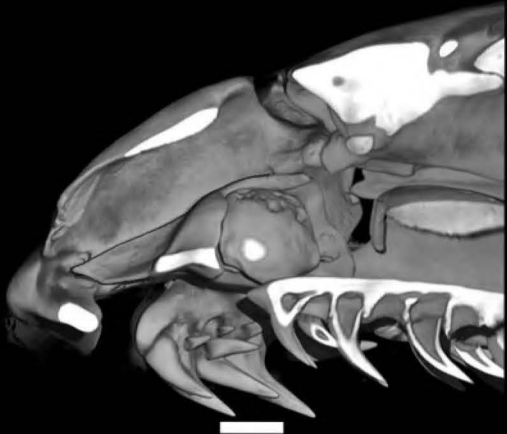
*Atractaspis bibronii*



*Homoroselaps lacteus*



*Macrelaps microlepidotus*



*Polemon christyi*

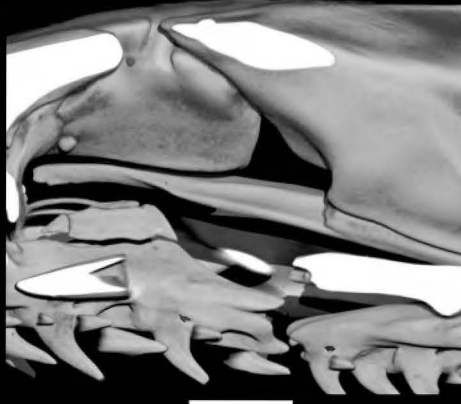
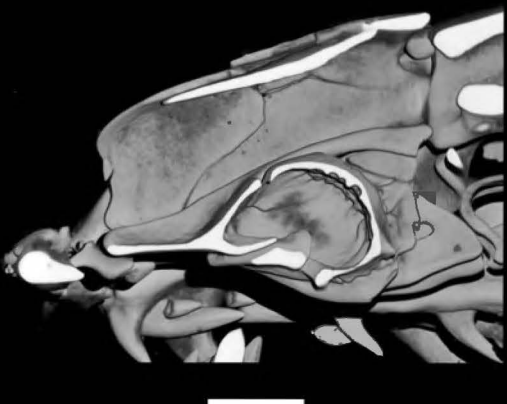


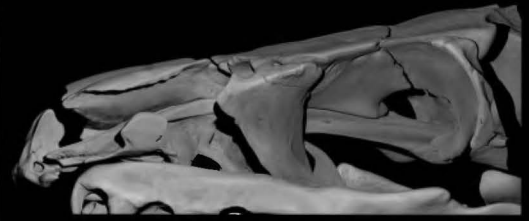
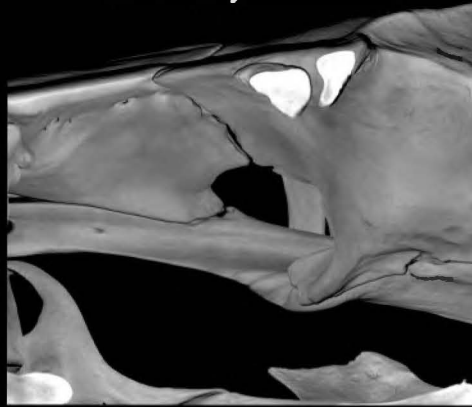
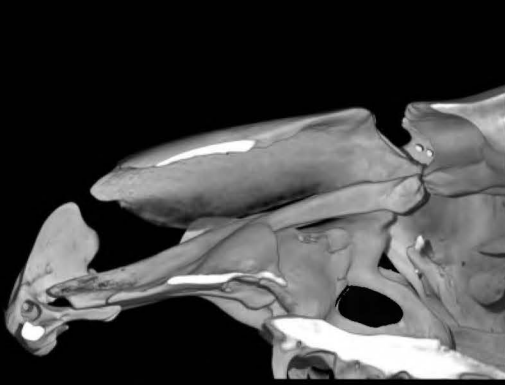
Fig. K

Lamprophiidae

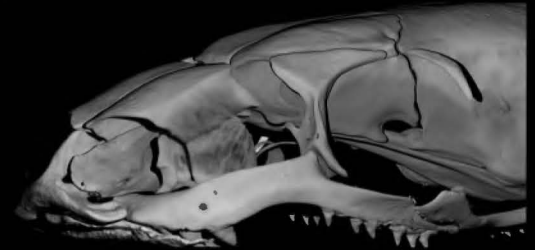
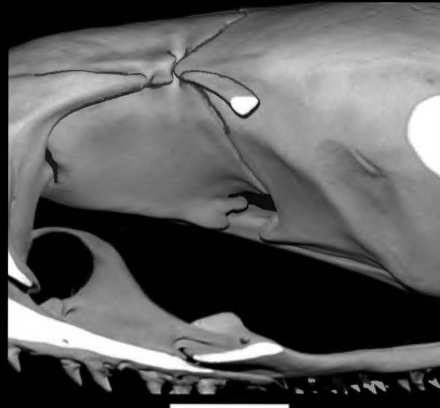
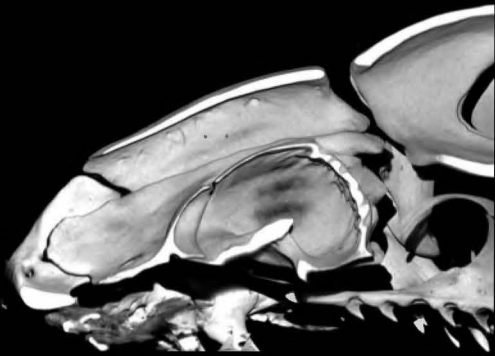
Lateral

Oblique

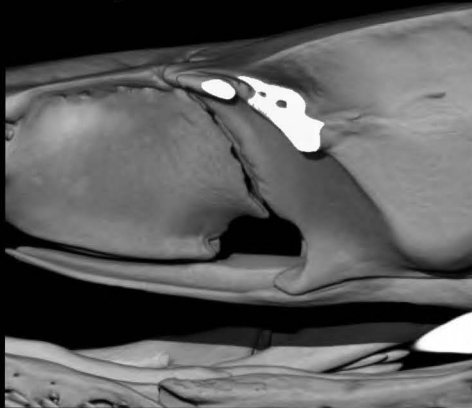
*Bothrolycus ater*



*Chamaelycus fasciatus*



*Dipsadoboa weileri*



*Lamprophis olivaceus*

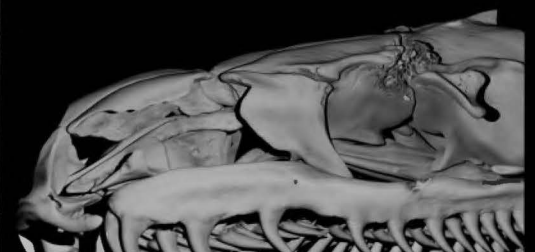


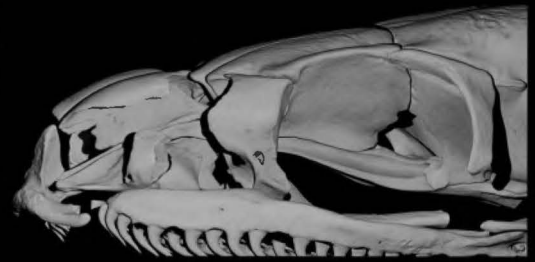
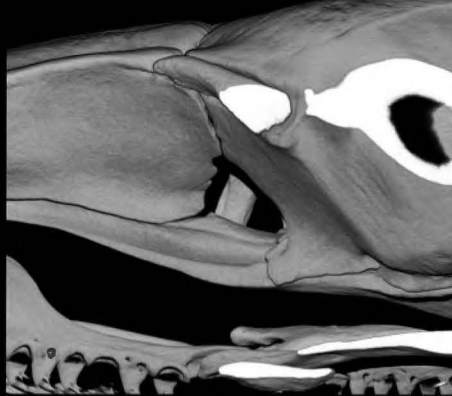
Fig. L

Lamprophiidae

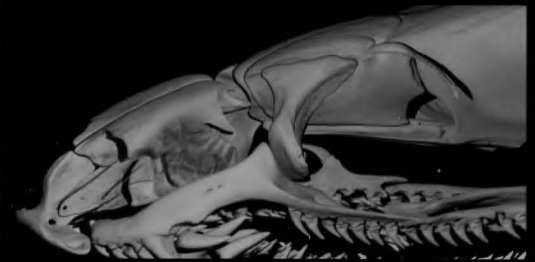
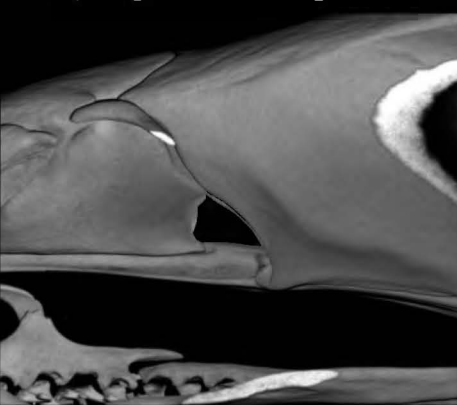
Lateral

Oblique

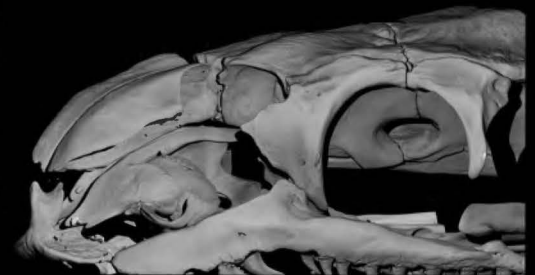
*Lycodonomorphus rufulus*



*Lycophidion capense*



*Gonionotophis capensis*



*Pseudoboodon lemniscatus*

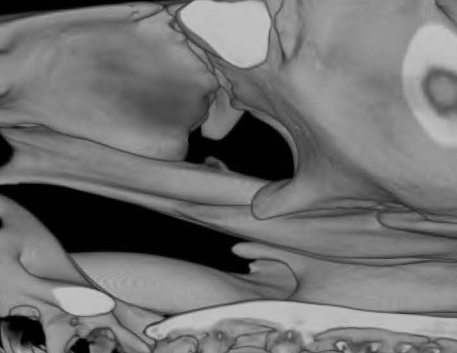
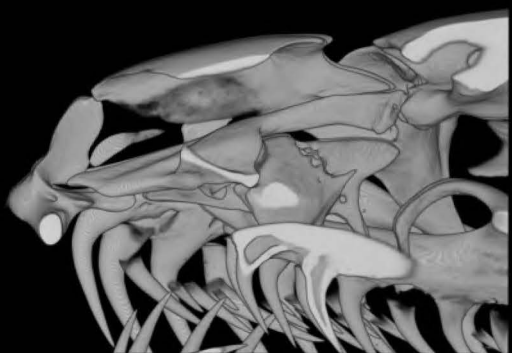


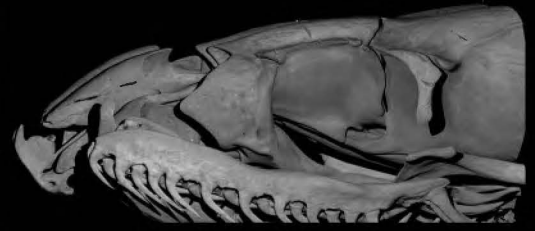
Fig. M

Pseudoxyrhopiidae

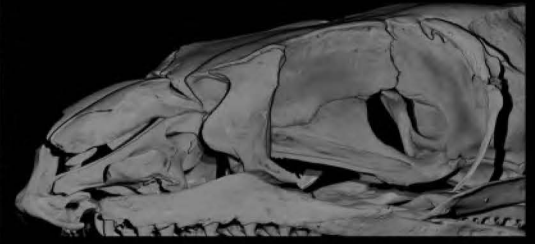
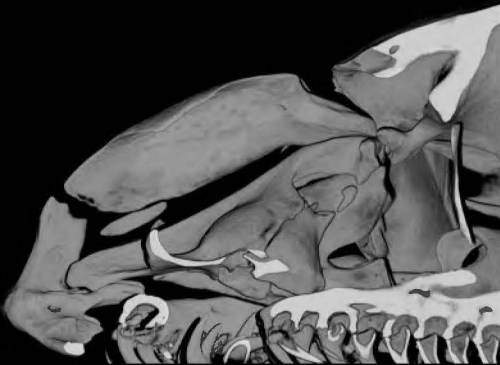
Lateral

Oblique

*Alluaudina bellyi*



*Dromicodryas quadrilineatus*



*Duberria lutrix*



*Heteroliodon occipitalis*



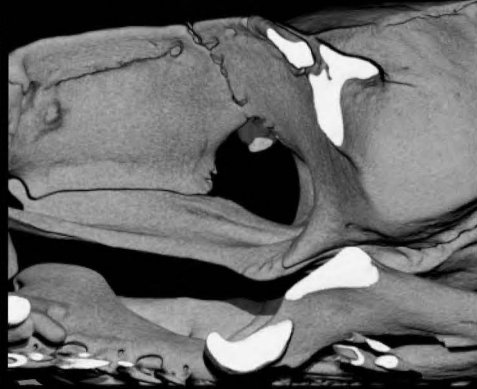


Pseudoxyrhopiidae

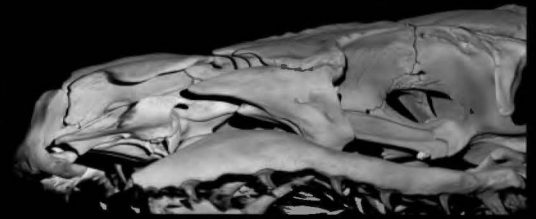
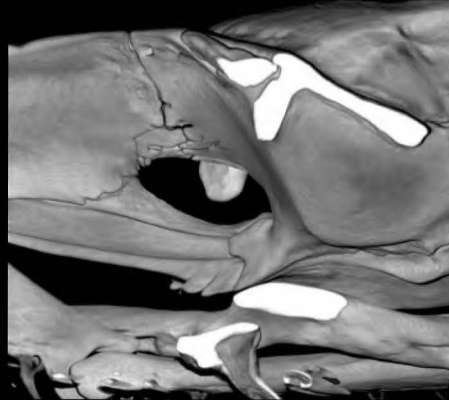
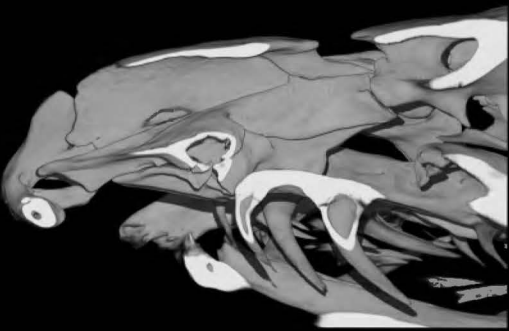
Lateral

Oblique

*Ithycyphus miniatus*



*Langaha madagascariensis*



*Liophidium torquatum*



*Pseudoxyrhopus tritaeniatus*

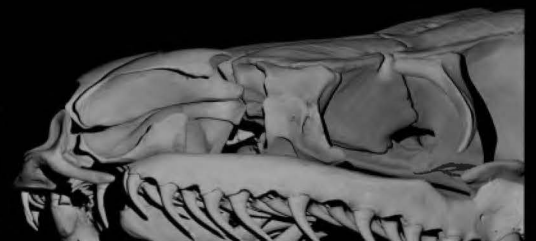
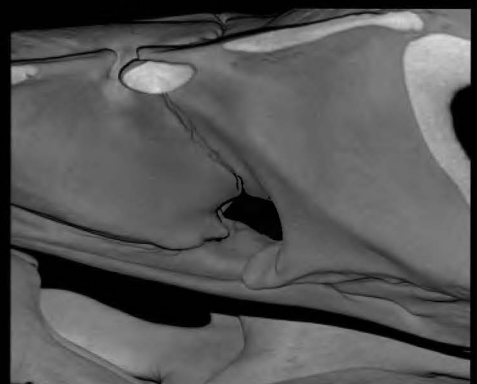
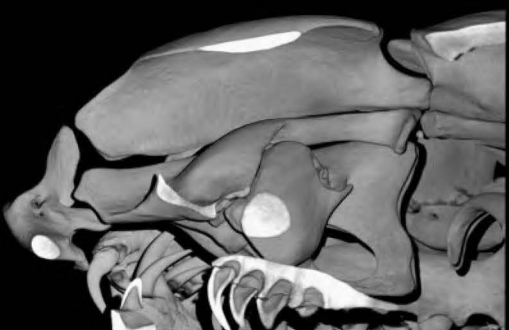


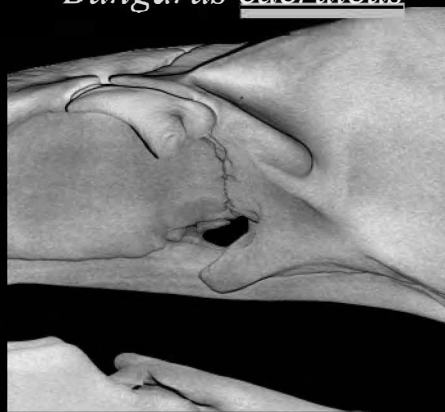
Fig. 0

Elapidae

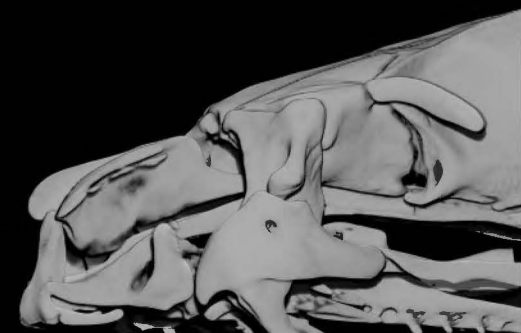
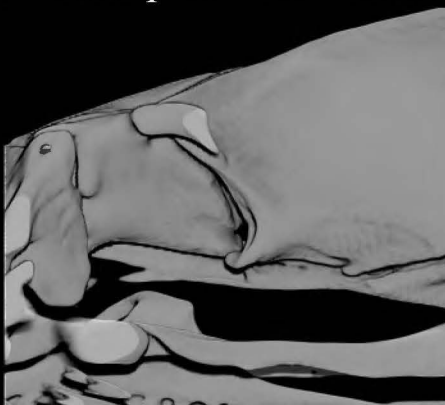
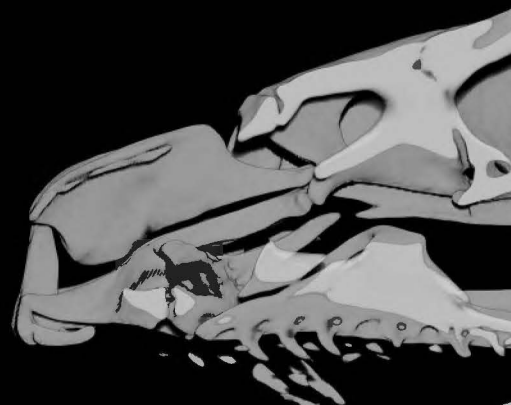
Lateral

Oblique

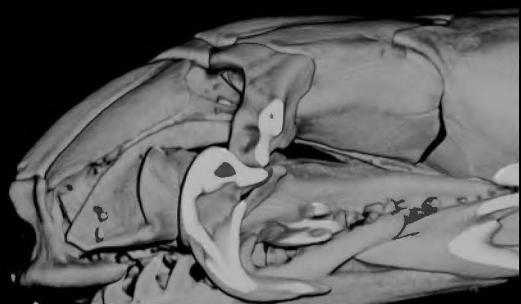
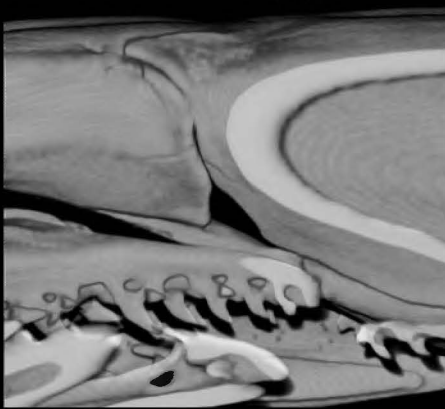
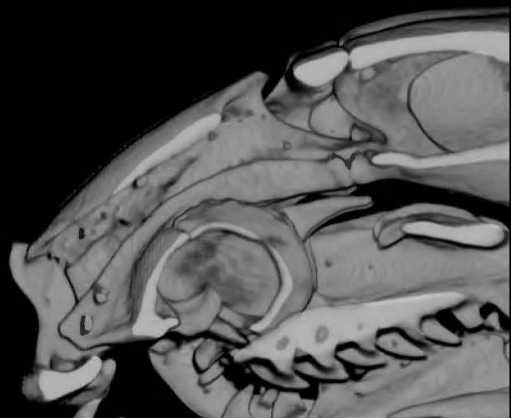
*Bungarus caeruleus*



*Calliophis intestinalis*



*Micrurus narduccii*



*Naja naja*

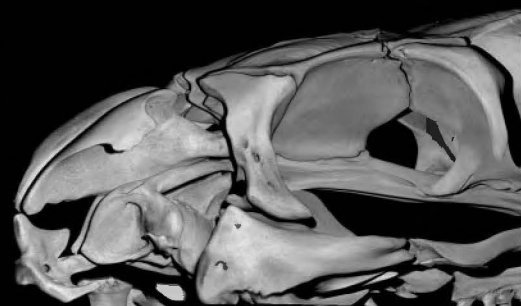
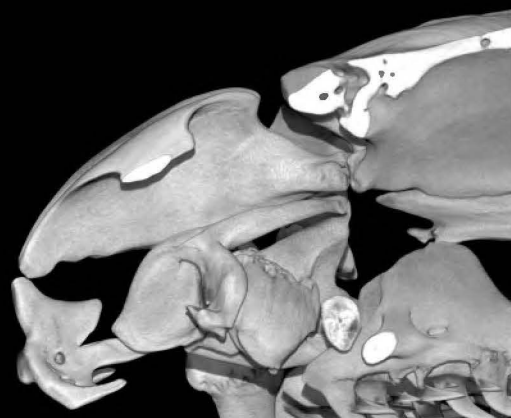




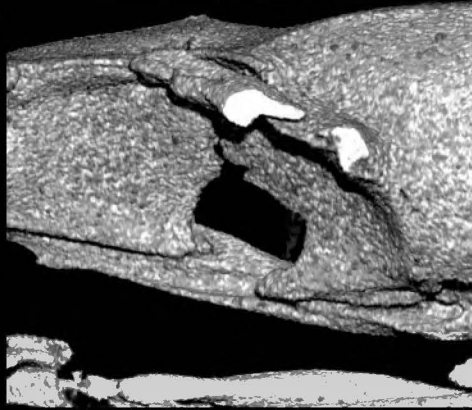
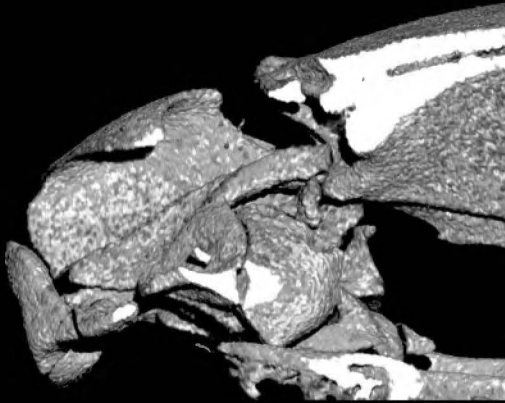
Fig. P

Elapidae

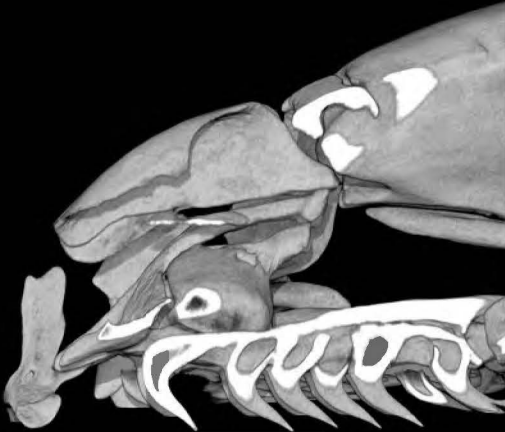
Lateral

Oblique

*Notechis scutatus*



*Toxicocalamus loriae*



Pseudoxenodontidae

Lateral

Oblique

*Pseudoxenodon stricticaudatus*

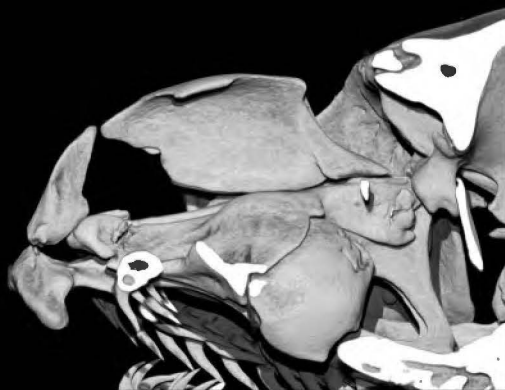


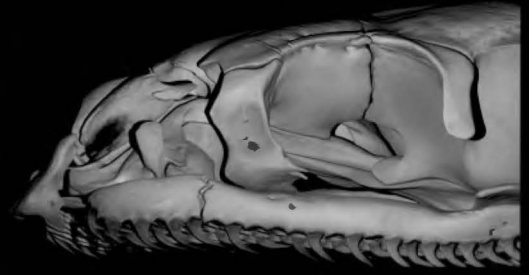
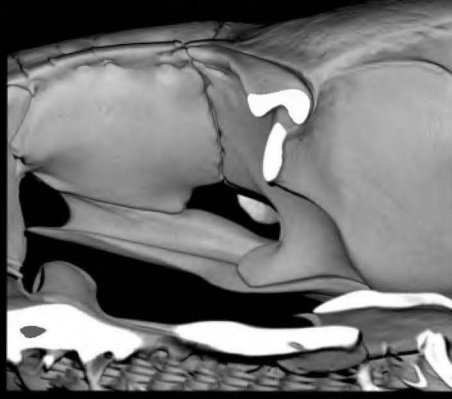
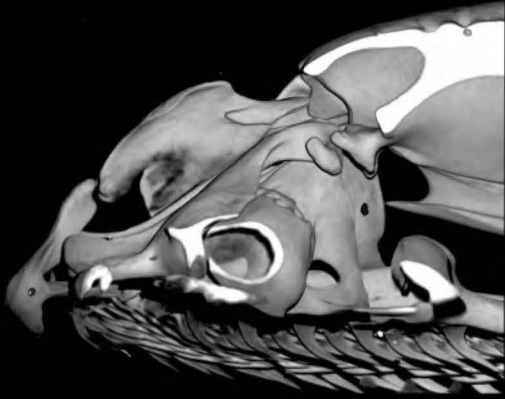
Fig. Q

Natricidae

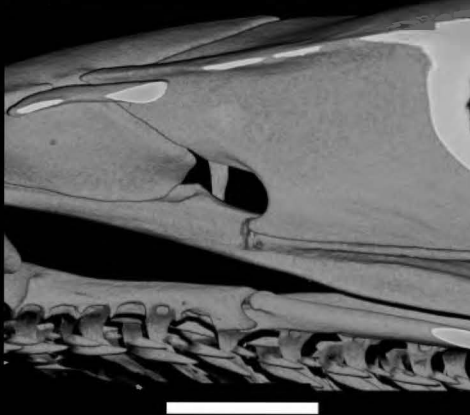
Lateral

Oblique

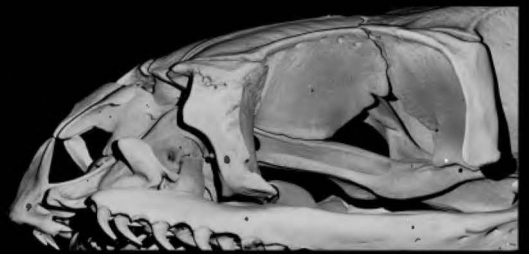
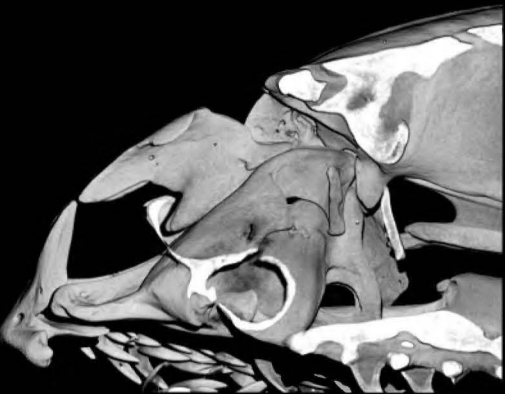
*Afronatrix anoscopa*



*Aspidura trachyprocta*



*Atretium schistosum*



*Lycognathophis seychellensis*

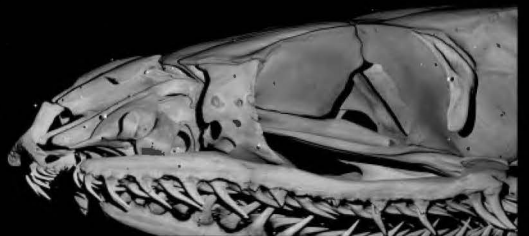
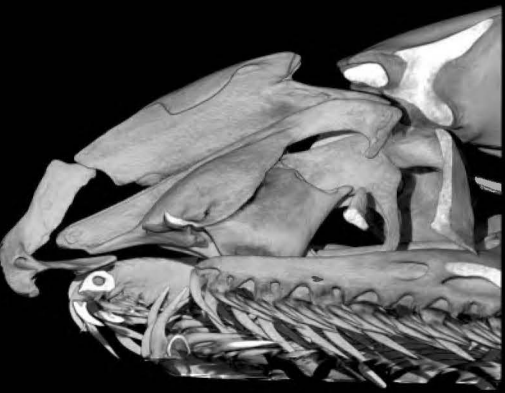


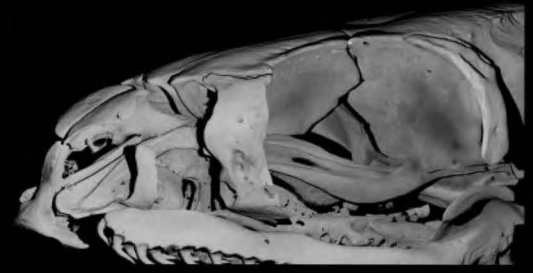
Fig. R

Natricidae

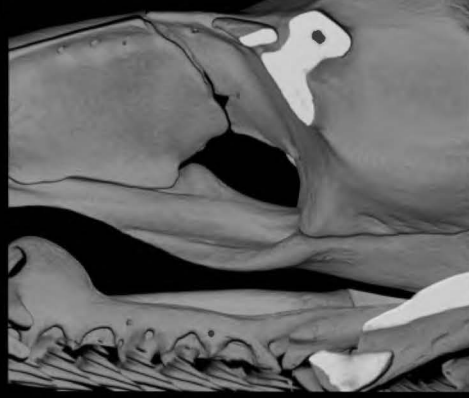
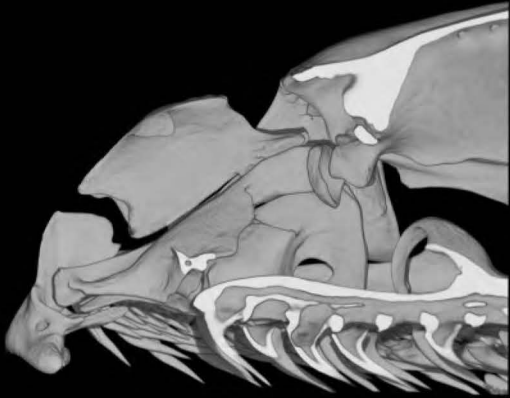
Lateral

Oblique

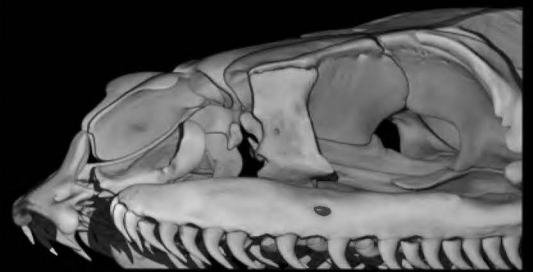
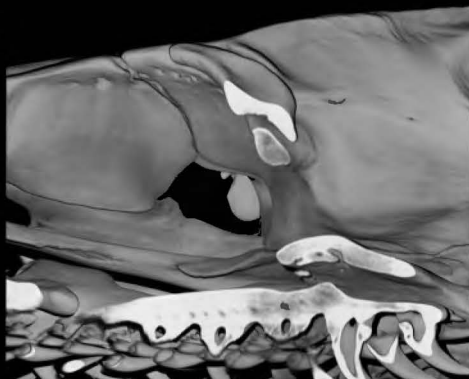
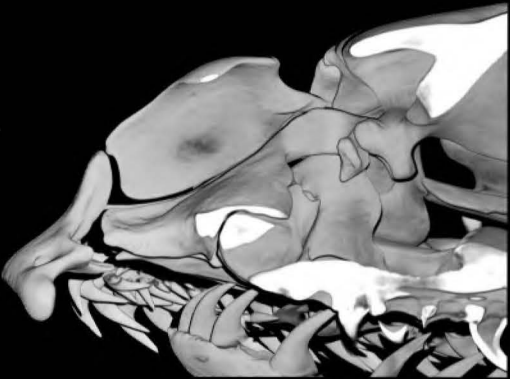
*Natriciteres fuliginoides*



*Natrix maura*



*Sinonatrix annularis*



*Xenochrophis cerogaster*

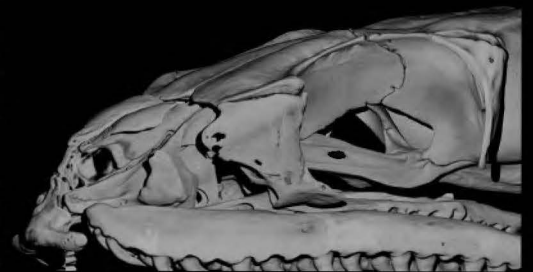


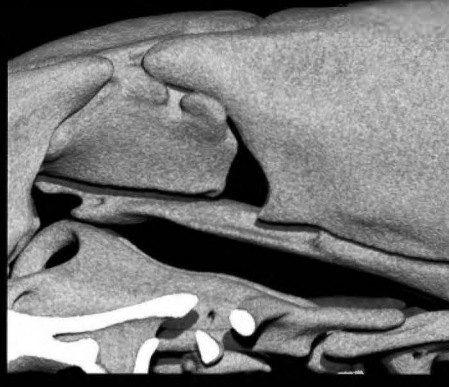
Fig. S

Dipsadidae

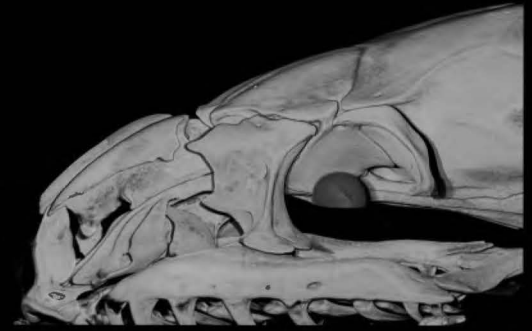
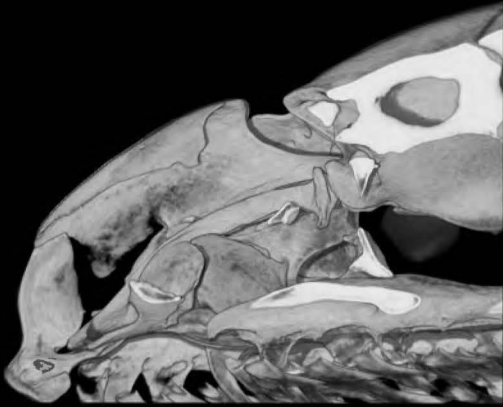
Lateral

Oblique

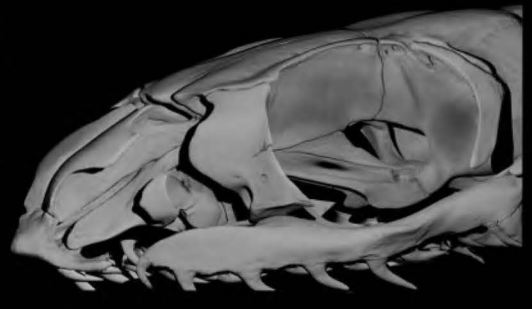
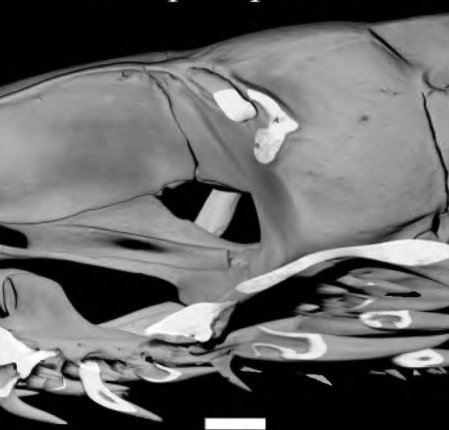
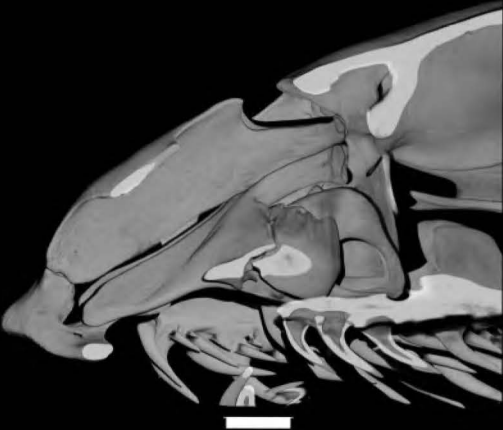
*Apostolepis cf. nelsonjorgei*



*Atractus maculatus*



*Conophis pulcher*



*Contia tenuis*

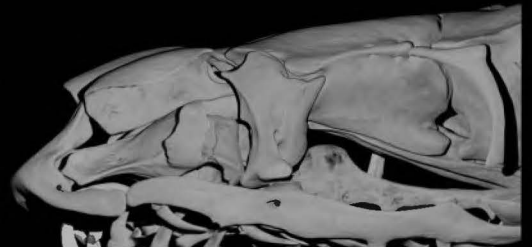
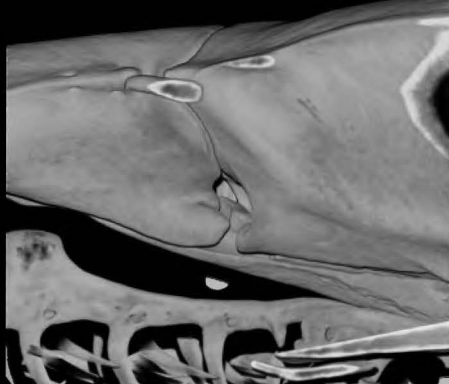




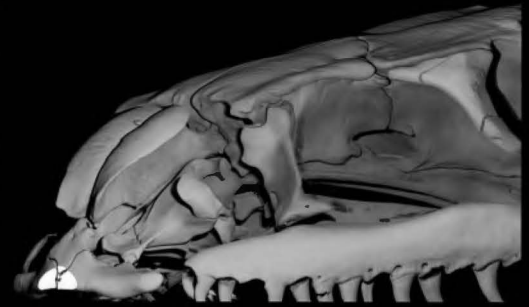
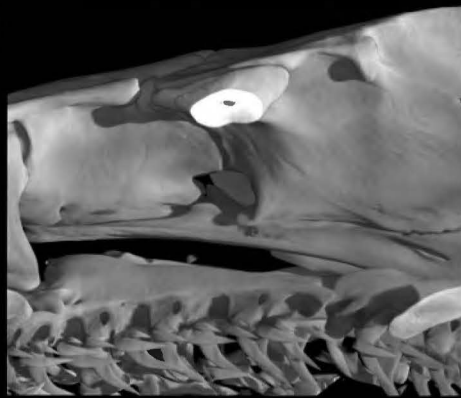
Fig. T

Dipsadidae

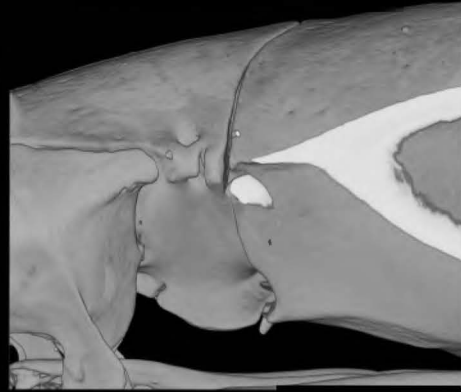
Lateral

Oblique

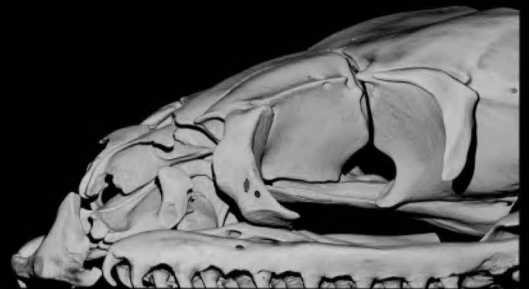
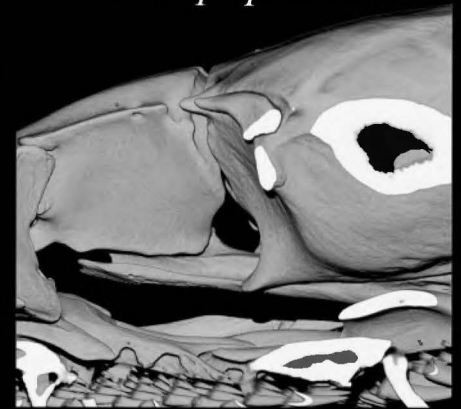
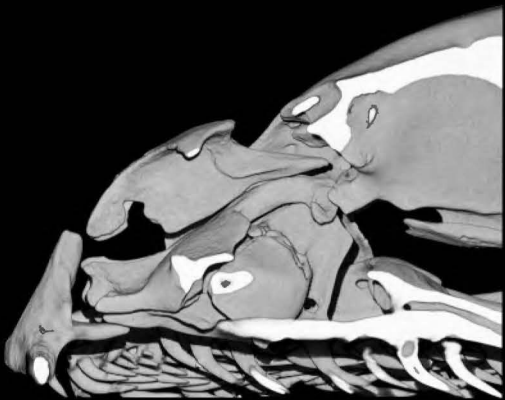
*Farancia abacura*



*Geophis hoffmanni*



*Helicops pastazae*



*Heterodon nasicus*

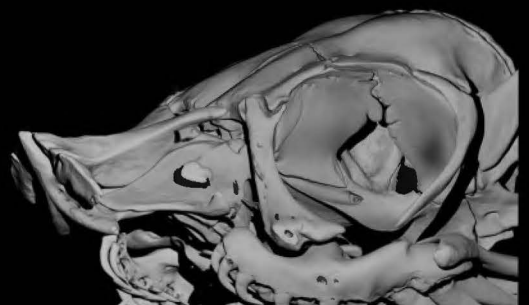
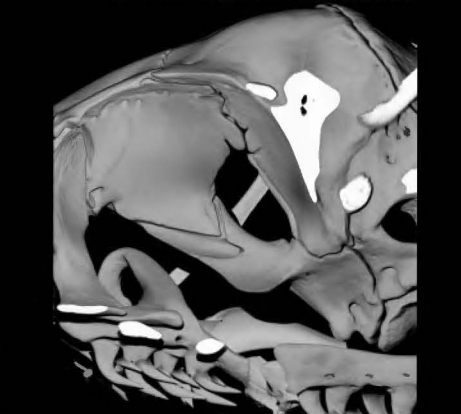


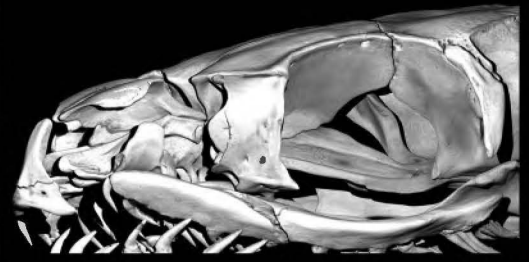
Fig. U

Dipsadidae

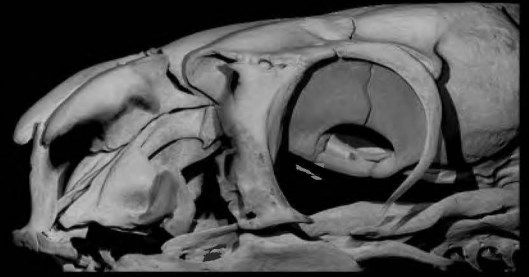
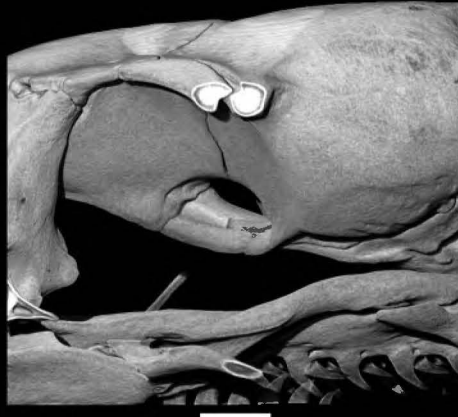
Lateral

Oblique

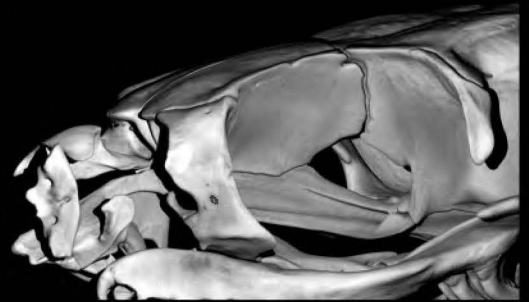
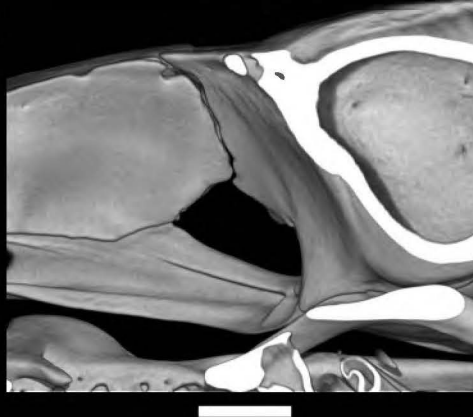
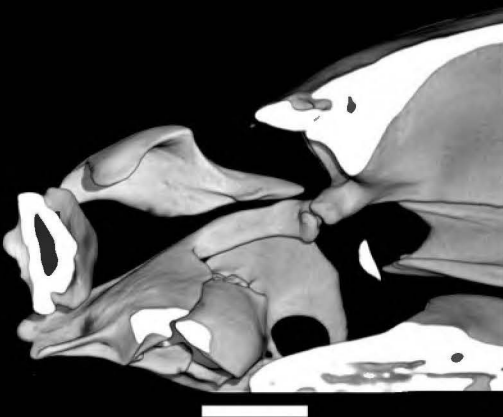
*Philodryas mattogrossensis*



*Sibon sartorii*



*Tachymenis peruviana*



*Urotheca multilineata*





Fig. V

Dipsadidae

Lateral

Oblique

*Xenopholis scalaris*



Sibynophiidae

Lateral

Oblique

*Scaphiodontophis annulatus*



*Sibynophis subpunctatus*



Fig. W

Sibynophiidae

Lateral

Oblique

*Colubroelaps nguyenvansangi*

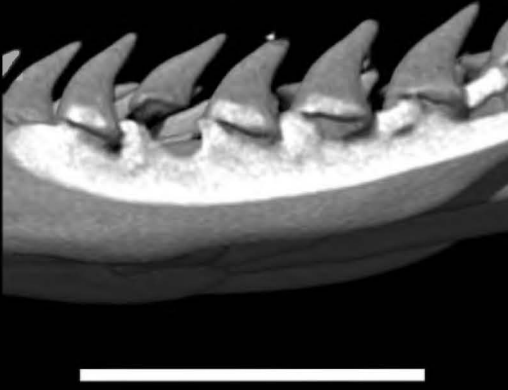


Fig. X

Calamariidae

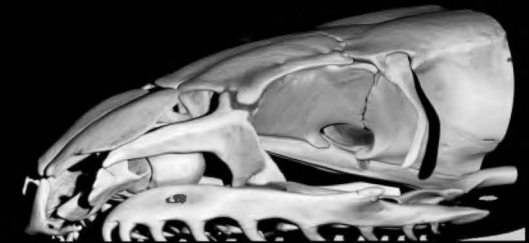
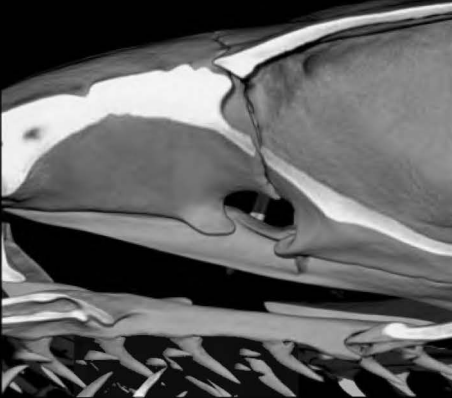
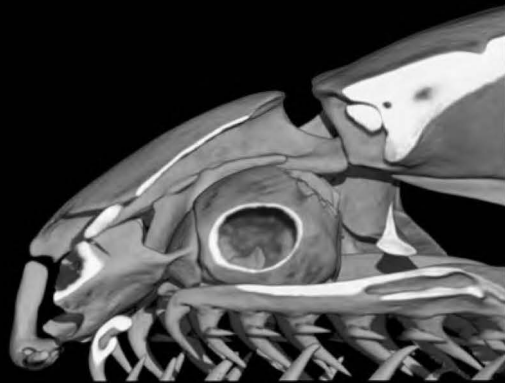
Lateral

Oblique

*Calamaria gervaisi*



*Macrocalamus lateralis*



*Oreocalamus hanitschi*

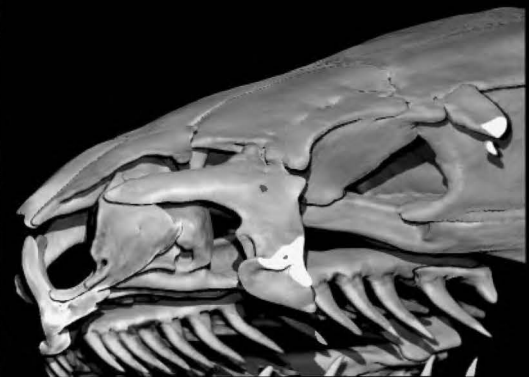
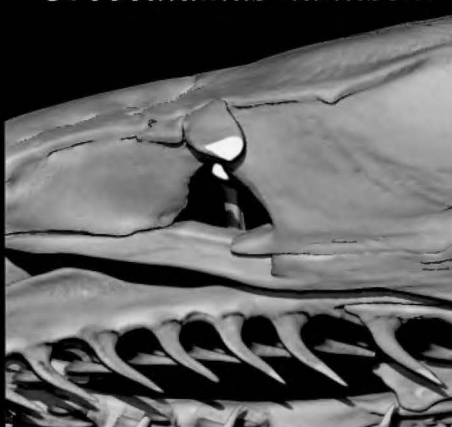


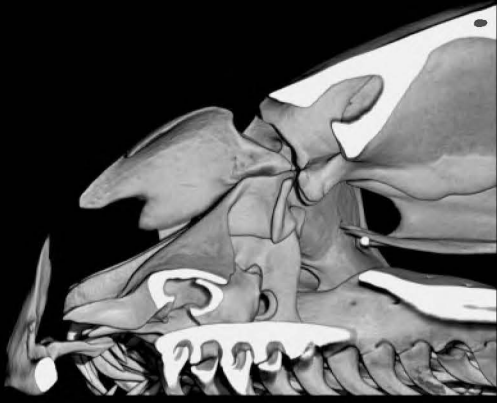
Fig. Y

Grayiidae

Lateral

Oblique

*Grayia smithii*

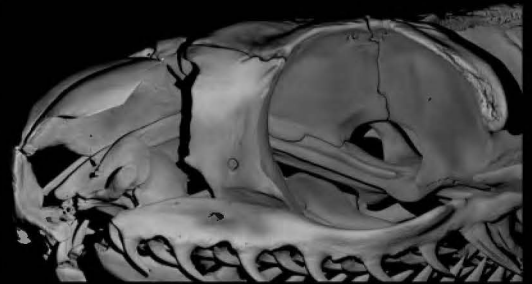
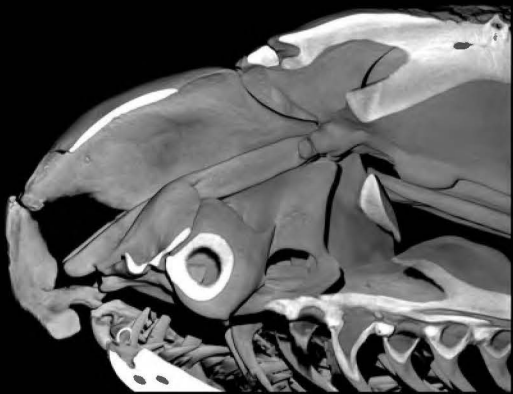


Colubridae

Lateral

Oblique

*Boiga dendrophila*



*Coluber constrictor*

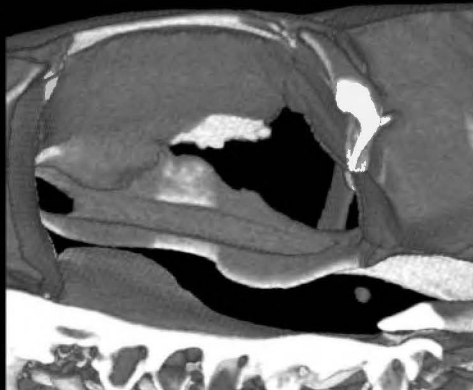


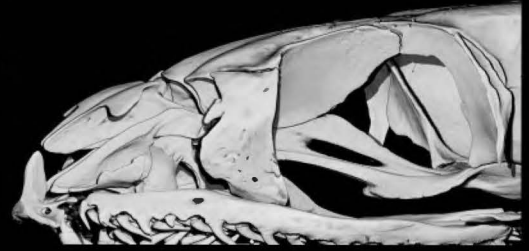
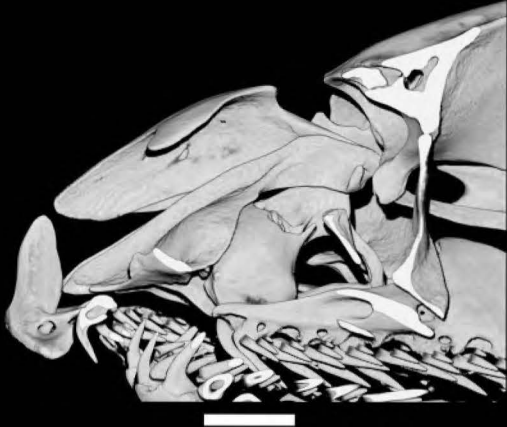
Fig. Z

Colubridae

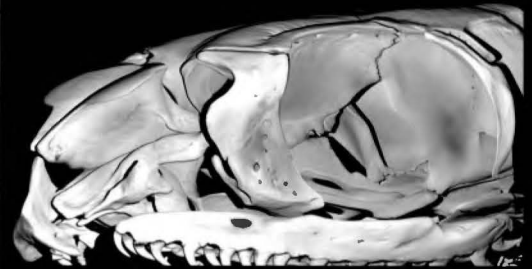
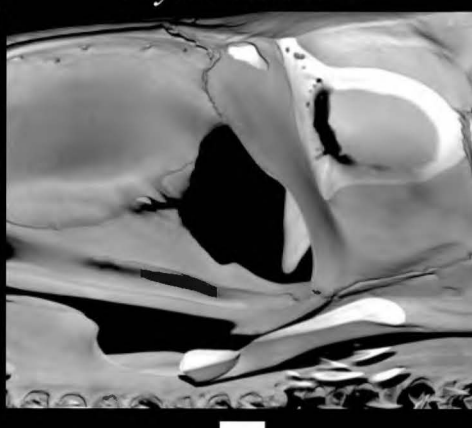
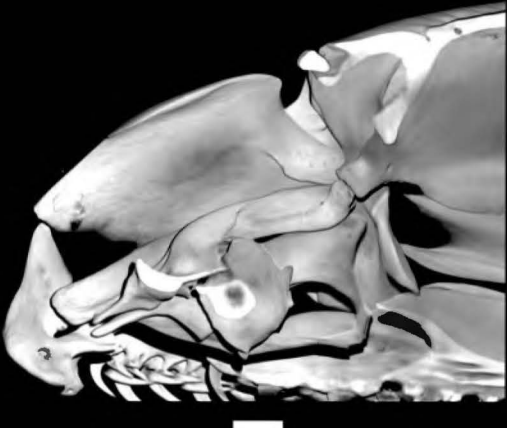
Lateral

Oblique

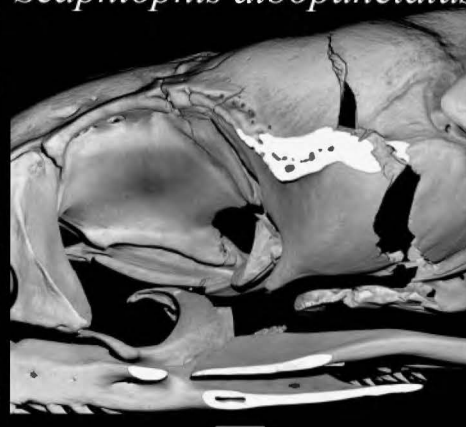
*Dendrelaphis papuensis*



*Ptyas mucosus*



*Scaphiophis albopunctatus*



*Senticolis triaspis*

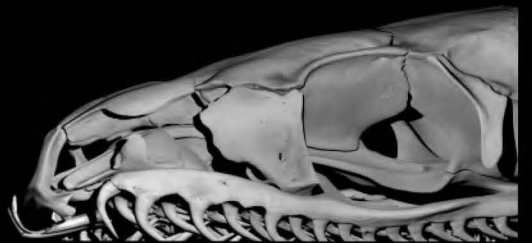


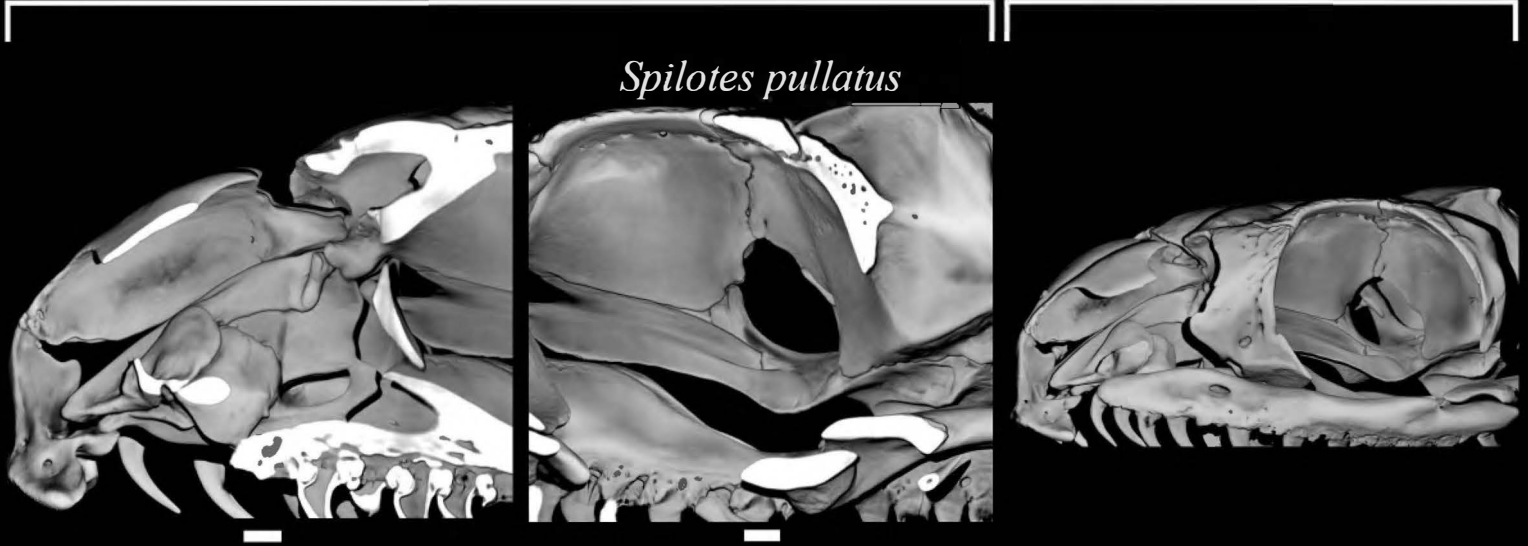


Fig. AA

Colubridae

Lateral

Oblique



Colubridae *incertae sedis*

Lateral

Oblique

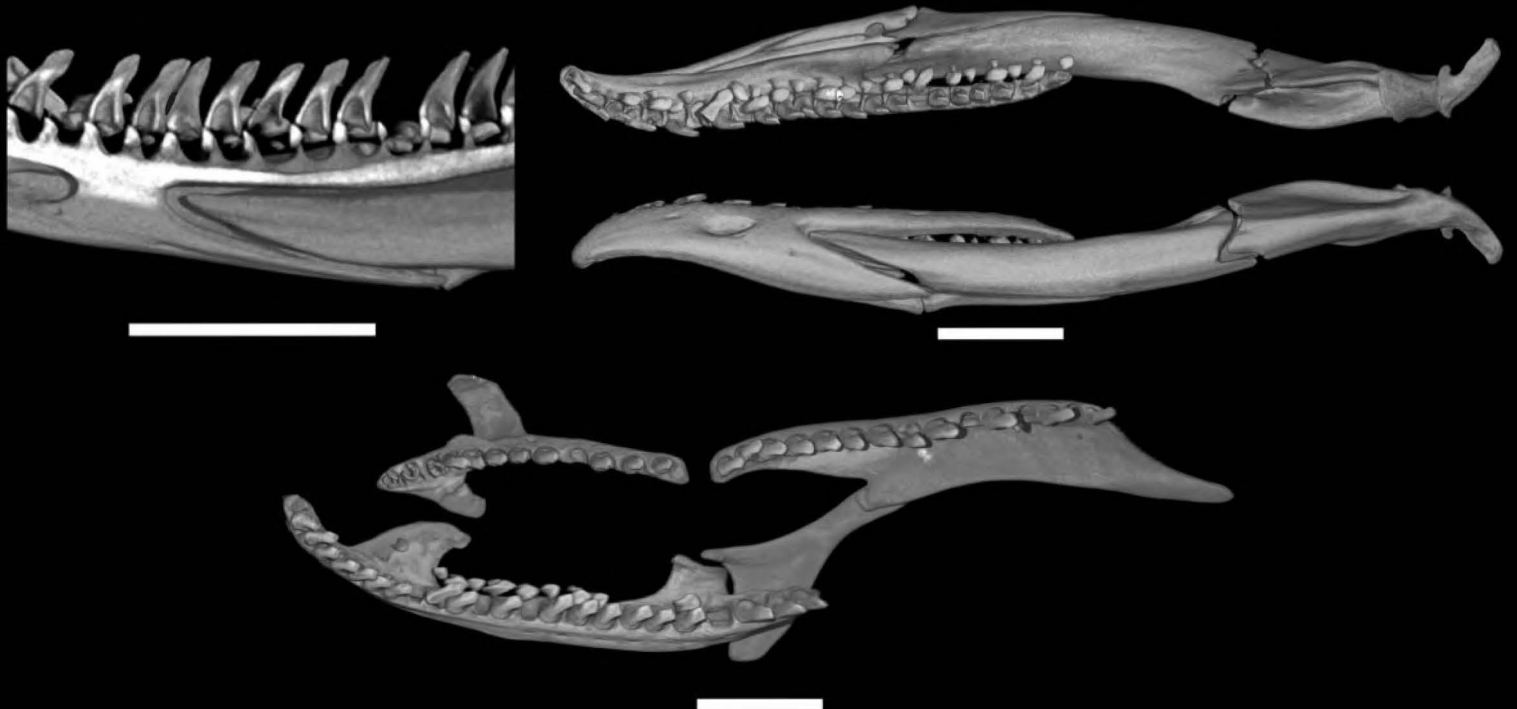
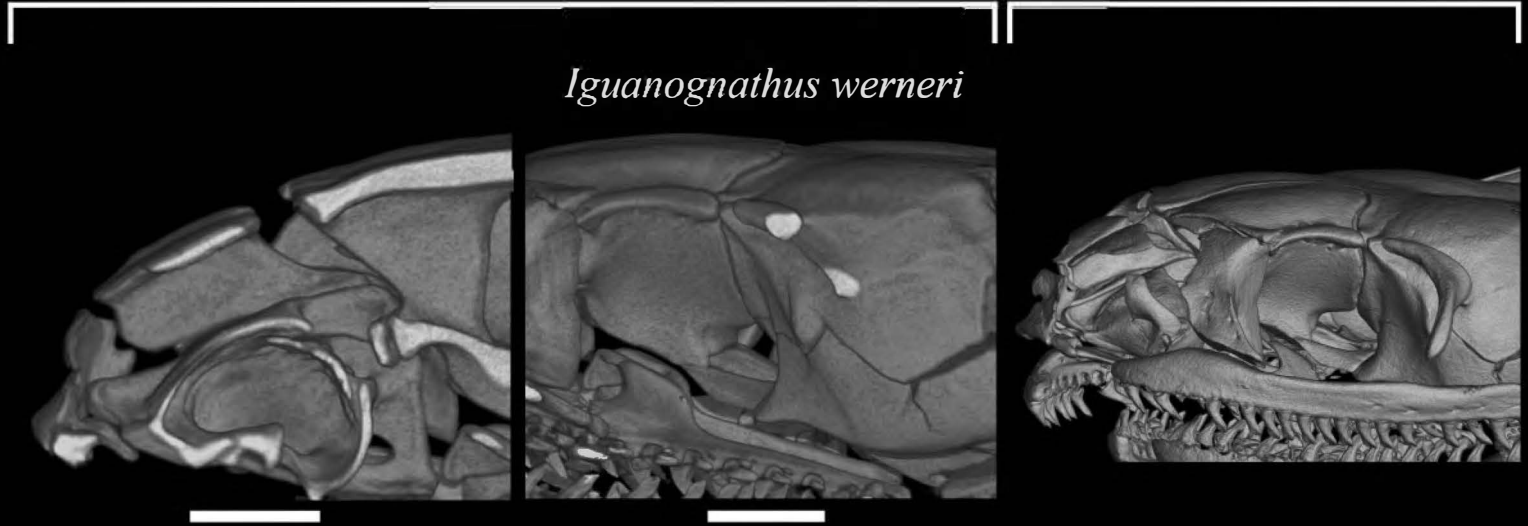




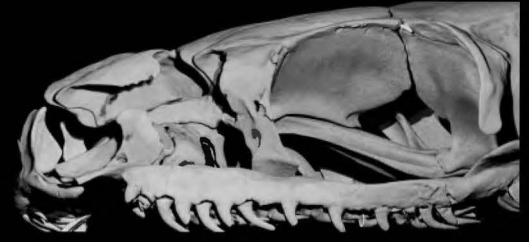
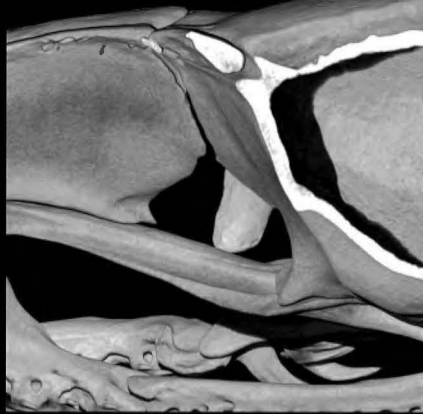
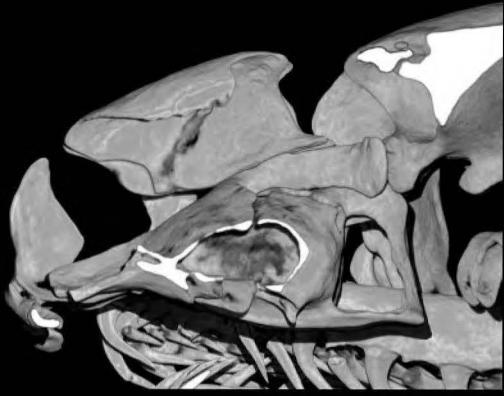
Fig. AB

*Elapoidea incertae sedis*

Lateral

Oblique

*Buroma depressiceps*



*Micrelaps muelleri*

