

S2 Appendix

Fig. A

Acrochordidae

Xenodermidae

Pareidae

Acrochordus javanicus

Achalinus rufescens

Fimbrios klossi

Pareas sp.

Anterior

Posterior

Lateral

Dorsal

Ventral

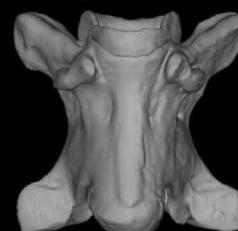
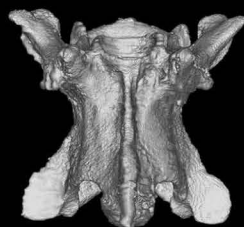
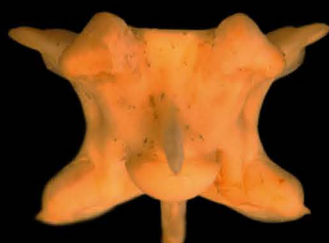
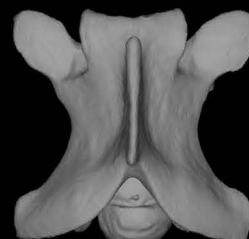
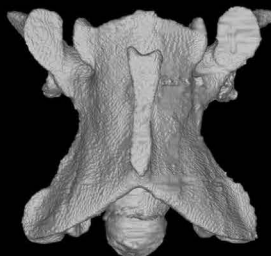
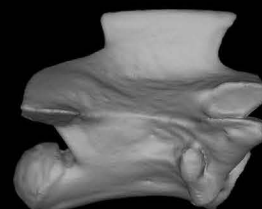
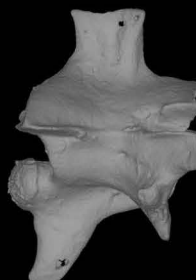
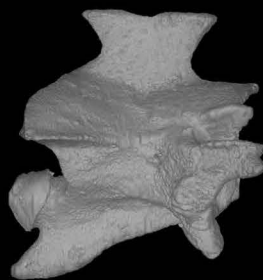
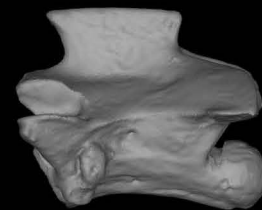
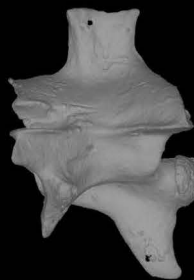
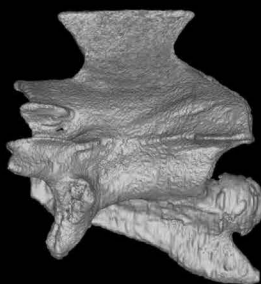
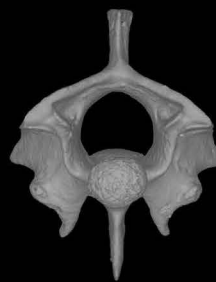
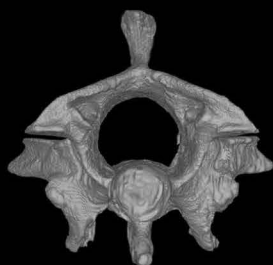
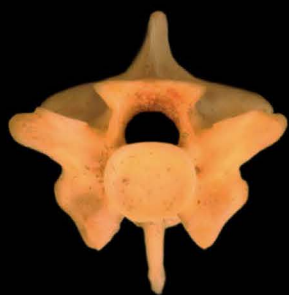


Fig. B

Viperidae

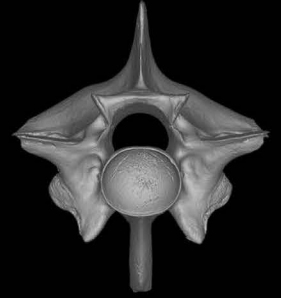
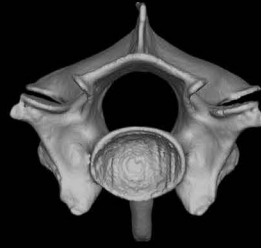
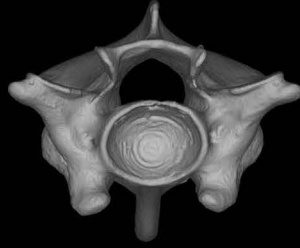
Causus defilippi

Vipera ursinii

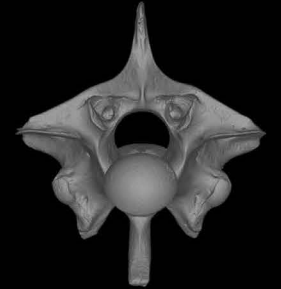
Azemiops feae

Bothrops jararaca

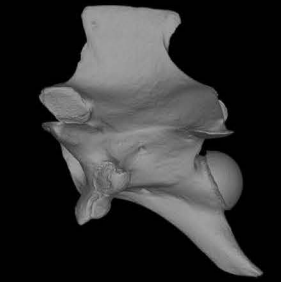
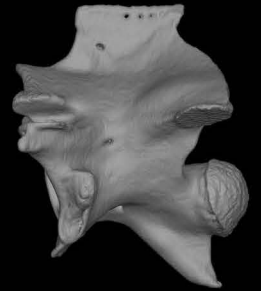
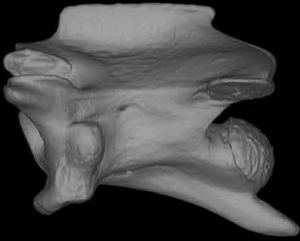
Anterior



Posterior



Lateral



Dorsal



Ventral



Fig. C

Homalopsidae

Psammophiidae

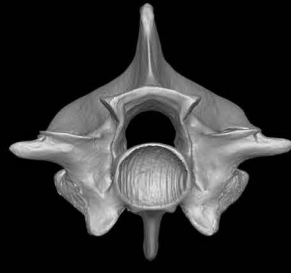
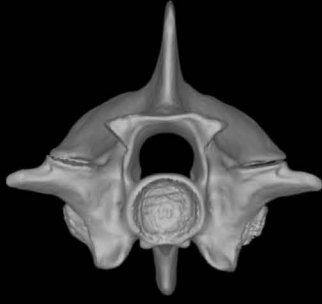
Cerberus rynchops

Homalopsis buccata

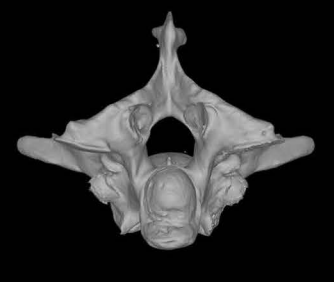
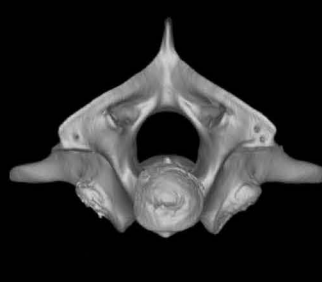
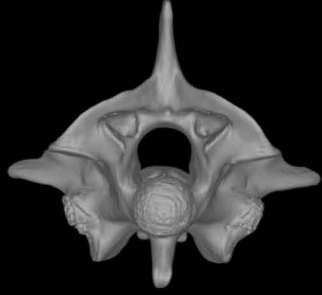
Psammophis lineolatus

Mimophis mahfalensis

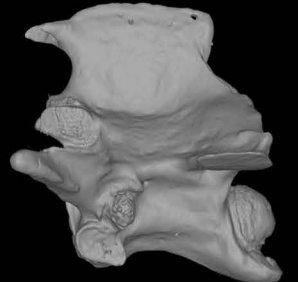
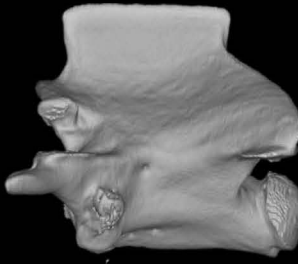
Anterior



Posterior



Lateral



Dorsal



Ventral

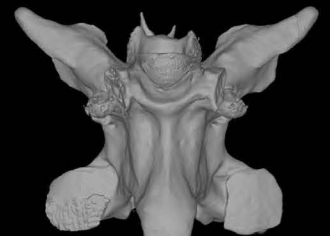
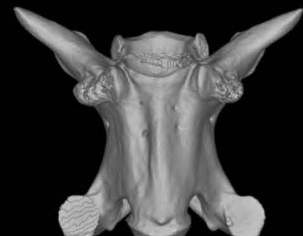


Fig. D

Pseudoxyrhopiidae

Lamprophiidae

Madagascarophis colubrinus

Ditypophis vivax

Boaedon fuliginosus

Crotaphopeltis hotamboeia

Anterior

Posterior

Lateral

Dorsal

Ventral

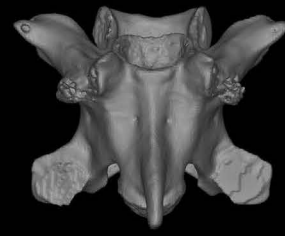
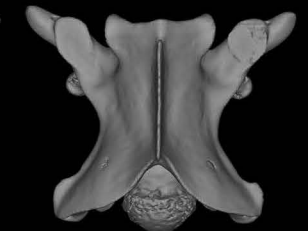
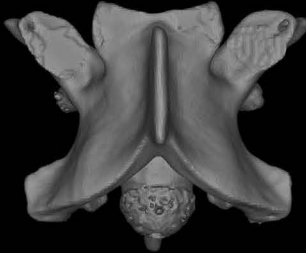
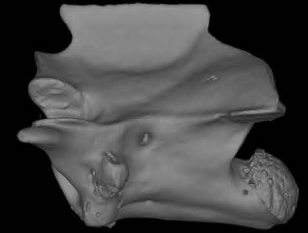
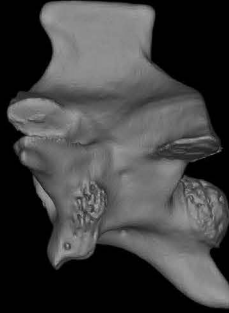
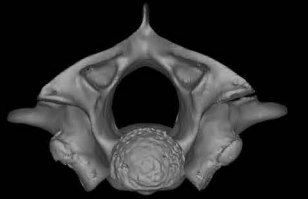
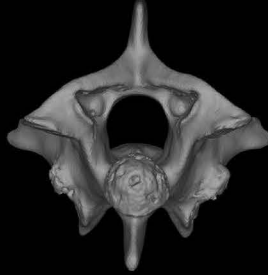
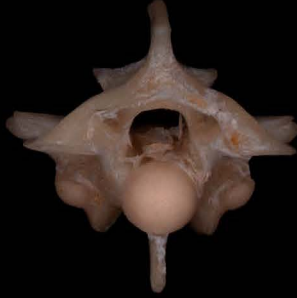
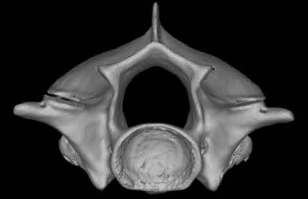


Fig. E

Atractaspididae

Elapidae

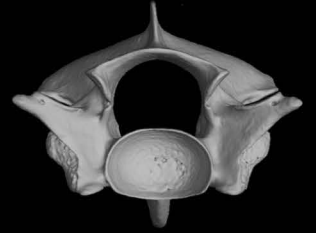
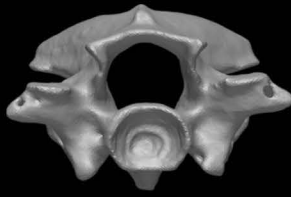
Atractaspis irregularis

Homoroselaps lacteus

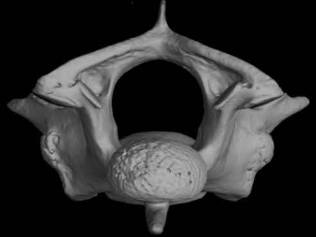
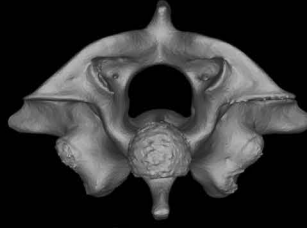
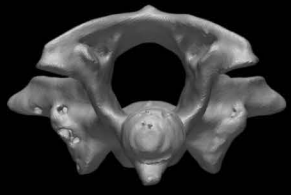
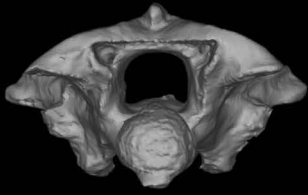
Sinomicrurus maclellandi

Naja naja

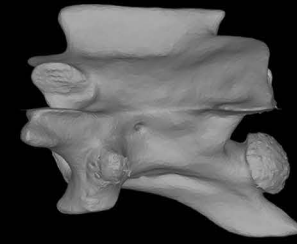
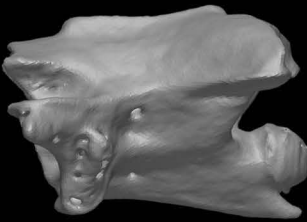
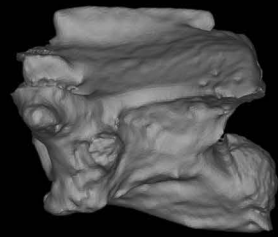
Anterior



Posterior



Lateral



Dorsal



Ventral

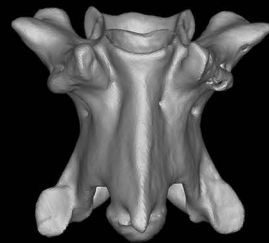
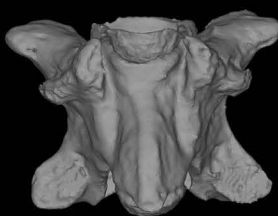


Fig. F

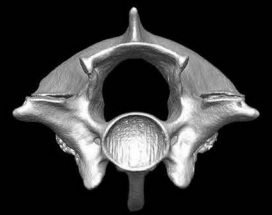
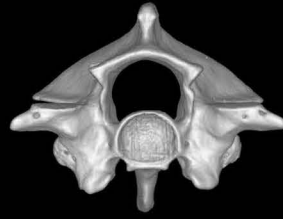
Elapidae

Cycloporidae

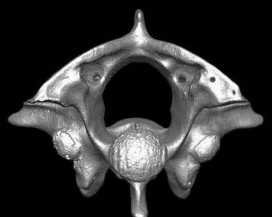
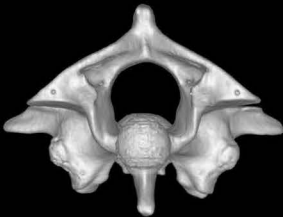
Natricidae

*Micrurus corallinus**Cycloporus lineatus**Natrix natrix**Natriciteres olivacea*

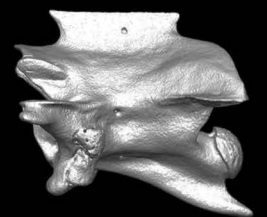
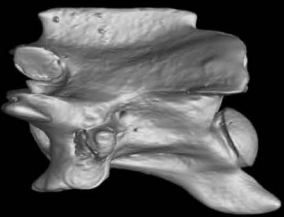
Anterior



Posterior



Lateral



Dorsal



Ventral



Fig. G

Sibynophiidae

Grayiidae

Calamariidae

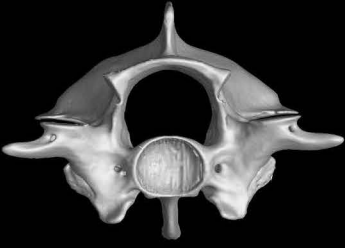
Scaphiodontophis annulatus

Grayia smithii

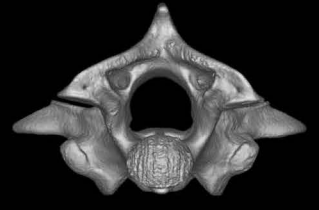
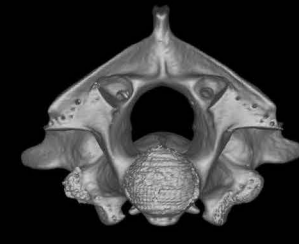
Grayia tholloni

Oreocalamus hanitschi

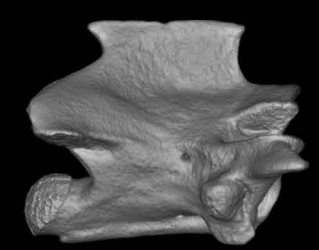
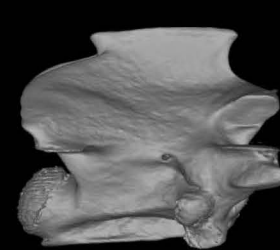
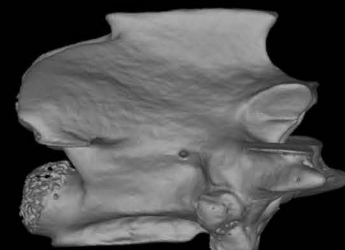
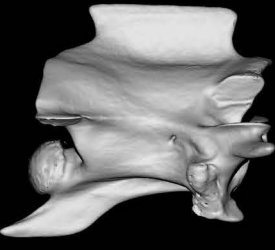
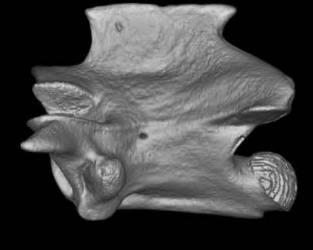
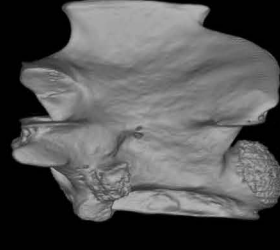
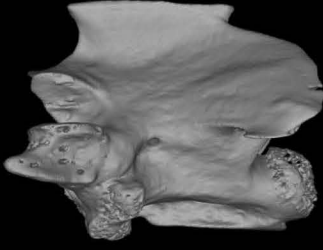
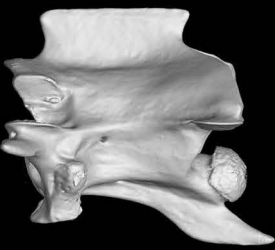
Anterior



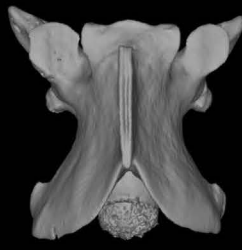
Posterior



Lateral



Dorsal



Ventral

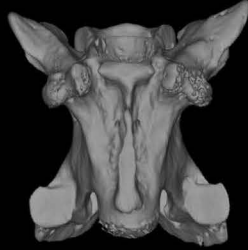


Fig. H

Colubridae

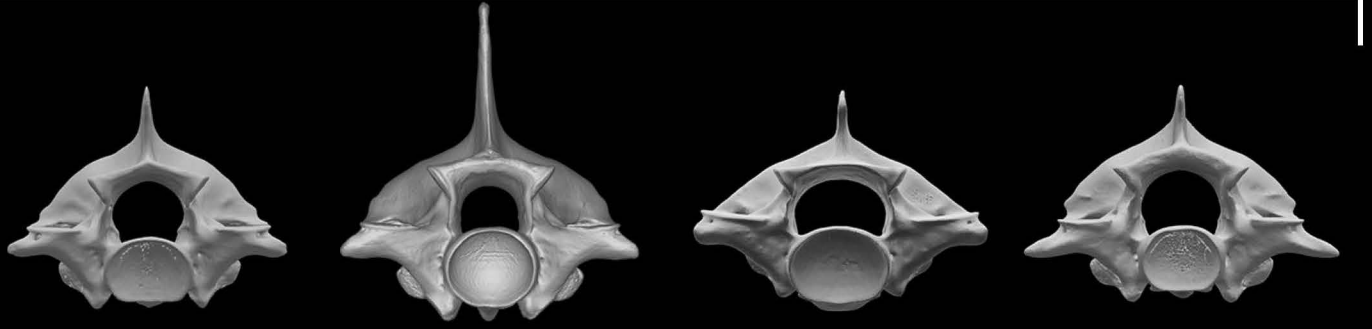
Chironius bicarinatus

Spilotes pullatus

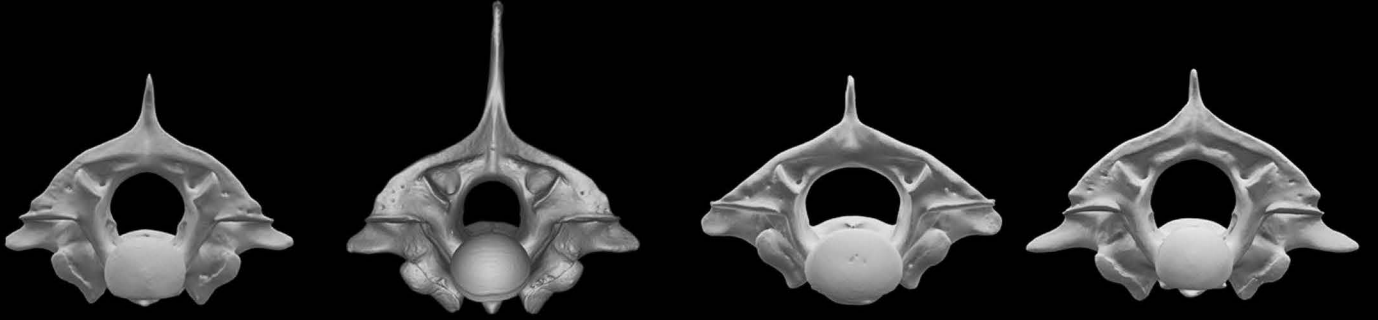
Oxybelis aeneus

Mastigodryas boddaerti

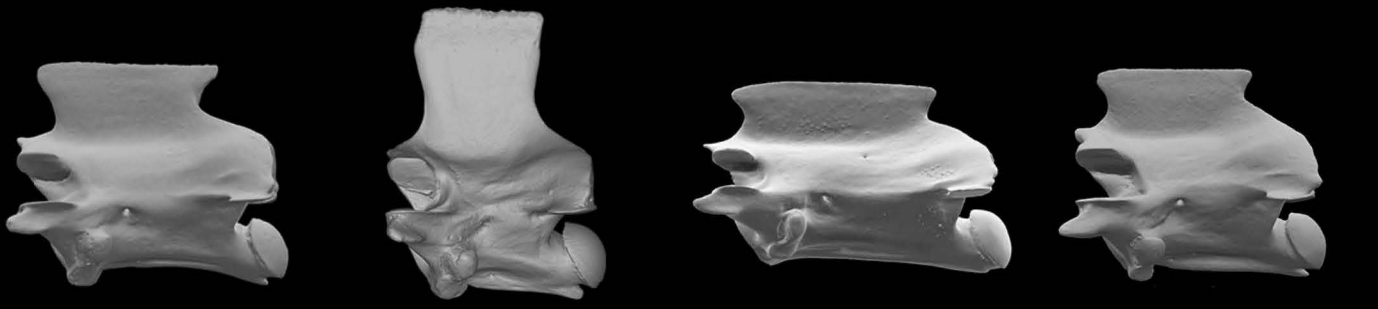
Anterior



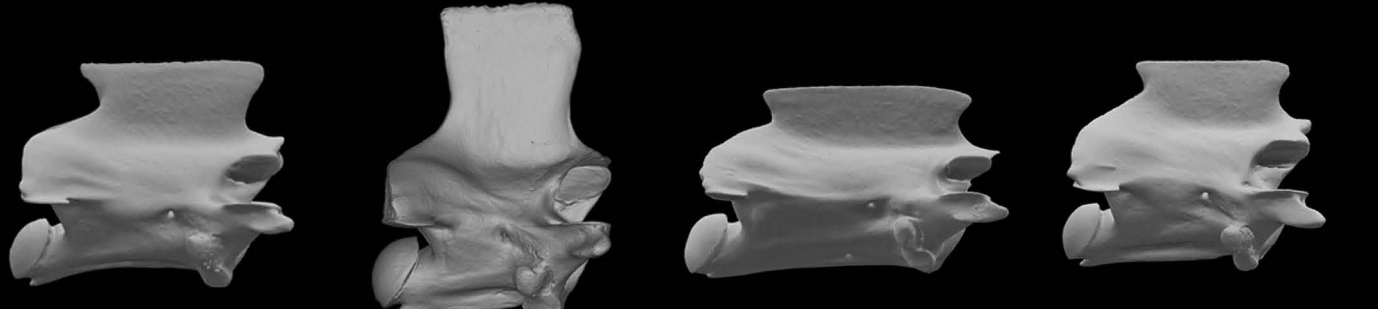
Posterior



Lateral



Dorsal



Ventral

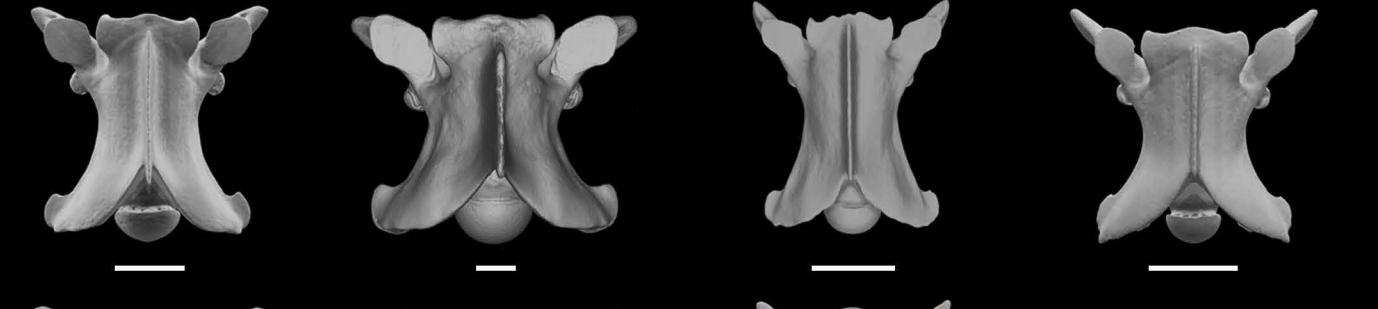


Fig. I

Colubridae

Dipsadidae

Simophis rhinostoma

Heterodon platirhinos

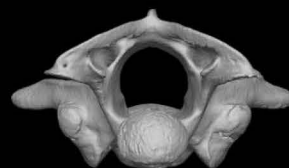
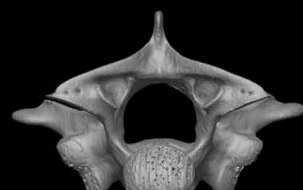
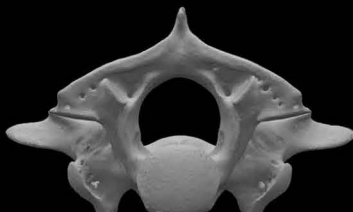
Farancia abacura

Carphophis amoenus

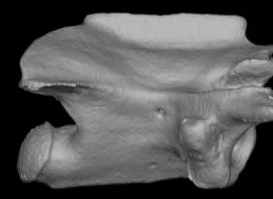
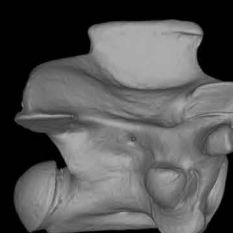
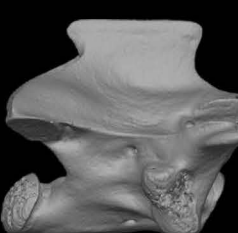
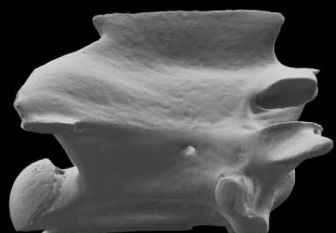
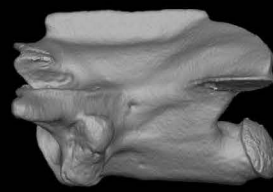
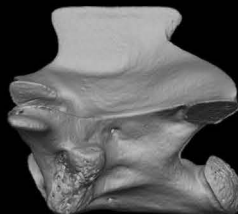
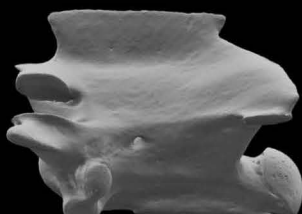
Anterior



Posterior



Lateral



Dorsal



Ventral

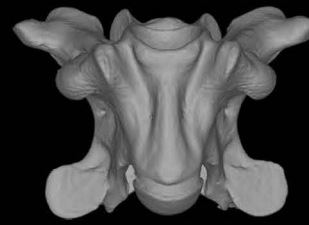
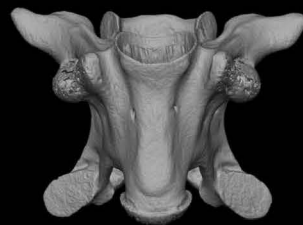


Fig. J

Dipsadidae

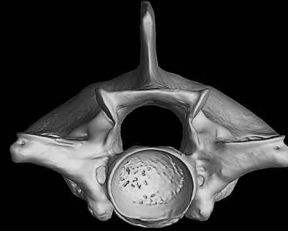
Synophis lasallei

Nothopsis rugosus

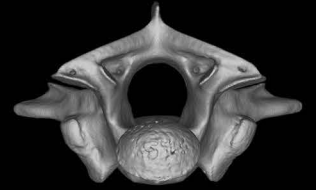
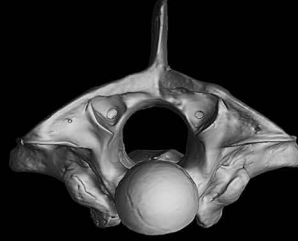
Dipsas indica

Atractus serranus

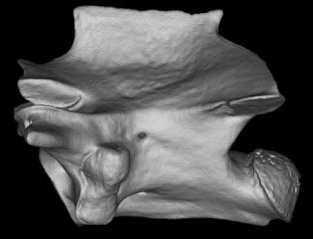
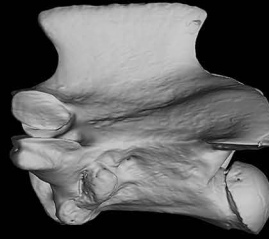
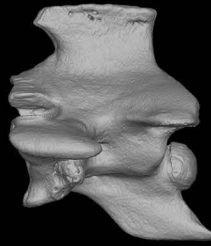
Anterior



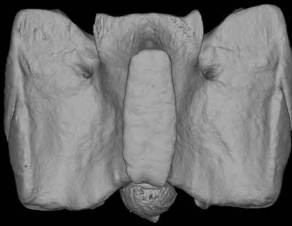
Posterior



Lateral



Dorsal



Ventral

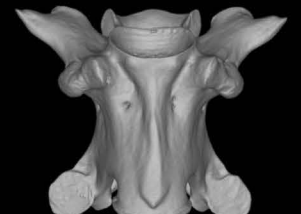
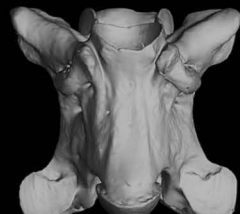


Fig. K

Dipsadidae

Boiruna maculata

Helicops angulatus

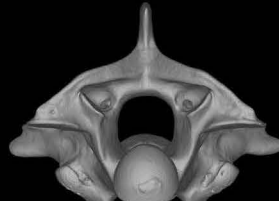
Philodryas nattereri

Oxyrhopus clathratus

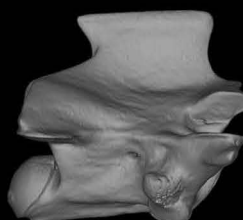
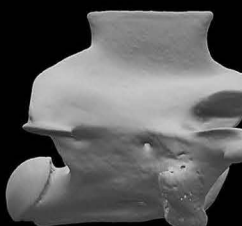
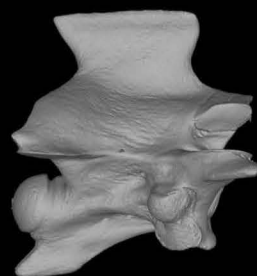
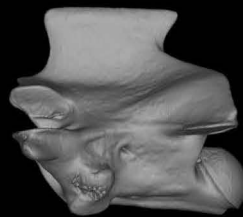
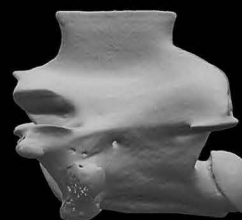
Anterior



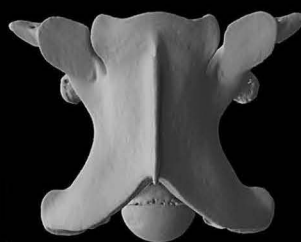
Posterior



Lateral



Dorsal



Ventral

