

Supplementary Online Content

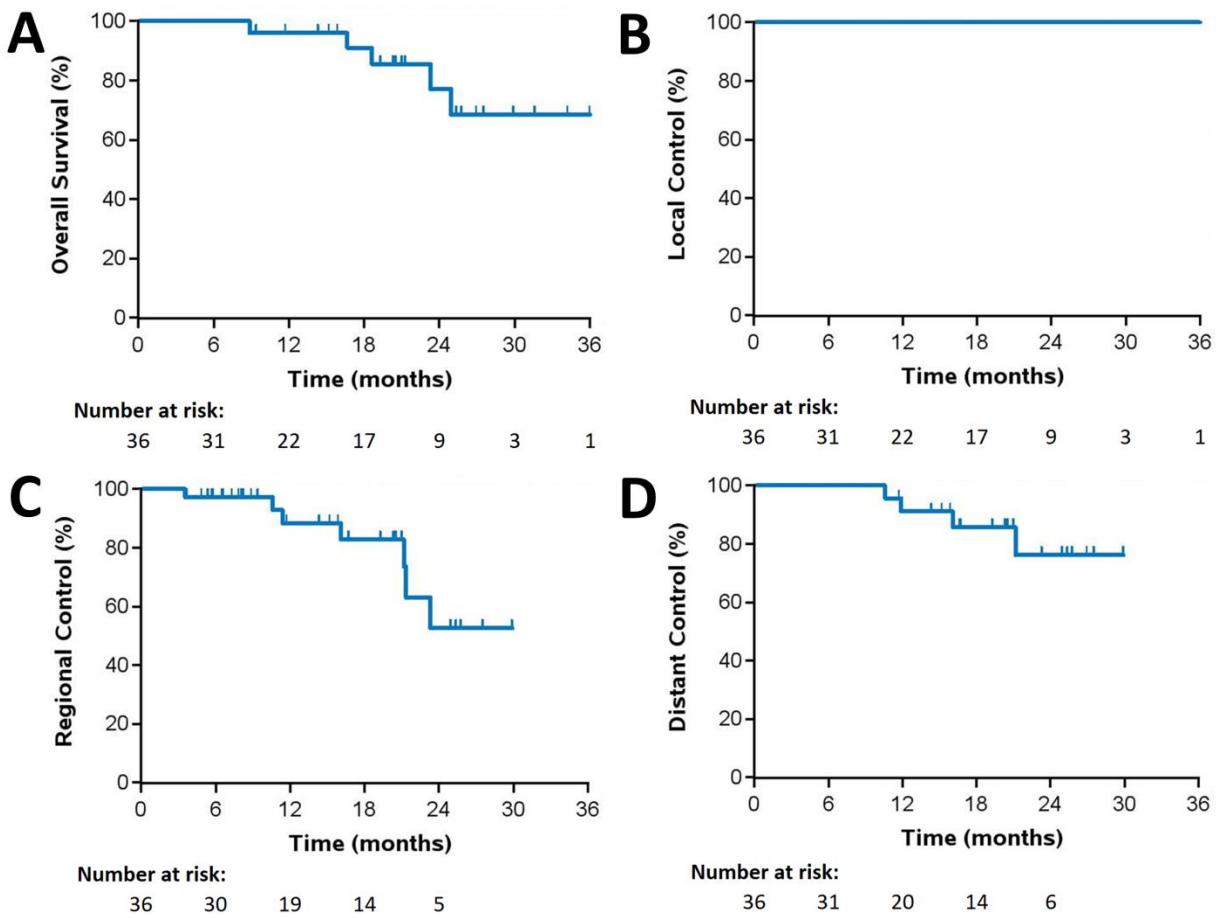
Palma DA, Nguyen TK, Louie AV, et al. Measuring the integration of stereotactic ablative radiotherapy plus surgery for early-stage non–small cell lung cancer: a phase 2 clinical trial. *JAMA Oncol*. Published online February 21, 2019. doi:10.1001/jamaoncol.2018.6993

eFigure. Kaplan-Meier plots for patients receiving surgery for (a) overall survival, (b) local control, (c) regional control, and (d) distant control (n=36)

eTable. Summary of quality of life end points for all patients and stratified by follow-up visit (n=40)

This supplementary material has been provided by the authors to give readers additional information about their work.

eFigure. Kaplan-Meier plots for patients receiving surgery for (a) overall survival, (b) local control, (c) regional control, and (d) distant control (n=36)



eTable. Summary of quality of life end points for all patients and stratified by follow-up visit (n=40)

Characteristic	Follow-up Visit			
	Pre-treatment (n=40)	8 Weeks Post-SABR (n=35)	3 Months Post-Surgery (n=28)	9 Months Post-Surgery (n=20)
FACT-G Physical – mean ± SD	25.2 ± 4.7	24.2 ± 5.2	24.3 ± 3.5	23.7 ± 4.6
vs. Pre-treatment	--	-0.8 ± 2.8	-1.8 ± 3.8	-2.3 ± 4.2
p-value	--	0.11	0.02	0.02
FACT-G Social – mean ± SD	25.4 ± 3.1	26.2 ± 2.4	26.1 ± 2.5	25.7 ± 2.8
vs. Pre-treatment	--	0.7 ± 2.2	0.6 ± 2.9	-0.7 ± 3.4
p-value	--	0.05	0.26	0.38
FACT-G Emotional – mean ± SD	18.9 ± 3.6	19.3 ± 4.1	20.5 ± 2.5	20.5 ± 3.2
vs. Pre-treatment	--	0.5 ± 3.3	2.2 ± 3.8	1.5 ± 2.5
p-value	--	0.35	0.005	0.02
FACT-G Functional – mean ± SD	22.1 ± 5.3	21.4 ± 6.1	21.4 ± 4.9	20.6 ± 6.2
vs. Pre-treatment	--	-0.6 ± 3.8	-1.0 ± 5.5	-2.3 ± 6.4
p-value	--	0.37	0.36	0.13
FACT-G Total Score^a – mean ± SD	91.5 ± 12.2	91.1 ± 14.4	92.4 ± 8.8	90.5 ± 13.3
vs. Pre-treatment	--	-0.1 ± 7.0	0.0 ± 10.2	-3.8 ± 11.7
p-value	--	0.94	>0.99	0.16
FACT-L Total Score^b – mean ± SD	113.6 ± 13.9	114.8 ± 15.5	113.9 ± 11.3	112.3 ± 16.3
vs. Pre-treatment	--	1.2 ± 8.6	-0.4 ± 11.8	-4.0 ± 13.7
p-value	--	0.44	0.85	0.21
Fact-L Trial Outcome Index^c – mean ± SD	69.4 ± 10.9	68.8 ± 12.2	67.3 ± 9.3	66.1 ± 12.8
vs. Pre-treatment	--	-0.3 ± 7.7	-3.2 ± 10.1	-4.8 ± 12.2
p-value	--	0.80	0.11	0.10
Trial Outcome Index³ – no.(%)				
Increase (≥ 5 point increase)	--	7 (21)	5 (18)	5 (25)
Stable (< 5 point change)	--	19 (56)	13 (46)	8 (40)
Decrease (≥ 5 point decrease)	--	8 (23)	10 (36)	7 (35)

^aDefined as sum of FACT-G Physical, Social, Emotional and Functional well-being;

^bDefined as sum of FACT-G Physical, Social, Emotional and Functional well-being and Lung Cancer Subscale;

^cDefined as sum of FACT-G Physical and Functional well-being and Lung Cancer Subscale;

P-values < 0.05 shown as **BOLD**.