

## Supplementary Online Content

Xu S, Sagiv O, Rubin ML, et al. Validation study of the *AJCC Cancer Staging Manual*, eighth edition, staging system for eyelid and periocular squamous cell carcinoma. *JAMA Ophthalmol*. Published online March 14, 2019.  
doi:10.1001/jamaophthalmol.2019.0238

**eTable.** Baseline staging (*AJCC 7* and *AJCC 8*) by tumor size

**eFigure 1.** Kaplan-Meier survival curve for disease-specific survival of patients with periocular squamous cell carcinoma by nodal metastasis status at last follow-up (n = 109)

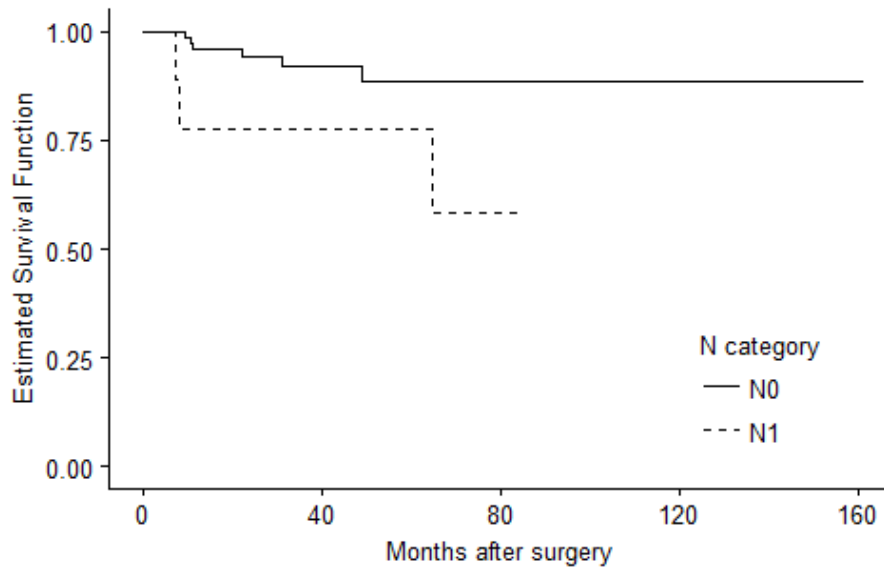
**eFigure 2.** Kaplan-Meier curve by T category for local recurrence (*AJCC 7* definition)

This supplementary material has been provided by the authors to give readers additional information about their work.

**eTable.** Baseline and final staging (*AJCC 7* and *AJCC 8*) by tumor size

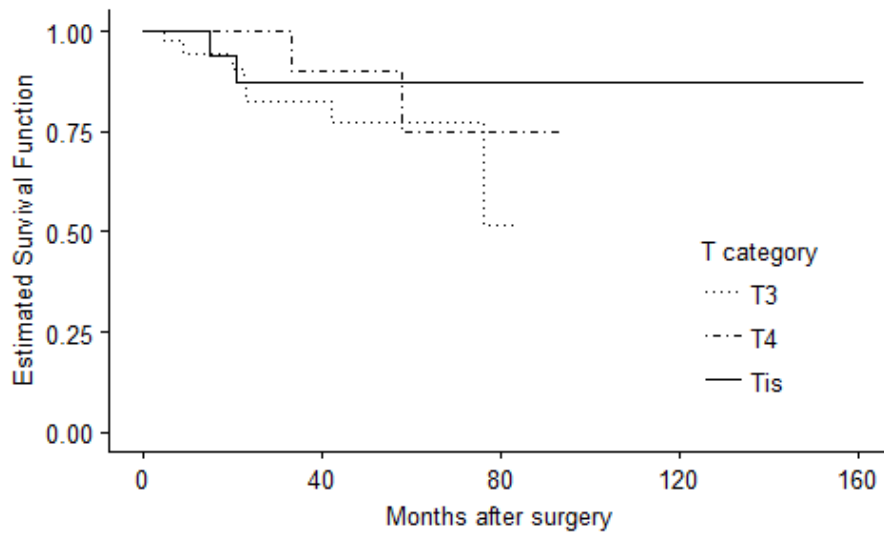
7th-edition staging system		8th-edition staging system	
T category	N (%)	T category	N (%)
Tis	23 (21)	Tis	23 (21)
T1	7 (6)	T1	13 (12)
T2	20 (18)	T2	21 (19)
T3	41 (38)	T3	14 (13)
T4	18 (17)	T4	38 (35)

**eFigure 1.** Kaplan-Meier survival curve for disease-specific survival of patients with periocular squamous cell carcinoma by nodal metastasis status at last follow-up (n = 109)



		No. at risk				
		0	40	80	120	160
N0	98	36	4	1	1	
N1	11	4	1	0	0	

**eFigure 2.** Kaplan-Meier curve by T category for local recurrence (AJCC 7 definition)



		No. at risk				
		0	40	80	120	160
T3	41	15	1	0	0	0
T4	18	9	2	0	0	0
T1s	23	7	1	1	1	1