

Activation of Toll-like Receptor 2 (TLR2) induces Interleukin-6 trans-signaling

Charlotte M. Flynn¹, Yvonne Garbers², Juliane Lokau^{1,§}, Daniela Wesch³, Dominik M. Schulte⁴, Matthias Laudes⁴, Wolfgang Lieb⁵, Samadhi Aparicio-Siegmund¹ and Christoph Garbers^{1,*,§}

¹Institute of Biochemistry, Kiel University, Kiel, Germany;

²Institute of Psychology, Kiel University, Kiel, Germany;

³Institute of Immunology, University Hospital Schleswig-Holstein, Campus Kiel, Kiel, Germany;

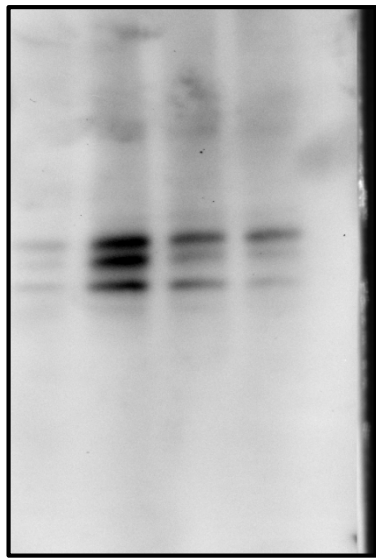
⁴Department of Internal Medicine 1, Kiel University, Kiel, Germany;

⁵Institute of Epidemiology, Kiel University, Kiel, Germany

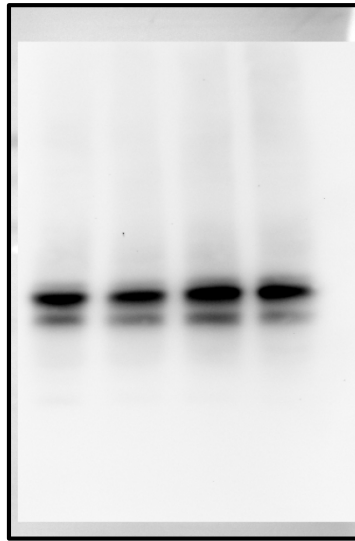
*Correspondence to: Dr. Christoph Garbers (christoph.garbers@med.ovgu.de, +49 391 67-15488), Department of Pathology, Otto-von-Guericke-University Magdeburg, Medical Faculty, Magdeburg, Germany; Fax: +49 391 67-15818

§present address: Department of Pathology, Otto-von-Guericke-University Magdeburg, Medical Faculty, Magdeburg, Germany

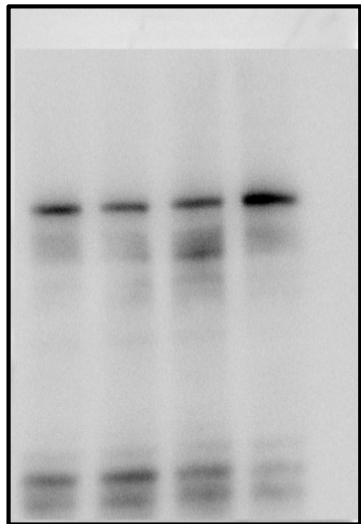
Figure 5E



pERK

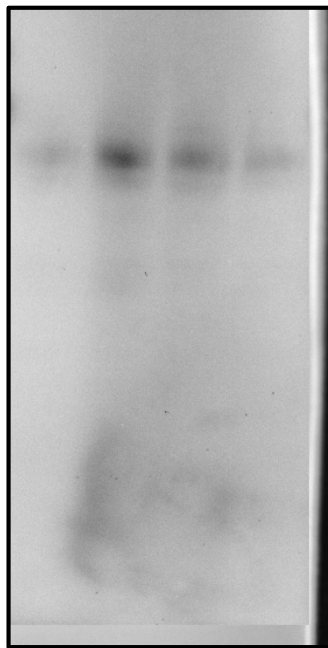


ERK

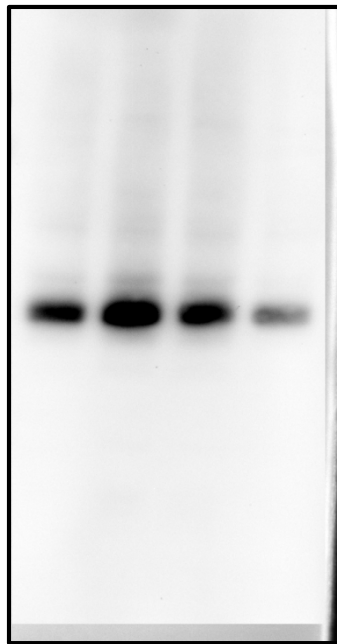


Actinin

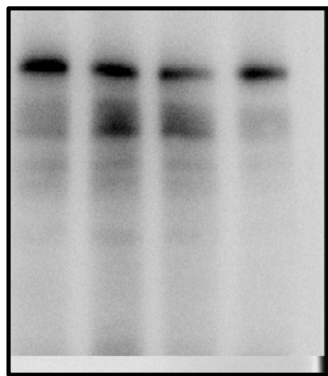
Figure 5F



p-p38

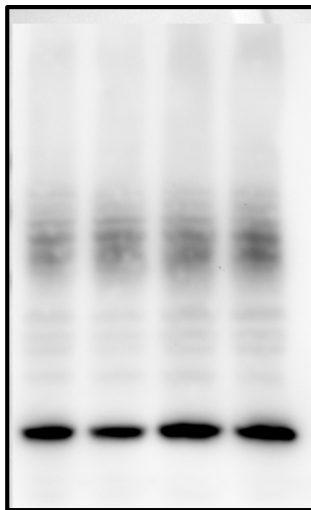


p38

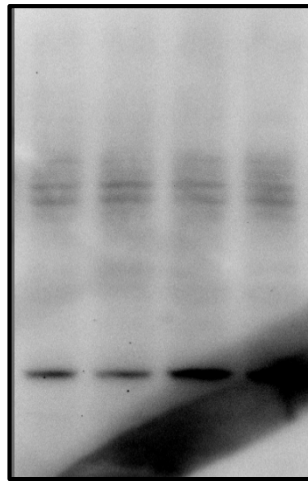


Actinin

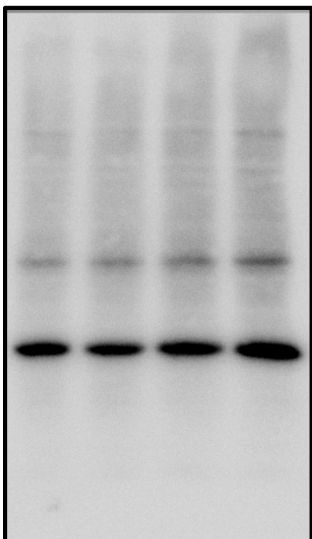
Figure 5G



p-p65



p65



GAPDH