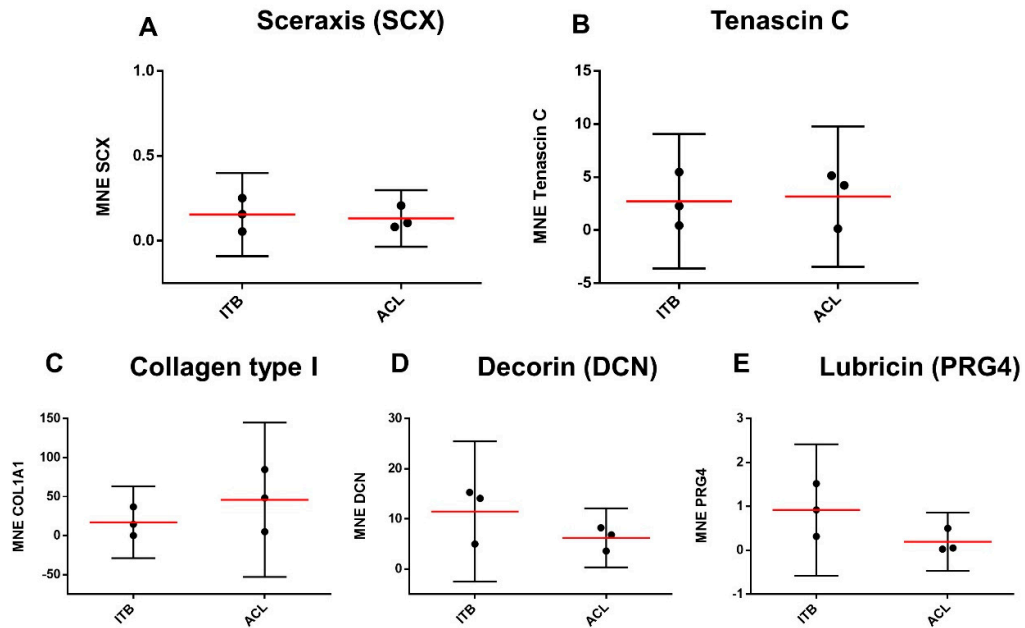


**Supplementary Figure 1.** Cell numbers versus the donor age in ITB tissue. There was a significant correlation. However, when excluding the very young donor (5 weeks) the interrelation was no longer significant.



**Supplementary Figure 2.** Gene expression analyses of the typical ligament components in monolayer-cultured ITB and ACL cells (passages 3–4). The mean normalized expression (MNE) of the tendon marker scleraxis (SCX) (A), the fibroblast marker tenascin C (B), the ECM proteins collagen type I (COL1A1: collagen type 1 alpha 1 chain) (C), decorin (DCN) (D), and lubricin (PRG4) (E) was determined by using RTD PCR. Hypoxanthine-guanine phosphoribosyltransferase (HPRT) served as a reference gene.