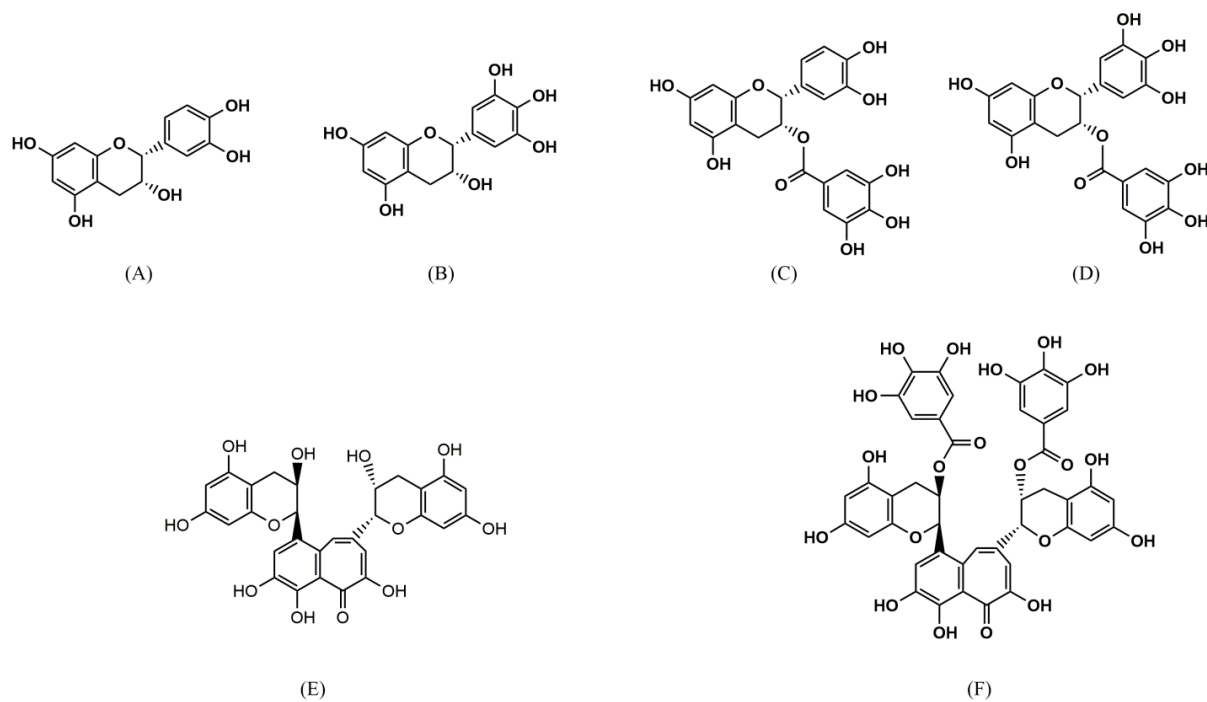


[Supplemental Information]

**The theaflavin-enriched fraction stimulates adipogenesis
in human subcutaneous fat cells**

Phil June Park, Chan-Su Rha, Sung Tae Kim

Supplemental Figure 1. Chemical structure of (-)-epicatechins and theaflavins. (A) (-)-epicatechin, (B) (-)-epigallocatechin, (C) (-)-epicatechingallate, (D) (-)-epigallocatechin gallate, (E) theaflavin, (F) theaflavin 3,3'-di-*O*-gallate.



Supplemental Figure 2. Preparative chromatography of CoF-GT for obtaining TF-enriched fraction (the 4th fraction).

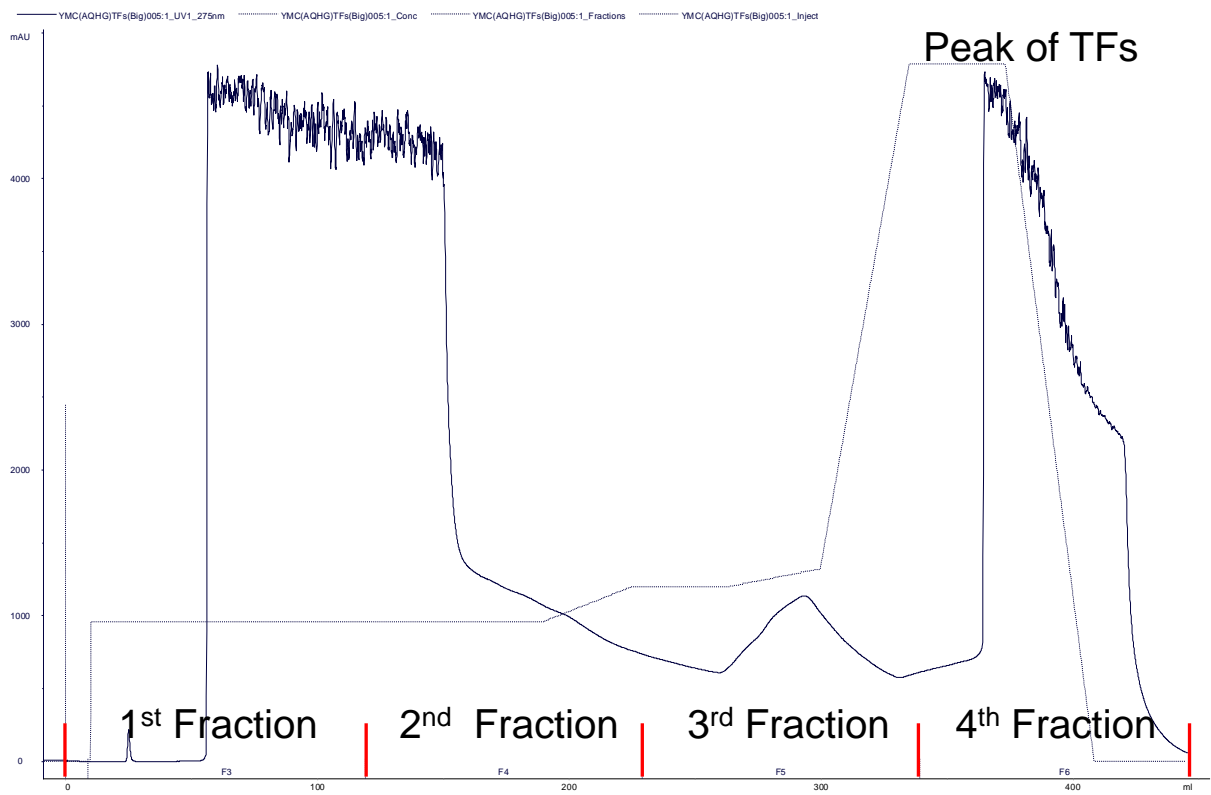


Table 1. The contents of theaflavins in samples.

Sample	TF	TF3G	TF3'G	TFDG	Sum
* CoF-GT rich fraction	21.56±0.96 (41.0%)	20.70±0.93 (39.4%)	4.11±0.2 (7.8%)	6.21±0.22 (11.8%)	52.57±2.30 (100%)
# F-GT richfraction	7.04±0.29 (19.2%)	15.49±0.71 (42.3%)	3.18±0.16 (8.7%)	10.89±0.52 (29.8%)	36.61±1.67 (100%)

* Data shown: **theaflavins mg/g of fraction of extract** (mean ± SEM, n=3)

Lower data shown: theaflavins % (w/w) of fraction of extract (mean, n=3)