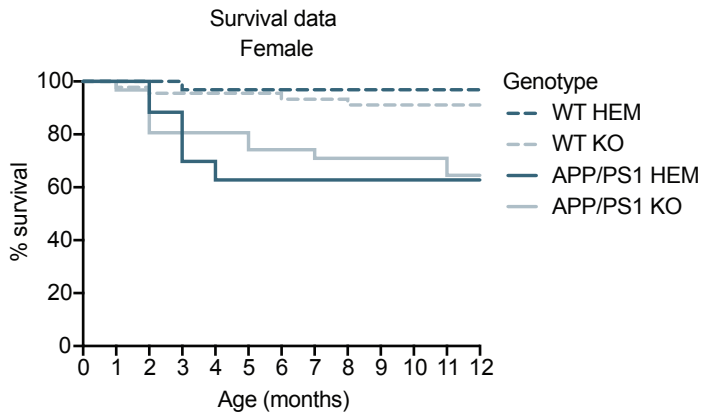
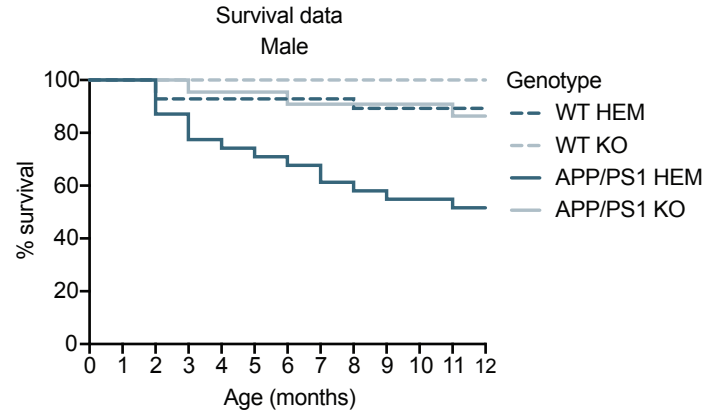


# Supplemental Figure 1

**a**



**b**



Log-rank test, (Bonferroni correction)

APP/PS1 KO female vs APP/PS1 KO male:  $p=0.031$ , ( $p=0.372$ )

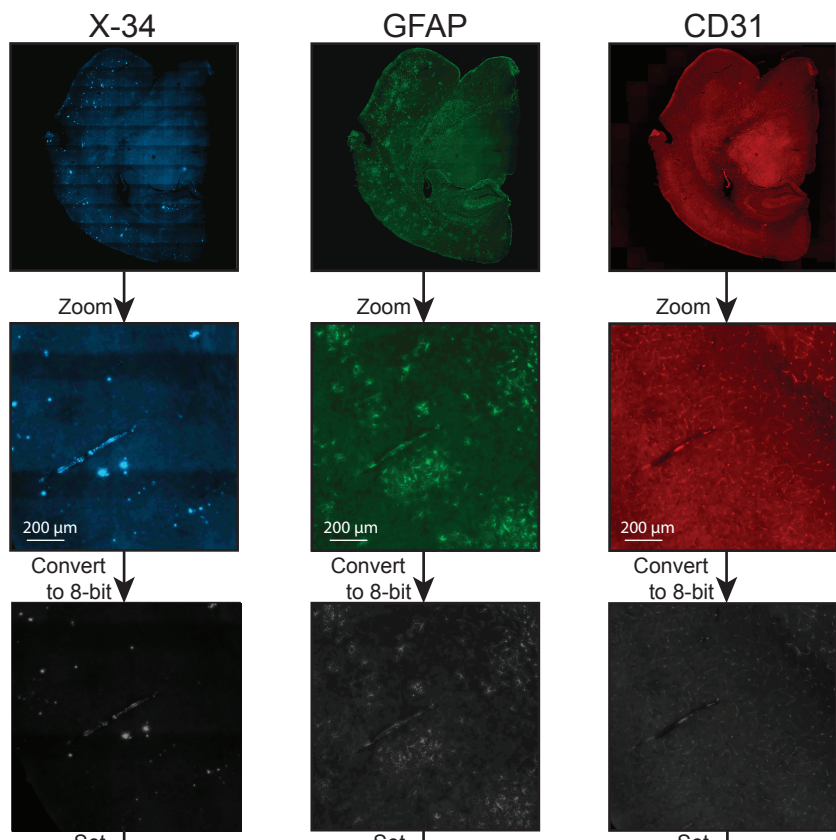
APP/PS1 HEM female vs WT HEM female:  $p=0.001$ , ( $p=0.008$ )

APP/PS1 KO female vs WT KO female:  $p=0.013$ , ( $p=0.151$ )

APP/PS1 HEM male vs WT HEM male:  $p=0.002$ , ( $p=0.019$ )

APP/PS1 HEM male vs APP/PS1 KO male:  $p=0.005$ , ( $p=0.055$ )

# Supplemental Figure 2



Measure area (amyloid area)  
Fig 2a-d

Measure area (vascular area)  
Supp Fig 4a-d

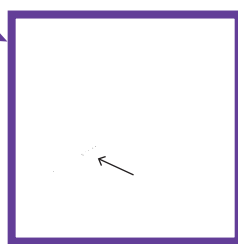
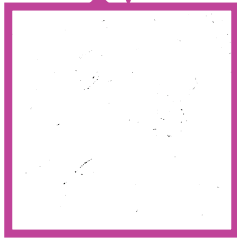
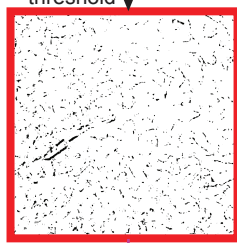
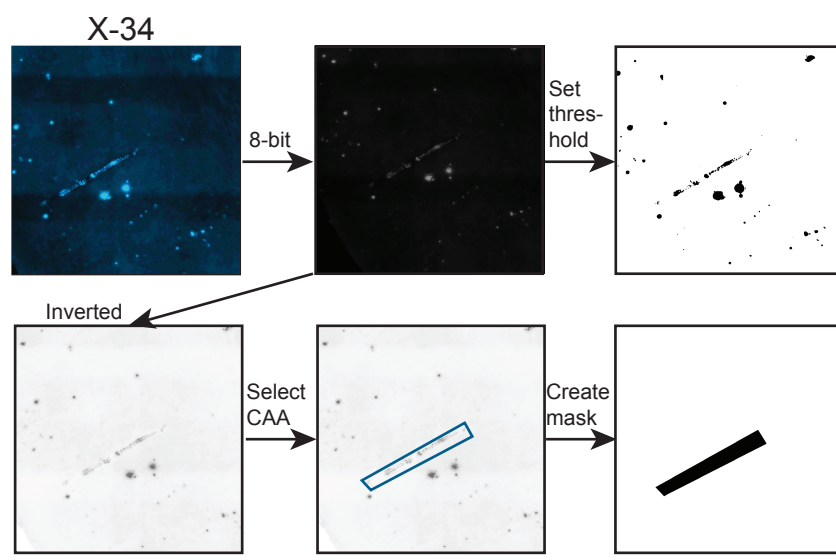
Measure area (GFAP area)  
Fig 4b-e

Measure area (vascular GFAP)  
Fig 4f-i

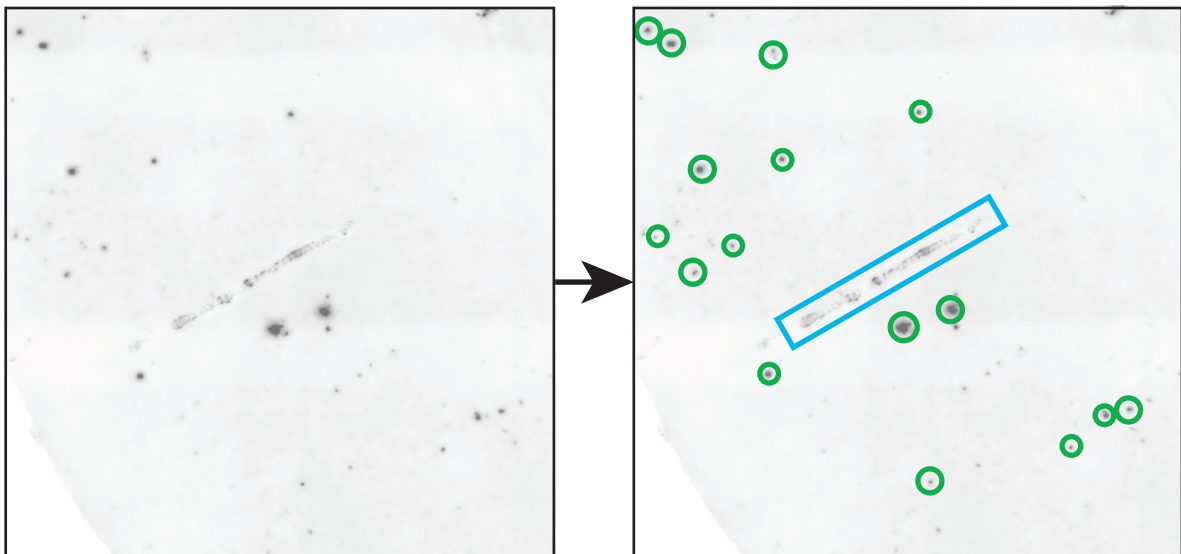
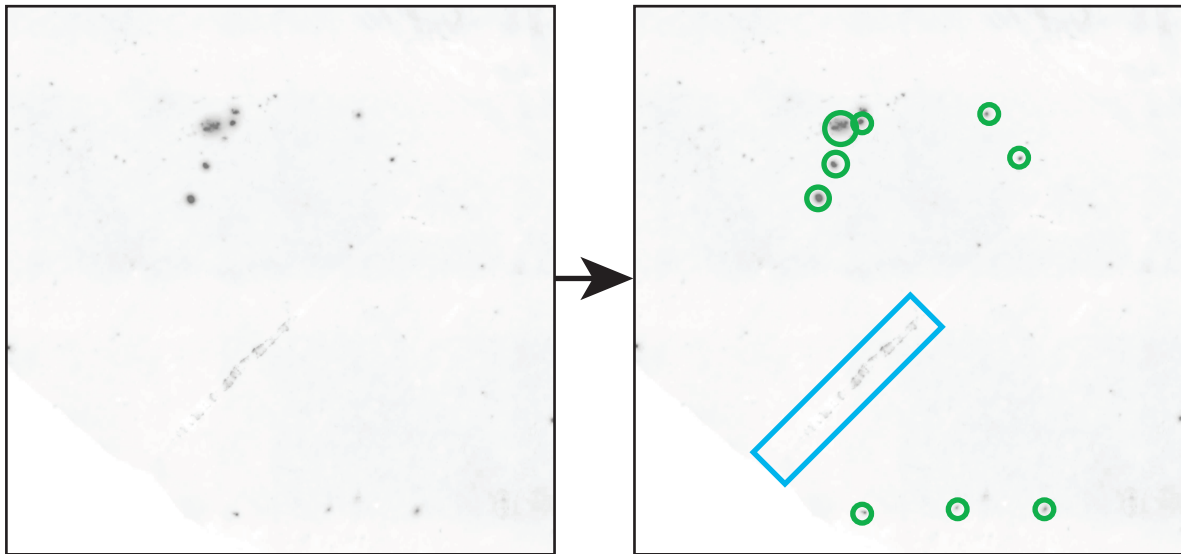
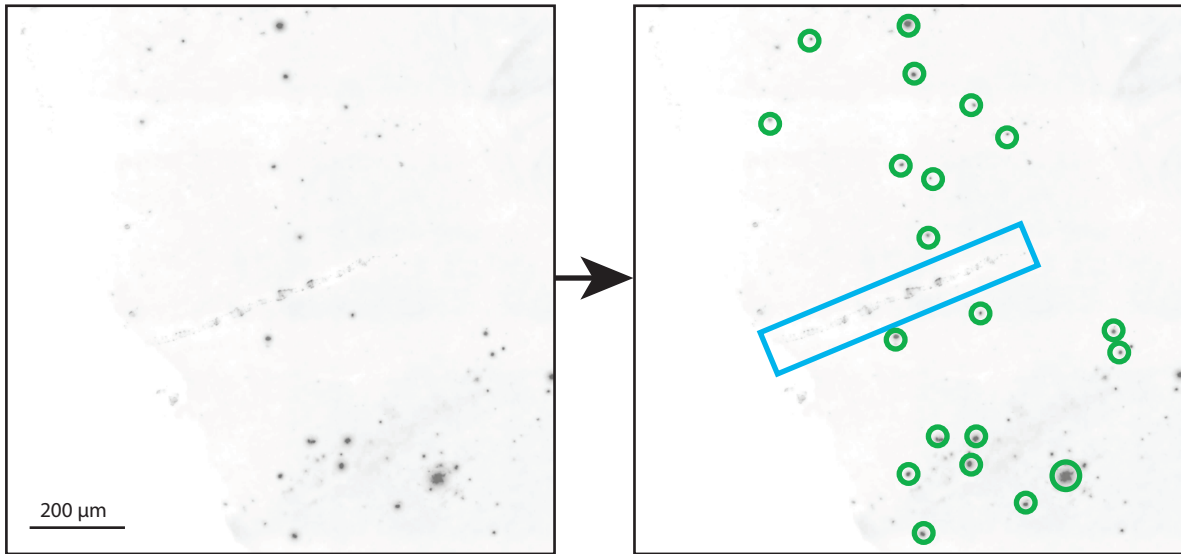
Measure area (amyloid-associated GFAP)  
Fig 5a-d

Measure area (CAA-associated vascular GFAP)  
Fig 5e-g


Measure area (CAA)  
Fig 2e-f



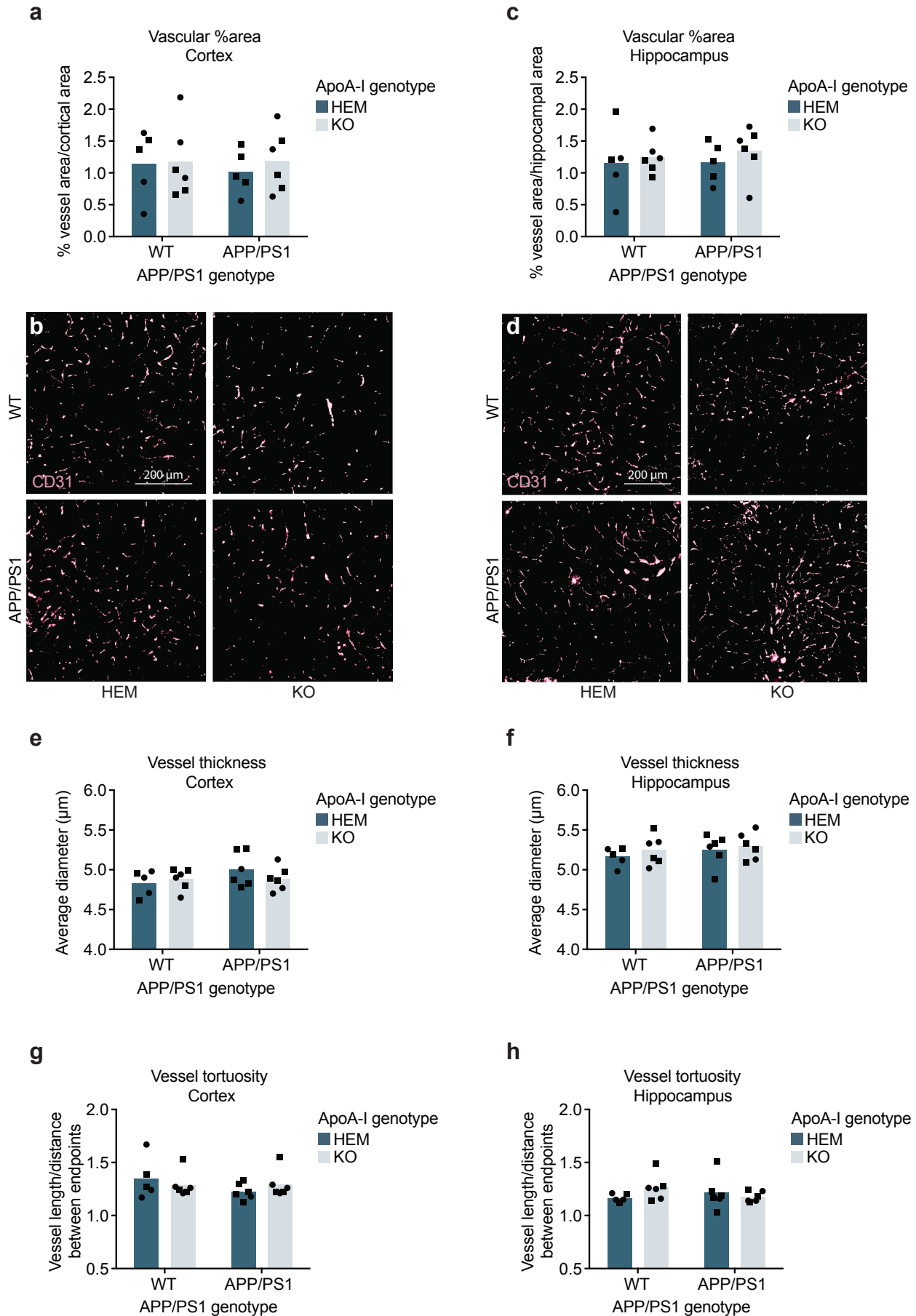
### Supplemental Figure 3



 vascular amyloid

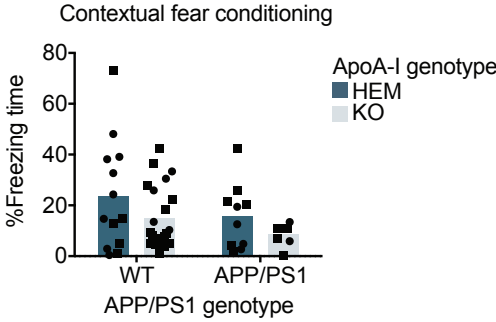
 parenchymal amyloid plaque

# Supplemental Figure 4



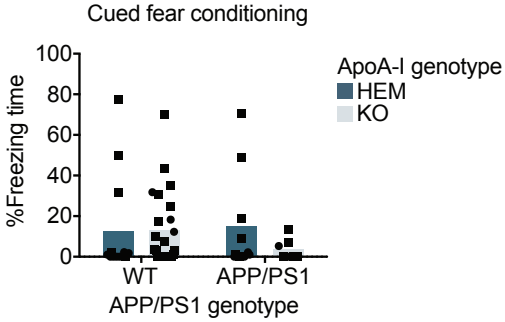
# Supplemental Figure 5

**a**



APP/PS1 genotype effect  $p=0.109$   
ApoA-I genotype effect  $p=0.077$

**b**



# Supplemental Figure 6

