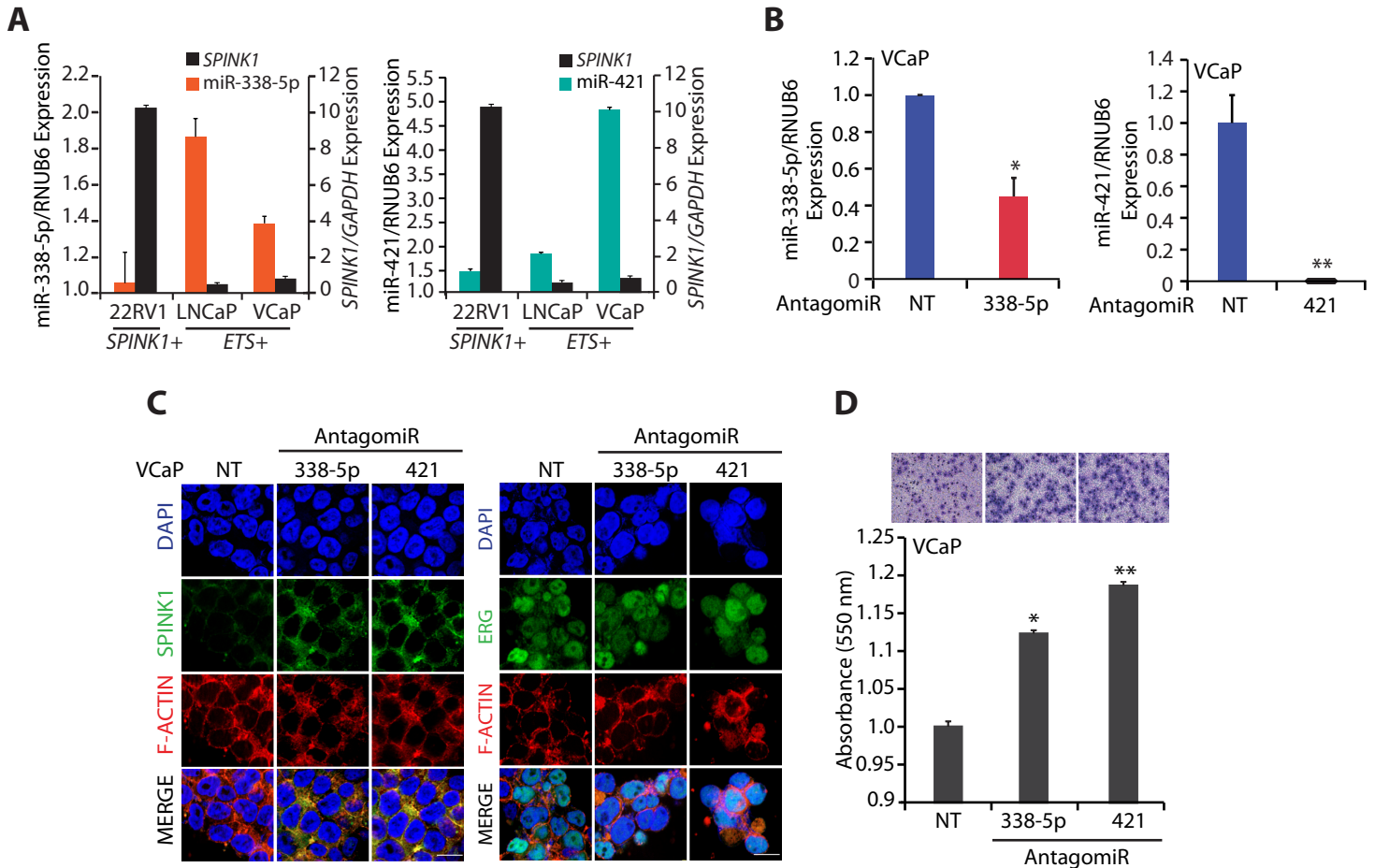


Supplementary Figure S1



Supplementary Figure S1. MiR-338-5p and miR-421 expression is associated with lower Gleason score and clinical stage and antagomiRs against miR-338-5p/-421 induce SPINK1 expression in VCaP cells.

A. QPCR data showing relative expression of *SPINK1*, miR-338-5p and miR-421 in 22RV1 (*SPINK1*+), LNCaP and VCaP (*ETS*+) PCa cells ($n=3$ biologically independent samples). **B.** Taqman microRNA assay showing relative expression of miR-338-5p and miR-421 in VCaP cells transfected with antagomiRs for respective miRNAs. **C.** Immunostaining for *SPINK1* (left panel) and *ERG* (right panel) using same cells as in (B), scale bar represents 20 μ m. **D.** Transwell migration assay using same cells as in (B). Representative fields of the migrated cells are shown in the inset.

Bar plot represent mean \pm SEM. * $P \leq 0.05$ and ** $P \leq 0.001$ using two-tailed unpaired Student's *t* test.