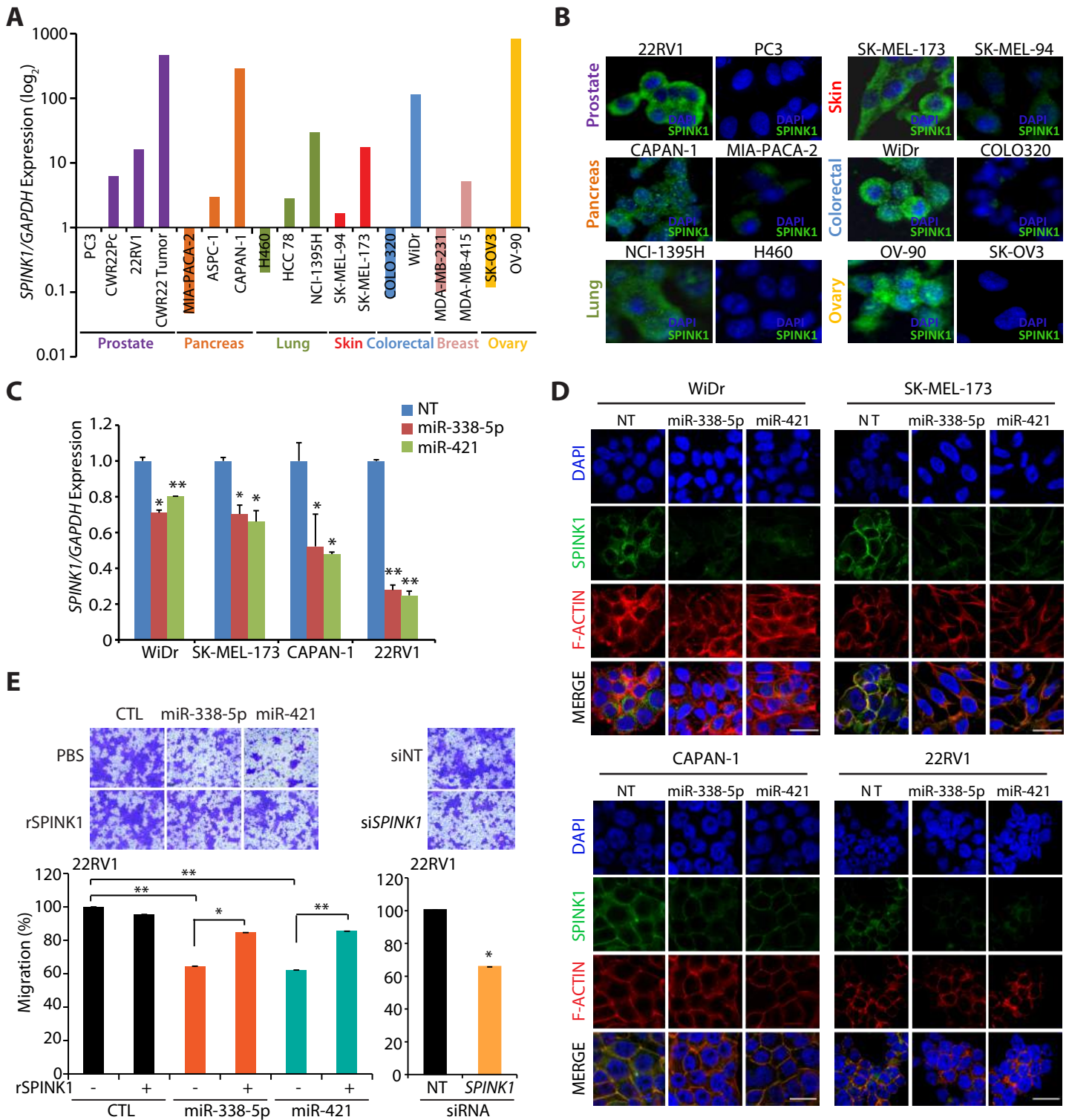


Supplementary Figure S2



Supplementary Figure S2. MiR-338-5p and miR-421 suppresses *SPINK1* expression in multiple *SPINK1*+ cancer cell lines.

A. QPCR analysis showing relative expression of *SPINK1* in multiple cancer cell lines. **B.** Immunostaining of *SPINK1* in *SPINK1*-positive and *SPINK1*-negative cancer cell lines as indicated. **C-D.** Relative expression of *SPINK1* both at transcript (C) and at protein (D) level in *SPINK1*+ cancer cell lines, namely, colorectal (WiDr), melanoma (SK-MEL-173), pancreatic (CAPAN-1), and prostate (22RV1) cells transfected with mimics for miR-338-5p, miR-421 and control. Scale bar represents 20 μ m. **E.** Cell migration assay performed in the presence or absence of recombinant *SPINK1* (r*SPINK1*) using stable 22RV1-miR-338-5p, 22RV1-miR-421 and 22RV1-CTL cells. Small interfering RNA (siRNA) mediated *SPINK1* silenced 22RV1 cells were used as control. Bar plot represent mean \pm SEM. * $P \leq 0.05$ and ** $P \leq 0.001$ using two-tailed unpaired Student's *t* test.