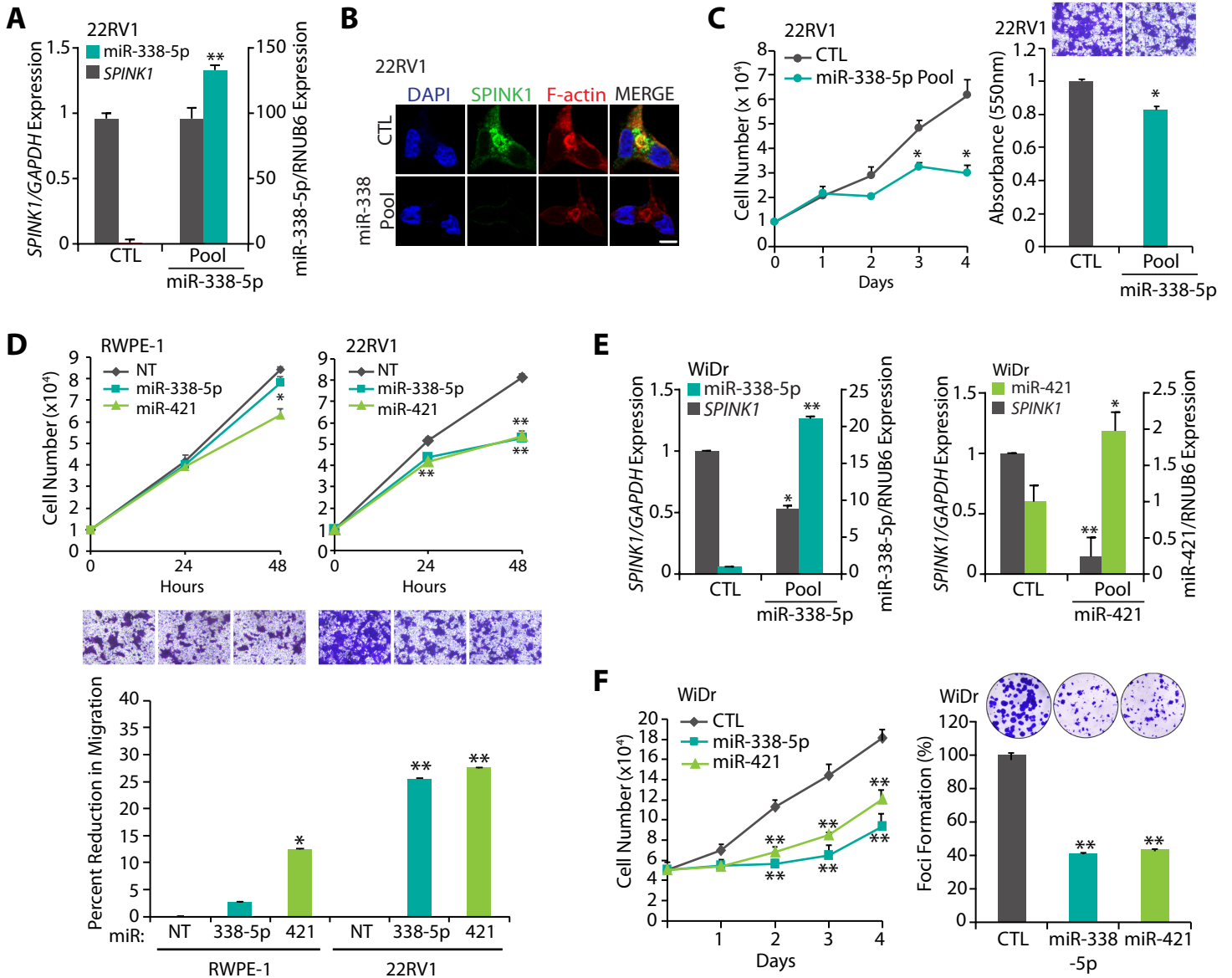


## Supplementary Figure S3



### Supplementary Figure 3. Tumor suppressive role of miR-338-5p and miR-421 in SPINK1 positive cancer.

**A.** QPCR data showing relative expression of miR-338-5p and *SPINK1* in miR-338-5p overexpressing pooled 22RV1 cells. **B.** Immunostaining for *SPINK1* using same cells as in (A), scale bar represents 10µm. **C.** Cell proliferation and migration assay using same cells as in (A). **D.** Cell proliferation assay and migration assay in RWPE-1 (benign prostate epithelial) and 22RV1 (*SPINK1* Positive) cells transfected with miR-338-5p and miR-421 mimics. **E.** QPCR data showing relative expression of miR-338-5p, miR-421 and *SPINK1* in miRNA overexpressing WiDr (*SPINK1* positive) colon adenocarcinoma cells. **F.** Cell proliferation and foci formation assay using same cells as in (E). Bar plot represent mean  $\pm$  SEM. \* $P \leq 0.05$  and \*\* $P \leq 0.001$  using two-tailed unpaired Student's *t* test.