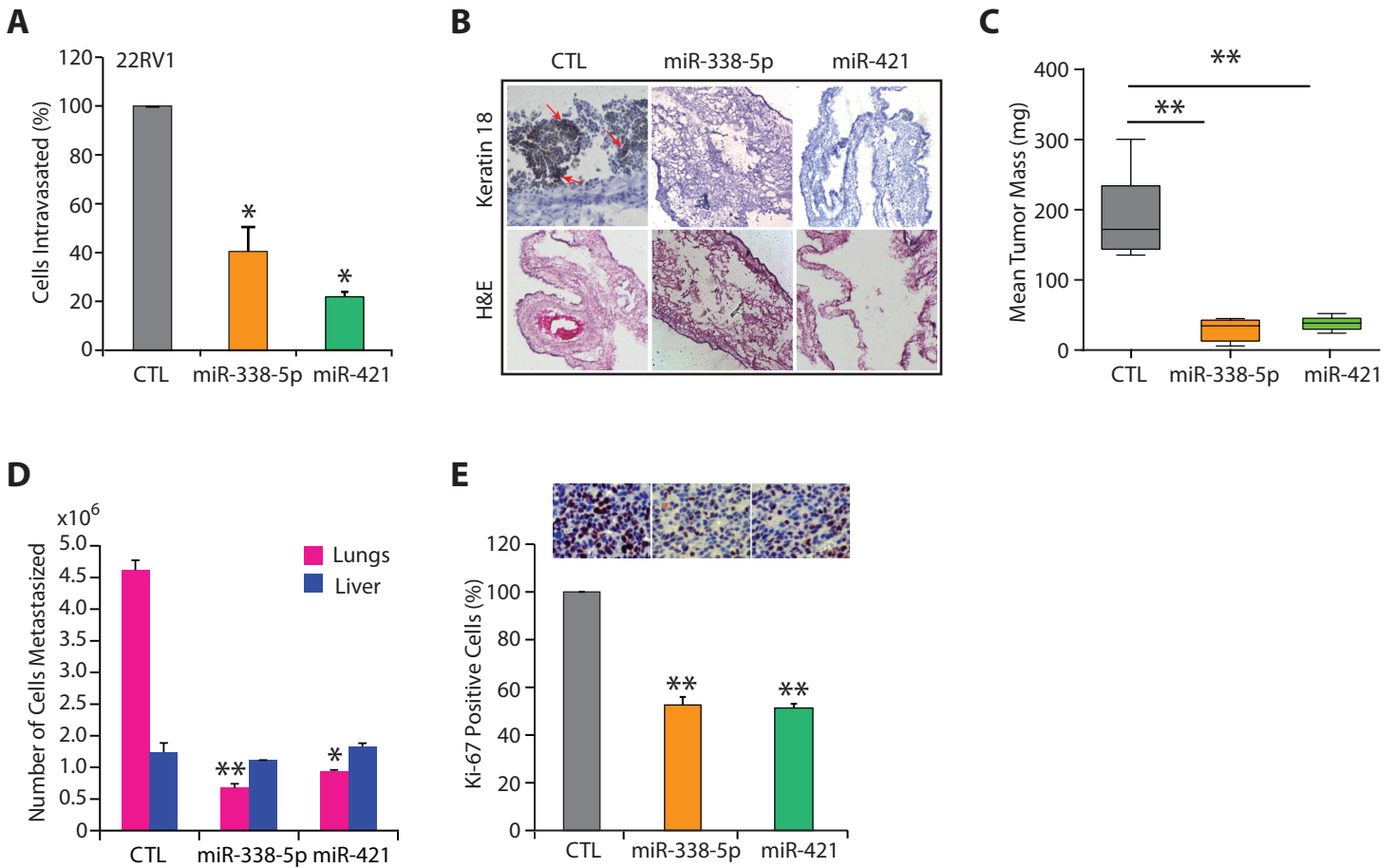


Supplementary Figure S4



Supplementary Figure S4. MiR-338-5p and miR-421 impairs the ability of 22RV1 cells to invade the CAM basement membrane.

A. Genomic DNA extracted from the lower CAM of chick embryos (n=6) implanted with 22RV1-miR-338-5p, 22RV1-miR-421 or 22RV1-CTL cells, was quantified for the number of human cancer cells intravasated by qPCR using human-specific *Alu* primers. **B.** Representative images showing hematoxylin & eosin staining (left panel) and immunohistochemical staining of human-specific cytokeratin-18 (right panel) of the upper CAM harvested from the chick embryos as in (A), 20x magnification. **C.** Mean weight of the tumor mass (n=6) excised from the Chick CAM assay as indicated. **D.** Human-specific *Alu* PCR quantification of metastasized human cells using genomic DNA extracted from the chick embryos' lungs and liver of CAM assay. **E.** Ki-67 staining of tumor specimens excised from the xenografted mice. Ki-67 positive cells were counted from 10 independent fields for each tumor section. Bar plot represent mean \pm SEM. ** $P \leq 0.005$ and * $P \leq 0.05$ using two-tailed unpaired Student's *t* test.