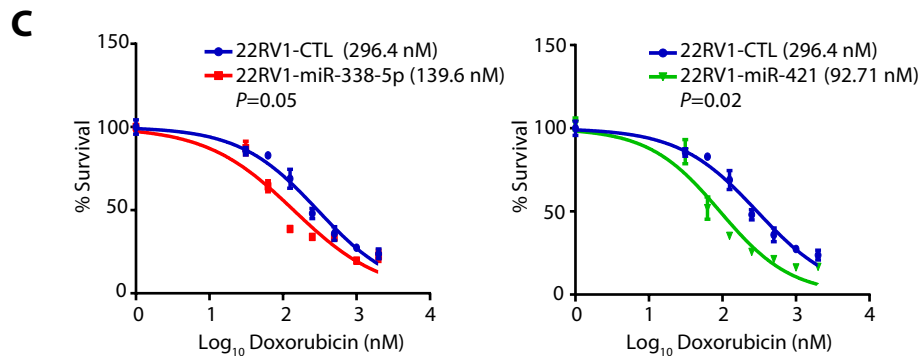
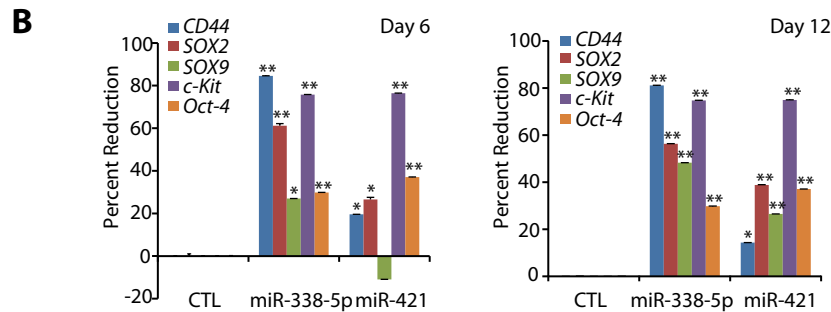
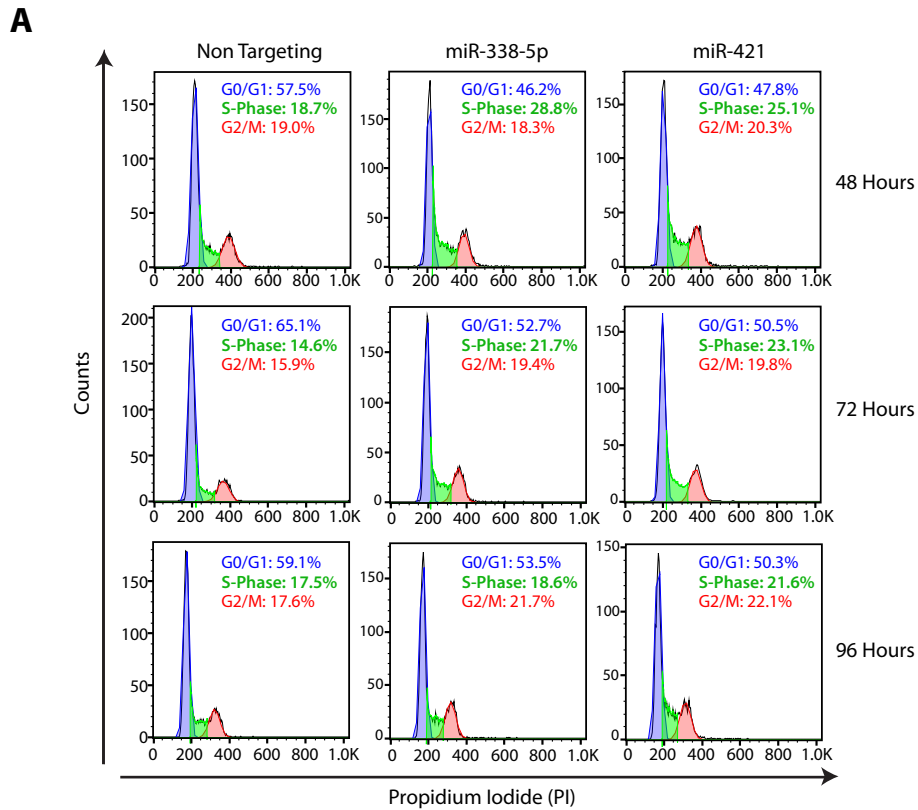


Supplementary Figure S6



Supplementary Figure S6. MiR-338-5p and miR-421 induces S-phase arrest and confers sensitivity to chemotherapeutic drugs.

A. Flow cytometric analysis using propidium iodide DNA staining demonstrate cell cycle arrest in 22RV1 cells transfected with miR-338-5p and miR-421 mimics at the indicated time points. **B.** QPCR analysis of stem cell markers using prostatosphere derived from 22RV1-miR-338-5p, 22RV1-miR-421 and 22RV1-CTL cells. Bar plot represent mean \pm SEM. ** $P \leq 0.005$ and * $P \leq 0.05$ using two-tailed unpaired Student's *t* test. **C.** Cytotoxicity assay using doxorubicin in same cells as in (B). Cells were treated with increasing concentration of doxorubicin, followed by colorimetric WST assay. IC₅₀ values were calculated by generating dose-response curve using GraphPad Prism.