

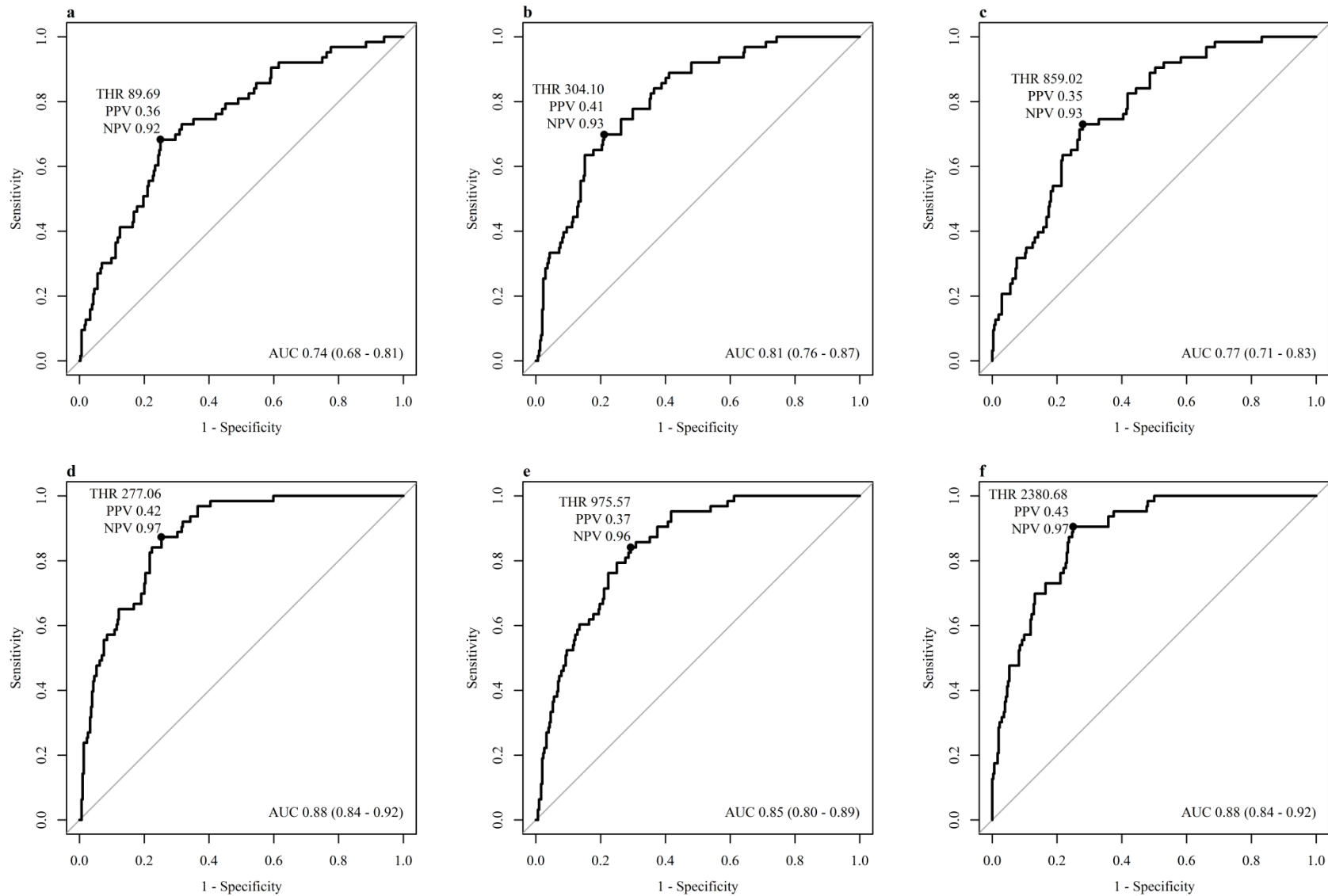
ESM table 1: Discrimination Between Individuals with Prevalent T2DM (n=60) or Prediabetes (n=122) and Either NGM (n=294) or Non-diabetes (n=416) by BCF-indices

	Non-T2DM versus T2DM	Rank	T2DM versus NGM	Rank	Prediabetes versus NGM	Rank
<i>Fasting BCF-indices</i>						
HOMA B1	60 (52, 68)	16	61 (53, 69)	15	52 (45, 59)	21
HOMA B2	65 (57, 73)	13-14	67 (58, 75)	14	53 (46, 59)	20
I <sub>0</sub> /G <sub>0</sub> ratio	59 (50, 67)	18	61 (52, 70)	16	57 (51, 64)	11
CP <sub>0</sub> /G <sub>0</sub> ratio	58 (51, 65)	20	60 (52, 68)	17	56 (50, 63)	14
<i>Early-phase BCF-indices</i>						
I <sub>30</sub> /I <sub>0</sub> ratio	85 (80, 90)	3	89 (85, 94)	3	67 (61, 72)	6
CP <sub>30</sub> /CP <sub>0</sub> ratio	88 (83, 92)	1	92 (88, 95)	1	71 (66, 76)	2
ΔI <sub>30</sub> /ΔG <sub>30</sub> ratio	79 (73, 84)	6	83 (77, 88)	6	66 (60, 72)	7
ΔI <sub>30</sub> /G <sub>30</sub> ratio	78 (72, 84)	7-8	82 (76, 88)	7-8	57 (51, 63)	12-13
ΔCP <sub>30</sub> /ΔG <sub>30</sub> ratio	84 (79, 89)	4	89 (84, 93)	4	73 (67, 78)	1
CIR <sub>30</sub>	87 (82, 91)	2	91 (87, 95)	2	68 (63, 73)	5
Stumvoll early-phase	68 (60, 77)	12	71 (63, 79)	12	54 (48, 61)	15-16
BIGTT-AIR <sub>0.30.120</sub>	74 (67, 81)	9	78 (71, 85)	9	57 (51, 63)	12-13
BIGTT-AIR <sub>0.60.120</sub>	73 (66, 80)	10	76 (69, 84)	10	62 (55, 68)	8
<i>Late-phase BCF-indices</i>						
Stumvoll second phase	65 (57, 73)	13-14	67 (58, 76)	13	54 (48, 61)	15-16
I <sub>120</sub> /I <sub>0</sub> ratio	54 (46, 61)	21	55 (48, 61)	21	69 (64, 75)	3-4
CP <sub>120</sub> /CP <sub>0</sub> ratio	60 (51, 68)	17	57 (48, 65)	19	53 (47, 58)	18-19
ΔI <sub>120</sub> /ΔG <sub>120</sub> ratio	58 (52, 64)	19	55 (49, 61)	20	54 (48, 59)	17
ΔCP <sub>120</sub> /ΔG <sub>120</sub> ratio	62 (57, 68)	15	58 (52, 64)	18	53 (47, 58)	18-19
CIR <sub>120</sub>	82 (78, 87)	5	84 (79, 88)	5	69 (64, 75)	3-4
<i>Overall BCF-indices</i>						
I <sub>AUC</sub> / G <sub>AUC</sub> ratio	71 (64, 78)	11	73 (66, 81)	11	60 (54, 66)	9
CP <sub>AUC</sub> / G <sub>AUC</sub> ratio	78 (72, 84)	7-8	82 (76, 88)	7-8	59 (53, 65)	10

T2DM, type 2 diabetes; NGM, normal glucose metabolism; Non-T2DM = normal glucose metabolism + prediabetes

Values represent ROC AUC in % (95%-confidence interval).

'Rank' reflects the order of ROC AUC estimates from high (1) to low (20). Differences between consecutively ranked ROC AUCs were not statistically significant.



ESM figure 1: ROC curves and characteristics of the three BCF indices and corresponding disposition indices that consistently ranked highest:

- a)  $\Delta I_{30}/\Delta G_{30}$
- b)  $\Delta CP_{30}/\Delta G_{30}$
- c)  $CIR_{30}$
- d)  $\Delta I_{30}/\Delta G_{30}$  DI
- e)  $\Delta CP_{30}/\Delta G_{30}$  DI
- f)  $CIR_{30}$  DI

AUC, Area under the Receiver Operating Curve (95% CI); THR, threshold value for the specific BCF index (Youden index); PPV, positive predicted value; NPV, negative predicted value  
The point on the ROC curve represents the THR.