

Supplementary Information for
**Effect of individual food preferences on oscillatory
brain activity**

Nachie Tashiro^a, Hisato Sugata^b, Takashi Ikeda^c, Kojiro Matsushita^d,
Masayuki Hara^e, Kenji Kawakami^b, Minoru Fujiki^a, Keisuke Kawakami^b

^aDepartment of Neurosurgery, Graduate School of Medicine, Oita University, Oita, Japan

^bFaculty of Welfare and Health Science, Oita University, Oita, Japan

^cResearch Center for Child Mental Development, Kanazawa University, Kanazawa, Japan

^dDepartment of Mechanical Engineering, Gifu University, Gifu, Japan

^eGraduate School of Science and Engineering, Saitama University, Saitama, Japan

Contents:

Supplementary figures 1-2

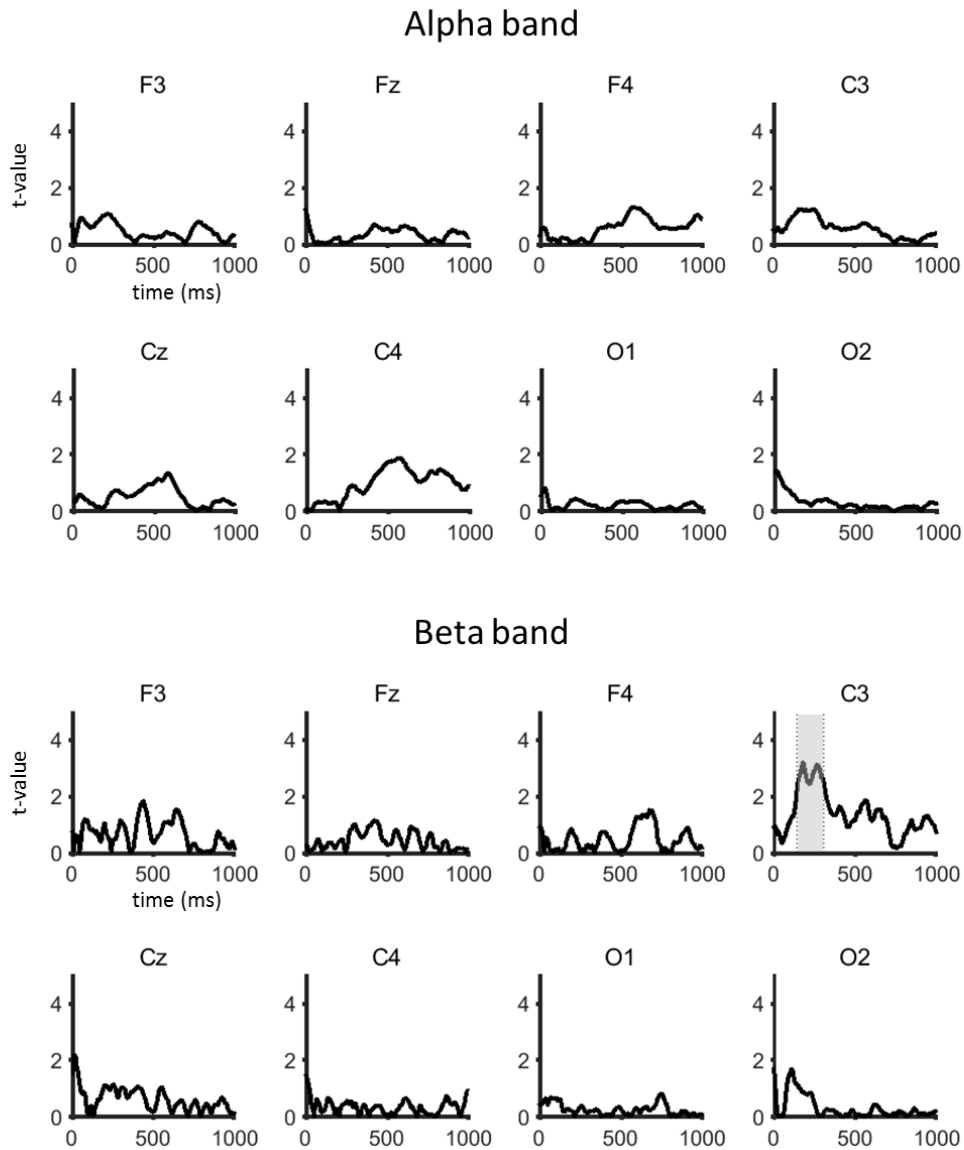


Figure S1. T values at each time point in the alpha and beta bands during the observation of favorite foods (FF) and disliked foods (DF). 0 ms corresponds to onset of food visual stimulus. Gray shaded area indicates time points of significant differences between FF and DF ($p < 0.05$).

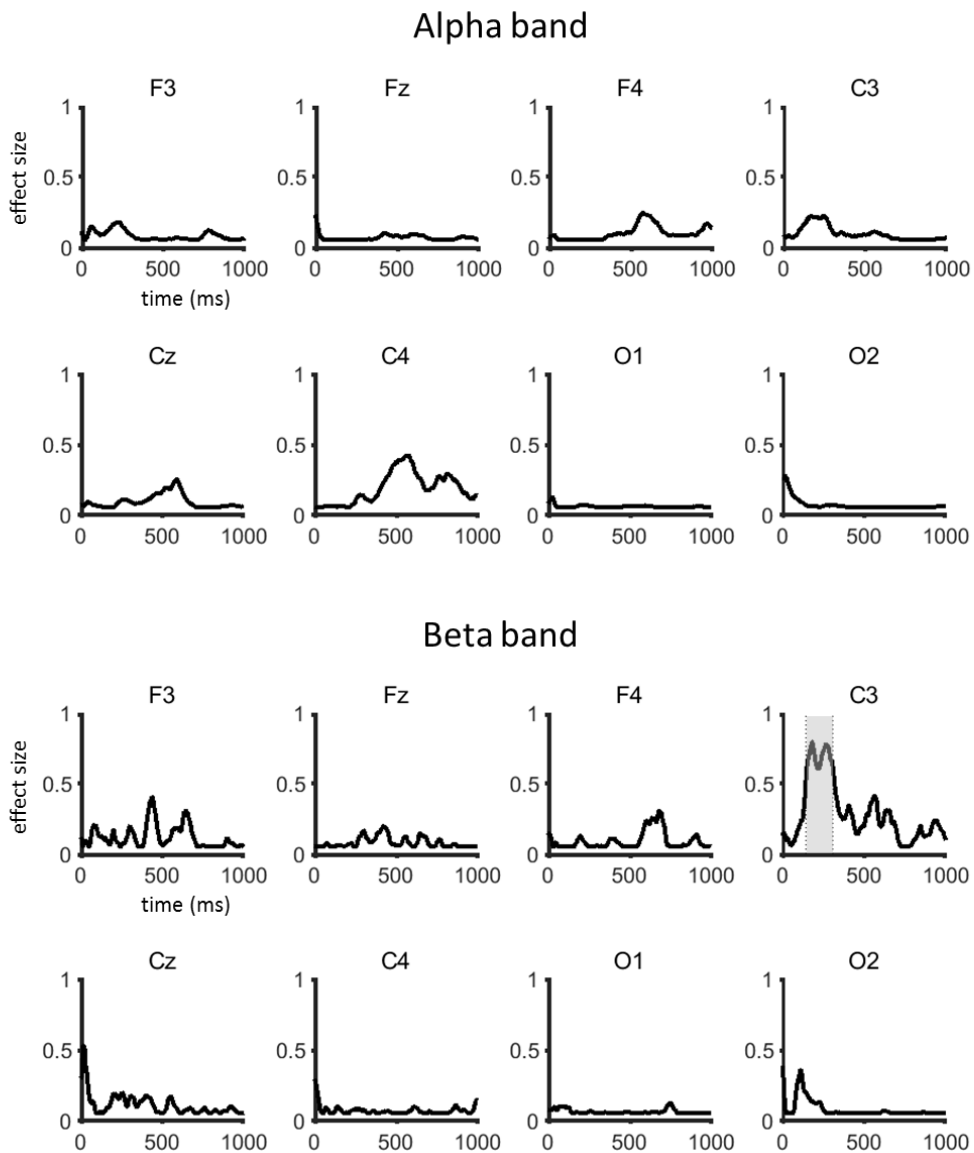


Figure S2. Effect size in each time point in the alpha and beta bands during the observation of favorite foods (FF) and disliked foods (DF). 0 ms corresponds to onset of food visual stimulus. Gray shaded area indicates time points of significant differences between FF and DF ($p < 0.05$).