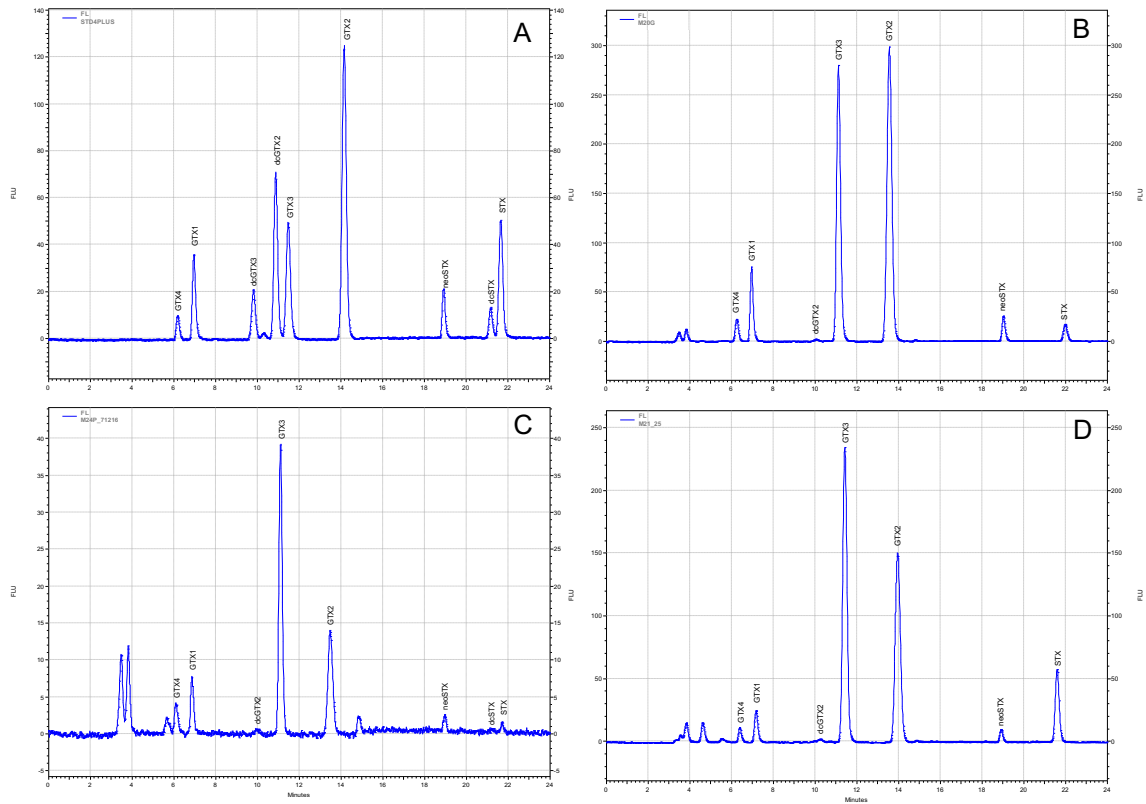


Supplementary Material



S1. Selected chromatograms of Paralytic Shellfish Toxins (PST) in reference material (A), digestive gland (B), foot (C) and muscle (D).

S2. Limits of detection (LOD) and quantification (LOQ) for each toxin in *Mesodesma donacium*

TOXIN	LOD mg STX diHCl kg ⁻¹	LOQ mg STX diHCl kg ⁻¹
GTX4	0.031	0.09
GTX1	0.055	0.17
dcGTX3	0.005	0.01
dcGTX2	0.005	0.02
GTX3	0.009	0.03
GTX2	0.003	0.01
NEO	0.042	0.13
dcSTX	0.051	0.15
STX	0.017	0.05