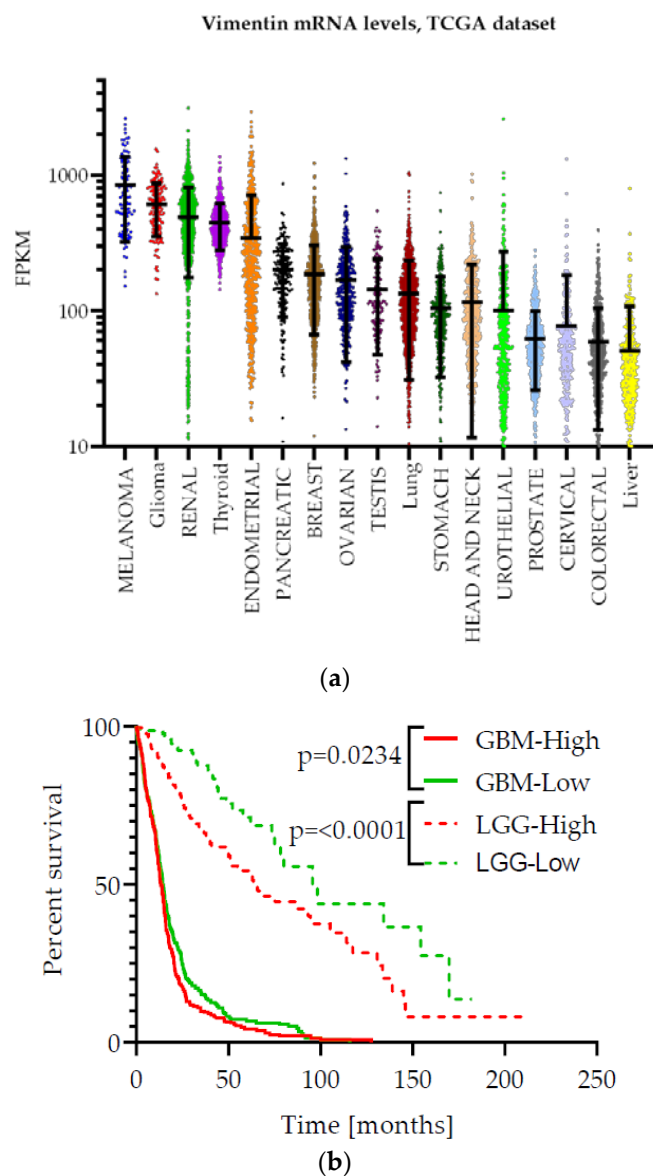
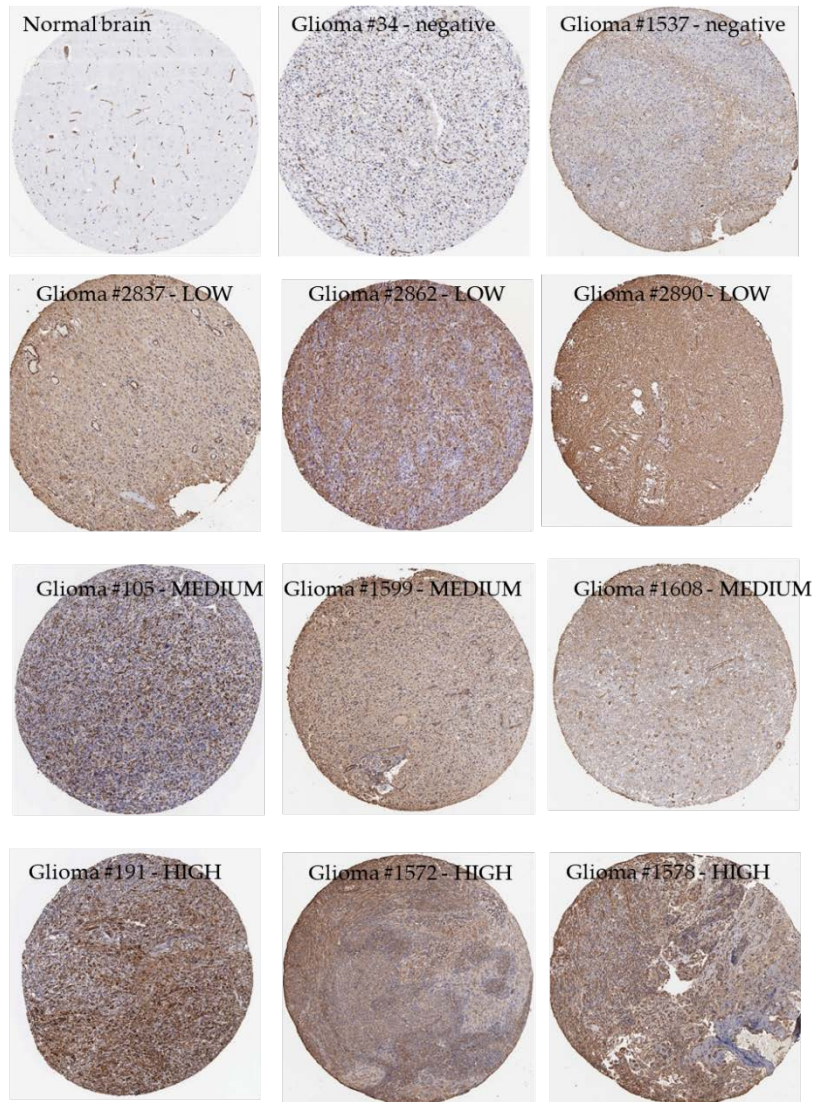


## Supplementary Materials: Proteomic analysis implicates vimentin in glioblastoma cell migration

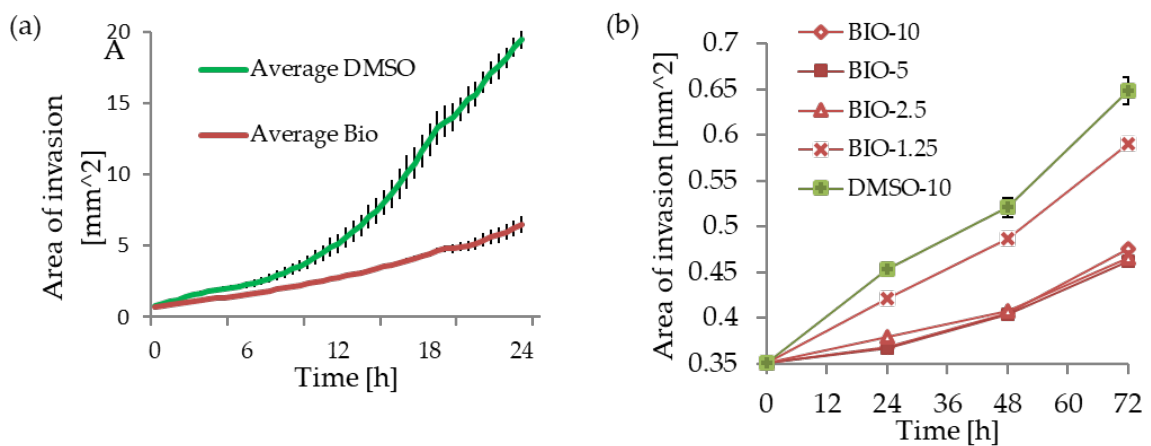
Michal O. Nowicki, Josie L. Hayes, E. Antonio Chiocca and Sean E. Lawler



**Figure S1.** (a) The mRNA levels of vimentin collected from the TCGA database, Levels of transcript are presented as Fragments Per Kilobase of exon per Million reads (FPKM). (b) The Kaplan-Meier survival plots for TCGA datasets: GBM (combined platforms Affymetrix, Agilent and RNAseq) and combined data for Low Grade Gliomas (LGG).



**Figure S2.** The small subset of tissues immunostained (Sigma cat# HPA001762) for vimentin and labeled with DAB (3,3'-diaminobenzidine). Data from The Human Protein Atlas [1], www.proteinatlas.org.



**Figure S3.** LiCl and BIO Treated GBM cells reduces cell motility. (a) Time lapse version of transmembrane migration assay performed with FluorBlock inserts, U251pCDH cell line. (b) Spheroid migration invasion in collagen gel, G30pCDH.

## References

1. Uhlén, M.; Fagerberg, L.; Hallström, B.M.; Lindskog, C.; Oksvold, P.; Mardinoglu, A.; Sivertsson, Å.; Kampf, C.; Sjöstedt, E.; Asplund, A.; et al. Proteomics. Tissue-based map of the human proteome. *Science* **2015**, *347*, 1260419.



© 2019 by the authors. Licensee MDPI, Basel, Switzerland. This article is an open access article distributed under the terms and conditions of the Creative Commons Attribution (CC BY) license (<http://creativecommons.org/licenses/by/4.0/>).