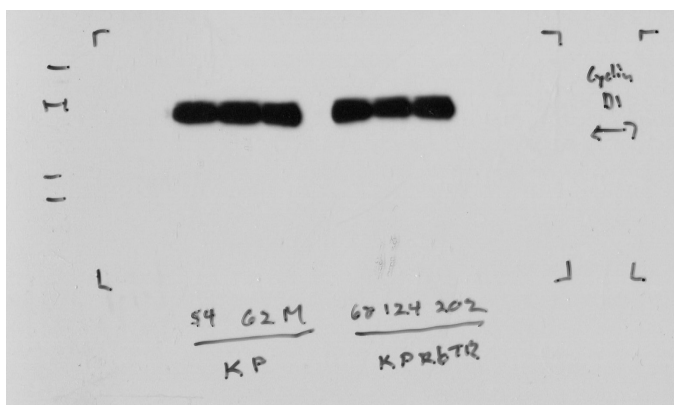
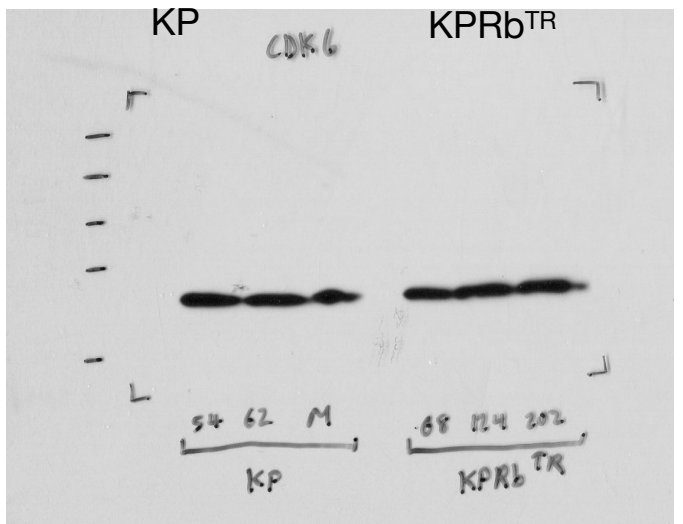
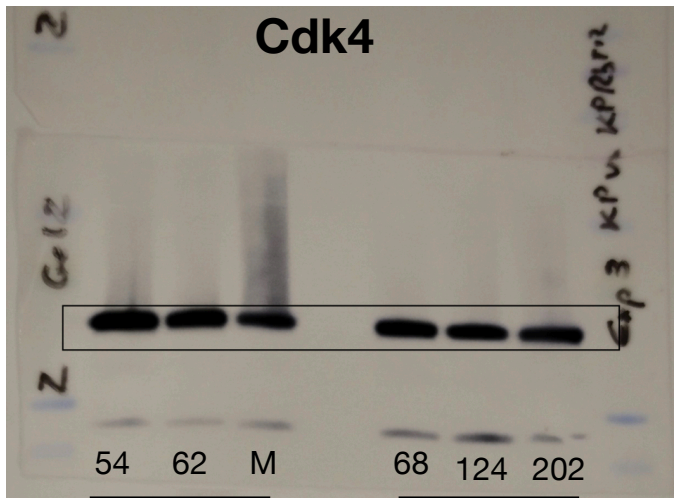
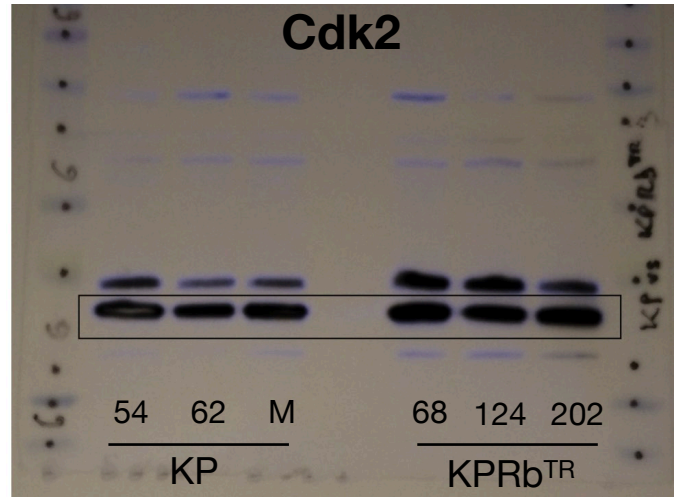
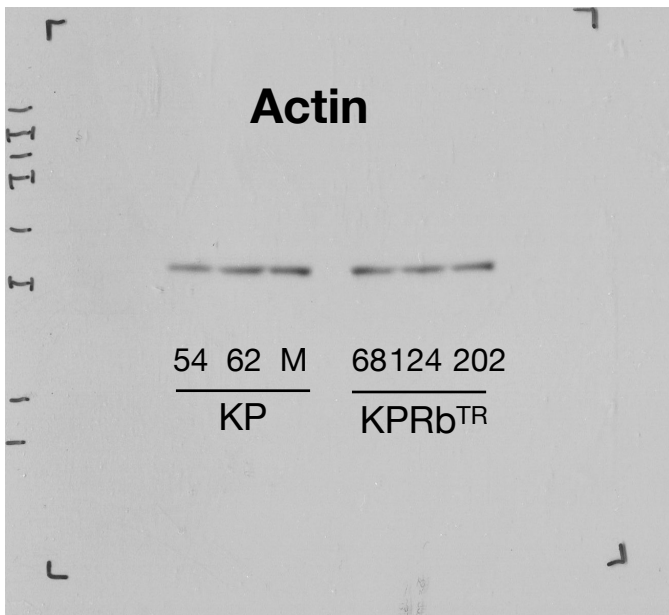
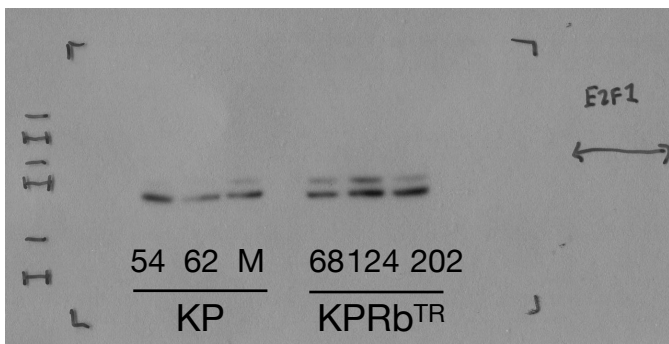
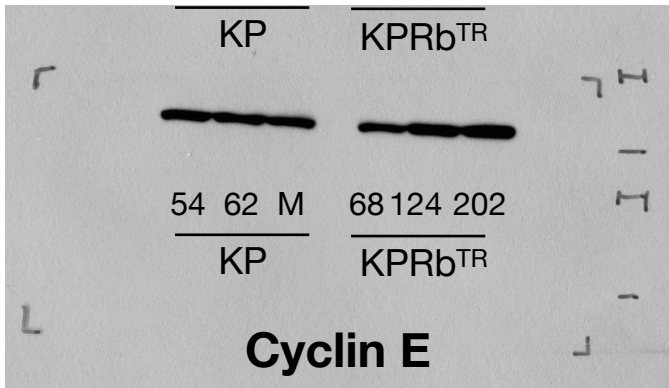
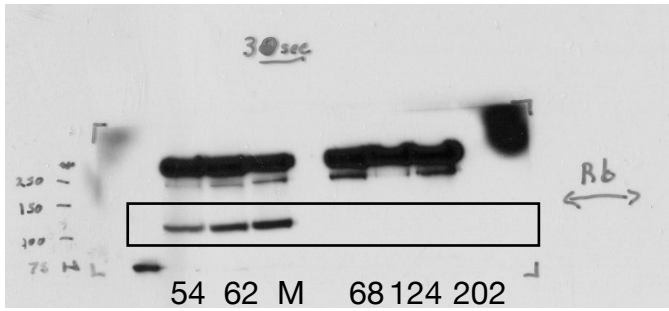


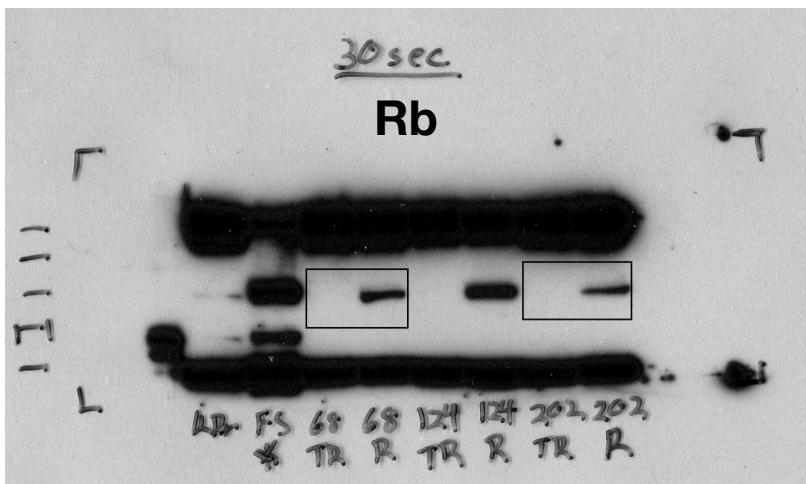
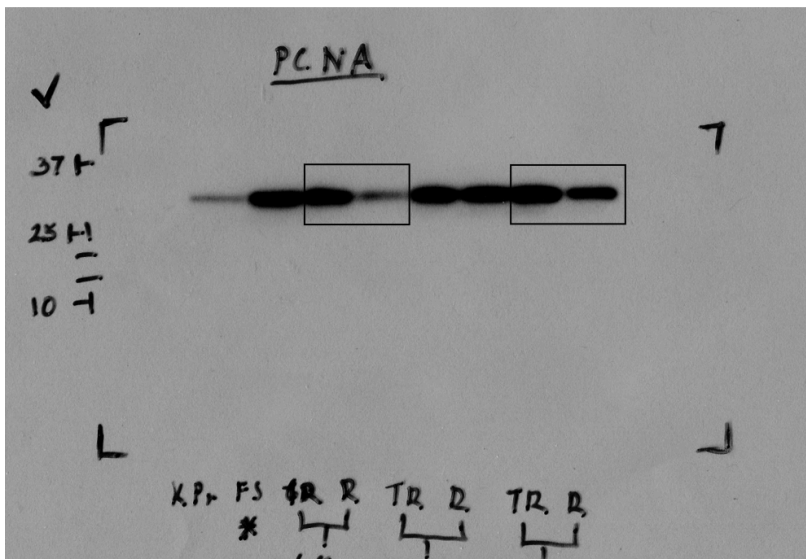
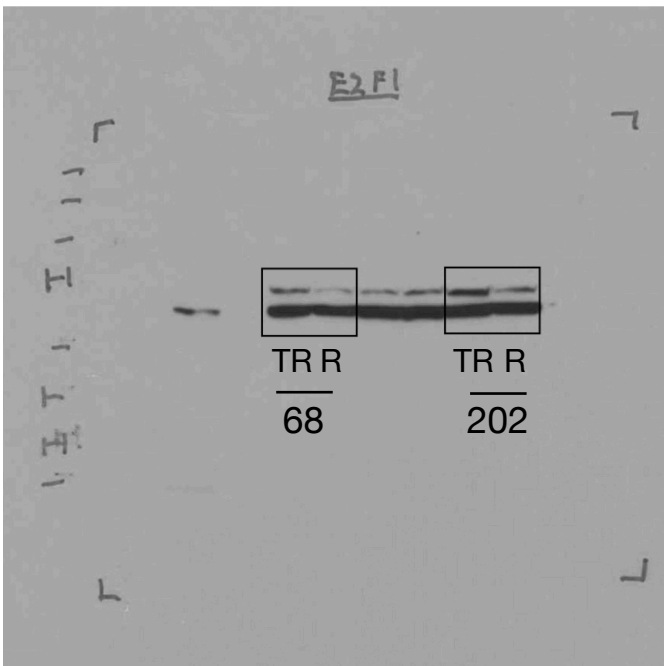
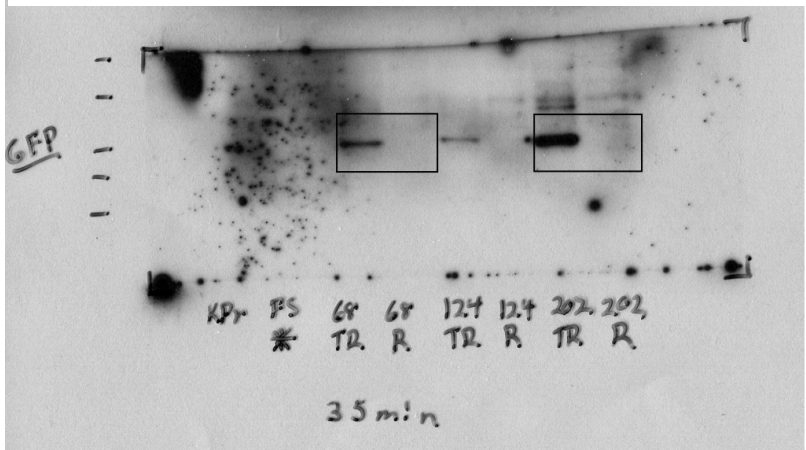
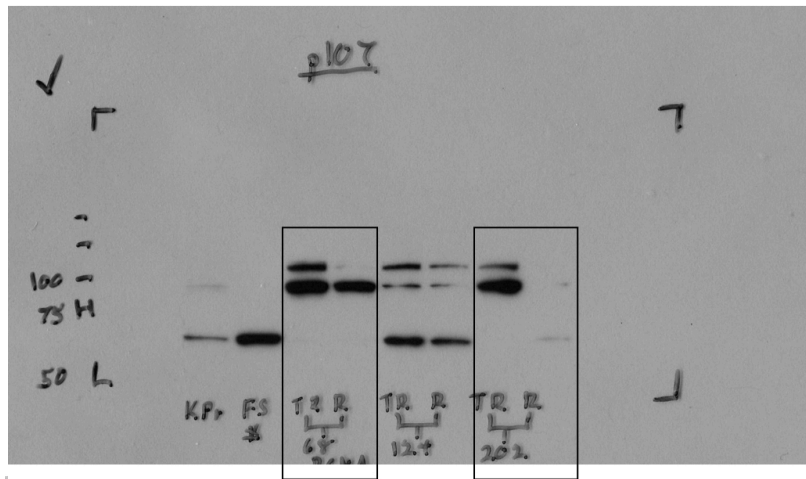
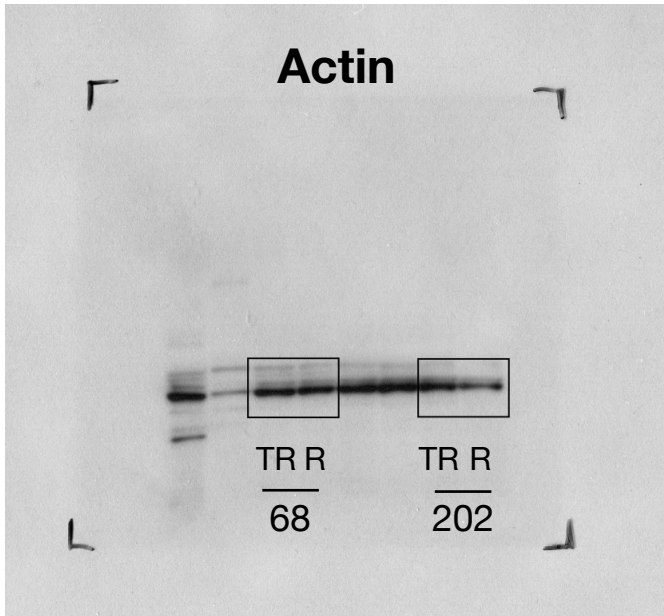
Raw data associated with Fig. 1e,f,g,h,i; Fig. 2b,c,d,e,g,i,j; Fig. 3a,b,c,e,f,g; Fig. 4c,e,f,g,h; ED Fig. 2d,e,f; ED Fig. 3c,d; ED Fig. 4b,d,e,f,g,h,i,k; ED Fig. 5a,b,c,d,e,f,g,h,j,m; ED Fig. 6c,d; ED Fig. 7d,f,g,i; ED Fig. 8a,d; and ED Fig. 9b,c,e are available in the Supplementary Information section.

Raw images from Western Blots are displayed in this document. Gels with multiple bands per lane or in which specific lanes were selected show an indication of how the gels were cropped for the final figure. For Extended Fig. 2b, Extended Fig. 2c, Extended Fig. 5i, Extended Fig. 5k and Extended Fig. 7e, controls were run in separate gels as sample processing controls; for Extended Fig. 7a, loading controls for each gel are provided in the raw data.

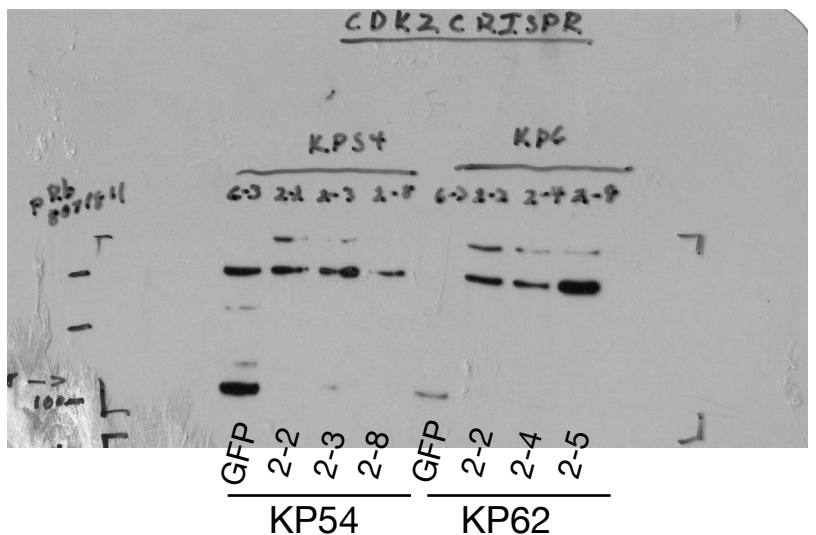
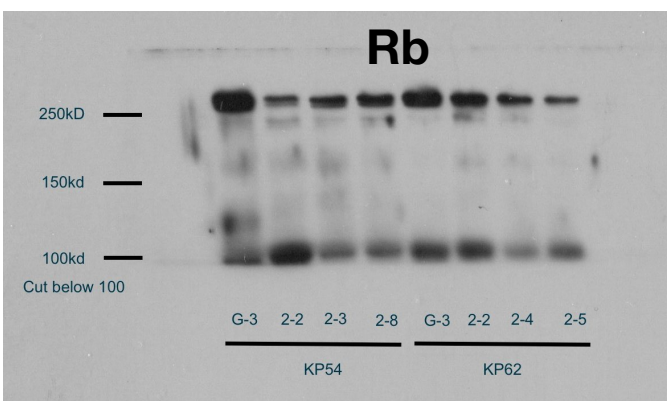
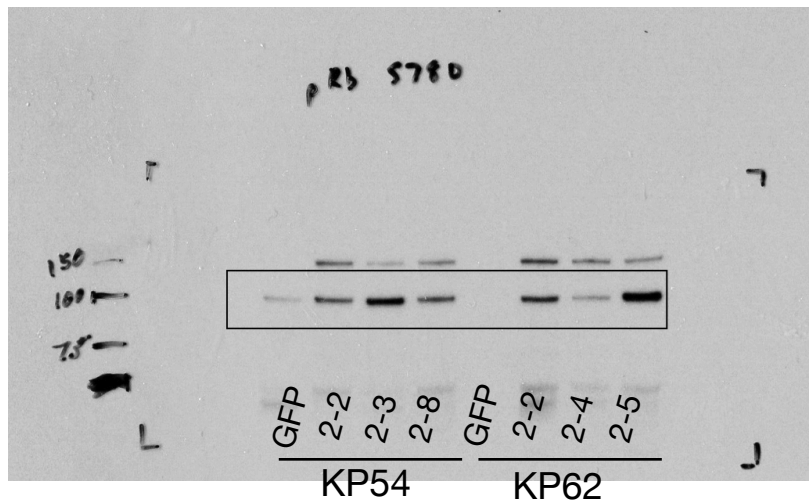
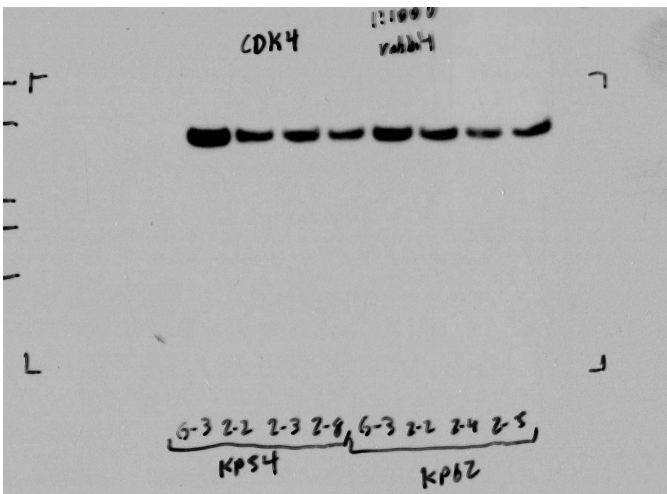
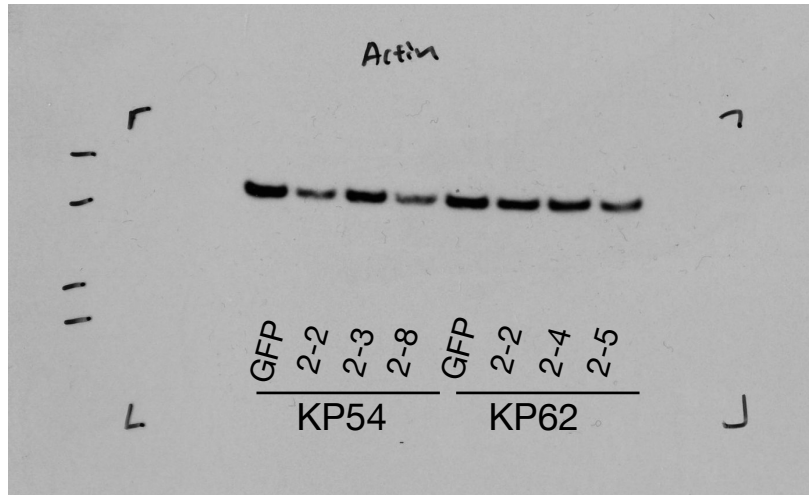
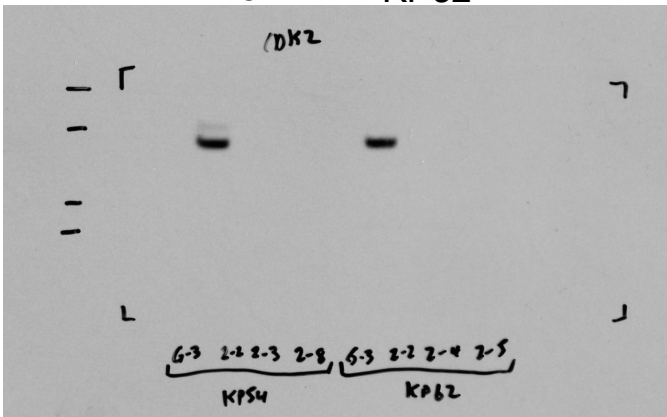
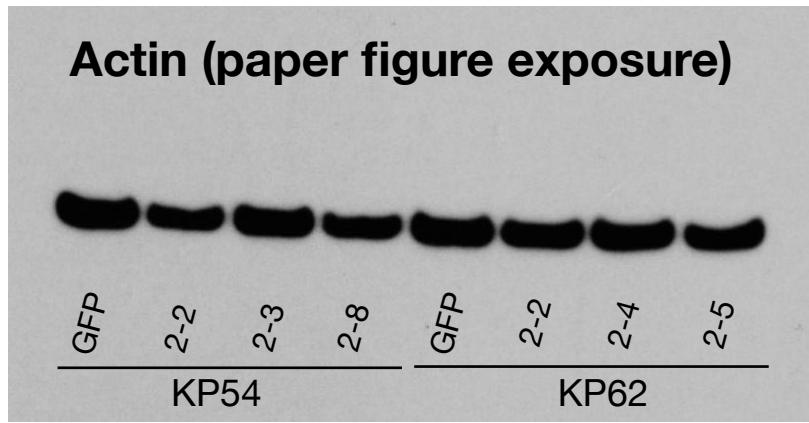
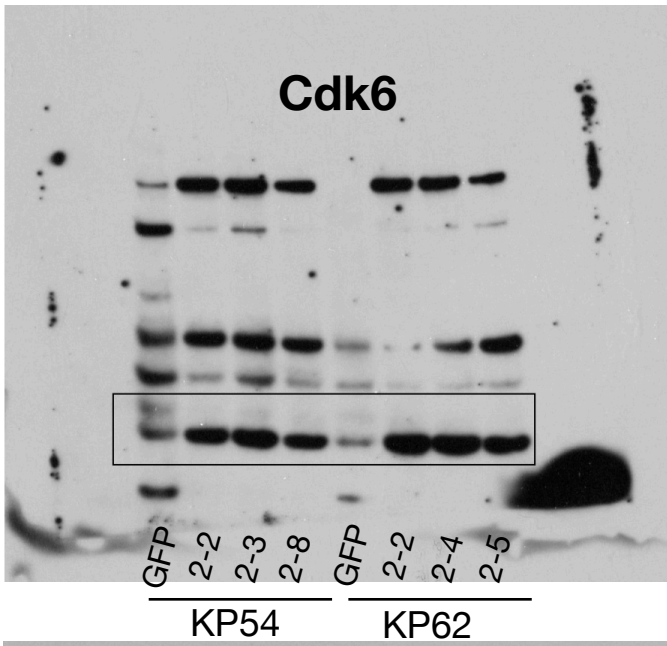
Extended Figure 2b



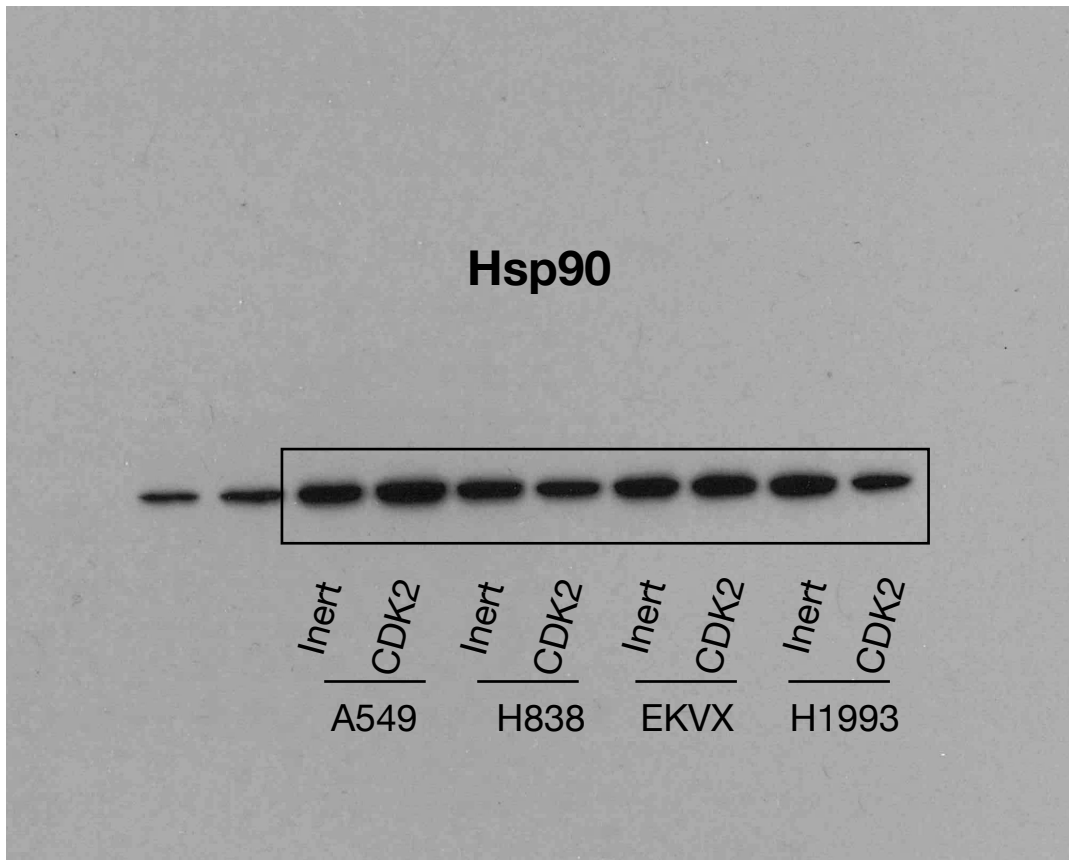
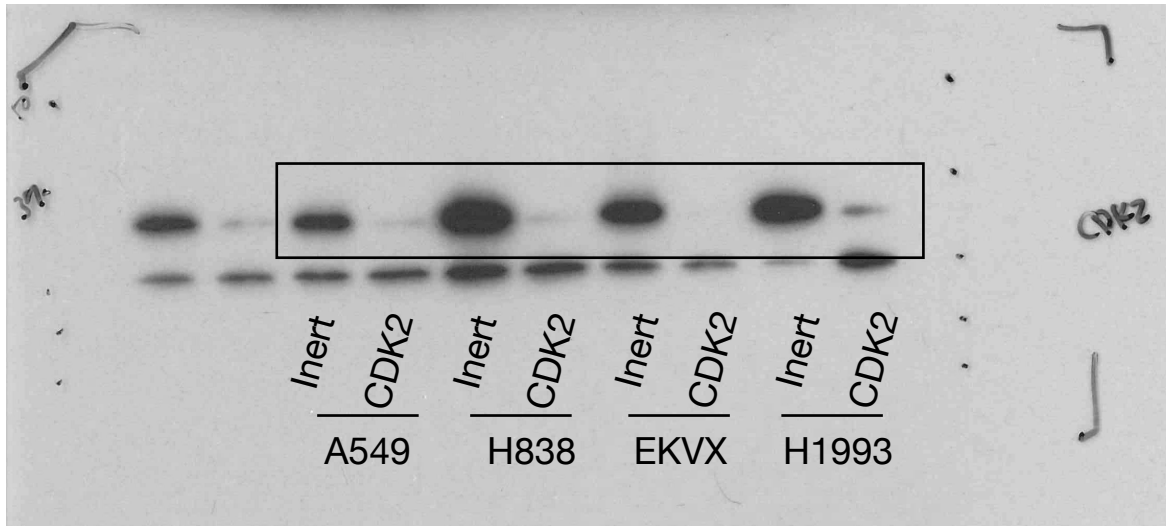
Extended Figure 2c



Extended Figure 5i

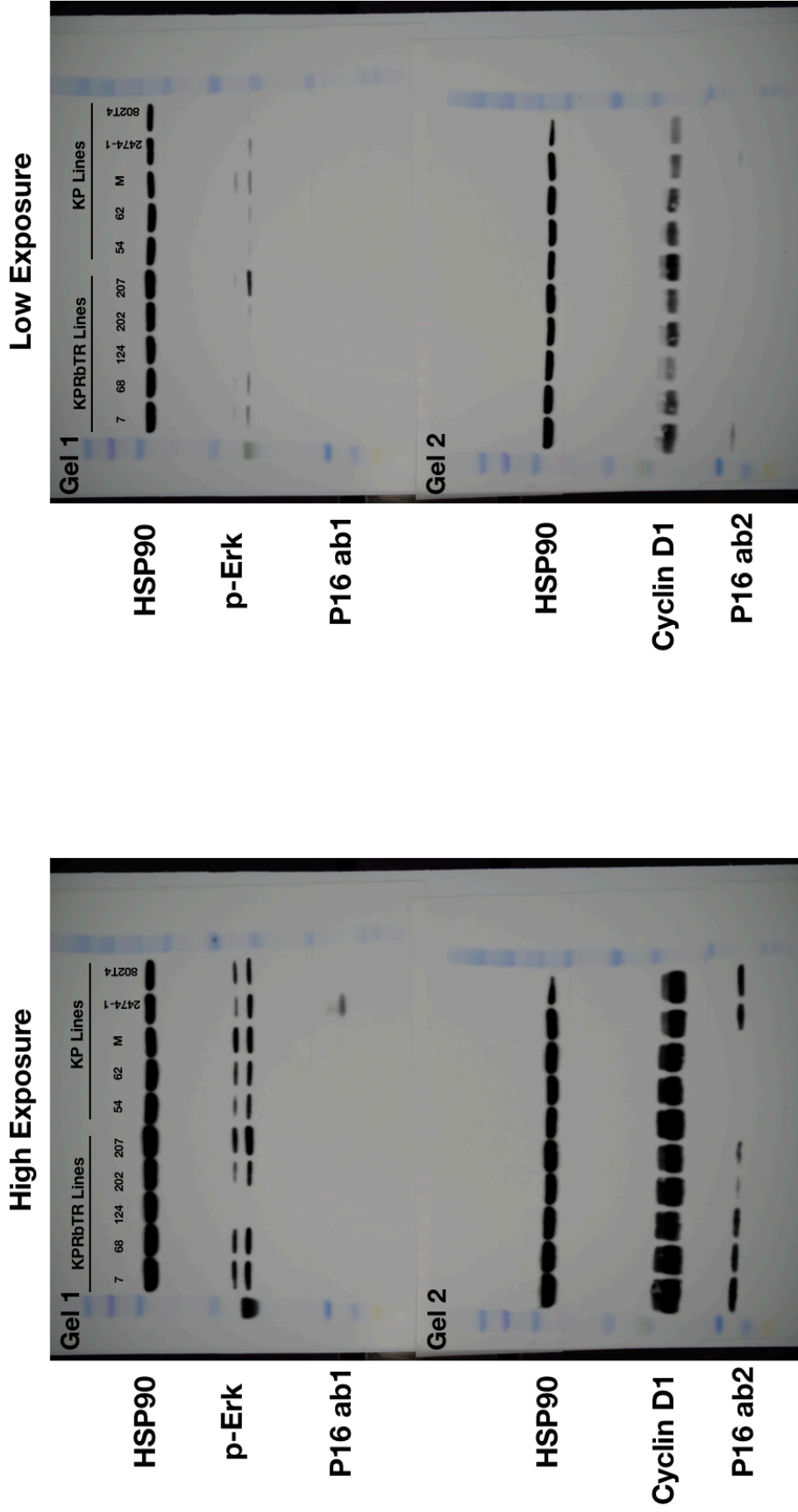


Extended Figure 5k

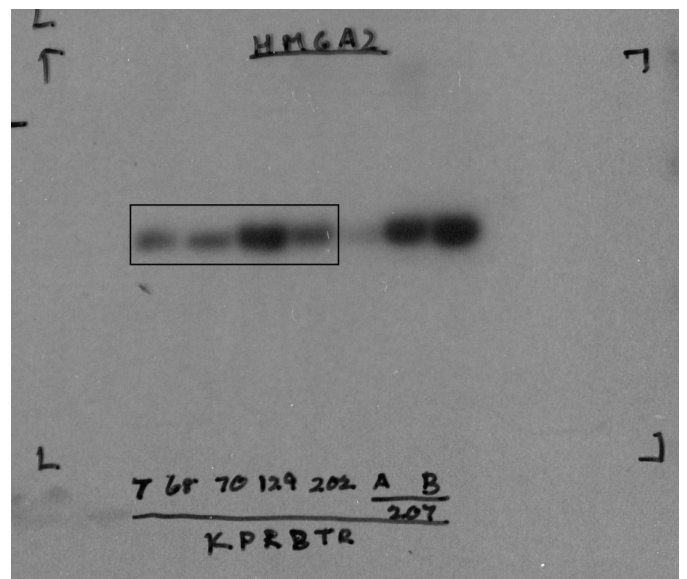
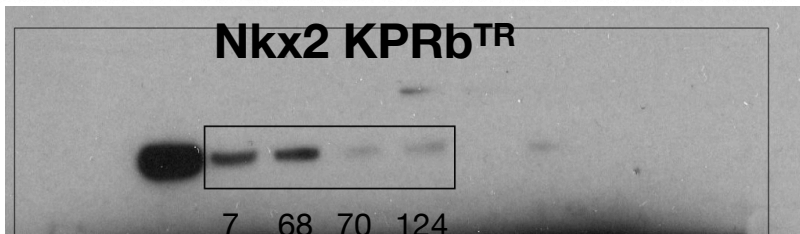
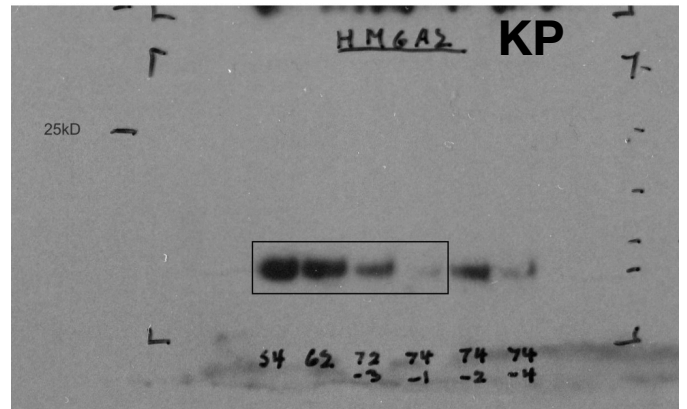
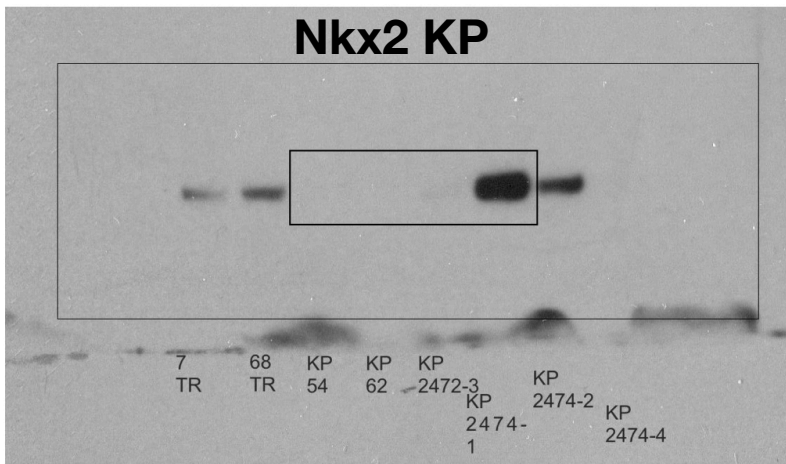
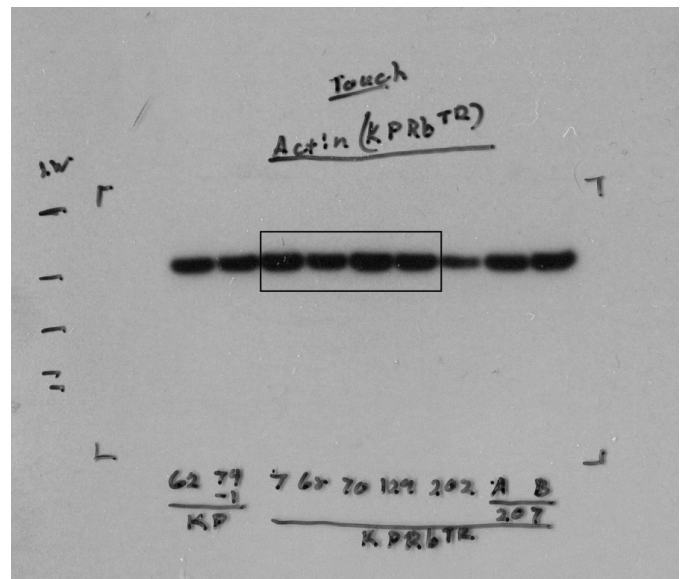
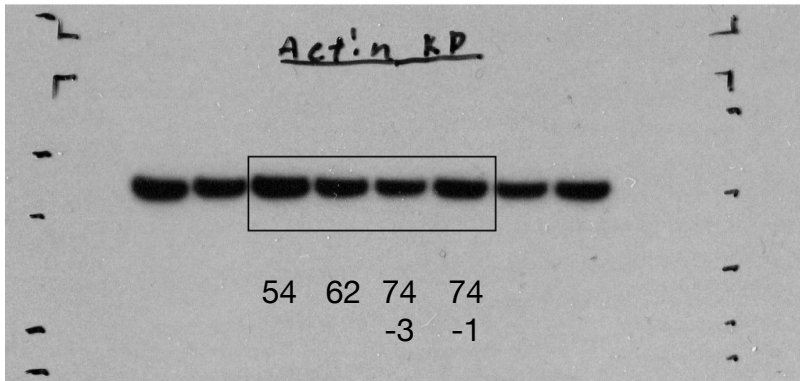


p16 Westerns KP vs KPRbTR Cell lines

Extended Figure 7a



Extended Figure 7e



Rb

