

Supplementary Material

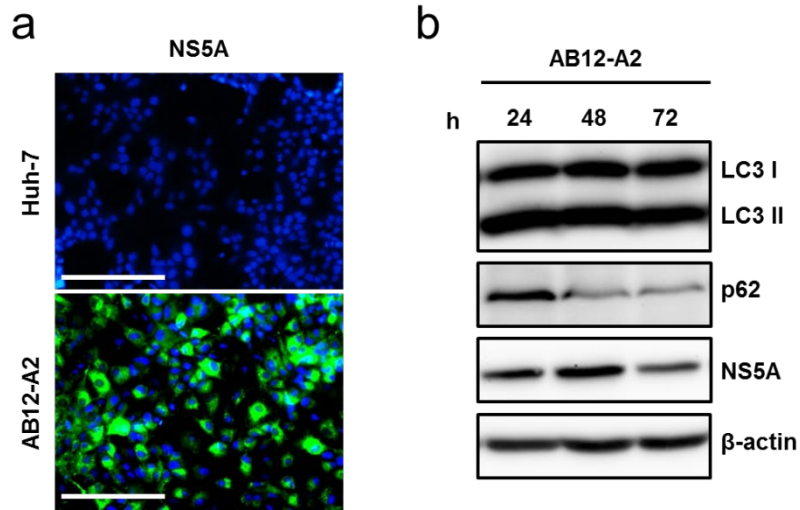


Figure S1. AB12-A2 cells express NS5A and induce autophagic flux. (a) HCV subgenomic replicon AB12-A2 cells were seeded in 24-well plates and stained with anti-NS5A antibody. The parental naïve Huh-7 cells were included as control and Hoechst stain was used to demarcate the nuclei. Magnification = 200X; scale bar = 200 μ m. (b) AB12-A2 replicon cells were seeded in 6-well plates for the indicated time-points. The lysates were subsequently harvested and subjected to Western blot analysis for the indicated proteins.

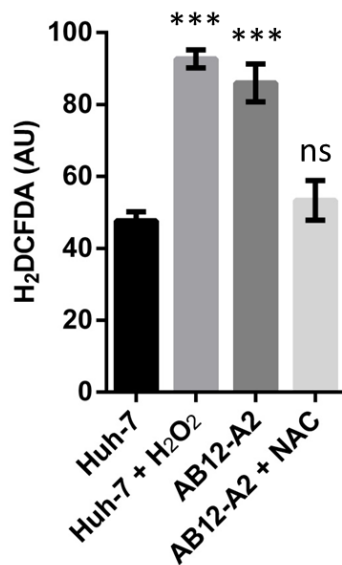


Figure S2. AB12-A2 cells induce ROS production. Huh-7 and the AB12-A2 replicon cells were seeded in 6-well plates followed by H₂DCFDA staining and flow cytometry analysis for ROS production with procedures and treatments carried out as in Fig. 5a. NAC = 20 mM; H₂O₂ = 1 mM. Asterisks (*) denote statistical significance compared with control (Huh-7 only): *** $p < 0.001$; ns = not significant.