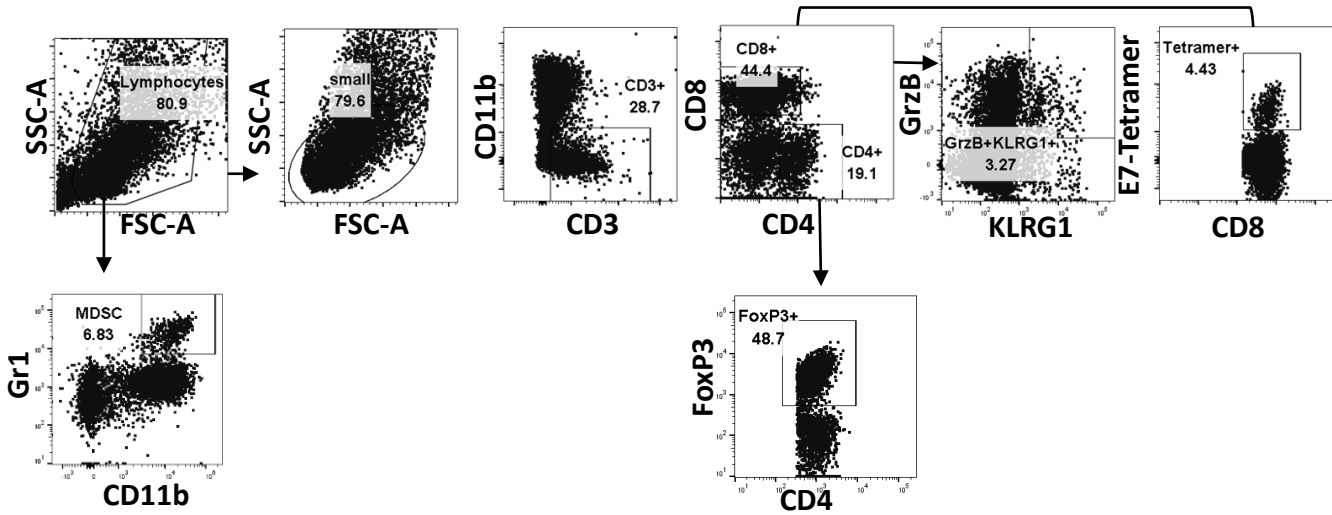


Supplementary Fig. S1



Supplementary Fig S1. **Gating strategy to analyze TILs after immunotherapy combinations.** TILs were stained with a 16-color panel of fluorescently labeled antibodies to detect the activated cytotoxic CD8⁺ T cells (KLRG1⁺, GrzB⁺), E7-specific CD8⁺ T cells, Tregs (CD4⁺, FoxP3⁺), and MDSCs (CD11b⁺, Gr1⁺).