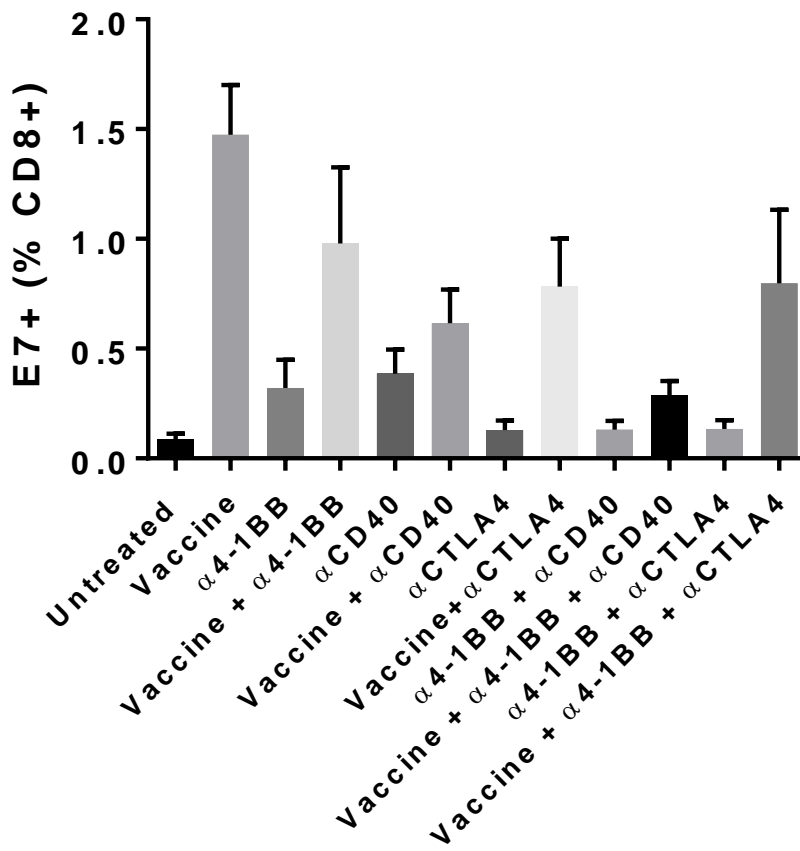
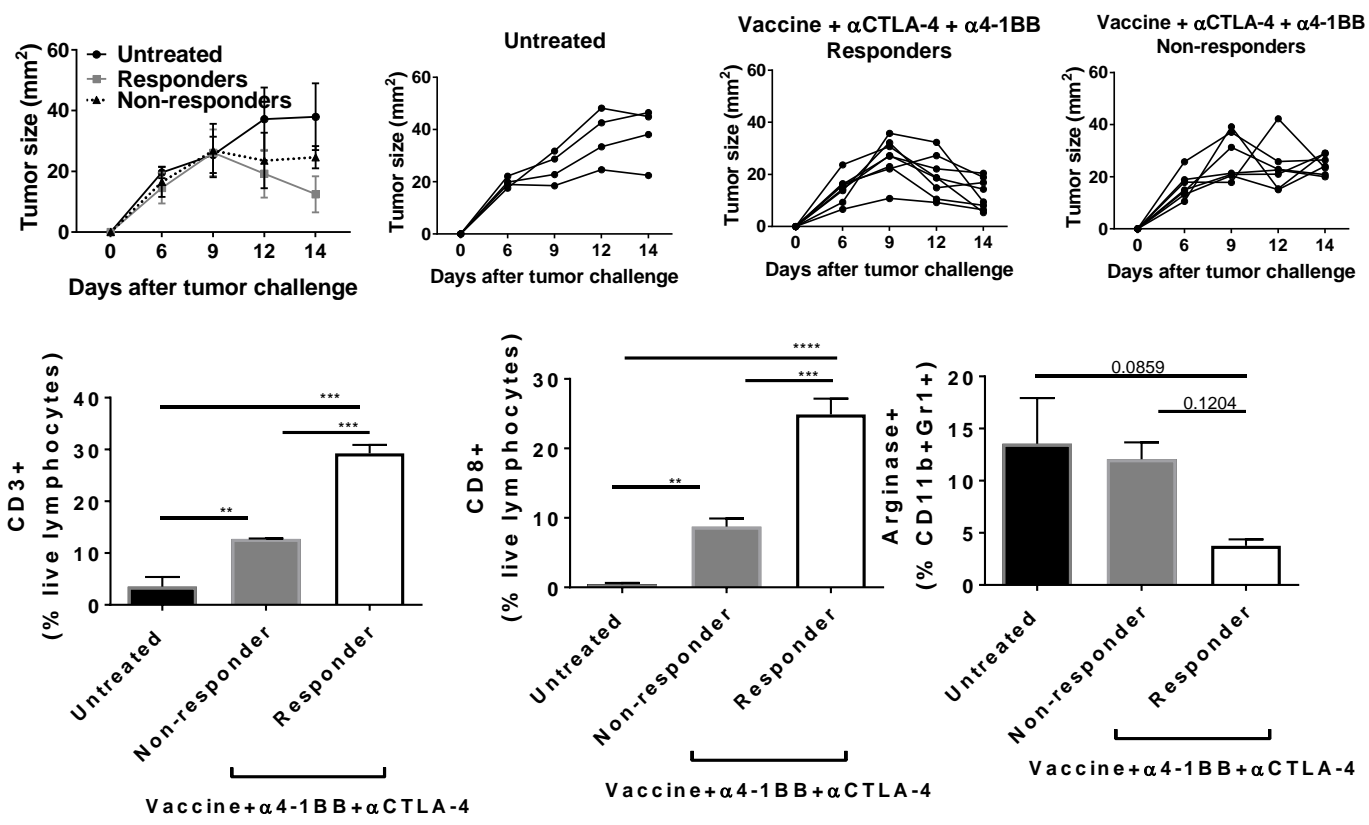


Supplementary Fig. S7



Supplementary Fig S7. **HPV-specific T cells in the blood after vaccine immunotherapy.** Blood samples from mice subcutaneously injected with mEER tumor cells and either untreated or treated with different checkpoint antibodies and/or the HPV peptide vaccine were collected at day 16 after tumor challenge. Data are represented as mean \pm SEM (n = 3 – 7 mice/group).

Supplementary Fig. S8



Supplementary Fig S8. Immune correlates for treatment resistance. Mice treated with vaccine, αCTLA-4, α4-1BB were divided according to their responsiveness to treatment (decrease in tumor growth at day 14). Non-responding tumors showed stable or increase in tumor growth at day 14. TILs were isolated and at day 15 and 2 – 4 tumors were pooled to quantify the percentage of CD3+, CD8+ and Arginase+ MDSCs (n = 2 – 3).