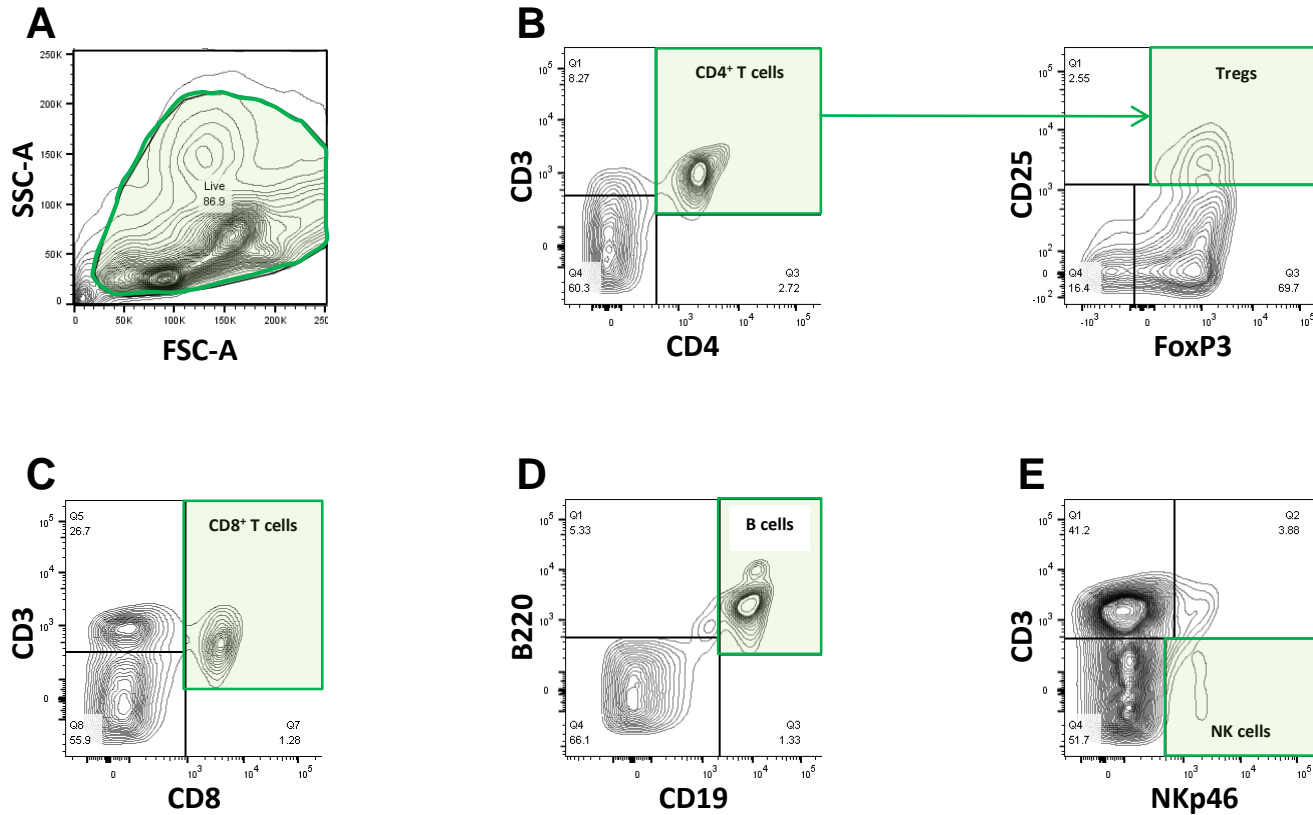
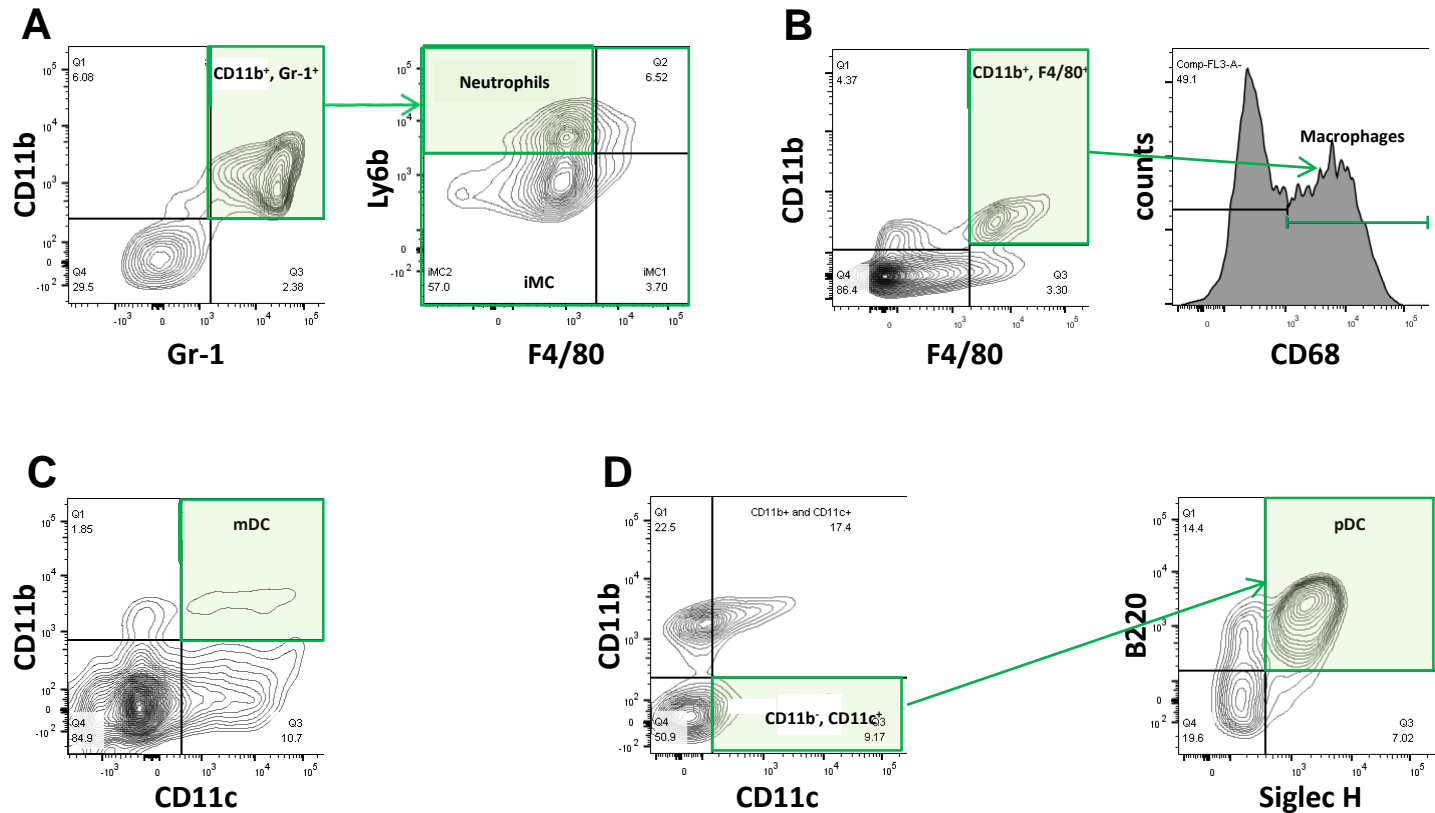


# Supplementary Figure 1



**Figure S1: Representative Flow gating for live cells and lymphocyte populations.** (A) SSC-A vs. FSC-A gating for live cells. (B) CD3<sup>+</sup>,CD4<sup>+</sup> for CD4 T cells then gated for CD25<sup>+</sup>,FoxP3<sup>+</sup> Regulatory T cells. (C) CD3<sup>+</sup>, CD8<sup>+</sup> for CD8 T cells (D) B220<sup>+</sup>, CD19<sup>+</sup> for B cells (E) CD3<sup>-</sup>, NKp46<sup>+</sup> for NK cells.

## Supplementary Figure 2



**Figure S2: Representative Flow gating for Neutrophils, Macrophages and Dendritic populations.** (A) CD11b<sup>+</sup>, GR-1<sup>+</sup> cells then gated for Ly6b<sup>+</sup>, F4/80<sup>-</sup> Neutrophils and for Ly6b<sup>-</sup>, F4/80<sup>-</sup>; Ly6b<sup>-</sup>, F4/80<sup>+</sup>; Ly6b<sup>+</sup>, F4/80<sup>+</sup> iMCs. (B) CD11b<sup>+</sup>, F4/80<sup>+</sup> cells then gated for CD68<sup>+</sup> Macrophages. (C) CD11b<sup>+</sup>, CD11c<sup>+</sup> for mDC. (D) CD11b<sup>-</sup>, CD11c<sup>+</sup> cells then gated for B220<sup>+</sup>, Siglec H<sup>+</sup> pDC.

# Supplementary Figure 3

Source of Variation	P value
Interaction	0.0800
Row Factor	<0.0001
Column Factor	<0.0001

Source of Variation	P value
Interaction	<0.0001
Row Factor	0.0001
Column Factor	<0.0001

Source of Variation	P value
Interaction	0.1607
Row Factor	0.0083
Column Factor	<0.0001

Source of Variation	P value
Interaction	0.0341
Row Factor	0.0026
Column Factor	<0.0001

Source of Variation	P value
Interaction	<0.0001
Row Factor	0.0017
Column Factor	0.7106

Source of Variation	P value
Interaction	0.0003
Row Factor	0.2491
Column Factor	<0.0001

Source of Variation	P value
Interaction	0.0051
Row Factor	0.0261
Column Factor	<0.0001

Source of Variation	P value
Interaction	0.7802
Row Factor	0.0901
Column Factor	<0.0001

Source of Variation	P value
Interaction	0.0084
Row Factor	<0.0001
Column Factor	<0.0001

Source of Variation	P value
Interaction	<0.0001
Row Factor	<0.0001
Column Factor	0.0001

Source of Variation	P value
Interaction	0.0008
Row Factor	<0.0001
Column Factor	<0.0001

Source of Variation	P value
Interaction	<0.0001
Row Factor	0.0150
Column Factor	<0.0001

Source of Variation	P value
Interaction	<0.0001
Row Factor	0.0003
Column Factor	<0.0001

Source of Variation	P value
Interaction	0.0170
Row Factor	0.0025
Column Factor	<0.0001

Source of Variation	P value
Interaction	0.5580
Row Factor	0.0993
Column Factor	<0.0001

Source of Variation	P value
Interaction	<0.0001
Row Factor	<0.0001
Column Factor	<0.0001

Source of Variation	P value
Interaction	0.0278
Row Factor	<0.0001
Column Factor	<0.0001

Source of Variation	P value
Interaction	0.1121
Row Factor	0.0024
Column Factor	<0.0001

Source of Variation	P value
Interaction	0.2019
Row Factor	0.0001
Column Factor	<0.0001

Source of Variation	P value
Interaction	<0.0001
Row Factor	<0.0001
Column Factor	<0.0001

**Figure S3: Overall statistics describing the source of variation.** (A) CD4 T cells bone. (B) CD4 T cells spleen. (C) CD8 T cells bone. (D) CD8 T cells spleen. (E) T regs bone. (F) T regs spleen. (G) B cells bone. (H) B cells spleen. (I) NK cells bone. (J) NK cells spleen. (K) iMC bone. (L) iMC spleen. (M) Macrophages bone. (N) Macrophages spleen. (O) mDC bone. (P) mDC spleen. (Q) pDC bone. (R) pDC spleen. (S) Neutrophils bone. (T) Neutrophils spleen