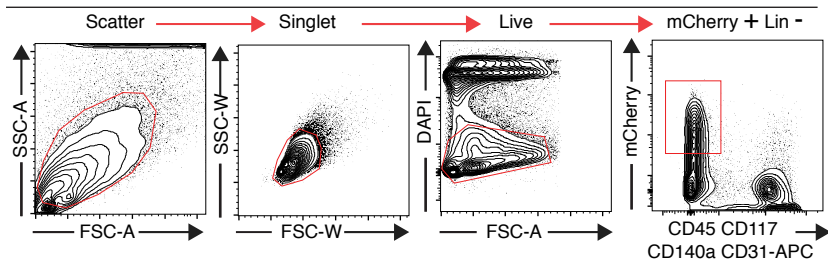
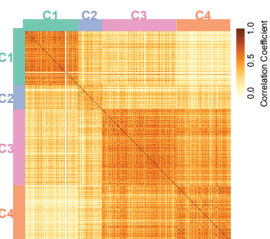
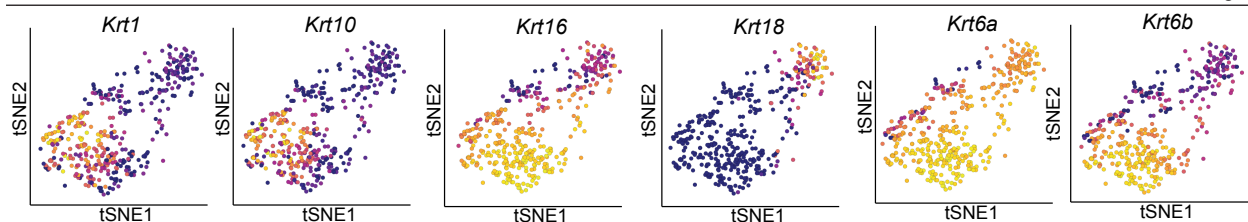
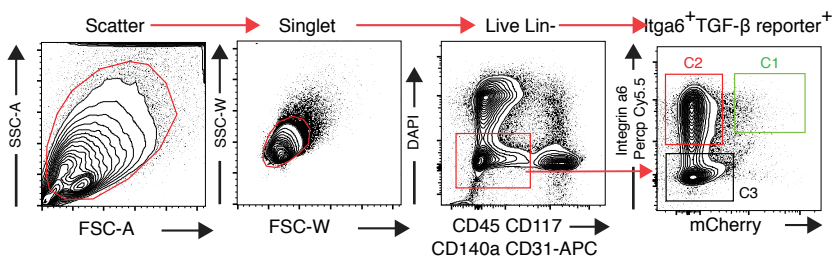
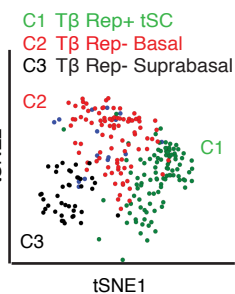
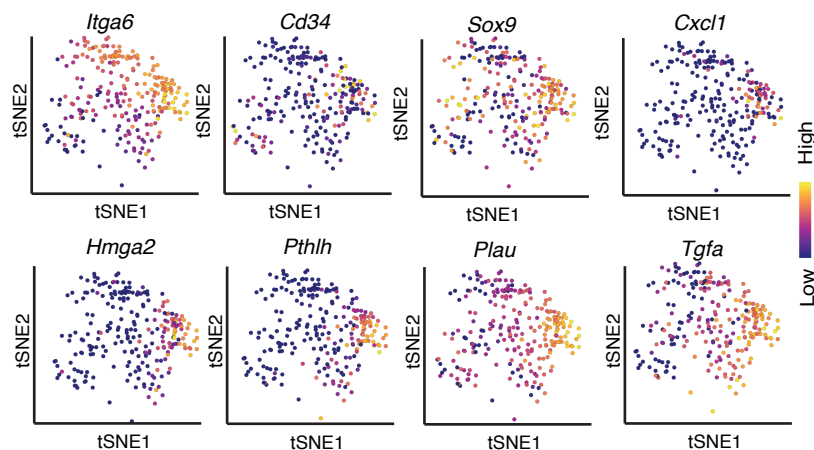


**A** Gating Strategy to Purify mCherry+ Tumor Cells for Single Cell Analysis**B** Single Cell RNA-seq Analyses of mCherry+ Tumor Cells After ACT**C** SCC Differentiation Markers are Enriched in C2, C3 And C4 Clusters**D** Gating Strategy to Purify TGFβ-Responding tSCs**E****F** Tumor Stem Cell Features in C1 Cluster (a6<sup>hi</sup> TGFβ reporter<sup>+</sup> tSCs)**G** No Immune Signatures in any Cluster