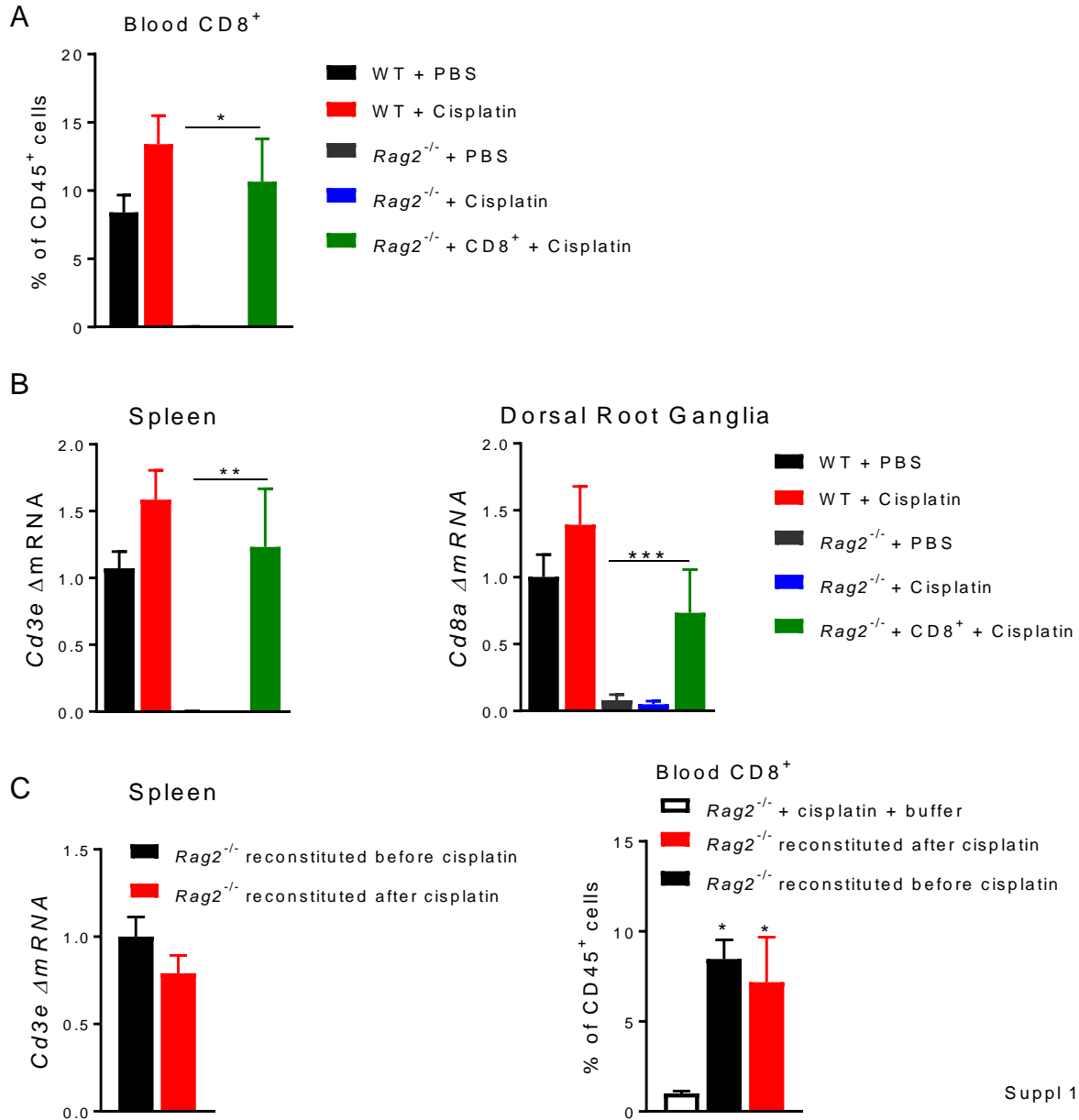


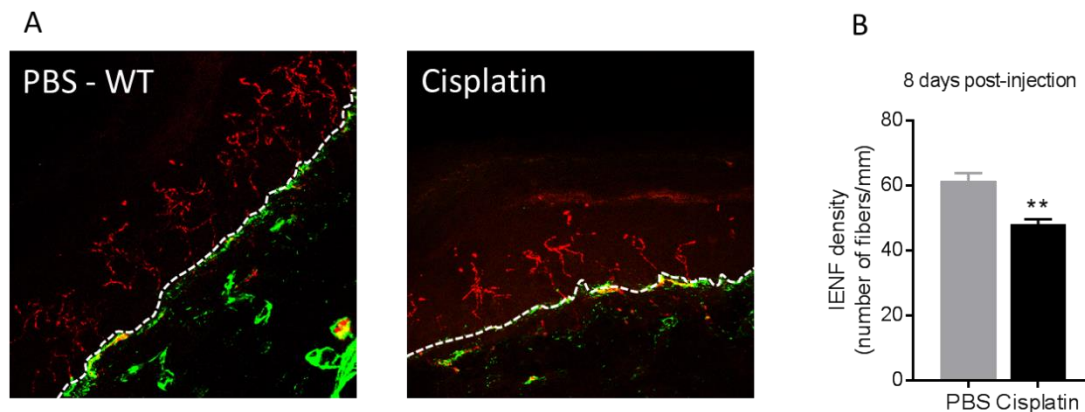
## Supplemental Digital Content



Suppl 1

**Supplemental Digital Content 1. Reconstitution of *Rag2*<sup>-/-</sup> mice with T cells.** (A) Flow cytometry analysis of circulating CD8<sup>+</sup> T cells as percentage of CD45<sup>+</sup> cells in WT mice, *Rag2*<sup>-/-</sup> mice, and *Rag2*<sup>-/-</sup> mice reconstituted with CD8<sup>+</sup> T cells. One-way ANOVA followed by Bonferroni's multiple comparisons test,  $F(4,16)=9.39$ ,  $P<0.001$  ( $n=4-5$  mice/group). (B) mRNA levels of *Cd3e* and *Cd8a* in the spleen and dorsal

root ganglia of male and female WT mice, *Rag2*<sup>-/-</sup> mice, and *Rag2*<sup>-/-</sup> mice reconstituted with CD8<sup>+</sup> T cells. One-way ANOVA followed by Bonferroni's multiple-comparisons test: spleen,  $F(4,18)=8.4$ ,  $P<0.001$ ; DRG,  $F(4,45)=7.86$ ,  $P<0.0001$  (n=5-10 mice/group). **(C)** mRNA levels of *Cd3e* in the spleen and flow cytometry analysis of circulating CD8<sup>+</sup> T cells as percentage of CD45<sup>+</sup> cells of *Rag2*<sup>-/-</sup> mice reconstituted with CD8<sup>+</sup> T cells before or after cisplatin treatment. Blood CD8<sup>+</sup> T cells: one-way ANOVA followed by Bonferroni's multiple comparisons test,  $F(2,18)=6.47$ ,  $p=0.008$  (n=7 mice/group). Data are shown as mean  $\pm$  SEM. \*\*\* $P<0.001$ , \*\* $P<0.01$ , \* $P<0.05$ .



Suppl 2

**Supplemental Digital Content 2. Intraepidermal nerve fiber (IENF) density 8 days after cisplatin administration in WT mice. (A)** Representative images of IENFs (PGP9.5, red and collagen, green) in the glabrous skin of the plantar surface of the hind paws of WT mice 8 days after cisplatin or PBS. Dashed lines indicate the basement membrane. **(B)** Quantification of IENF density, expressed as the number of nerve fibers crossing the basement membrane/length of the basement membrane (mm). Unpaired t-test ( $t=4.57$ ;  $df = 10$ ) (n=6 mice/group). Data are shown as mean  $\pm$  SEM. \*\*\* $P<0.001$ , \*\* $P<0.01$ , \* $P<0.05$ .