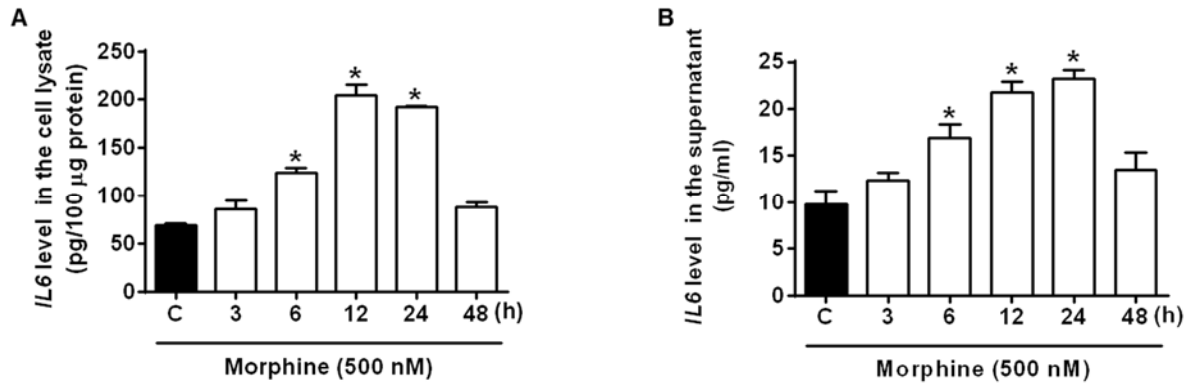


1 **Supplementary Figure 1.**



2

3 Morphine-mediated production of IL6 in human primary astrocytes. ELISA showing the
4 time-dependent upregulation in protein levels of proinflammatory cytokine IL6 in the cell
5 lysates (A) and supernatants (B) of human primary astrocytes. Data are presented as
6 mean \pm SEM; n = 6. Non-parametric Kruskal-Wallis One-way ANOVA followed by Dunn's
7 *post hoc* test was used to determine the statistical significance between multiple groups:

8 *, P < 0.05 vs. control.