

**Differential color development and response to light deprivation of
fig (*Ficus carica* L.) syconia peel and female flower tissues:
transcriptome elucidation**

Ziran Wang¹, Miaoyu Song¹, Yunze Li¹, Shangwu Chen², Huiqin Ma^{1*}

¹College of Horticulture, China Agricultural University, Beijing, P.R. China

²College of Food Science and Nutritional Engineering, China Agricultural University,
Beijing, P.R. China

Ziran Wang: wangziran@cau.edu.cn

Miaoyu Song: songmiaoyu@cau.edu.cn

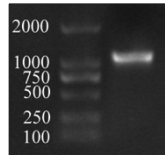
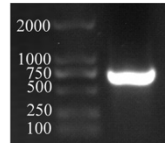
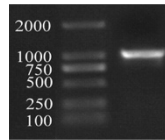
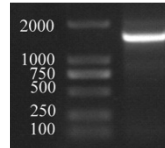
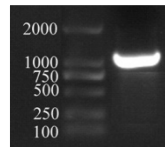
Yunze Li: liyunze@cau.edu.cn

Shangwu Chen: swchen@cau.edu.cn

Huiqin Ma: hqma@cau.edu.cn

*Correspondence: Huiqin Ma, hqma@cau.edu.cn

Table S1 Primer sequences of structural genes in the flavonoid-biosynthesis pathway used for cDNA cloning

Gene name	Seq ID	Primer sequence (5'→3')	Length (bp)	Annealing temperature (°C)	
<i>FcCHS1</i>	c33458_g1	Forward: ATGGCCTCTGTATACGAAATCCG Reverse: TTAATTAAGGGCAAGACTGCGG	1173	56	
<i>FcCHI1</i>	c658_g1	Forward: ATGCCTCCGATGACTTAC Reverse: TCAAAGTCCAACAGTTTCT	702	58	
<i>FcF3H1</i>	c43823_g1	Forward: ATGGAGGTAGAGAGGGTCC Reverse: TTATTGGGGAAGCTTGTTGAGC	1008	56	
<i>FcF3H1</i>	c32643_g3	Forward: ATGCCTTCTGTCTCTATCATCCT Reverse: TTATGCTTGATATAAGTGTGGGCC	1530	56	
<i>FcDFR1</i>	c46884_g6	Forward: ATGGCAAATGCAAACAAATAAATTTTCG Reverse: TTAATAAGATCACCAAATTTCCCTCGC	1056	57	

FcUFGT1 c45009_g5 Forward: ATGGCATCACCACCACCA
Reverse: TCACTCTTGAACTCCTCCGG

1374

58

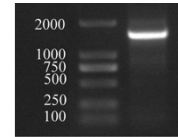


Table S2 Primer sequences of genes used for verification of digital gene-expression results by RT-qPCR

Gene name	Seq ID	Forward primer (5'→3')	Reverse primer (5'→3')
<i>Actin</i>	Reference gene	GCCATTCAAGCCGTGCTTT	TGGGAACAGTGTGGCTGACA
<i>FcCHS1</i>	c33458_g1	ACCAATCCATCTGAGGCACA	GATAATCAGCCTGCGAGACG
<i>FcCHS2</i>	c46769_g2	CCGTGAAGTTGGGCTTACAT	AAACCACACTTGGCTTCCAC
<i>FcCH34</i>	c46769_g3	CAAAGCACGTGACTCCCATC	ATTCCTCGACGGTCACCAT
<i>FcCHI1</i>	c658_g1	GTAACGGGTCCGTTTGAGAA	GTAAAGAACCGGACGGTGA
<i>FcCHI2</i>	c47235_g1	CACTTCCCTTCTTCCCCTTC	TGGTTGATGAAATCCCCTTC
<i>FcF3H1</i>	c43823_g1	GTCGGTCGGGTATTCTTTGA	TAGATGGAGGAGCCATGAGG
<i>FcF3H2</i>	c73203_g1	GAGGTAGAGAGGGTCCAAGC	GAAACCCACTCTTTGCTCG
<i>FcF3H3</i>	c29451_g2	TGCGGGCATGGAGGATATAG	CACTTCCCCAAAAGGCCATC
<i>FcF3H1</i>	c32643_g1	GTGGCGGAGCAGTTCCTTA	GAGGTGAACGGTGGTGATCT
<i>FcF3H2</i>	c42263_g3	GATCCGCCACCCTAAAATCT	GGATGTGGTAGCCGTTGACT
<i>FcDFR1</i>	c46884_g6	CTCCTCCTCCGAATTAGCGT	CGCCTGATTCTGTTTCCTCG
<i>FcDFR2</i>	c18574_g2	AGGTGGAGGTAAGAGCAGCA	GATAGCCCATGCCACA ACTT
<i>FcDFR3</i>	c43356_g1	TGTGGAGGGAAGCTTTAGTGA	GCTGCTCGCCAATAACAGTT
<i>FcANS1</i>	c59676_g1	CATCATGCACATTGGTGACA	GTGCTGGATATGCTGCTGAA
<i>FcANS2</i>	c42804_g1	GGCAGTCGTTGAAGAAGGTG	TCCAACCGTCGACTTATCC

<i>FcUFGT1</i>	C45009_g5	GAGTTGATGGTGGGGCTTTC	TCACTCTTGAACTCCTCCGG
<i>FcUFGT2</i>	c78174_g2	CGGAGAACACGGAGAAGAAG	ATTCCCCTCCAAATTCCAAC
<i>FcMYB114</i>	c42269_g1	TGAGCGGGAGGAGATTGATC	GCAAACCAACAGACCCACAT
<i>FcHY5</i>	c37077_g1	CACTCACAAACCATCGGCAT	GCAAGGAAAGGAAGAAGGC

Table S3 Summary of the sequencing assembly

Sequences	T4-P	T4-F	LD-P	LD-F
Before trimming				
Total nucleotides (bp)	8,406,965,982	7,394,743,914	9,575,327,666	9,582,970,682
Number of raw reads	55,870,328	48,971,814	63,412,766	63,463,382
Q20 percentage (%)	96.45	95.91	97.01	97.05
After trimming				
Total nucleotides (bp)	7,880,080,702	6,747,389,564	9,124,422,432	9,137,841,606
Number of raw reads	54,294,240	47,519,894	61,400,466	61,519,498
Q20 percentage (%)	98.20	98.02	98.42	98.43
Mapping ratio				
Total nucleotides of transcripts (bp)	54,294,240	47,519,894	61,400,466	61,519,498
Mapped nucleotides of transcripts (bp)	49,665,838	43,589,627	55,167,988	56,178,166
Mapped rate (%)	91.48	91.37	89.85	91.32

T4-P, peel at stage T4; T4-F, female flower tissue at stage T4; LD-P, stage 4 peel following light-deprivation treatment; LD-F, stage 4 female flower tissue following light-deprivation treatment.

Table S4 Shared differentially expressed genes in ‘Zibao’ peel and female flower tissue following light deprivation

Seq_id	Regulated	Annotation
Transcription factor		
c39854_g1	up	Basic helix-loop-helix protein 50
c43008_g2	up	Basic helix-loop-helix protein 75
c43099_g1	up	Basic helix-loop-helix protein 112
c66694_g1	up	Basic helix-loop-helix protein 78
c72970_g1	up	Basic helix-loop-helix protein 62
c81283_g1	up	Basic helix-loop-helix protein 62
c38338_g1	up	bZIP transcription factor 57
c41486_g1	up	Ethylene-responsive transcription factor 061
c39346_g3	up	HD-ZIP protein ATHB-15
c45256_g3	up	Heat shock factor protein HSF24
c12586_g1	up	MYB family transcription factor
c36728_g1	up	Transcription factor MYB1R1
c40543_g2	up	MYB-related protein 3R-1
c40750_g1	up	Transcription repressor MYB5
c44925_g1	up	Transcription factor MYB86
c81761_g1	up	NAC domain-containing protein 89
c23885_g1	up	WRKY transcription factor 9
c23885_g2	up	WRKY transcription factor 9
c40908_g1	up	WRKY transcription factor 72
c40266_g1	down	Basic helix-loop-helix protein 110
c29668_g2	down	Ethylene-responsive transcription factor 1
c41517_g1	down	Floral homeotic protein APETALA 2
c9228_g1	down	GATA transcription factor 2
c26517_g2	down	Heat stress transcription factor 25
c43194_g3	down	Heat stress transcription factor A-2
c37077_g1	down	Transcription factor HY5

c72503_g1	down	Transcription factor DIVARICATA
c27914_g3	down	Transcription factor DIVARICATA
c44885_g4	down	Transcription factor DIVARICATA
c41017_g1	down	Transcription factor DIVARICATA
c45044_g1	down	Transcription factor DIVARICATA
c32875_g1	down	Transcription factor NAC
c33198_g2	down	Transcription factor TCP22
c38915_g2	down	Transcription factor TCP19

Anthocyanin-biosynthesis pathway

c46816_g1	up	LRR receptor-like serine/threonine-protein kinase FLS2:
c388_g2	up	Phenylalanine ammonia-lyase 1
c25197_g1	up	Anthocyanidin synthase
c46769_g3	up	Chalcone synthase 3
c42667_g2	up	UDP-glucose flavonoid 3-O-glucosyltransferase 6
c23651_g1	up	Anthocyanidin synthase
c32643_g1	up	Flavonoid 3'-monooxygenase
c42263_g2	up	Flavonoid 3'-monooxygenase
c59670_g1	up	UDP-glucose flavonoid 3-O-glucosyltransferase 7
c48323_g1	down	UDP-glycosyltransferase 86A1
c41071_g2	down	UDP-glucose flavonoid 3-O-glucosyltransferase 6

Chlorophyll a-b binding protein

c25429_g1	up	Sigma factor binding protein 1, chloroplastic
c83332_g1	down	Polygalacturonase
c78439_g1	down	LHCI type II CAB
c47616_g1	down	CAB-10A
c53957_g1	down	LHCI type III CAB-P4
c59646_g1	down	LHCII protein 4.2

Sugar accumulation

c46424_g1	up	Beta-glucosidase 12
c26539_g1	up	Putative alpha-L-fucosidase 1
c23588_g1	up	Bidirectional sugar transporter N3
c22022_g1	up	Lysine-rich arabinogalactan protein 18
c31609_g1	up	Sucrose synthase 6

c59597_g1	up	Bidirectional sugar transporter SWEET12
c43584_g1	up	Fasciclin-like arabinogalactan protein 1
c38453_g1	up	ABC transporter C family member 5
c11665_g1	up	MGDG synthase type A
c37376_g1	up	Glycogenin-like protein 7
c28785_g1	up	Classical arabinogalactan protein 9
c31609_g2	up	Sucrose synthase 6
c16805_g1	up	Classical arabinogalactan protein 9
c43519_g2	up	Beta-fructofuranosidase, insoluble isoenzyme CWINV1
c35815_g2	up	Putative glycosyltransferase 5
c39310_g2	up	Acetyl-CoA acetyltransferase, cytosolic 1
c46841_g1	up	Lysine histidine transporter 1
c42221_g1	down	Leucine-rich repeat extensin-like protein 3
c31627_g1	down	Galactinol synthase 1
c75967_g1	down	Organic cation/carnitine transporter 3
c39262_g3	down	Sulfated surface glycoprotein 185
c32237_g1	down	Hydroquinone glucosyltransferase
c44351_g1	down	Zeatin O-xylosyltransferase
c45793_g1	down	Lysine-specific demethylase 3B
c37451_g1	down	ABC transporter G family member 12
c59640_g1	down	ATP-dependent 6-phosphofructokinase 7;
c45588_g2	down	Probable glycosyltransferase At5g03795
c15951_g1	down	Lysine-specific demethylase 3B
c45290_g1	down	Epidermis-specific secreted glycoprotein EP1
c73045_g1	down	Hydroxyproline-rich glycoprotein 1
c60053_g1	down	Fructose-bisphosphate aldolase
c24172_g1	down	Fructose-bisphosphate aldolase cytoplasmic isozyme

Cytochrome-related protein

c33311_g1	up	Cytochrome P450 CP1
c43074_g1	up	Cytochrome P450 81D11
c18476_g1	up	Cytochrome P450 CYP736A12
c66778_g1	up	Cytochrome P450 93A1
c46699_g1	up	Cytochrome P450 71D11

c40433_g1	up	Cytochrome P450 82C4
c34981_g1	up	Cytochrome P450 734A1
c78221_g1	down	Cytochrome b5 isoform B
c46125_g2	down	Full=Cytochrome c oxidase subunit 1
c53653_g1	down	Cytochrome P450 71B34

Trace element-related protein

c35690_g1	up	Calmodulin-like protein 11
c37914_g1	up	Boron transporter 1
c37914_g2	up	Boron transporter 1
c30906_g1	up	Ca (2 ⁺)-ATPase isoform 2
c6794_g1	up	Zinc finger protein STOP1 homolog
c44870_g1	up	Potassium channel AKT1
c46335_g3	up	Homogentisate phytyltransferase 2, chloroplastic
c29896_g2	up	Calmodulin-like protein 5
c60369_g1	down	COBW domain-containing protein 1
c32683_g1	down	Zinc finger protein CONSTANS-LIKE 7
c45619_g1	down	Zinc finger protein MAGPIE
c60176_g1	down	Calcium-binding protein CML38

Stress response

c59619_g1	down	Heat shock protein
c25561_g1	down	15.7 kDa Heat shock protein, peroxisomal
c46871_g2	down	Heat shock cognate 70 kDa protein
c46871_g5	down	Heat shock 70 kDa protein
c46871_g1	down	Heat shock cognate 70 kDa protein 2
c45569_g1	down	Heat shock 70 kDa protein 8
c46276_g1	down	17.3 kDa Class I heat shock protein
c46871_g3	down	Heat shock 70 kDa protein
c60423_g1	down	18.2 kDa Class I heat shock protein
c38276_g4	down	Heat shock 70 kDa protein
c41926_g1	down	Small heat shock protein, chloroplastic
c46998_g1	down	17.4 kDa Class III heat shock protein
c28107_g4	down	Heat shock cognate 70 kDa protein
c29501_g1	down	Heat shock cognate 70 kDa protein

c46276_g3	down	17.3 kDa Class I heat shock protein
c46276_g2	down	17.3 kDa Class I heat shock protein
c46567_g1	down	Heat shock protein 83
c39984_g1	down	Heat shock 40 kDa protein 1 protein 40
c32064_g1	down	23.6 kDa Heat shock protein
c36874_g1	down	Heat shock protein 82
c38276_g2	down	Heat shock 70 kDa protein 1
c31839_g1	down	Heat shock protein 90-1; Short=AtHSP90.1
c15645_g1	down	Small heat shock protein

Dirigent protein

c41473_g1	up	Metalloendoproteinase 1
c40471_g1	up	Inhibitor of trypsin and Hageman factor
c25369_g1	up	Thaumatococcus-like protein 1
c43066_g1	up	Serine protease inhibitor 2
c35833_g2	up	Allene oxide synthase, chloroplastic
c39260_g2	up	Pathogenesis-related protein 1
c78371_g1	up	Arginine decarboxylase
c35833_g1	up	Allene oxide synthase
c36160_g1	up	Alpha-amylase/subtilisin inhibitor
c47307_g1	up	Major latex allergen Hev b 5
c35833_g3	up	Allene oxide synthase, chloroplastic
c22164_g1	up	Pathogenesis-related protein STH-2
c35850_g2	up	Subtilisin-like protease
c22521_g1	up	Pathogen-related protein
c29750_g1	up	BTB/POZ domain-containing protein At5g48130
c29646_g1	up	Dirigent protein 19
c31413_g1	up	MLO-like protein 11
c37666_g2	up	Putative disease resistance protein RGA1
c45494_g1	up	Retrovirus-related Pol polyprotein from transposon TNT 1-94
c47181_g1	up	Putative disease resistance RPP13-like protein 1
c39793_g2	up	MLO-like protein 6
c40997_g2	up	Disease resistance protein RPP13
c46256_g1	up	Isoflavone reductase-like protein

c36373_g1	up	Allene oxide synthase, chloroplastic
c17039_g1	up	Thaumatococcus-like protein
c47022_g4	up	Endochitinase
c73214_g1	up	Alkaline elastase YaB
c41026_g2	up	Major allergen Pru ar 1
c45198_g2	up	Endochitinase PR4
c39260_g1	up	Pathogenesis-related protein 1
c47290_g3	up	Putative disease resistance RPP13-like protein 3
c44303_g3	up	Pirin-like protein
c43392_g1	up	Inactive TPR repeat-containing thioredoxin TTL3
c8892_g1	down	Cysteine proteinase COT44
c40563_g1	down	DAG protein, chloroplastic
c28279_g1	down	Protein ASPARTIC PROTEASE IN GUARD CELL 1
c37829_g1	down	Protein EARLY RESPONSIVE TO DEHYDRATION 15
c42670_g1	down	BTB/POZ and MATH domain-containing protein 3
c47387_g1	down	Outer envelope protein 80, chloroplastic
c25738_g1	down	BTB/POZ domain-containing protein At2g30600
c42218_g1	down	Thioredoxin-like 1-1, chloroplastic
c25777_g1	down	Cysteine proteinase inhibitor 1
Plant hormones		
c38441_g3	up	Brassinosteroid-regulated protein BRU1
c38441_g1	up	Brassinosteroid-regulated protein BRU1
c26485_g1	up	Cytokinin dehydrogenase 3
c43993_g1	up	Cytokinin dehydrogenase 4
c24588_g1	up	Auxin transport protein BIG
c34871_g1	up	Cytokinin riboside 5'-monophosphate phosphoribohydrolase LOG7
c25300_g2	up	Auxin efflux carrier component 3
c40067_g1	up	Auxin-binding protein ABP19a
c48357_g1	up	SAUR family protein
c66500_g2	up	Auxin transporter-like protein 2
c32874_g1	up	Cytokinin riboside 5'-monophosphate phosphoribohydrolase LOG8

c36086_g2	up	9-cis-epoxycarotenoid dioxygenase NCED6, chloroplastic
c20025_g1	up	Auxin response factor 16
c2285_g1	up	Serine/threonine-protein kinase SAPK2
c1655_g1	down	Auxin-induced protein X10A
c54431_g1	down	Protein ABSCISIC ACID-INSENSITIVE 5
c45831_g4	down	Indole-3-acetic acid-induced protein ARG7
Ethylene-synthesis pathway		
c780_g1	up	S-adenosylmethionine synthase 1
c2984_g1	up	S-adenosylmethionine synthase 1
c33708_g1	up	S-adenosylmethionine synthase 1
c39734_g3	up	S-adenosylmethionine synthase 2
Oxidoreductase		
c48232_g1	up	Peroxidase 4
c17284_g1	up	Peroxidase 51
c32133_g1	up	Benzenediol:oxygen oxidoreductase 15
c1295_g1	up	Putative laccase-9c
c37320_g1	up	Benzenediol:oxygen oxidoreductase 7
c46561_g1	up	Polyphenol oxidase, chloroplastic
c40790_g1	up	Cationic peroxidase 1
c38513_g1	up	Peroxidase 15
c53614_g1	up	L-ascorbate oxidase homolog
c47328_g1	up	Tropinone reductase-like 2
c22895_g2	up	Polyphenol oxidase, chloroplastic
c45688_g4	down	Oxygen-dependent coproporphyrinogen-III oxidase, chloroplastic
c47133_g3	down	NADH-ubiquinone oxidoreductase chain 2
c45361_g3	down	Cinnamoyl-CoA reductase 1
c40391_g1	down	NuA4 complex subunit EAF3 homolog
c70747_g1	down	12-Oxophytodienoate reductase 1
c45955_g2	down	NADH-ubiquinone oxidoreductase chain 2
c78250_g1	down	1-Aminocyclopropane-1-carboxylate oxidase 1
c45694_g6	down	Putative L-ascorbate peroxidase 6
c59623_g1	down	Ribonucleoside-diphosphate reductase small chain

c32402_g2	down	Cinnamoyl-CoA reductase 1
c15969_g1	down	Glutamine synthetase nodule isozyme
Protein kinase		
c39208_g1	up	LRR receptor-like serine/threonine-protein kinase At1g53430
c31899_g1	up	Acyl-CoA--sterol O-acyltransferase 1
c40495_g1	up	Receptor-like protein kinase BRI1-like 3
c37679_g1	up	G-type lectin S-receptor-like serine/threonine-protein kinase RLK1
c37519_g1	up	Serine acetyltransferase 3, mitochondrial
c35789_g1	up	Polyamine transporter At3g13620
c43113_g1	up	LRR receptor-like serine/threonine-protein kinase At1g06840
c43038_g1	up	Serine/threonine-protein kinase At5g01020
c43674_g3	up	G-type lectin S-receptor-like serine/threonine-protein kinase At2g19130
c45077_g2	up	LRR receptor-like serine/threonine-protein kinase At4g36180
c2285_g1	up	Serine/threonine-protein kinase SAPK2
c40326_g1	up	Leucine-rich repeat receptor-like serine/threonine-protein kinase BAM1
c44456_g1	up	Kinesin-like protein D
c9350_g1	up	LRR receptor-like serine/threonine-protein kinase At1g56140
c20890_g1	down	Serine carboxypeptidase-like 19
c37845_g1	down	Serine/arginine-rich splicing factor SR45a
c44051_g2	down	Serine/threonine-protein kinase At1g01540
c42099_g1	down	CBL-interacting protein kinase 16
c47097_g1	down	G-type lectin S-receptor-like serine/threonine-protein kinase SD1-1
c45872_g1	down	Serine/threonine-protein kinase STN8, chloroplastic
c51272_g1	down	CBL-interacting serine/threonine-protein kinase 25
c72059_g1	down	Acyl-[acyl-carrier-protein]
c33825_g1	down	Phosphoserine aminotransferase, chloroplastic
c51376_g1	down	LRR receptor-like serine/threonine-protein kinase At4g36180
Others		
c41196_g1	up	(-)-Germacrene D synthase

c40756_g1	up	Prostaglandin G/H synthase 1
c23523_g1	up	MpBBI, partial
c73067_g1	up	Hypothetical protein L484_005338
c62863_g1	up	–
c47082_g1	up	FAD-binding domain-containing family protein
c41801_g1	up	–
c37714_g1	up	Carbonic anhydrase 2
c15770_g1	up	Tryptophan synthase beta chain 2
c36743_g1	up	myosin-Vb-like
c45415_g2	up	Putative mitochondrial chaperone BCS1-B
c39358_g1	up	Putative sulfate transporter 3.5
c62561_g1	up	Hypothetical protein L484_014351
c45133_g1	up	–
c27960_g1	up	Sulfate transporter 3.1
c79258_g1	up	Myosin-12
c16014_g1	up	Fatty acid desaturase 3
c17733_g1	up	Myosin-12
c45888_g1	up	Polyneuridine-aldehyde esterase-like isoform 1
c63303_g1	up	–
c22828_g1	up	BAG family molecular chaperone regulator 3
c40019_g2	up	–
c47959_g1	up	Hypothetical protein L484_022573
c22655_g1	up	Hypothetical protein L484_013383
c60796_g1	up	Unnamed protein product
c59907_g1	up	Wound-induced protein WIN2
c28345_g1	up	Hypothetical protein L484_005918
c34701_g1	up	Aquaporin TIP4-1
c44811_g1	up	LL-diaminopimelate aminotransferase
c78697_g1	up	Uncharacterized protein LOC103332309
c78290_g1	up	Auxin-induced protein 5NG4
c34941_g1	up	Hypothetical protein PRUPE_ppa015386mg
c25829_g1	up	Hypothetical protein L484_026099
c33700_g1	up	–

c41398_g2	up	Hypothetical protein L484_018234
c4888_g1	up	Hypothetical protein L484_025881
c1530_g1	up	Hypothetical protein POPTR_0001s23960g
c41682_g1	up	–
c11171_g1	up	Hypothetical protein L484_027406
c34564_g1	up	–
c33608_g1	up	Amino acid binding protein, putative
c30088_g1	up	–
c42780_g1	up	Protein spinster
c1860_g2	up	Receptor-like protein 12
c56047_g1	up	Hypothetical protein L484_020796
c66337_g1	up	–
c24015_g1	up	Hypothetical protein L484_007659
c25103_g1	up	Tryptophan aminotransferase-related protein 2
c74812_g1	up	Hypothetical protein L484_009723
c35527_g1	up	Patatin group A-3
c27620_g1	up	Polygalacturonase
c34824_g1	up	–
c79216_g1	up	Putative nitrite transporter
c27259_g1	up	Cation/H(+) antiporter 20
c68709_g1	up	Hypothetical protein L484_013008
c38792_g1	up	Cellulose synthase-like protein E1
c37873_g2	up	Uncharacterized protein LOC103332843
c45446_g2	up	Salicylate O-methyltransferase
c42600_g1	up	NAC domain-containing protein 74
c47370_g1	up	–
c67272_g1	up	–
c39584_g2	up	–
c30373_g1	up	BAG family molecular chaperone regulator 1
c15713_g1	up	Putative L-type lectin-domain containing receptor kinase S.5
c37155_g1	up	Putative protein phosphatase 2C 65
c46513_g4	up	E3 ubiquitin-protein ligase UPL1
c44135_g1	up	Hypothetical protein L484_021343

c44782_g3	up	–
c45663_g1	up	E3 ubiquitin-protein ligase ATL42
c24193_g1	up	Hypothetical protein PRUPE_ppa022164mg
c46037_g1	up	Hypothetical protein POPTR_0016s02500g
c45620_g1	up	Nucleobase-ascorbate transporter 2
c42270_g1	up	Hypothetical protein L484_012754
c58399_g1	up	–
c35483_g1	up	Hypothetical protein POPTR_0004s23990g
c78947_g1	up	Hypothetical protein L484_021563
c62717_g1	up	–
c61093_g1	up	–
c20021_g1	up	NADP-dependent malic enzyme
c26807_g1	up	–
c40307_g1	up	Hypothetical protein L484_004609
c44852_g2	up	Pleiotropic drug resistance protein 2
c44085_g2	up	Type I inositol-1,4,5-trisphosphate 5-phosphatase 11
c44761_g1	up	Hypothetical protein L484_004241
c27363_g1	up	1-Aminocyclopropane-1-carboxylate oxidase-3-like protein
c40734_g1	up	–
c32167_g1	up	Purple acid phosphatase 22
c42882_g1	up	Hypothetical protein L484_022099
c94_g1	up	–
c27378_g1	up	Hypothetical protein L484_010895
c36930_g1	up	Hypothetical protein L484_020944
c40227_g1	up	Reticulon-like protein
c43124_g2	up	Kunitz-type elastase inhibitor BrEI-like
c44823_g3	up	Wall-associated receptor kinase-like 9
c46559_g4	up	Hypothetical protein L484_016736
c66025_g1	up	UPF0496 protein [Theobroma UPF0496 protein]
c45810_g2	up	–
c61930_g1	up	NADP-dependent malic enzyme
c27130_g1	up	Sulfate transporter 3.1
c43421_g1	up	Hypothetical protein L484_017807

c37504_g1	up	Hypothetical protein L484_009496
c47362_g1	up	Hypothetical protein L484_014177
c38897_g1	up	–
c36558_g1	up	Hypothetical protein POPTR_0006s26730g
c37676_g1	up	Hypothetical protein L484_017858
c48021_g1	up	Hypothetical protein L484_018092
c66407_g1	up	Pyrophosphate-energized vacuolar membrane proton pump
c39536_g1	up	Hypothetical protein POPTR_0003s08530g
c33118_g1	up	–
c72459_g1	up	Tabersonine 16-O-methyltransferase
c59693_g1	up	Hypothetical protein L484_022042
c44617_g2	up	Probable receptor-like protein kinase At1g67000
c46901_g1	up	Ankyrin repeat-containing protein
c37460_g2	up	Phytosulfokines 2
c6715_g1	up	–
c36224_g1	up	Putative F-box/LRR-repeat protein
c46326_g2	up	Putative transporter MCH1
c44641_g1	up	Hypothetical protein L484_010028
c39639_g2	up	Hypothetical protein L484_012729
c45256_g4	up	Hypothetical protein AMTR_s00044p00088410
c60098_g1	up	Root phototropism protein 3
c22717_g1	up	Hypothetical protein L484_015854
c61608_g1	up	–
c30478_g1	up	–
c66049_g1	up	Hypothetical protein EUGRSUZ_J03081
c49238_g1	up	–
c30139_g1	up	–
c32395_g1	up	Hypothetical protein L484_019794
c42607_g2	up	Putative phospholipid-transporting ATPase 9
c24802_g1	up	Hypothetical protein PRUPE_ppa000723mg
c31425_g1	up	Hypothetical protein PRUPE_ppa009089mg
c41935_g1	up	Hypothetical protein L484_026458
c45256_g5	up	Actin

c54067_g1	up	Hypothetical protein CICLE_v10014579mg
c14492_g1	up	–
c53951_g1	up	Putative inorganic phosphate transporter 1-7
c33329_g1	up	Lysine histidine transporter 1
c34955_g3	up	Hypothetical protein L484_026266
c32935_g1	up	Hypothetical protein L484_008838
c42983_g2	up	Nitrate transporter 1.5
c34203_g2	up	–
c36701_g2	up	Hypothetical protein L484_026861
c45256_g2	up	Actin
c47117_g3	up	Oxidoreductase family protein
c27000_g1	up	–
c28074_g1	up	Hypothetical protein L484_013975
c9590_g1	up	–
c29896_g1	up	–
c17135_g1	up	Glutamate-gated kainate-type ion channel receptor subunit GluR5, putative
c26634_g1	up	DNA polymerase III subunit
c32908_g1	up	Uncharacterized protein TCM_006175
c72279_g1	up	Ribonuclease 3-like protein 3
c32488_g1	up	Hypothetical protein L484_024550
c33943_g1	up	Uncharacterized protein LOC103440565
c22654_g2	up	–
c44341_g2	up	Pectinesterase 2
c48138_g1	up	Hypothetical protein L484_005735
c44012_g1	up	Hypothetical protein L484_010090
c37653_g1	up	Glutamate dehydrogenase 2
c32060_g1	up	Hypothetical protein L484_023636
c795_g1	up	–
c3341_g1	up	–
c39525_g1	up	Hypothetical protein CICLE_v10023471mg, partial
c44788_g1	up	–
c42278_g1	up	Hypothetical protein PRUPE_ppa002180mg

c41373_g1	up	Probable receptor-like protein kinase At1g67000
c42179_g1	up	Uncharacterized protein LOC103450445
c43207_g1	up	Hypothetical protein L484_000923
c37454_g1	up	Putative carboxylesterase 2
c45272_g1	up	Hypothetical protein PRUPE_ppa015445mg
c36690_g1	up	Extracellular ribonuclease LE
c44187_g3	up	AarF domain-containing kinase isoform 2
c45836_g5	up	Hypothetical protein L484_022857
c48689_g1	up	Hypothetical protein PRUPE_ppa026773mg, partial
c15824_g1	up	Hypothetical protein L484_027304
c20244_g1	up	—
c34593_g1	up	—
c38936_g1	up	Hypothetical protein L484_004108
c4595_g1	up	Uncharacterized protein LOC100255813
c59695_g1	up	Hypothetical protein L484_013434
c42344_g1	up	Glycerol-3-phosphate acyltransferase 1
c46089_g1	up	Tabersonine 16-O-methyltransferase
c42448_g1	up	Transmembrane protein 87A
c76115_g1	up	Hypothetical protein VITISV_002159
c16772_g1	up	Hypothetical protein L484_005955
c47290_g2	up	Disease resistance protein RPM1
c32629_g1	up	Hypothetical protein L484_022781
c42536_g1	up	Hypothetical protein L484_013950
c45017_g2	up	Hypothetical protein L484_001595
c37951_g2	up	Receptor-like protein kinase HERK 1
c33015_g1	up	E3 ubiquitin-protein ligase
c34420_g1	up	Tetratricopeptide repeat-like superfamily protein
c35087_g1	up	Hypothetical protein L484_011284
c46923_g1	up	Hypothetical protein PRUPE_ppa018374mg, partial
c45901_g1	up	Phytosulfokine receptor 1
c40772_g1	up	Light-inducible protein CPRF-2, putative
c41268_g2	up	OSBP (oxysterol binding protein)-related protein 2A isoform 4
c43020_g3	up	F-box/kelch-repeat protein

c39264_g1	up	Putative peptide/nitrate transporter
c15912_g1	up	Triacylglycerol lipase SDP1
c22092_g1	up	Hypothetical protein L484_006800
c31212_g1	up	Hypothetical protein L484_005835
c47087_g1	up	TMV resistance protein N
c38432_g2	up	MATE efflux family protein LAL5
c27964_g1	up	Hypothetical protein L484_025877
c37931_g1	up	Hypothetical protein PRUPE_ppa003644mg
c40517_g1	up	Putative inactive receptor kinase
c43464_g3	up	Putative receptor protein kinase ZmPK1
c46089_g2	up	Tabersonine 16-O-methyltransferase
c46765_g1	up	Hypothetical protein PRUPE_ppa000824mg
c59705_g1	up	Blue copper protein
c25411_g1	up	Putative phosphatidylinositol 4-kinase type 2-beta
c44291_g1	up	Hypothetical protein L484_019537
c12696_g1	up	Formin-like protein 5
c45951_g1	up	Hypothetical protein PRUPE_ppa002729mg
c22373_g1	down	Hypothetical protein POPTR_0002s09970g
c22520_g1	down	Hypothetical protein L484_018717
c30528_g1	down	Hypothetical protein CICLE_v10009512mg
c45911_g1	down	–
c33938_g1	down	–
c44779_g3	down	–
c53863_g1	down	Hypothetical protein L484_010421
c15623_g2	down	–
c60212_g1	down	–
c12141_g2	down	Hypothetical protein AMTR_s00001p00156400
c38531_g1	down	Uncharacterized protein LOC100778672
c34672_g1	down	Ubiquitin-conjugating enzyme E2 28-like
c29445_g2	down	–
c44947_g2	down	Hypothetical protein L484_008155
c45314_g2	down	Ubiquitin extension protein
c23095_g1	down	Hypothetical protein L484_018408

c41524_g1	down	–
c17983_g1	down	–
c45028_g2	down	Hypothetical protein L484_002870
c23289_g1	down	40S ribosomal protein S6 isoform 1
c32818_g1	down	–
c31770_g1	down	Hypothetical protein L484_012921
c81973_g1	down	40S ribosomal protein S2-4-like
c40782_g1	down	Ras-related small GTP-binding family protein
c37067_g2	down	Hypothetical protein PHAVU_011G209600g
c72407_g1	down	Uncharacterized protein LOC103331200
c26507_g1	down	–
c43836_g10	down	Hypothetical protein L484_025703
c40758_g1	down	Hypothetical protein EUGRSUZ_C01180
c45532_g1	down	Uncharacterized G-patch domain protein DDB_G0278987-like
c79481_g1	down	–
c67147_g1	down	Hypothetical protein L484_013349
c16333_g2	down	GTPase obg
c42285_g2	down	Unnamed protein product
c43065_g1	down	Uncharacterized protein LOC103328581
c46999_g2	down	–
c32507_g1	down	–
c79119_g1	down	–
c46859_g2	down	Hypothetical protein PRUPE_ppa001084mg
c59603_g1	down	Splicing factor U2af small subunit A
c53817_g1	down	Rae1-like protein At1g80670
c46798_g5	down	Hypothetical protein L484_024429
c54229_g1	down	–
c41554_g3	down	Squalene monooxygenase
c78220_g1	down	–
c38763_g1	down	Chaperone protein
c36857_g4	down	Pyruvate kinase, cytosolic isozyme
c66450_g1	down	–
c40733_g1	down	20 kDa Chaperonin

c53572_g1	down	Hypothetical protein L484_006058
c29518_g1	down	Oxygen-evolving enhancer protein 2
c45260_g1	down	–
c43665_g1	down	Hypothetical protein L484_016056
c46346_g1	down	Putative cysteine desulfurase
c516_g1	down	–
c49063_g1	down	Hypothetical protein L484_014979
c45305_g1	down	Putative wound-induced protein
c45329_g1	down	Hypothetical protein (mitochondrion)
c78255_g1	down	F-box/kelch-repeat protein At2g44130-like isoform X1
c65852_g1	down	MutS2 protein
c45955_g8	down	Conserved hypothetical protein
c43796_g2	down	–
c5135_g1	down	Hypothetical protein L484_016856
c40137_g1	down	Hypothetical protein L484_009017
c31345_g2	down	–
c41848_g1	down	Hypothetical protein L484_023631
c30479_g1	down	–
c11941_g1	down	Hsp70-binding protein 1
c36940_g1	down	Conserved hypothetical protein
c5578_g1	down	Hypothetical protein L484_003254
c31370_g1	down	3-Ketoacyl-CoA synthase 21
c44654_g1	down	Hypothetical protein L484_004530
c66547_g1	down	–
c45436_g1	down	DNA nucleotidylexotransferase
c24707_g1	down	–
c42423_g1	down	Prolyl 4-hydroxylase subunit alpha-2
c19700_g1	down	Probable 2-aminoethanethiol dioxygenase-like
c49027_g1	down	33 kDa Ribonucleoprotein
c635_g1	down	–
c41587_g1	down	–
c39705_g1	down	–
c41386_g1	down	Ubiquitin-activating enzyme E1 1

c47334_g1	down	Uncharacterized protein LOC103319422
c32820_g1	down	Hypothetical protein PRUPE_ppa006638mg
c59768_g1	down	Mitogen-activated protein kinase kinase kinase 2
c43296_g6	down	Histone H2B [<i>Nicotiana tabacum</i>]
c60077_g1	down	_
c66702_g1	down	RING-H2 finger protein ATL3
c44090_g1	down	Hypothetical protein L484_004039
c34964_g1	down	Two-component response regulator
c53451_g1	down	Cyclin-dependent kinase inhibitor 7
c44815_g1	down	Putative methyltransferase NSUN5-like isoform X1
c67083_g1	down	_
c34253_g1	down	PHD finger protein ALFIN-LIKE 5
c41614_g1	down	Hypothetical protein JCGZ_25539
c37107_g1	down	Hypothetical protein L484_021058
c44321_g1	down	Hypothetical protein JCGZ_24457
c53641_g1	down	Hypothetical protein L484_024446
c9320_g1	down	Hypothetical protein L484_021185
c44555_g1	down	50S ribosomal protein L29
c45642_g1	down	Hypothetical protein L484_004416
c56769_g1	down	_
c11381_g1	down	J1P
c15791_g1	down	Hypothetical protein L484_009906
c81297_g1	down	_
c11381_g2	down	DnaJ-like protein
c33137_g1	down	Metal tolerance protein 4
c39962_g1	down	Hypothetical protein L484_002382
c13584_g1	down	DNA-directed RNA polymerase II subunit
c38023_g2	down	Ubiquitin-conjugating enzyme E2-17 kDa 10/12 family protein
c18787_g1	down	Hypothetical protein L484_020113
c29665_g1	down	Hypothetical protein L484_013163
c40571_g2	down	Hypothetical protein PRUPE_ppa000855mg
c34095_g1	down	Hypothetical protein CICLE_v10002169mg
c59680_g1	down	SODA protein

c45554_g1	down	Upstream activation factor subunit spp27-like
c37015_g6	down	–
c46767_g3	down	Peptidyl-prolyl cis-trans isomerase FKBP65
c26056_g1	down	–
c34449_g2	down	Uncharacterized protein LOC103337247
c36979_g1	down	Proliferating cell nuclear antigen large form
c22756_g1	down	Aspartokinase 2, chloroplastic isoform X2
c47131_g1	down	Germination-specific cysteine protease 1
c44648_g1	down	Protein FLUORESCENT IN BLUE LIGHT
c72587_g1	down	ATP synthase subunit alpha
c24496_g1	down	Hypothetical protein PRUPE_ppa003710mg
c66480_g1	down	Oleosin H-isoform [<i>Ficus pumila</i> var. <i>awkeotsang</i>]
c41032_g2	down	–
c40709_g1	down	–
c44815_g2	down	Hypothetical protein L484_003775
c47624_g2	down	RING-H2 finger protein ATL5
c1562_g2	down	–
c40332_g2	down	–
c40459_g3	down	–
c40269_g2	down	RNA-binding family protein, putative isoform 1
c20122_g1	down	–
c39101_g1	down	Uncharacterized protein isoform 1
c47776_g1	down	Pollen-specific leucine-rich repeat extensin-like protein 3
c78629_g1	down	Hypothetical protein L484_023221
c19212_g1	down	–
c27944_g1	down	Hypothetical protein POPTR_0007s06150g
c45642_g3	down	Putative plastid-lipid-associated protein 8
c46053_g4	down	Histone-lysine N-methyltransferase CLF
c45486_g6	down	–
c43728_g1	down	Pyrophosphate-energized vacuolar membrane proton pump 1-like
c40098_g1	down	Hypothetical protein L484_022156
c31345_g1	down	Uncharacterized protein LOC102626192

c42014_g1	down	Putative xyloglucan
c41409_g1	down	F-box/kelch-repeat protein
c43482_g2	down	Hypothetical protein L484_021141
c42848_g2	down	Hypothetical protein L484_003351
c72159_g2	down	Hypothetical protein L484_010769
c14380_g1	down	Hypothetical protein L484_020297
c53453_g1	down	Hypothetical protein L484_014149
c80552_g1	down	–
c60552_g1	down	–
c53495_g1	down	Hypothetical protein L484_012395
c42539_g3	down	Hypothetical protein L484_019883
c44390_g3	down	Uncharacterized protein LOC102631241
c47340_g1	down	GTP-binding nuclear protein Ran1-like
c44000_g2	down	Endoplasmic reticulum oxidoreductin-1-like
c37354_g1	down	Ubiquitin-activating enzyme E1 2
c40539_g1	down	–
c25334_g1	down	–
c27048_g1	down	–
c43017_g1	down	Vesicle-associated protein 4-1
c53806_g1	down	–
c26436_g1	down	Hypothetical protein L484_005181
c40427_g2	down	–
c36979_g2	down	Proliferating cell nuclear antigen large form
c37412_g1	down	–
c42386_g1	down	–
c37896_g2	down	Influenza virus NS1A-binding protein-A-like protein
c217_g1	down	Haloacid dehalogenase-like hydrolase domain-containing protein 3
c72145_g1	down	Phospholipase C 3
c35763_g1	down	Photosystem I reaction center subunit III
c38937_g1	down	Hypothetical protein PRUPE_ppa012501mg
c31216_g1	down	Uncharacterized protein LOC102628268
c41672_g2	down	Hypothetical protein L484_013065

c34195_g1	down	–
c46310_g2	down	Hypothetical protein, partial
c73293_g1	down	Uncharacterized protein TCM_029816
c11401_g1	down	Ubiquitin-activating enzyme E1 2-like
c59593_g1	down	Pyruvate decarboxylase isozyme 1
c74957_g1	down	–
c37557_g1	down	Hypothetical protein L484_003773
c36842_g1	down	–
c45702_g1	down	Hypothetical protein L484_025669
c31893_g1	down	Uncharacterized protein LOC103336598
c54501_g1	down	Hypothetical protein L484_012802
c30450_g1	down	BTB/POZ domain-containing protein
c43244_g2	down	Hypothetical protein L484_011333
c66352_g1	down	Uncharacterized protein TCM_021870
c40875_g1	down	Hypothetical protein L484_001846
c36842_g2	down	–
c45694_g9	down	Hypothetical protein L484_004489
c38692_g1	down	–
c23527_g1	down	–
c31666_g1	down	Hypothetical protein L484_013693
c61025_g1	down	Multiprotein-bridging factor 1c
c64593_g1	down	–
c37311_g1	down	Lon protease 2
c44457_g1	down	Aspartate aminotransferase, putative
c39040_g1	down	–
c43910_g1	down	BAG family molecular chaperone regulator 5
c42533_g2	down	Hypothetical protein L484_023363
c37210_g1	down	Hypothetical protein PRUPE_ppa024646mg
c46891_g3	down	Zinc finger family protein
c36467_g1	down	Chaperone protein dnaJ 6-like
c23298_g1	down	Hypothetical protein L484_017604
c47242_g1	down	Hypothetical protein
c47148_g3	down	–

c45486_g1	down	–
c12060_g1	down	Eukaryotic translation initiation factor 5A-4
c23424_g1	down	Hypothetical protein MIMGU_mgv1a011980mg
c5724_g1	down	Pleiotropic drug resistance protein 1
c78541_g1	down	Hypothetical protein L484_011513
c46227_g1	down	–
c27279_g1	down	Hypothetical protein L484_000015
c47172_g3	down	Hypothetical protein VITISV_024648
c47349_g1	down	Hypothetical protein L484_014397
c74036_g1	down	–
c47023_g1	down	tRNA (guanosine(18)-2'-O)-methyltransferase
c46209_g10	down	–
c37406_g5	down	Transcription factor
c40975_g1	down	Hypothetical protein L484_026249
c25154_g1	down	Hypothetical protein L484_004039
c38692_g2	down	–
c29538_g2	down	–
c27562_g1	down	GATA zinc finger domain-containing protein 10
c30024_g1	down	Hypothetical protein L484_003873
c27062_g1	down	–
c19765_g1	down	–
c39999_g2	down	–
c29542_g1	down	–
c25986_g2	down	14 kDa Proline-rich protein DC2.15-like
c43738_g1	down	Hypothetical protein L484_007912
c47169_g1	down	–
c45741_g2	down	Hypothetical protein L484_013397
c29873_g1	down	Hypothetical protein L484_013585
c74405_g1	down	–
c44553_g4	down	–
c53468_g3	down	Putative methyltransferase PMT21
c46749_g1	down	Uncharacterized protein LOC103323512
c30334_g1	down	Purple acid phosphatase 15

c36345_g1	down	Conserved hypothetical protein
c9875_g1	down	Hypothetical protein L484_005314
c69858_g1	down	–
c42507_g1	down	Hypothetical protein L484_026632
c47280_g1	down	Putative membrane protein
c36512_g1	down	–
c41482_g1	down	Putative peptide/nitrate transporter
c45435_g1	down	Putative uncharacterized protein
c35641_g2	down	Fibronectin-binding protein
c45943_g3	down	Alcohol dehydrogenase
c39174_g2	down	–
c43425_g2	down	Hypothetical protein Csp_D29560
c45793_g3	down	Molybdopterin biosynthesis protein CNX3
c29573_g1	down	–
c44457_g2	down	Hypothetical protein L484_016377
c45999_g2	down	Hypothetical protein PHAVU_003G241600g

FDR \leq 0.001 and absolute value of log₂ ratio \geq 2 (2-fold) as the threshold.

*GY, young 'Green Peel' fruit; PY, young 'Purple Peel' fruit; GM, mature 'Green Peel' fruit; PM, mature

'Purple Peel' fruit.

Supplementary Figure legends

Figure S1. GO classification of unigenes of *Ficus carica* L. syconia. The results are summarized in (a) T4-P vs. T4-F; (b) T4-F vs. LD-F; (c) T4-P vs. LD-P. GO categories: Biological Process, Cellular Component and Molecular Function. T4-P, peel at stage T4; T4-F, female flower tissue at stage T4; LD-P, stage 4 peel following light-deprivation treatment; LD-F, stage 4 female flower tissue following light-deprivation treatment

Figure S1

