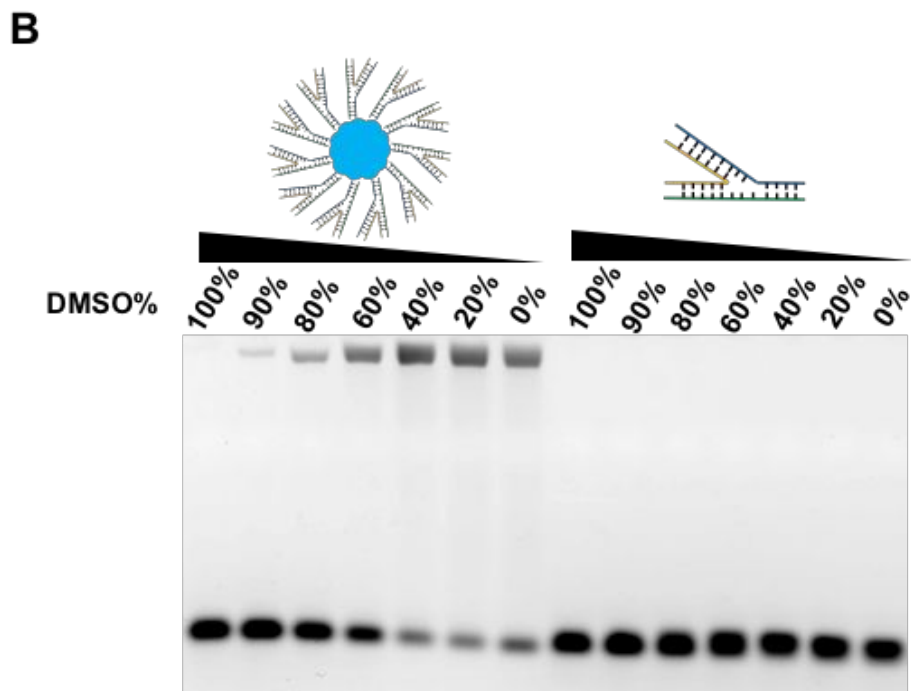
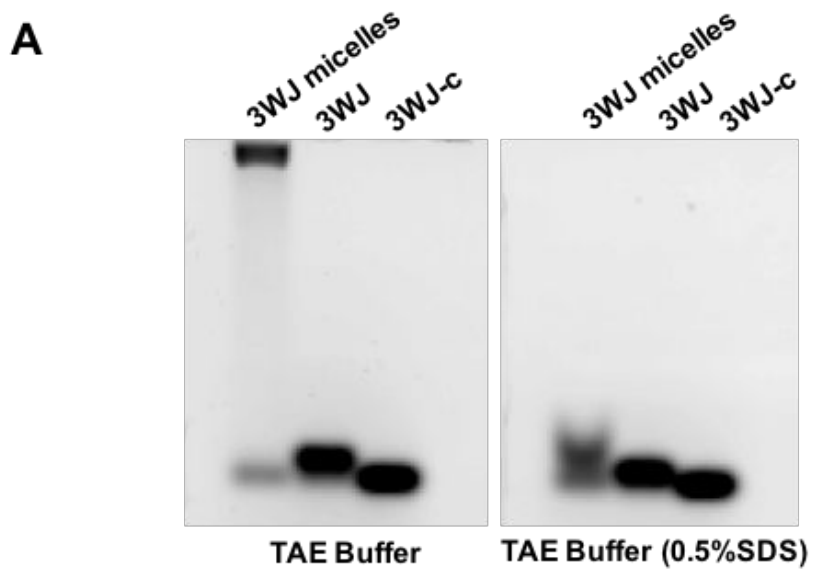


Supplementary Information

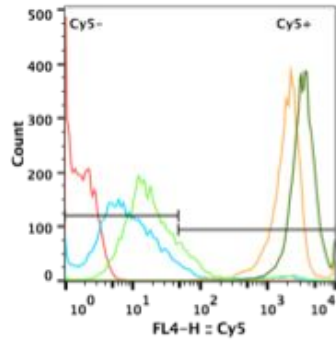
RNA Micelles for Systemic Delivery of Anti-miRNA for Cancer Targeting and Inhibition without Ligand

Hongran Yin, †,‡,§,⊥ Hongzhi Wang, †,‡,§,⊥ Zhefeng Li, †,‡,§,⊥ Dan Shu, *,†,‡,§,⊥ Peixuan Guo*,†,‡,§,⊥

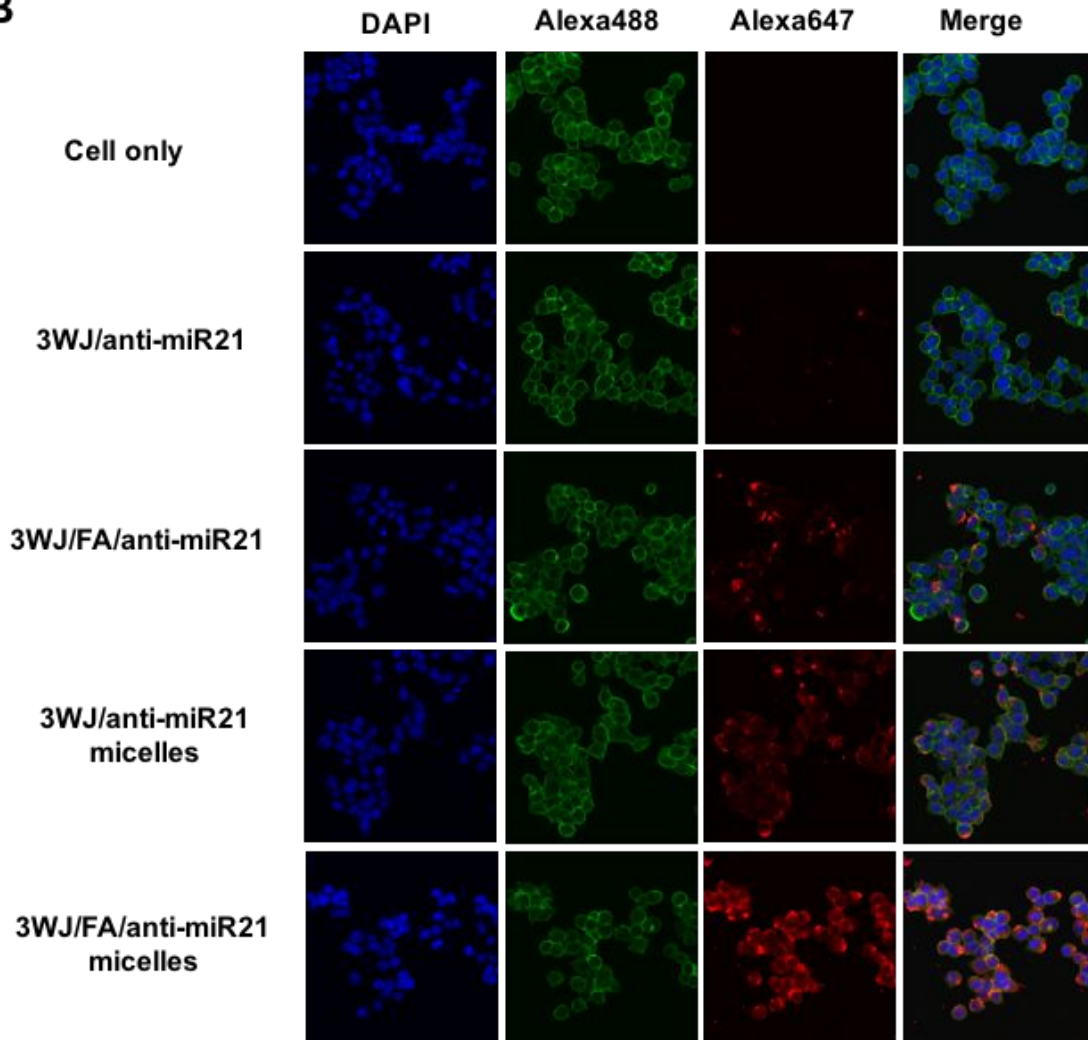
† Center for RNA Nanobiotechnology and Nanomedicine, ‡Division of Pharmaceutics and Pharmaceutical Chemistry, College of Pharmacy, §Dorothy M. Davis Heart and Lung Research Institute, College of Medicine, and ⊥James Comprehensive Cancer Center. The Ohio State University, Columbus, OH 43210, USA.



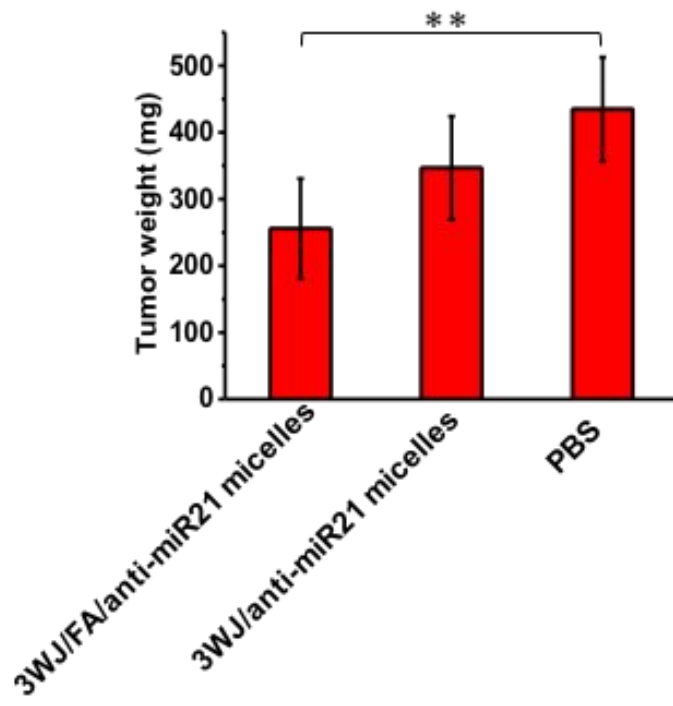
Supplementary Figure. 2. Evaluation of micelles formation by hydrophobic force.
A. 2% Agarose gel comparing 3WJ RNA micelles formation in TAE running buffer with or without 0.5% SDS. **B.** 2% Agarose gel showing 3WJ RNA micelles and 3WJ assembly in the presence of increasing percent of DMSO.

A

	3WJ/FA/anti-miR21 micelles	100%
	3WJ/FA/anti-miR21	18.9%
	3WJ/anti-miR21 micelles	99.9%
	3WJ/anti-miR21	9.74%
	Cell only	0%

B

Supplementary Figure. 3. *In vitro* binding and internalization of RNA micelles to colon cancer HT29 cell. A. Flow cytometry comparing binding affinity to HT29 cells after treatment for 1hr. **B.** Confocal microscope showing internalization profile. Blue: nuclei; Green: cytoskeleton; Red: RNA nanoparticles.



Supplementary Figure. 4. The weight of tumors harvested from mice at day10.