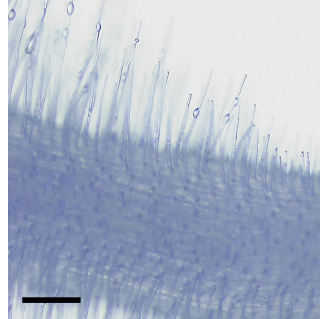
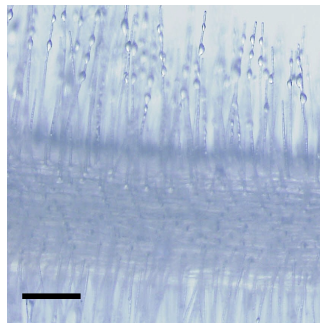


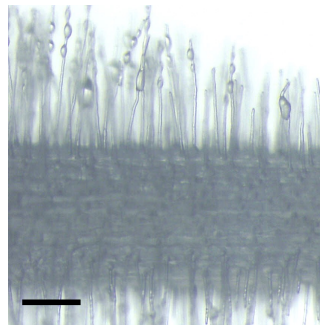
Wild type



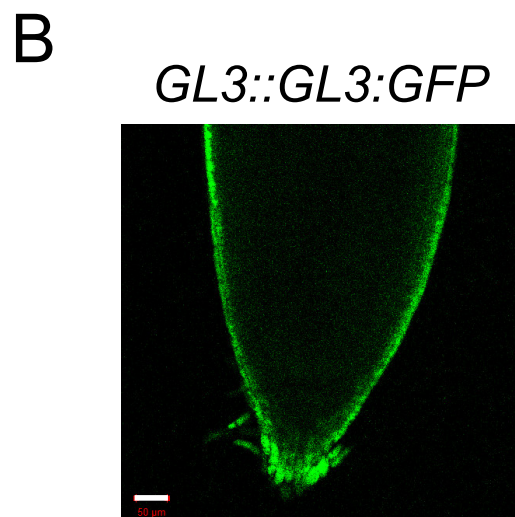
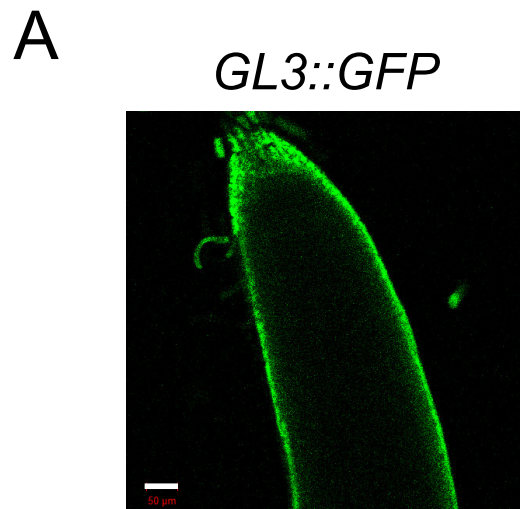
*GL3::GFP*



*GL3::GL3:GFP*

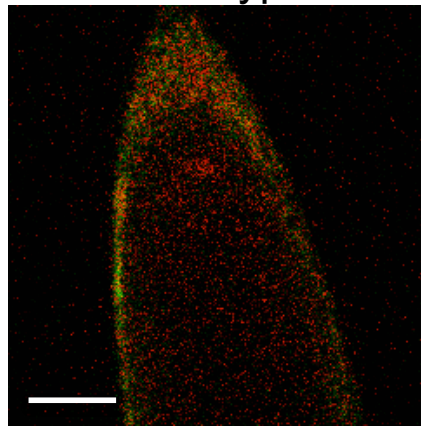


Supplemental Figure 1. Root hair phenotypes of transgenic tomato plants. Five-day-old seedling roots of wild type, *GL3::GFP*, and *GL3::GL3:GFP* plants. Scale bars: 200  $\mu\text{m}$ .



Supplemental Figure 2. Distribution of GFP fluorescence in transgenic tomato plants. (A) CLSM image showing GFP fluorescence in the root epidermis of *GL3::GFP* transgenic tomato plant. (B) CLSM image showing GFP fluorescence in the root epidermis of *GL3::GL3:GFP* transgenic tomato plant. Scale bars: 50  $\mu\text{m}$ .

Wild type



Supplemental Figure 3. Distribution of GFP fluorescence in wild type tomato plant. CLSM images showing GFP fluorescence in the root epidermis of wild type tomato plant. Scale bar: 50  $\mu\text{m}$ .