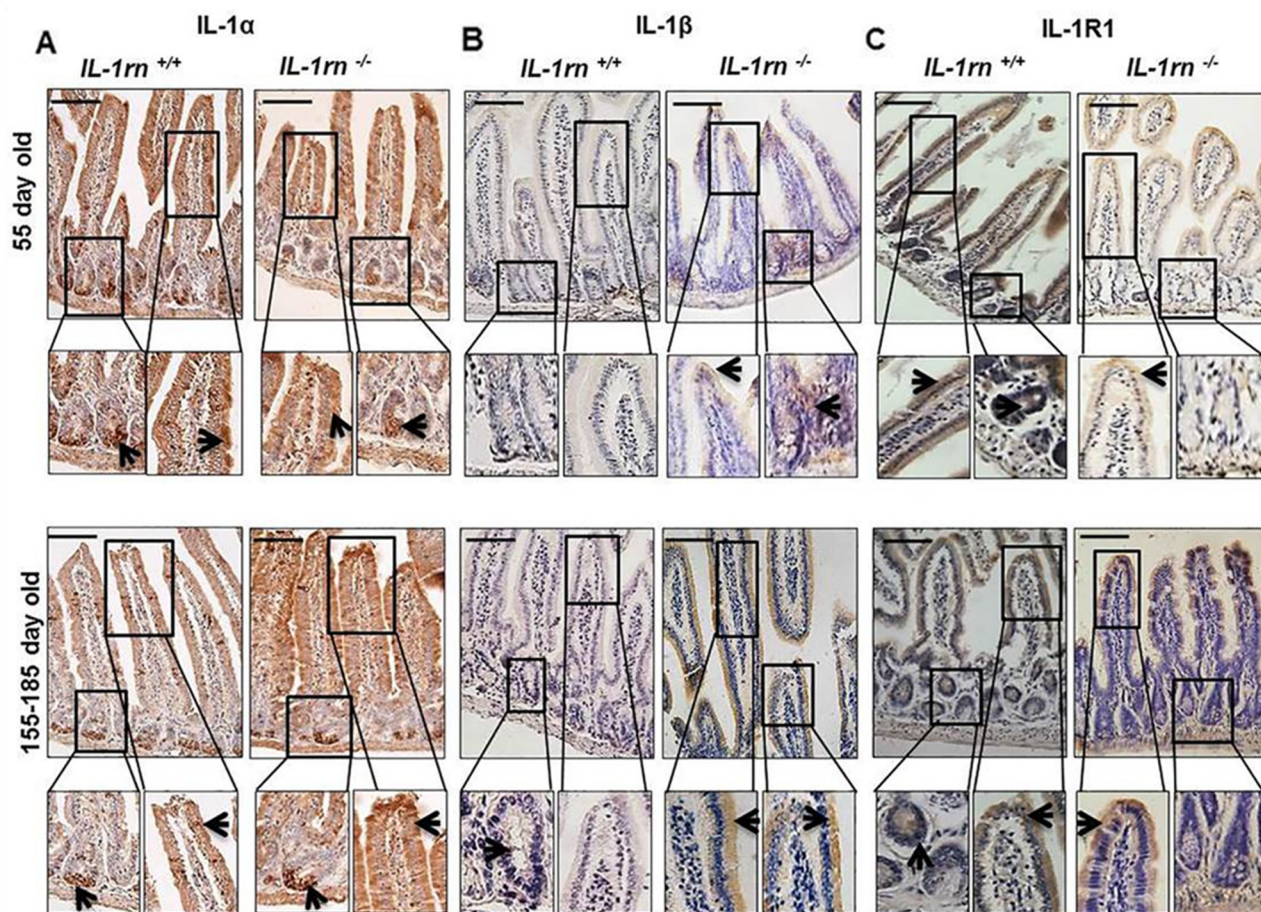
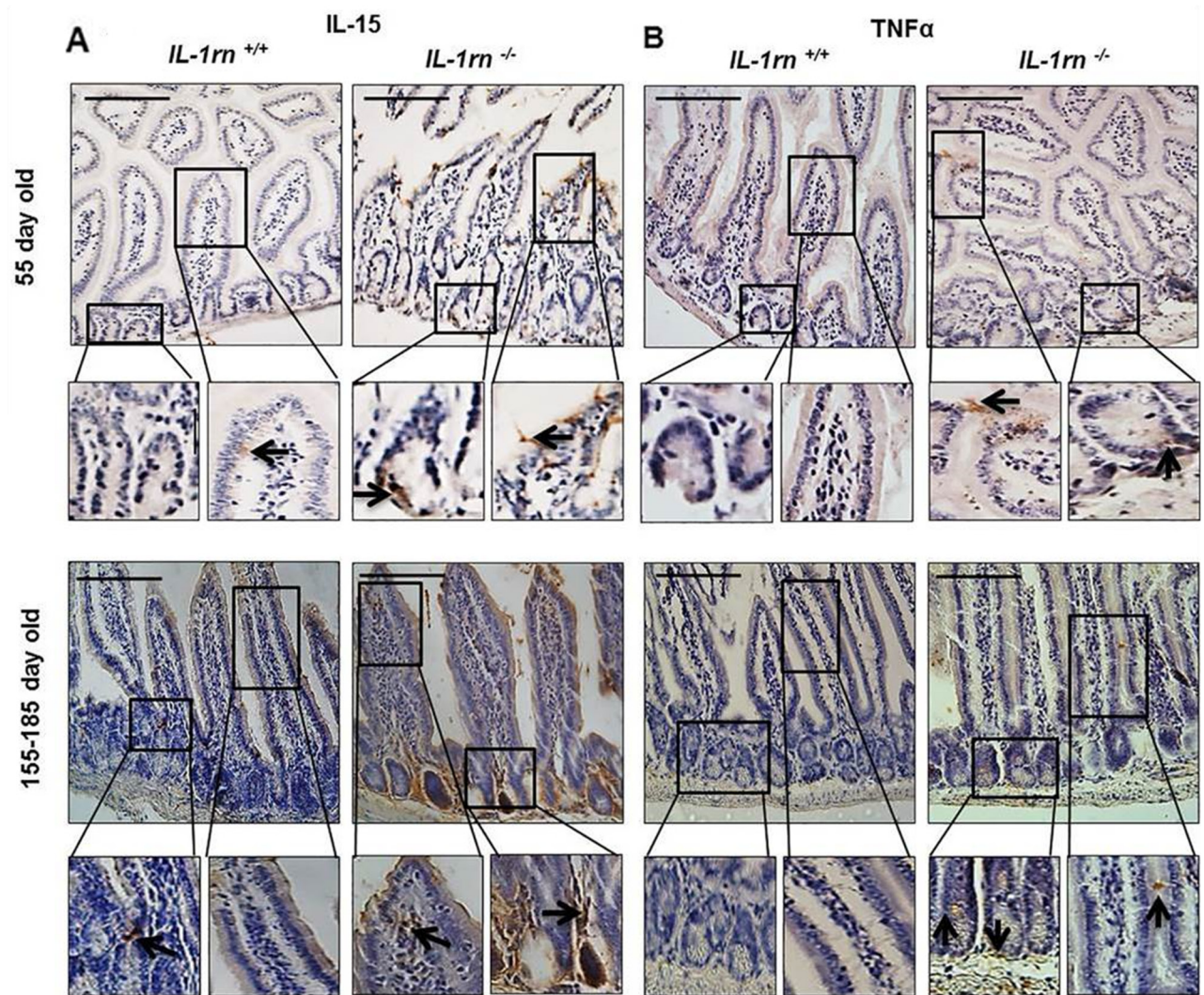


Interleukin 1 is a key driver of inflammatory bowel disease-demonstration in a murine IL-1Ra knockout model

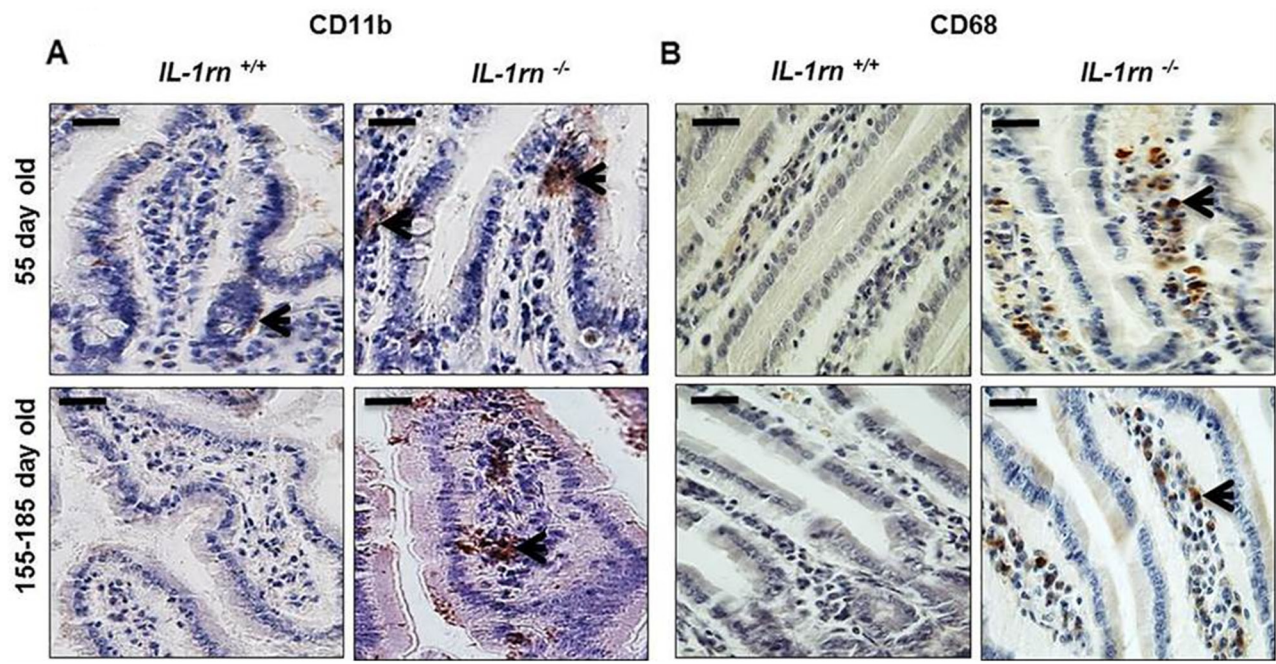
SUPPLEMENTARY MATERIALS



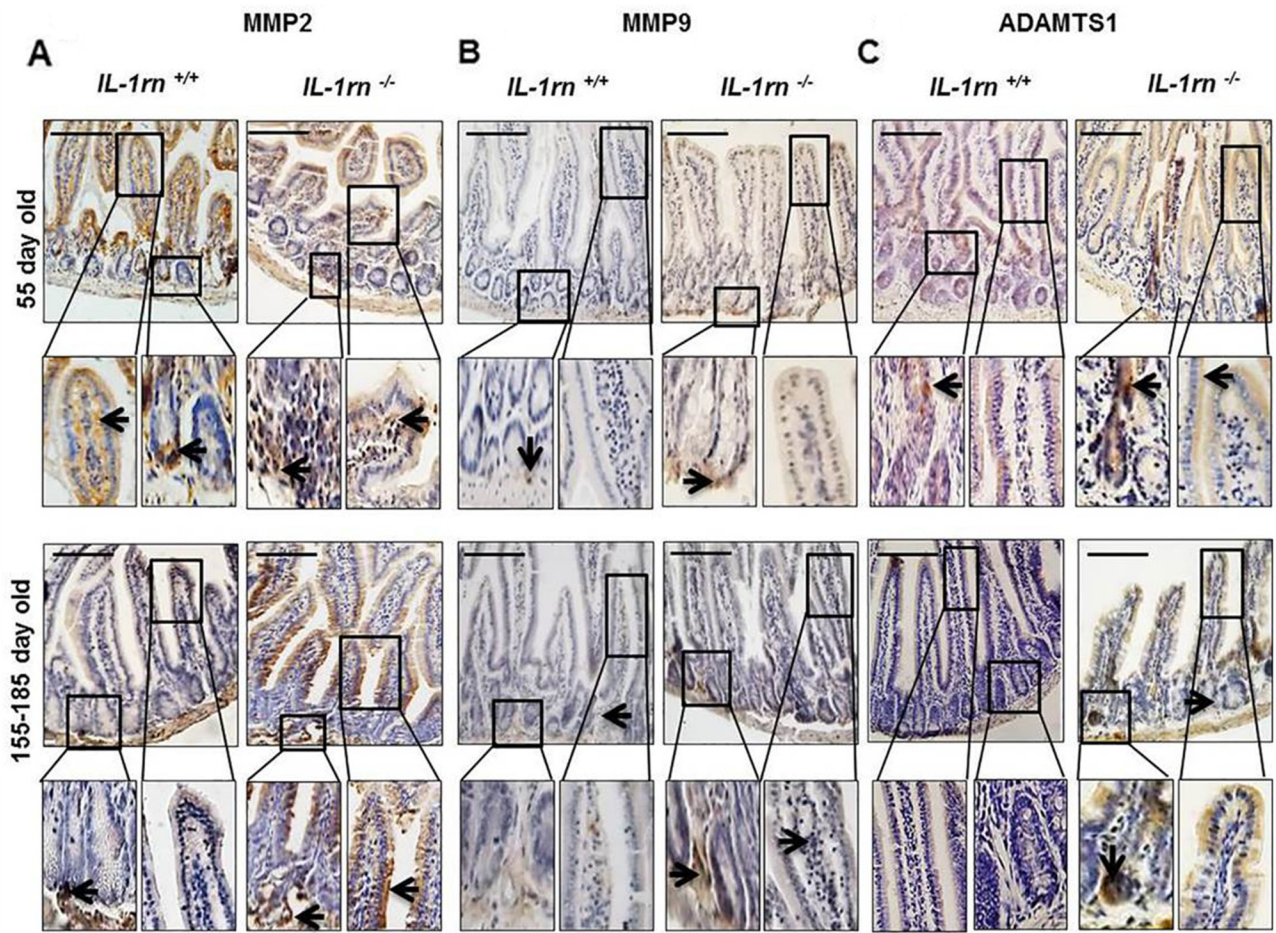
Supplementary Figure 1: Immunohistochemistry staining of the expression and localisation of pro-inflammatory cytokines. (A) IL-1α; (B) IL-1β; (C) IL-1RI in the jejunum of the 55-day old and 155-185 day old IL-1m^{-/-} mice compared with IL-1m^{+/+} mice. Cell nuclei were stained with haematoxylin (blue). Black arrows indicate immunopositivity. Scale bar = 100µm.



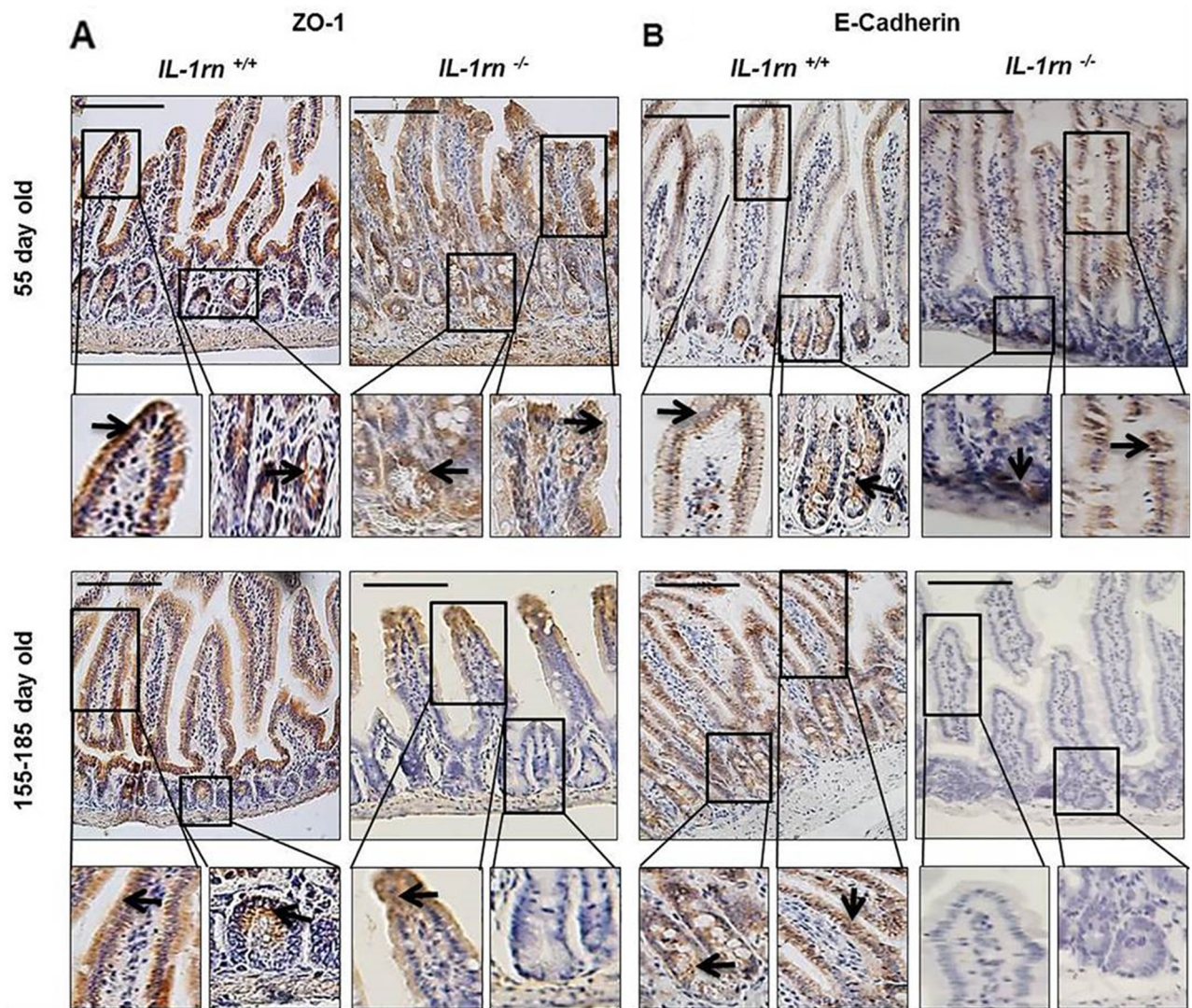
Supplementary Figure 2: Immunohistochemistry staining of the expression and localisation of pro-inflammatory cytokines. (A) IL-15; (B) TNF α in the jejunum of the 55-day old and 155-185 day old *IL-1r^{-/-}* mice compared with *IL-1r^{+/+}* mice. Cell nuclei were stained with haematoxylin (blue). Black arrows indicate immunopositivity. Scale bar = 100 μ m.



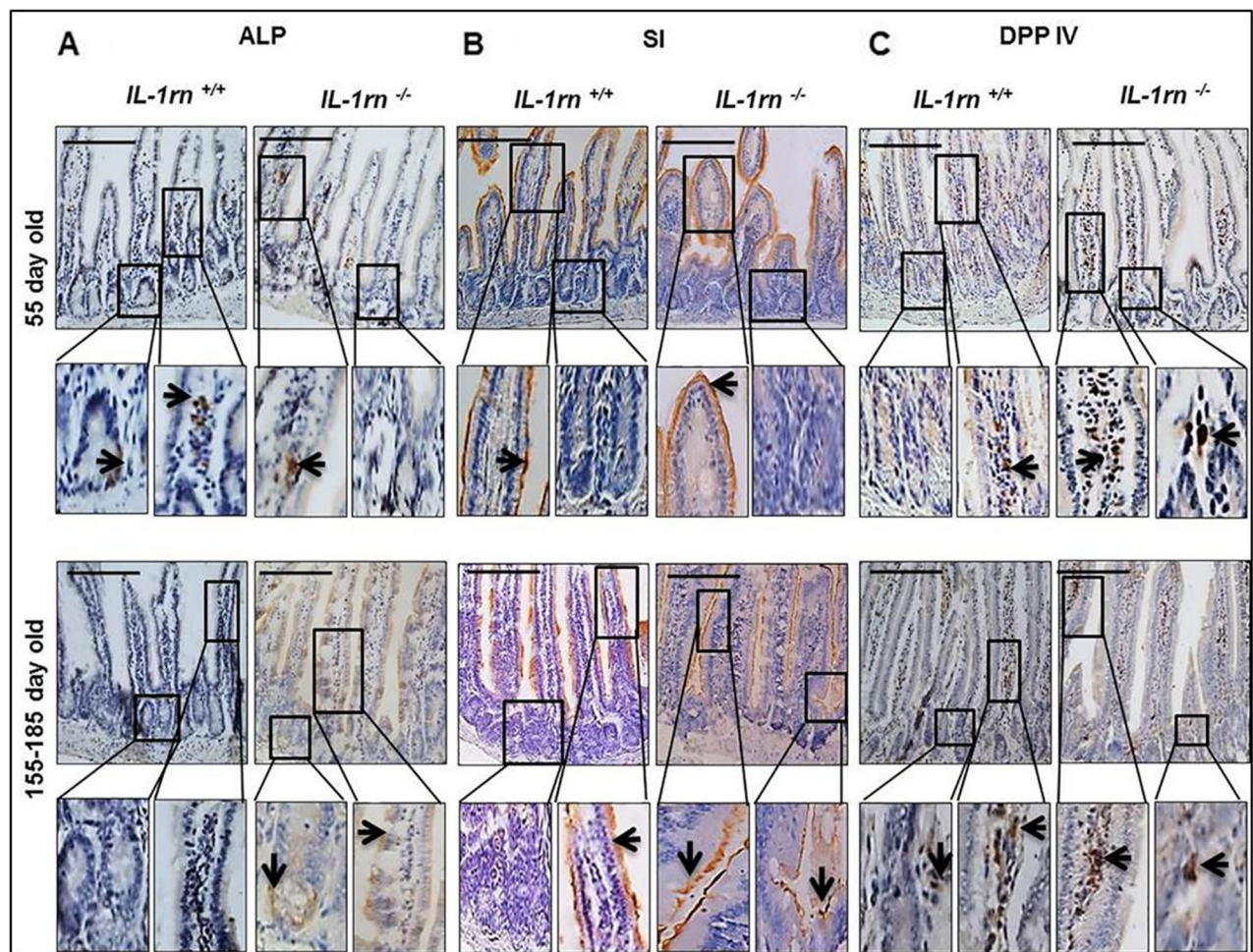
Supplementary Figure 3: Immunohistochemistry staining of infiltrating cells. (A) polymorphonuclear cells (PMNs) indicated by CD11b staining and (B) Macrophage cells (CD68) in the jejunum of the 55-day old and 155-185 day old *IL-1m*^{-/-} mice compared with *IL-1m*^{+/+} mice. Cell nuclei were stained with haematoxylin (blue). Black arrows indicate immunopositivity. Scale bar = 25 μ m.



Supplementary Figure 4: Immunohistochemistry staining of the expression and localisation of degrading enzymes. (A) MMP2; (B) MMP9; (C) ADAMTS1 in the jejunum of the 55-day old and 155-185 day old *IL-1m^{-/-}* mice compared with *IL-1m^{+/+}* mice. Cell nuclei were stained with haematoxylin (blue). Black arrows indicate immunopositivity. Scale bar = 100µm.



Supplementary Figure 5: Immunohistochemistry staining of the expression and localisation of junctional proteins. (A) ZO-1; (B) E-cadherin in the jejunum of the 55-day old and 155-185 day old *IL-1m^{-/-}* mice compared with *IL-1m^{+/+}* mice. Cell nuclei were stained with haematoxylin (blue). Black arrows indicate immunopositivity. Scale bar = 100µm.



Supplementary Figure 6: Immunohistochemistry staining of the expression and localisation of digestive enzymes. (A) ALP; **(B)** SI and **(C)** DPP IV in the jejunum of the 55-day old and 155-185 day old IL-1m^{-/-} mice compared with IL-1m^{+/+} mice. Cell nuclei were stained with haematoxylin (blue). Black arrows indicate immunopositivity. Scale bar = 100µm.