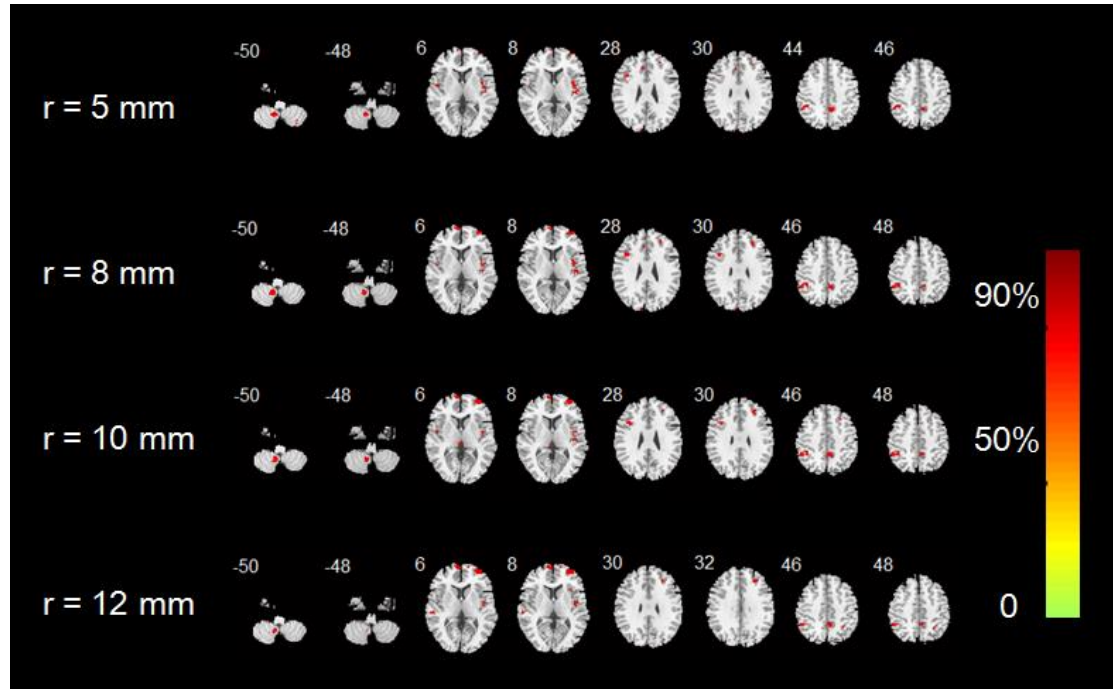


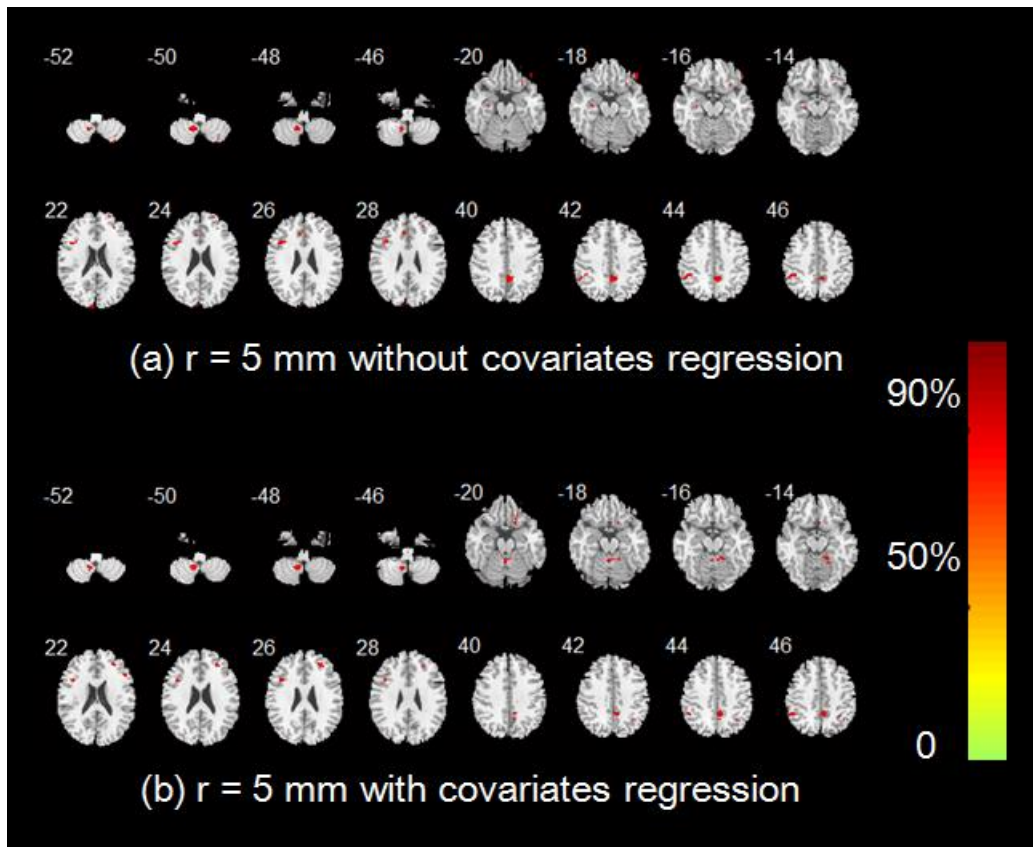
Supplementary Figures

Fig. S1. Significant clusters detected by MVPA with different radii of searchlight sphere.



The color bar indicates the classification accuracy of these brain regions. These images are displayed in the neurologic convention, with left side corresponding to left brain hemisphere.

Fig. S2. Significant clusters detected by MVPA with and without covariates regression in data preprocessing.



MVPA was conducted on a searchlight sphere with 5 mm radius. (a) Without age and gender regressed in data preprocessing; (b) With age and gender regressed in data preprocessing. MVPA identified significant clusters to classify MRP from MSP ($p < 0.0001$, cluster size > 50 , corresponding to a voxel-wise accuracy above 79%). The colorbar indicates the classification accuracy of these brain regions. These images are displayed in the neurologic convention, with the left side corresponding to the left brain hemisphere.