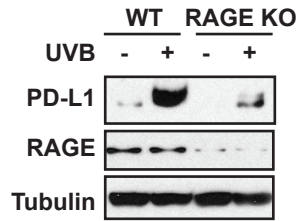
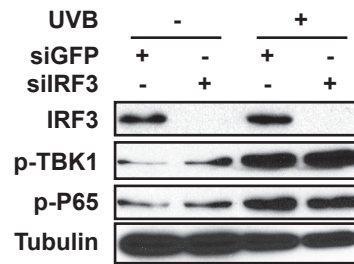
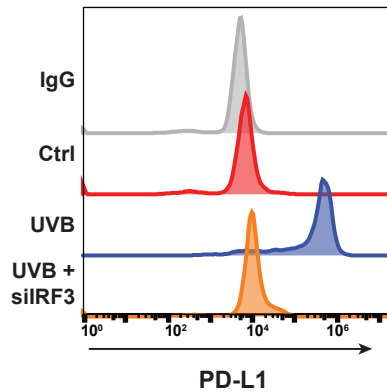


s-Figure 4

A



B



**Supplemental Figure 4.** (A) Wild type (WT) or RAGE-knockout (KO) SK-Mel-28 cells were treated with UVB (50 mJ/cm<sup>2</sup>). Whole-cell extracts were analyzed with western blot using indicated antibodies. (B) SK-Mel-28 cells, transfected with control or IRF3-targeting (siIRF3) siRNA, were treated with UVB (50 mJ/cm<sup>2</sup>). After 4 h, whole-cell extracts were analyzed with western blots (right panel). Alternatively, PD-L1 level were determined by flow cytometry at 24h after UVR (left panel).