

Figure S1. Silencing of *S100P* suppresses gastric cancer cell proliferation. (A) RT-qPCR of *S100P* in *S100P*-silenced AGS cells. (B) Proliferation assay (CCK-8) in *S100P*-silenced AGS cells. (C) Colony formation assay in *S100P*-silenced AGS cells. CCK-8, Cell Counting Kit-8. ** $P < 0.01$; *** $P < 0.001$, Student's t-test. The error bars represent the mean \pm SD.

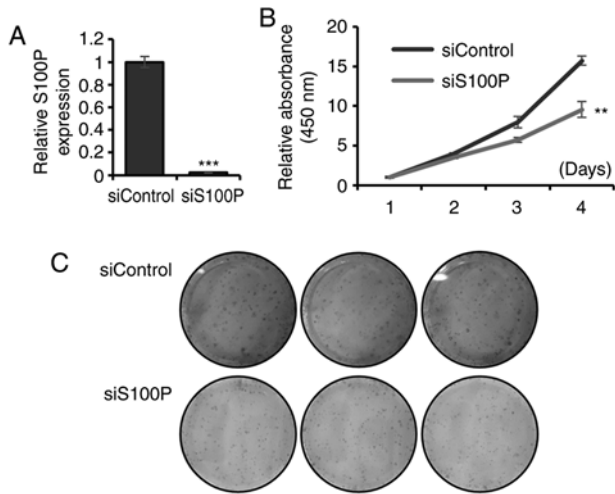


Figure S2. Association with *HOXC10* and NF- κ B pathway. (A) GSEA showing enrichment of genes in the NF- κ B pathway. (B) *TLR4* expression levels from RNA-sequencing in response to ectopic *HOXC10* overexpression in AGS cells. *HOXC10*, homeodomain-containing gene 10; GSEA, Gene Set Enrichment Analysis.

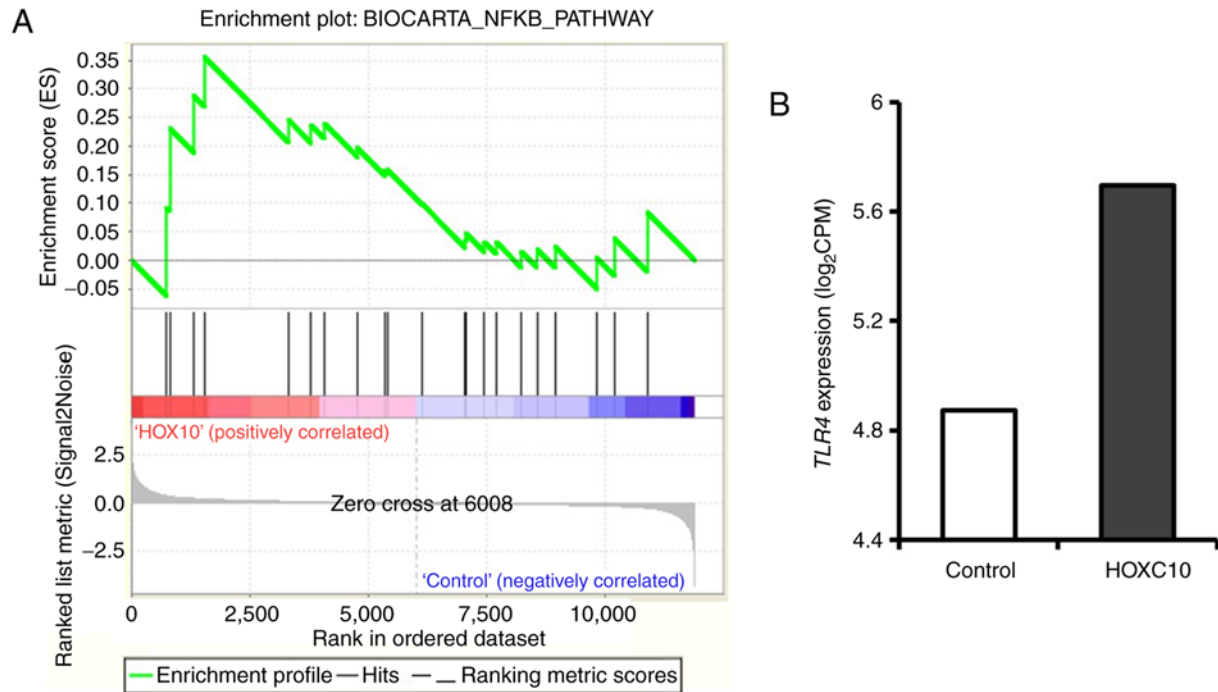


Table SI. Primer sequences for RT-PCR.

Primer	Primer sequence (5'-3')	Application
HOXC10		RT-PCR
Forward	ctcggataacgaagcgaag	
Reverse	cgctctcgcgtcaaatacat	
HOXC10 clone		Cloning
Forward	gtagctagcgccaccatgaca tgcctcgcgaatg	
Reverse	gtagcggcgcgtcaggtgaaa ttaaattggaggtc	
CST1		RT-PCR
Forward	acaaggccaccaagatgac	
Reverse	ttgacacctggattcacca	
S100P		RT-PCR
Forward	taccaggcttctgcagagt	
Reverse	ctccagggcatcatttgagt	
FSCN1		RT-PCR
Forward	actggctacacgctggagtt	
Reverse	cccattcttctggaggtca	
TRIB3		RT-PCR
Forward	tccagaaacgagctcgaagt	
Reverse	gacaaagcgacacagcttga	
CST1 promoter region		ChIP-PCR
Forward	ggggccagtccaaaattact	
Reverse	cgaactcacgagcaattgaa	
CST1 TSS region		ChIP-PCR
Forward	gctgccaagcaggataaat	
Reverse	ggagcagcagggtactcaga	
S100P promoter region		ChIP-PCR
Forward	tctccagctcctcctctct	
Reverse	ggccagagggttctttagg	
S100P TSS region		ChIP-PCR
Forward	ccagaaacgtcatcacaacg	
Reverse	gccgagaaaatgtcccact	

Table SII. Differentially expressed genes in RNA-seq data.

Gene	AGS_con	AGS_HOXC10	HOXC10/con
<i>HOXC10</i>	0.080	3.293	3.213
<i>PSG5</i>	2.163	4.549	2.387
<i>PSG4</i>	3.571	5.863	2.292
<i>TMEM52B</i>	2.319	4.306	1.987
<i>OLR1</i>	4.549	6.501	1.953
<i>UGT1A6</i>	3.120	4.996	1.876
<i>SAMD4A</i>	3.665	5.516	1.851
<i>FPR3</i>	5.322	7.073	1.751
<i>NTM</i>	1.019	2.683	1.665
<i>ANKRD1</i>	5.556	7.201	1.645
<i>PSG11</i>	3.592	5.218	1.626
<i>TRIM38</i>	1.636	3.223	1.587
<i>IGFL2</i>	4.345	5.899	1.554
<i>PRR9</i>	2.008	3.529	1.521
<i>LINC01605</i>	1.636	3.151	1.514
<i>MYL7</i>	2.460	3.967	1.506
<i>NPPB</i>	2.028	3.477	1.449
<i>FSCN1</i>	3.229	4.647	1.417
<i>CST1</i>	7.765	9.132	1.367
<i>HPGD</i>	5.654	7.010	1.356
<i>PSG7</i>	1.555	2.897	1.342
<i>PSG2</i>	3.395	4.732	1.338
<i>RAC2</i>	0.156	1.481	1.325
<i>WNT6</i>	1.059	2.363	1.304
<i>TRIB3</i>	1.019	2.259	1.240
<i>KLK8</i>	1.663	2.846	1.184
<i>SPTLC3</i>	1.583	2.751	1.168
<i>LINC01356</i>	2.399	3.554	1.155
<i>GLDC</i>	0.542	1.678	1.136
<i>FLVCR2</i>	1.945	3.065	1.120
<i>GABRA3</i>	0.000	1.088	1.088
<i>C20orf24</i>	2.884	3.967	1.082
<i>PADI1</i>	2.656	3.731	1.076
<i>TRABD2B</i>	3.092	4.161	1.069
<i>CYR61</i>	5.199	6.266	1.066
<i>FLJ22447</i>	0.296	1.342	1.046
<i>ZG16B</i>	1.408	2.447	1.039
<i>RPS17</i>	4.084	5.101	1.016
<i>PSG6</i>	2.048	3.056	1.008
<i>TMEM156</i>	0.846	1.852	1.005
<i>MTRNR2L2</i>	0.156	1.156	1.000
<i>SLC1A3</i>	4.940	5.931	0.991
<i>PSTPIP2</i>	4.667	5.655	0.988
<i>MIR6723</i>	1.209	2.196	0.987
<i>PHF11</i>	2.917	3.904	0.986
<i>LOC100507002</i>	1.787	2.773	0.986
<i>LYPD6B</i>	4.236	5.216	0.980
<i>CYSRT1</i>	1.739	2.717	0.979
<i>RPS27L</i>	6.903	7.860	0.957
<i>MATN2</i>	1.583	2.538	0.956
<i>RPL23P8</i>	1.136	2.078	0.943
<i>FAM200B</i>	3.212	4.152	0.941
<i>SPTSSA</i>	5.071	6.007	0.936
<i>MIR17HG</i>	2.399	3.330	0.931
<i>RP2</i>	5.390	6.319	0.929
<i>FIRRE</i>	1.438	2.363	0.925
<i>SNHG6</i>	4.205	5.124	0.919
<i>MXRA7</i>	0.484	1.399	0.915
<i>GGH</i>	6.190	7.102	0.913

Table SII. Continued.

Gene	AGS_con	AGS_HOXC10	HOXC10/con
<i>APCDD1L-AS1</i>	1.278	2.180	0.902
<i>LOC645166</i>	1.714	2.613	0.899
<i>LINC00648</i>	2.068	2.964	0.897
<i>DDIT4</i>	2.769	3.663	0.894
<i>SNTB1</i>	4.871	5.765	0.893
<i>SNORD4A</i>	0.296	1.189	0.892
<i>CTNNA1</i>	6.576	7.456	0.881
<i>HSPB8</i>	4.583	5.464	0.881
<i>JMJD7</i>	1.172	2.043	0.871
<i>CITED2</i>	3.848	4.713	0.865
<i>CYTH3</i>	5.974	6.833	0.859
<i>CAMK1D</i>	0.597	1.454	0.857
<i>RAD51C</i>	3.973	4.829	0.856
<i>SI00A4</i>	4.020	4.875	0.855
<i>PRICKLE2</i>	0.800	1.655	0.855
<i>CTC-338M12.4</i>	0.891	1.746	0.854
<i>PFDN4</i>	5.704	6.557	0.853
<i>IFT20</i>	3.212	4.063	0.851
<i>SNORD74</i>	1.583	2.433	0.850
<i>GABARAPL1</i>	4.103	4.953	0.850
<i>DLEU1</i>	3.449	4.295	0.846
<i>MIR22HG</i>	3.606	4.448	0.842
<i>CST4</i>	2.642	3.483	0.841
<i>CKS2</i>	7.312	8.148	0.836
<i>FAM151A</i>	0.935	1.768	0.833
<i>SNORD79</i>	0.935	1.768	0.833
<i>KCNJ13</i>	0.484	1.313	0.828
<i>LOC102723649</i>	0.424	1.252	0.827
<i>ALPK3</i>	0.296	1.122	0.826
<i>TNFAIP2</i>	5.472	6.297	0.825
<i>TLR4</i>	4.874	5.698	0.824
<i>KIAA0101</i>	6.623	7.441	0.817
<i>VGLL1</i>	1.811	2.625	0.814
<i>RWDD3</i>	2.269	3.082	0.814
<i>GSTO2</i>	4.141	4.951	0.810
<i>HEPPL1</i>	0.752	1.558	0.806
<i>SYDE1</i>	0.752	1.558	0.806
<i>PALD1</i>	0.702	1.507	0.805
<i>ATP5EP2</i>	0.542	1.342	0.800
<i>HSF2BP</i>	2.068	2.867	0.799
<i>ITGAE</i>	4.491	5.290	0.799
<i>SULT1A2</i>	0.424	1.221	0.796
<i>MYOT</i>	0.424	1.221	0.796
<i>ZFAND2A</i>	2.234	3.029	0.795
<i>CPA4</i>	1.059	1.852	0.793
<i>SEPWI</i>	7.130	7.922	0.792
<i>SNORA73B</i>	1.438	2.228	0.789
<i>MIR1304</i>	0.935	1.724	0.788
<i>SELENBP1</i>	0.891	1.678	0.787
<i>COX16</i>	2.781	3.567	0.786
<i>TGDS</i>	4.240	5.025	0.785
<i>NTN4</i>	2.199	2.983	0.784
<i>DLEU2</i>	2.862	3.645	0.783
<i>CDKN3</i>	6.681	7.460	0.779
<i>CRYZ</i>	6.622	7.401	0.778
<i>FAM103A1</i>	1.811	2.588	0.778
<i>ADAMTSL2</i>	1.098	1.872	0.775
<i>C4BPB</i>	7.074	7.849	0.774
<i>KRT7</i>	2.519	3.293	0.774

Table SII. Continued.

Gene	AGS_con	AGS_HOXC10	HOXC10/con
<i>NEAT1</i>	6.964	7.734	0.770
<i>RPL36A</i>	2.430	3.200	0.770
<i>PPP1R2</i>	7.281	8.051	0.769
<i>USMG5</i>	6.099	6.863	0.764
<i>ZGLP1</i>	0.424	1.189	0.764
<i>FAS</i>	3.185	3.948	0.763
<i>ACTG2</i>	0.846	1.607	0.761
<i>FRY</i>	0.362	1.122	0.760
<i>PSG1</i>	2.828	3.585	0.757
<i>COMMD6</i>	5.490	6.247	0.757
<i>MAMDC4</i>	2.707	3.463	0.756
<i>ST6GALNAC3</i>	3.999	4.755	0.755
<i>ZNF192P1</i>	0.702	1.454	0.752
<i>DKK1</i>	8.585	9.334	0.749
<i>SNORD56</i>	0.651	1.399	0.748
<i>SNHG20</i>	0.977	1.724	0.746
<i>SEMA3C</i>	4.788	5.532	0.745
<i>DUSP14</i>	4.880	5.622	0.742
<i>DOK3</i>	1.209	1.951	0.742
<i>YPEL5</i>	4.679	5.421	0.742
<i>C8orf59</i>	5.787	6.527	0.740
<i>TSPAN12</i>	2.756	3.496	0.740
<i>SYT7</i>	3.229	3.967	0.737
<i>ARL4D</i>	2.884	3.622	0.737
<i>GATA6-AS1</i>	2.430	3.167	0.737
<i>LOC100652768</i>	0.846	1.583	0.736
<i>PMAIP1</i>	3.203	3.938	0.735
<i>ZNF846</i>	1.555	2.289	0.735
<i>MORN4</i>	1.098	1.831	0.734
<i>NDUFAF2</i>	4.607	5.340	0.733
<i>HSPB11</i>	5.839	6.571	0.732
<i>MYBL1</i>	2.234	2.964	0.730
<i>SNORA70</i>	1.278	2.007	0.729
<i>FGG</i>	3.710	4.438	0.728
<i>SNORD5</i>	1.468	2.196	0.728
<i>ANKRD23</i>	1.019	1.746	0.727
<i>SELT</i>	7.166	7.892	0.726
<i>HSD3B1</i>	0.702	1.427	0.725
<i>PSTK</i>	1.902	2.625	0.723
<i>JAKMIP2-AS1</i>	2.028	2.751	0.723
<i>HOXB-AS3</i>	2.781	3.503	0.722
<i>IMMP1L</i>	3.092	3.812	0.721
<i>SI00P</i>	3.139	3.859	0.720
<i>SDHAF4</i>	1.987	2.706	0.719
<i>TRAPPC2B</i>	2.415	3.134	0.719
<i>CLIC3</i>	3.777	4.495	0.717
<i>TTC28-AS1</i>	2.862	3.579	0.717
<i>TUBG2</i>	2.642	3.359	0.717
<i>LOC101927768</i>	1.136	1.852	0.716
<i>TMEM14C</i>	6.591	7.306	0.715
<i>TBX5</i>	3.072	3.786	0.714
<i>AP1S3</i>	6.660	7.372	0.712
<i>SNORA44</i>	0.846	1.558	0.712
<i>KHDC1</i>	3.101	3.812	0.711
<i>FRMD4B</i>	5.611	6.322	0.711
<i>SNORD36A</i>	1.763	2.474	0.711
<i>SPON1</i>	0.542	1.252	0.710
<i>TPK1</i>	1.610	2.319	0.710
<i>AP3S1</i>	5.962	6.668	0.706

Table SII. Continued.

Gene	AGS_con	AGS_HOXC10	HOXC10/con
<i>TNFRSF25</i>	2.181	2.887	0.706
<i>LINC00883</i>	1.344	2.043	0.699
<i>LINC01234</i>	2.460	3.159	0.699
<i>CGRRF1</i>	3.619	4.317	0.698
<i>LGALS1</i>	8.384	9.082	0.697
<i>MZT1</i>	5.419	6.116	0.697
<i>LSM5</i>	5.967	6.664	0.697
<i>SSSCA1</i>	4.169	4.865	0.696
<i>PTGS2</i>	3.807	4.501	0.694
<i>CRBN</i>	4.236	4.929	0.694
<i>C2orf16</i>	0.651	1.342	0.691
<i>DNAJC15</i>	5.533	6.225	0.691
<i>ADK</i>	5.996	6.685	0.689
<i>C9orf85</i>	3.120	3.807	0.687
<i>MYEOV2</i>	5.713	6.400	0.687
<i>HOXB7</i>	0.846	1.533	0.686
<i>MOCS2</i>	4.610	5.295	0.685
<i>LRRC75A-AS1</i>	7.576	8.258	0.682
<i>TPRKB</i>	5.184	5.864	0.681
<i>ANAPC15</i>	2.816	3.496	0.680
<i>SMIM8</i>	2.816	3.496	0.680
<i>SNORD29</i>	1.172	1.852	0.679
<i>MOSPD1</i>	4.020	4.699	0.679
<i>POLR2J4</i>	1.468	2.147	0.678
<i>ITGB3BP</i>	4.353	5.030	0.677
<i>LCORL</i>	2.269	2.945	0.677
<i>RPL22L1</i>	5.095	5.771	0.677
<i>PLA2G2E</i>	1.438	2.113	0.675
<i>ZNF519</i>	1.688	2.363	0.675
<i>NDUFB3</i>	5.737	6.411	0.675
<i>C12orf29</i>	4.491	5.166	0.675
<i>IMMP2L</i>	1.902	2.576	0.675
<i>NUDT2</i>	3.062	3.737	0.674
<i>RABGGTB</i>	6.363	7.036	0.674
<i>GULP1</i>	5.800	6.473	0.673
<i>BTC</i>	1.555	2.228	0.673
<i>DMRT1</i>	1.278	1.951	0.673
<i>SNORD81</i>	0.935	1.607	0.672
<i>TMEM147-AS1</i>	1.763	2.433	0.670
<i>MIR4426</i>	2.732	3.402	0.670
<i>RPS12</i>	9.670	10.340	0.669
<i>RPS27A</i>	8.643	9.312	0.669
<i>TCEAL8</i>	4.927	5.595	0.668
<i>RPS3A</i>	10.123	10.791	0.668
<i>HOXB9</i>	4.888	5.555	0.666
<i>RPL23AP7</i>	2.756	3.422	0.666
<i>SRCIN1</i>	1.610	2.274	0.665
<i>RPL37</i>	9.318	9.982	0.664
<i>LVCAT8</i>	1.714	2.377	0.664
<i>NRP2</i>	1.468	2.130	0.662
<i>KLK6</i>	4.454	5.116	0.661
<i>YAE1D1</i>	3.536	4.197	0.661
<i>SEPT7P2</i>	2.769	3.429	0.661
<i>CCDC141</i>	0.846	1.507	0.661
<i>SI00A16</i>	7.180	7.840	0.660
<i>ZNF273</i>	3.434	4.093	0.660
<i>TYMSOS</i>	1.172	1.831	0.659
<i>SNORD28</i>	1.312	1.970	0.658
<i>LINC01089</i>	1.438	2.096	0.658

Table SII. Continued.

Gene	AGS_con	AGS_HOXC10	HOXC10/con
<i>BMP2</i>	2.839	3.496	0.657
<i>BMS1P20</i>	4.498	5.155	0.657
<i>PDCD10</i>	6.064	6.720	0.656
<i>RPS10</i>	3.371	4.027	0.655
<i>SNORD54</i>	0.362	1.017	0.655
<i>MTSS1</i>	0.597	1.252	0.654
<i>KRBOX4</i>	2.669	3.323	0.654
<i>GCSH</i>	4.797	5.450	0.654
<i>TRIM29</i>	0.977	1.631	0.654
<i>SCEL</i>	3.703	4.357	0.654
<i>SPACA6P-AS</i>	1.136	1.789	0.654
<i>LOC101927482</i>	1.408	2.061	0.653
<i>COL4A2</i>	1.834	2.487	0.653
<i>SNHG5</i>	4.751	5.404	0.653
<i>PIGL</i>	2.707	3.359	0.652
<i>DHX40</i>	4.863	5.513	0.650
<i>ARL3</i>	4.182	4.832	0.649
<i>SNORD23</i>	1.376	2.025	0.649
<i>MED7</i>	3.256	3.904	0.648
<i>IQCG</i>	1.098	1.746	0.648
<i>LOC100506688</i>	1.098	1.746	0.648
<i>CBWD3</i>	1.098	1.746	0.648
<i>PKIB</i>	0.752	1.399	0.647
<i>NDFIP2</i>	6.146	6.793	0.647
<i>THAP9</i>	2.048	2.695	0.647
<i>AP1S2</i>	2.669	3.315	0.647
<i>SH3PXD2A-AS1</i>	0.542	1.189	0.647
<i>SKAP1</i>	0.542	1.189	0.647
<i>PDE8B</i>	0.542	1.189	0.647
<i>STK17B</i>	4.846	5.492	0.646
<i>TMSB4X</i>	9.362	10.007	0.645
<i>CCDC136</i>	1.468	2.113	0.645
<i>CMC2</i>	4.424	5.068	0.644
<i>PCNA</i>	8.134	8.778	0.644
<i>RPS20</i>	9.377	10.020	0.643
<i>LOC102724312</i>	1.209	1.852	0.643
<i>CALM2</i>	9.468	10.111	0.643
<i>RPL26</i>	9.582	10.225	0.643
<i>FAM122C</i>	1.059	1.701	0.642
<i>CRADD</i>	2.533	3.175	0.642
<i>TM2D1</i>	4.393	5.035	0.642
<i>NDUFC2</i>	3.203	3.843	0.641
<i>SNORA61</i>	1.923	2.564	0.640
<i>SNORA45B</i>	0.702	1.342	0.640
<i>TMEM14A</i>	5.066	5.705	0.639
<i>RCHY1</i>	4.959	5.596	0.638
<i>RNASEH2B</i>	4.785	5.421	0.637
<i>ATP6V1G1</i>	6.302	6.939	0.636
<i>HES4</i>	2.319	2.955	0.636
<i>HNRNPU-AS1</i>	2.694	3.330	0.636
<i>POLR3F</i>	4.776	5.411	0.635
<i>DUT</i>	5.767	6.402	0.635
<i>KLHL5</i>	6.966	7.600	0.634
<i>SNORA51</i>	0.846	1.481	0.634
<i>CEP76</i>	4.708	5.342	0.634
<i>NDUFB9</i>	6.485	7.117	0.632
<i>LAMTOR3</i>	5.241	5.873	0.632
<i>GNRH1</i>	0.651	1.283	0.632
<i>ARHGAP33</i>	2.519	3.151	0.632

Table SII. Continued.

Gene	AGS_con	AGS_HOXC10	HOXC10/con
<i>YAF2</i>	3.747	4.379	0.632
<i>GINS2</i>	4.785	5.416	0.632
<i>DUSP22</i>	3.331	3.962	0.631
<i>C19orf25</i>	4.245	4.875	0.631
<i>C1D</i>	4.951	5.581	0.630
<i>VAMP1</i>	2.217	2.846	0.630
<i>STAG3L4</i>	2.828	3.456	0.629
<i>GSKIP</i>	6.005	6.634	0.629
<i>KRT17</i>	4.308	4.937	0.629
<i>LINC01572</i>	0.424	1.053	0.628
<i>GOLT1B</i>	5.243	5.871	0.627
<i>SNORA40</i>	3.395	4.022	0.627
<i>PPIL3</i>	4.300	4.927	0.627
<i>PCBD2</i>	3.500	4.127	0.627
<i>MICALL2</i>	3.716	4.343	0.627
<i>IDII</i>	5.653	6.279	0.626
<i>LOC728730</i>	1.344	1.970	0.625
<i>TGM1</i>	2.252	2.877	0.625
<i>TSPAN2</i>	0.935	1.558	0.623
<i>RFESD</i>	0.935	1.558	0.623
<i>INSIG1</i>	4.924	5.547	0.623
<i>HPN</i>	1.438	2.061	0.623
<i>CREBRF</i>	1.636	2.259	0.622
<i>NPC2</i>	6.971	7.594	0.622
<i>KCTD6</i>	3.522	4.144	0.622
<i>DPH3</i>	4.964	5.586	0.622
<i>KRT10</i>	4.249	4.870	0.621
<i>DYNLL1</i>	8.311	8.932	0.621
<i>RPL38</i>	8.279	8.900	0.621
<i>SNHG7</i>	4.717	5.338	0.621
<i>METTL2</i>	1.527	2.147	0.620
<i>TRIQQ</i>	2.547	3.167	0.620
<i>CLDN9</i>	1.059	1.678	0.619
<i>LINC00493</i>	4.932	5.551	0.619
<i>FAM46B</i>	2.928	3.548	0.619
<i>NUP37</i>	5.744	6.364	0.619
<i>LAMTOR5</i>	5.916	6.535	0.619
<i>LINC01004</i>	0.891	1.507	0.615
<i>MAD2L1</i>	6.834	7.449	0.615
<i>ZNF433</i>	1.498	2.113	0.615
<i>SEC22A</i>	3.703	4.317	0.614
<i>SNX3</i>	6.719	7.332	0.613
<i>PLGRKT</i>	3.194	3.807	0.613
<i>SLC31A2</i>	2.732	3.345	0.613
<i>GOLGA7</i>	5.083	5.695	0.612
<i>TEX30</i>	3.022	3.633	0.611
<i>TPT1</i>	11.091	11.702	0.611
<i>SNORD99</i>	0.702	1.313	0.610
<i>LINC00239</i>	0.702	1.313	0.610
<i>CAPZA2</i>	7.136	7.746	0.610
<i>TMEM68</i>	3.999	4.608	0.609
<i>FGD3</i>	2.269	2.877	0.608
<i>NDUFA4</i>	7.427	8.035	0.608
<i>PXN-AS1</i>	0.846	1.454	0.608
<i>UBE2V1</i>	0.846	1.454	0.608
<i>ANXA3</i>	8.230	8.837	0.608
<i>SI00A14</i>	6.745	7.352	0.607
<i>CCNB1IP1</i>	5.908	6.515	0.607
<i>ACOT13</i>	4.593	5.200	0.607

Table SII. Continued.

Gene	AGS_con	AGS_HOXC10	HOXC10/con
<i>MRPL45P2</i>	1.945	2.551	0.606
<i>RPS21</i>	8.903	9.509	0.606
<i>UPP1</i>	3.323	3.928	0.606
<i>OST4</i>	5.949	6.554	0.605
<i>ZFAS1</i>	6.640	7.245	0.605
<i>F3</i>	4.948	5.553	0.605
<i>CCDC88B</i>	1.098	1.701	0.603
<i>TSSK4</i>	1.098	1.701	0.603
<i>OSTC</i>	6.707	7.310	0.603
<i>TOMM5</i>	6.325	6.928	0.603
<i>ZBTB80S</i>	4.607	5.208	0.601
<i>TMEM38B</i>	3.957	4.559	0.601
<i>LOC730101</i>	3.062	3.663	0.601
<i>IFITM2</i>	2.589	1.988	-0.601
<i>FAM160A1</i>	3.536	2.936	-0.601
<i>CRYBG3</i>	4.814	4.213	-0.601
<i>PFKFB3</i>	7.042	6.440	-0.602
<i>CPLX1</i>	3.062	2.460	-0.602
<i>BTBD9</i>	4.004	3.402	-0.603
<i>APOL6</i>	1.583	0.980	-0.603
<i>GP6</i>	2.234	1.631	-0.603
<i>PARP1</i>	8.931	8.328	-0.603
<i>SPP1</i>	1.857	1.252	-0.605
<i>HEATR1</i>	7.614	7.009	-0.606
<i>TRIM2</i>	4.637	4.031	-0.606
<i>PLAUR</i>	5.023	4.417	-0.606
<i>MAN2B1</i>	6.012	5.406	-0.607
<i>DNM1</i>	2.669	2.061	-0.608
<i>GPD1</i>	2.008	1.399	-0.608
<i>TLR3</i>	2.008	1.399	-0.608
<i>DNAH10</i>	1.663	1.053	-0.610
<i>OLFM1</i>	1.663	1.053	-0.610
<i>SEMA4B</i>	4.894	4.283	-0.610
<i>ARID4B</i>	6.375	5.763	-0.612
<i>DAAM2</i>	1.209	0.596	-0.612
<i>ATP6V0E2</i>	1.209	0.596	-0.612
<i>RAB3GAP2</i>	6.919	6.306	-0.613
<i>TNFRSF1B</i>	6.169	5.555	-0.615
<i>OSBPL5</i>	2.694	2.078	-0.616
<i>MAP1A</i>	2.384	1.768	-0.616
<i>OPALIN</i>	1.059	0.442	-0.617
<i>CPT1A</i>	6.691	6.074	-0.617
<i>IPO9</i>	8.334	7.716	-0.617
<i>CLMN</i>	5.235	4.617	-0.618
<i>GANAB</i>	9.046	8.428	-0.618
<i>MUC13</i>	5.715	5.096	-0.619
<i>GATA5</i>	3.753	3.134	-0.619
<i>DEF6</i>	2.430	1.810	-0.620
<i>MTR</i>	6.166	5.545	-0.621
<i>CABP1</i>	1.312	0.691	-0.621
<i>PPP1R3F</i>	1.312	0.691	-0.621
<i>CCDC88A</i>	5.709	5.088	-0.621
<i>RAPGEF5</i>	3.830	3.208	-0.623
<i>GAS7</i>	1.527	0.903	-0.624
<i>NFIA</i>	4.683	4.058	-0.625
<i>IRX5</i>	1.172	0.546	-0.626
<i>SIGLEC12</i>	1.172	0.546	-0.626
<i>RNF213</i>	6.124	5.497	-0.627
<i>BCL9</i>	4.751	4.123	-0.628

Table SII. Continued.

Gene	AGS_con	AGS_HOXC10	HOXC10/con
<i>APLP1</i>	2.707	2.078	-0.628
<i>ORAI2</i>	3.789	3.159	-0.630
<i>TRIM14</i>	4.699	4.067	-0.632
<i>B3GAT1</i>	1.019	0.386	-0.632
<i>LHX1</i>	1.019	0.386	-0.632
<i>FKBP9P1</i>	1.019	0.386	-0.632
<i>VILL</i>	2.694	2.061	-0.633
<i>LENG9</i>	2.781	2.147	-0.634
<i>SPDEF</i>	1.278	0.644	-0.634
<i>JUNB</i>	5.800	5.166	-0.634
<i>THRA</i>	5.031	4.396	-0.635
<i>LOC100130992</i>	1.688	1.053	-0.636
<i>LIPH</i>	4.916	4.279	-0.636
<i>DIRAS2</i>	1.136	0.495	-0.641
<i>HEY1</i>	1.376	0.736	-0.641
<i>GNAO1</i>	1.583	0.942	-0.641
<i>CPE</i>	2.199	1.558	-0.641
<i>SLCO2B1</i>	3.842	3.200	-0.642
<i>MGAT3</i>	3.426	2.783	-0.643
<i>RAPGEFL1</i>	3.256	2.613	-0.643
<i>ST3GAL5</i>	2.669	2.025	-0.644
<i>RASGEF1B</i>	3.550	2.907	-0.644
<i>DNAJC22</i>	5.908	5.263	-0.645
<i>ADORA1</i>	3.022	2.377	-0.645
<i>LURAP1L</i>	4.337	3.692	-0.645
<i>TLN2</i>	6.490	5.844	-0.646
<i>AKNA</i>	3.363	2.717	-0.646
<i>SETSIP</i>	1.663	1.017	-0.646
<i>MYH14</i>	7.946	7.300	-0.646
<i>MSLN</i>	5.376	4.730	-0.646
<i>IQCE</i>	5.702	5.055	-0.648
<i>LPGAT1</i>	6.651	6.001	-0.651
<i>LY6D</i>	1.555	0.903	-0.652
<i>GCNT3</i>	4.169	3.516	-0.653
<i>RASSF2</i>	1.344	0.691	-0.654
<i>NCDN</i>	4.607	3.952	-0.655
<i>ATP1A3</i>	1.811	1.156	-0.655
<i>APOE</i>	2.163	1.507	-0.656
<i>SIPR3</i>	4.569	3.914	-0.656
<i>ADAMTS6</i>	1.098	0.442	-0.656
<i>EDIL3</i>	1.098	0.442	-0.656
<i>ERMN</i>	1.438	0.779	-0.659
<i>EPB41L2</i>	7.625	6.966	-0.659
<i>RSG1</i>	1.945	1.283	-0.662
<i>RNASE4</i>	1.527	0.863	-0.664
<i>MLXIPL</i>	1.527	0.863	-0.664
<i>GPM6B</i>	2.319	1.655	-0.664
<i>GGT1</i>	1.787	1.122	-0.665
<i>IGF2R</i>	6.803	6.137	-0.666
<i>ITGA2</i>	8.028	7.361	-0.666
<i>JHDM1D-AS1</i>	3.072	2.405	-0.667
<i>SHANK3</i>	2.781	2.113	-0.668
<i>ADSSL1</i>	1.610	0.942	-0.668
<i>RFLL</i>	2.252	1.583	-0.669
<i>CDC42BPA</i>	7.773	7.103	-0.669
<i>VSNL1</i>	4.583	3.914	-0.670
<i>RAB11FIP1</i>	6.992	6.322	-0.670
<i>NRXN2</i>	1.059	0.386	-0.672
<i>OAS3</i>	7.163	6.489	-0.674

Table SII. Continued.

Gene	AGS_con	AGS_HOXC10	HOXC10/con
<i>MAP3K5</i>	4.004	3.330	-0.674
<i>ARHGEF19</i>	1.987	1.313	-0.674
<i>OGDHL</i>	3.639	2.964	-0.674
<i>GJB2</i>	4.733	4.058	-0.675
<i>PCDHGB1</i>	1.498	0.822	-0.676
<i>HSPG2</i>	8.544	7.868	-0.676
<i>KCNJ10</i>	1.172	0.495	-0.677
<i>BCOR</i>	5.963	5.284	-0.679
<i>SAMD5</i>	7.289	6.609	-0.680
<i>EFR3B</i>	1.902	1.221	-0.681
<i>LRG1</i>	3.936	3.255	-0.681
<i>MICALCL</i>	2.971	2.289	-0.681
<i>IL17RA</i>	4.855	4.173	-0.681
<i>PLCE1</i>	3.881	3.200	-0.682
<i>NBPF8</i>	2.163	1.481	-0.682
<i>TAGLN3</i>	1.278	0.596	-0.682
<i>FRMD6</i>	3.331	2.649	-0.682
<i>DUSP2</i>	4.573	3.889	-0.684
<i>ITGB4</i>	7.058	6.374	-0.684
<i>CAMK2B</i>	1.376	0.691	-0.686
<i>QKI</i>	1.739	1.053	-0.686
<i>OLFM2</i>	2.269	1.583	-0.686
<i>DOCK11</i>	4.607	3.919	-0.688
<i>SHANK2</i>	3.418	2.729	-0.690
<i>LPAR1</i>	1.019	0.329	-0.690
<i>HSPA1A</i>	2.199	1.507	-0.692
<i>CPEB2</i>	2.547	1.852	-0.695
<i>FAM107A</i>	2.792	2.096	-0.697
<i>ATP2B2</i>	1.244	0.546	-0.697
<i>CRIP2</i>	3.898	3.200	-0.698
<i>PSD3</i>	6.113	5.414	-0.699
<i>FZD4</i>	2.896	2.196	-0.700
<i>MT1E</i>	1.344	0.644	-0.700
<i>CREB3L1</i>	2.490	1.789	-0.701
<i>BCAS1</i>	1.857	1.156	-0.701
<i>ZNF704</i>	4.773	4.071	-0.701
<i>CKMT1A</i>	2.234	1.533	-0.702
<i>GRAMD1B</i>	2.851	2.147	-0.704
<i>FOS</i>	5.876	5.172	-0.704
<i>GLG1</i>	7.460	6.754	-0.706
<i>SMAD1</i>	4.108	3.402	-0.706
<i>MTURN</i>	4.178	3.470	-0.708
<i>PDE11A</i>	1.688	0.980	-0.709
<i>SNCB</i>	1.688	0.980	-0.709
<i>LOC100129550</i>	1.763	1.053	-0.710
<i>MMP15</i>	6.136	5.425	-0.711
<i>PBX1</i>	5.477	4.765	-0.712
<i>CHD3</i>	7.589	6.876	-0.713
<i>ANK3</i>	5.950	5.236	-0.714
<i>CORO2A</i>	5.587	4.873	-0.715
<i>KIAA0922</i>	3.807	3.091	-0.716
<i>SIRPA</i>	1.408	0.691	-0.717
<i>NUAK2</i>	4.736	4.018	-0.718
<i>VRTN</i>	2.302	1.583	-0.720
<i>TUBB4A</i>	2.399	1.678	-0.721
<i>INPP4B</i>	1.879	1.156	-0.724
<i>HHAT</i>	2.008	1.283	-0.725
<i>MAML2</i>	2.804	2.078	-0.726
<i>AKR1B10</i>	2.181	1.454	-0.727

Table SII. Continued.

Gene	AGS_con	AGS_HOXC10	HOXC10/con
<i>SLC45A3</i>	4.647	3.919	-0.728
<i>IQGAP1</i>	8.965	8.236	-0.729
<i>HPSE</i>	3.753	3.020	-0.733
<i>AATK</i>	1.555	0.822	-0.733
<i>HHLA2</i>	1.714	0.980	-0.734
<i>SLC43A2</i>	6.301	5.566	-0.736
<i>TTBK2</i>	2.504	1.768	-0.737
<i>PLEKHB1</i>	2.950	2.212	-0.738
<i>VTN</i>	8.499	7.759	-0.740
<i>LFNG</i>	4.990	4.249	-0.741
<i>MAP2</i>	2.732	1.988	-0.744
<i>ARFGEF3</i>	3.968	3.223	-0.745
<i>ENO2</i>	1.966	1.221	-0.746
<i>SOX2-OT</i>	1.438	0.691	-0.748
<i>PDZD4</i>	1.244	0.495	-0.749
<i>PADI2</i>	1.136	0.386	-0.749
<i>MOG</i>	1.136	0.386	-0.749
<i>MIAT</i>	1.019	0.269	-0.750
<i>SECTM1</i>	3.893	3.142	-0.750
<i>GALNT18</i>	3.697	2.945	-0.752
<i>NAB2</i>	5.374	4.620	-0.754
<i>CENPF</i>	8.221	7.466	-0.755
<i>ERBB3</i>	6.792	6.037	-0.755
<i>HMG5</i>	2.781	2.025	-0.755
<i>CKMT1B</i>	2.319	1.558	-0.761
<i>CNTNAP1</i>	2.319	1.558	-0.761
<i>APBB1</i>	1.498	0.736	-0.762
<i>FAM134B</i>	3.783	3.020	-0.763
<i>SLPI</i>	4.266	3.503	-0.763
<i>FAT1</i>	8.530	7.766	-0.764
<i>KDM7A</i>	5.687	4.922	-0.764
<i>CHGA</i>	1.312	0.546	-0.765
<i>SLC17A7</i>	2.048	1.283	-0.765
<i>ERAP1</i>	5.033	4.268	-0.765
<i>ZNF710</i>	4.573	3.807	-0.766
<i>GPM6A</i>	1.923	1.156	-0.768
<i>SIPAIL2</i>	6.844	6.075	-0.769
<i>TUBA1A</i>	3.323	2.551	-0.772
<i>PTAFR</i>	3.893	3.117	-0.776
<i>EPAS1</i>	5.720	4.944	-0.776
<i>ACTL8</i>	2.384	1.607	-0.776
<i>ZNF516</i>	3.529	2.751	-0.778
<i>SRGAP3</i>	2.181	1.399	-0.782
<i>GDA</i>	6.673	5.889	-0.784
<i>THY1</i>	1.688	0.903	-0.785
<i>ATP2B4</i>	7.603	6.816	-0.787
<i>NREP</i>	2.756	1.970	-0.787
<i>SHH</i>	1.059	0.269	-0.790
<i>VDR</i>	2.971	2.180	-0.791
<i>CD44</i>	5.812	5.019	-0.793
<i>CEACAM1</i>	4.860	4.067	-0.793
<i>CXorf57</i>	1.438	0.644	-0.794
<i>ARAP3</i>	3.500	2.706	-0.794
<i>ZBED6</i>	5.016	4.221	-0.794
<i>NRGN</i>	3.158	2.363	-0.794
<i>SYT1</i>	1.987	1.189	-0.798
<i>TTC14</i>	3.925	3.125	-0.800
<i>MIA3</i>	7.060	6.252	-0.808
<i>FEZ1</i>	1.714	0.903	-0.811

Table SII. Continued.

Gene	AGS_con	AGS_HOXC10	HOXC10/con
<i>ATP2A3</i>	3.203	2.391	-0.811
<i>SAMD11</i>	1.408	0.596	-0.811
<i>FOXA1</i>	5.997	5.184	-0.813
<i>ECE1</i>	7.375	6.560	-0.816
<i>PACSIN1</i>	1.312	0.495	-0.816
<i>CNTN2</i>	1.555	0.736	-0.819
<i>IKZF3</i>	2.732	1.912	-0.820
<i>TCAF1</i>	5.931	5.111	-0.820
<i>NCAM1</i>	1.763	0.942	-0.821
<i>ARSJ</i>	1.209	0.386	-0.822
<i>TMC5</i>	6.344	5.521	-0.823
<i>SUSD4</i>	3.626	2.794	-0.832
<i>GPR161</i>	6.442	5.610	-0.832
<i>ADGRA2</i>	3.092	2.259	-0.833
<i>CDK18</i>	4.025	3.192	-0.833
<i>LGI3</i>	1.278	0.442	-0.836
<i>SIX4</i>	2.656	1.810	-0.845
<i>NTN1</i>	4.852	4.004	-0.848
<i>UCHL1</i>	1.902	1.053	-0.849
<i>SNAP25</i>	3.139	2.289	-0.850
<i>PTP4A3</i>	2.681	1.831	-0.850
<i>PCDH7</i>	7.789	6.936	-0.853
<i>ATP7B</i>	3.478	2.625	-0.854
<i>EPHB2</i>	5.492	4.638	-0.854
<i>CEP170</i>	7.850	6.994	-0.856
<i>MAG</i>	1.636	0.779	-0.857
<i>CD82</i>	2.981	2.113	-0.868
<i>PIK3C2B</i>	6.891	6.021	-0.869
<i>GAP43</i>	1.312	0.442	-0.870
<i>MFSD6</i>	4.916	4.040	-0.875
<i>HCN2</i>	1.376	0.495	-0.881
<i>OAS2</i>	1.787	0.903	-0.884
<i>PELI2</i>	5.095	4.209	-0.885
<i>TRABD2A</i>	5.104	4.217	-0.887
<i>TNFRSF11A</i>	3.652	2.762	-0.890
<i>NAT8L</i>	1.583	0.691	-0.892
<i>MRAP2</i>	1.945	1.053	-0.892
<i>CDKN1C</i>	2.504	1.607	-0.897
<i>SLC12A2</i>	9.952	9.044	-0.908
<i>TTYH1</i>	1.555	0.644	-0.911
<i>TPPP</i>	3.082	2.163	-0.919
<i>TNSI</i>	3.691	2.762	-0.929
<i>SLC1A4</i>	3.363	2.433	-0.930
<i>KDM5B</i>	7.403	6.470	-0.933
<i>OAS1</i>	5.544	4.611	-0.933
<i>TBC1D30</i>	4.462	3.522	-0.939
<i>DDX60</i>	4.779	3.838	-0.940
<i>CACNA1D</i>	3.363	2.419	-0.944
<i>PLCH1</i>	3.418	2.474	-0.945
<i>CDH12</i>	1.019	0.072	-0.947
<i>SLC9A2</i>	5.104	4.152	-0.952
<i>SNCAIP</i>	4.929	3.967	-0.963
<i>PCSK1N</i>	1.172	0.206	-0.966
<i>RRBP1</i>	8.926	7.958	-0.968
<i>SOX6</i>	1.468	0.495	-0.973
<i>ZNF467</i>	1.244	0.269	-0.975
<i>FBLN2</i>	2.851	1.872	-0.978
<i>CDH17</i>	8.435	7.452	-0.983
<i>KCNH3</i>	2.302	1.313	-0.990

Table SII. Continued.

Gene	AGS_con	AGS_HOXC10	HOXC10/con
<i>EPHB6</i>	2.181	1.189	-0.992
<i>EGR1</i>	6.862	5.864	-0.998
<i>MBP</i>	6.247	5.248	-0.999
<i>RGS5</i>	3.659	2.649	-1.010
<i>ACOT1</i>	1.834	0.822	-1.012
<i>GFAP</i>	5.142	4.123	-1.019
<i>NT5C3B</i>	4.874	3.854	-1.021
<i>UST</i>	3.264	2.243	-1.021
<i>CPLX2</i>	2.399	1.371	-1.028
<i>PCDH1</i>	6.986	5.956	-1.029
<i>DOCK4</i>	2.873	1.831	-1.042
<i>ATP10D</i>	1.739	0.691	-1.048
<i>KIF1A</i>	2.816	1.768	-1.048
<i>CREB3L3</i>	2.302	1.252	-1.051
<i>UNC5B</i>	4.045	2.993	-1.052
<i>ABCC3</i>	5.156	4.102	-1.054
<i>C6orf222</i>	1.923	0.863	-1.060
<i>IRF8</i>	4.969	3.904	-1.065
<i>KCNK10</i>	1.344	0.269	-1.076
<i>MPP6</i>	1.583	0.495	-1.088
<i>PTGDS</i>	2.744	1.655	-1.089
<i>ALOX5</i>	2.907	1.810	-1.096
<i>FGB</i>	4.108	3.011	-1.097
<i>CEACAM6</i>	6.916	5.814	-1.102
<i>TMEM65</i>	3.578	2.474	-1.105
<i>ANXA10</i>	1.312	0.206	-1.105
<i>SLC34A2</i>	1.376	0.269	-1.108
<i>TBC1D9</i>	2.971	1.852	-1.119
<i>PPARGC1A</i>	2.756	1.631	-1.125
<i>GALC</i>	10.014	8.885	-1.129
<i>GSDMB</i>	3.002	1.872	-1.130
<i>F5</i>	7.034	5.898	-1.135
<i>AKAP5</i>	4.214	3.074	-1.140
<i>KCNE3</i>	5.038	3.894	-1.144
<i>EEF1A2</i>	2.008	0.863	-1.145
<i>RIN3</i>	3.571	2.419	-1.152
<i>NXPH4</i>	4.108	2.955	-1.153
<i>ACOT2</i>	3.130	1.970	-1.160
<i>GPX2</i>	5.523	4.357	-1.166
<i>SLC6A19</i>	1.902	0.736	-1.166
<i>DLX4</i>	1.923	0.736	-1.188
<i>NLRP7</i>	3.994	2.794	-1.200
<i>MPP5</i>	4.937	3.731	-1.206
<i>CEMIP</i>	3.550	2.334	-1.216
<i>TIMP2</i>	5.755	4.536	-1.219
<i>PLEKHA4</i>	4.624	3.402	-1.222
<i>RTN4RL2</i>	3.002	1.768	-1.234
<i>MUC1</i>	5.649	4.414	-1.236
<i>SLFN5</i>	2.960	1.724	-1.237
<i>PTPN13</i>	3.092	1.852	-1.240
<i>LRRC37A4P</i>	2.144	0.903	-1.241
<i>PLP1</i>	4.676	3.416	-1.261
<i>TF</i>	2.384	1.122	-1.261
<i>GPHN</i>	2.445	1.156	-1.289
<i>CTSE</i>	10.080	8.780	-1.299
<i>DMBT1</i>	3.515	2.212	-1.303
<i>LGALS4</i>	5.003	3.680	-1.323
<i>HR</i>	4.953	3.628	-1.326
<i>SLC4A4</i>	3.120	1.789	-1.331

Table SII. Continued.

Gene	AGS_con	AGS_HOXC10	HOXC10/con
<i>SLCO3A1</i>	2.732	1.399	-1.333
<i>MECOM</i>	5.440	4.097	-1.342
<i>SLC29A4</i>	1.987	0.644	-1.343
<i>CEACAM5</i>	3.456	2.096	-1.360
<i>TBKBP1</i>	3.339	1.970	-1.370
<i>ESRRG</i>	2.217	0.822	-1.395
<i>TANC2</i>	4.377	2.926	-1.451
<i>HK1</i>	4.877	3.416	-1.462
<i>HAS3</i>	6.866	5.404	-1.462
<i>TP53I11</i>	5.386	3.869	-1.517
<i>PRSS12</i>	6.145	4.626	-1.519
<i>SPINK1</i>	2.756	1.221	-1.536
<i>IGFBP2</i>	5.003	3.416	-1.587
<i>GALNT5</i>	4.132	2.538	-1.593
<i>APOL1</i>	6.095	4.501	-1.594
<i>PVRL3</i>	3.957	2.334	-1.623
<i>TMPRSS2</i>	4.559	2.907	-1.652
<i>TOX3</i>	2.217	0.495	-1.722
<i>HEPH</i>	3.331	1.583	-1.748
<i>NEO1</i>	5.603	3.843	-1.759
<i>REG1A</i>	3.418	1.631	-1.787
<i>MIR6087</i>	4.520	2.729	-1.791
<i>XYLT1</i>	3.331	1.507	-1.824
<i>LYZ</i>	10.456	8.596	-1.860
<i>MMP1</i>	5.213	3.278	-1.935

HOXC10, homeodomain-containing gene 10.

Table SIII. Predicted target genes.

PeakID	Start	End	Strand	Peak score	Annotation	Distance to TSS	Gene name
Hoxc10-995087	64362709	64362717	+	10.32	Promoter-TSS (NM_021148)	-907	ZNF273
Hoxc10-1149745	136217478	136217486	+	10.32	Promoter-TSS (NR_000016)	171	SNORD36A
Hoxc10-547950	189158494	189158502	-	10.22	Intron (NR_045563, intron 1 of 12)	1108	GULP1
Hoxc10-147415	13983571	13983579	-	10.12	Promoter-TSS (NM_006108)	-609	SPON1
Hoxc10-1211085	130963123	130963131	+	10.12	Intron (NR_026975, intron 1 of 12)	1544	FIRRE
Hoxc10-738916	76434373	76434381	+	10.12	Intron (NM_001278537, intron 1 of 6)	129	RCHY1
Hoxc10-946462	139694313	139694321	+	10.12	Exon (NM_006079, exon 2 of 2)	1033	CITED2
Hoxc10-325292	74958285	74958293	-	10.02	Intron (NM_006432, intron 1 of 4)	1795	NPC2
Hoxc10-817817	36607874	36607882	-	10.02	Intron (NM_001289940, intron 1 of 7)	1421	SLC1A3
Hoxc10-238254	94074431	94074439	-	10.02	Intron (NM_001320100, intron 2 of 2)	1890	CRADD
Hoxc10-542492	179913905	179913913	+	9.65	Intron (NM_173648, intron 1 of 23)	877	CCDC141
Hoxc10-475848	27801238	27801246	+	9.55	Exon (NM_032266, exon 1 of 1)	1853	C2orf16
Hoxc10-943556	133134784	133134792	+	9.49	Promoter-TSS (NM_001016)	-920	RPS12
Hoxc10-406113	46667732	46667740	-	9.45	Promoter-TSS (NR_033202)	-46	HOXB-AS3
Hoxc10-6424	28906351	28906359	-	9.44	Promoter-TSS (NR_002987)	50	SNORA61
Hoxc10-403356	35848243	35848251	+	9.40	Intergenic	-1704	DUSP14
Hoxc10-280816	78111544	78111552	+	9.36	Intron (NM_003843, intron 1 of 31)	1739	SCEL
Hoxc10-983361	32532447	32532455	+	9.36	Intron (NM_001130710, intron 1 of 4)	-1976	LSM5
Hoxc10-131746	106029462	106029470	+	9.36	Intron (NM_001191013, intron 1 of 5)	835	GSTO2
Hoxc10-314211	48263561	48263569	+	9.30	Intron (NR_039996, intron 1 of 2)	652	LINC00648
Hoxc10-56754	173833431	173833439	+	9.30	Promoter-TSS (NR_003938)	-80	SNORD81
Hoxc10-933551	114290525	114290533	+	9.30	Promoter-TSS (NR_125845)	-336	LOC101927768
Hoxc10-263046	45914525	45914533	+	9.30	Promoter-TSS (NR_024458)	890	TPT1
Hoxc10-383836	61091233	61091241	+	9.26	Intergenic	-1567	MIR4426
Hoxc10-383835	61090812	61090820	+	9.26	Intergenic	-1146	MIR4426
Hoxc10-1000723	80550641	80550649	+	9.26	Intergenic	-1978	SEMA3C
Hoxc10-590663	60963985	60963993	+	9.26	TTS (NM_001024)	1868	RPS21
Hoxc10-669647	122918853	122918861	-	9.26	Intergenic	-1917	SEC22A
Hoxc10-6423	28904929	28904937	+	9.26	TTS (NR_024127)	401	SNORD99
Hoxc10-989689	48126200	48126208	-	9.26	Intergenic	-1996	UPP1
Hoxc10-938096	122929991	122929999	+	9.26	Intron (NM_001270393, intron 4 of 7)	-1382	PKIB
Hoxc10-552480	197038138	197038146	-	9.24	Intergenic	-1806	STK17B
Hoxc10-527635	149974612	149974620	-	9.24	Intergenic	-72	LYPD6B
Hoxc10-824228	52405254	52405262	+	9.24	Promoter-TSS (NM_001317002)	344	MOCS2
Hoxc10-263044	45913685	45913693	+	9.24	Promoter-TSS (NR_034107)	1730	TPT1
Hoxc10-1117770	34331273	34331281	-	9.24	Exon (NM_001286273, exon 3 of 5)	1773	NUDT2
Hoxc10-235374	88431138	88431146	-	9.24	Intron (NM_001244390, intron 1 of 2)	1874	C12orf29
Hoxc10-881436	176938361	176938369	+	9.02	Intron (NM_001009894, intron 1 of 6)	-938	DOK3
Hoxc10-873333	156570203	156570211	-	9.02	Promoter-TSS (NM_001308235)	-286	MED7

Table SIII. Continued.

PeakID	Start	End	Strand	Peak score	Annotation	Distance to TSS	Gene name
Hoxc10-720650	39032250	39032258	+	9.00	Intron (NM_024943, intron 1 of 6)	1787	TMEM156
Hoxc10-835152	76504926	76504934	-	9.00	Intergenic	-1776	PDE8B
Hoxc10-762563	120986858	120986866	-	9.00	Exon (NM_002358, exon 2 of 5)	1151	MAD2L1
Hoxc10-912915	74020930	74020938	+	9.00	Promoter-TSS (NM_001251874)	-846	KHDC1
Hoxc10-590662	60963553	60963561	+	8.92	TTS (NM_001024)	1436	RPS21
Hoxc10-48204	151346745	151346753	+	8.90	Intergenic	-1539	SELENBPI
Hoxc10-300064	20800564	20800572	-	8.90	Intron (NM_021178, intron 1 of 6)	903	CCNB1IP1
Hoxc10-89355	1100813	1100821	+	8.90	Intron (NM_001317955, intron 1 of 5)	1839	IDI1
Hoxc10-1025091	129934216	129934224	-	8.88	Intron (NM_001163446, intron 1 of 9)	1246	CPA4
Hoxc10-156019	31529434	31529442	-	8.83	Intron (NM_144981, intron 1 of 6)	1737	IMMP1L
Hoxc10-893801	28128372	28128380	+	8.73	Intergenic	-1163	ZNF192P1
Hoxc10-17018	62191890	62191898	-	8.72	Promoter-TSS (NM_032027)	-799	TM2D1
Hoxc10-406120	46688324	46688332	-	8.72	Promoter-TSS (NM_004502)	55	HOXB7
Hoxc10-616652	3222575	3222583	-	8.67	Intergenic	-1178	CRBN
Hoxc10-72137	207263107	207263115	-	8.63	Intron (NM_001017366, intron 2 of 6)	483	C4BPB
Hoxc10-720651	39032784	39032792	-	8.63	Intron (NM_024943, intron 1 of 6)	1253	TMEM156
Hoxc10-1000721	80549712	80549720	+	8.63	Intergenic	-1049	SEMA3C
Hoxc10-691630	170587901	170587909	+	8.63	Intron (NM_001099645, intron 1 of 3)	140	RPL22L1
Hoxc10-880109	172485094	172485102	+	8.56	Intron (NM_001168393, intron 1 of 3)	1743	CREBRF
Hoxc10-48851	153189402	153189410	+	8.55	Promoter-TSS (NM_001195571)	-654	PRR9
Hoxc10-835154	76508489	76508497	-	8.55	Intron (NM_001029853, intron 1 of 20)	1787	PDE8B
Hoxc10-1079736	98882211	98882219	+	8.55	Intron (NM_002380, intron 1 of 18)	966	MATN2
Hoxc10-621253	16305666	16305674	+	8.55	Promoter-TSS (NM_138381)	826	DPH3
Hoxc10-404645	40812902	40812910	+	8.55	Intron (NM_016437, intron 4 of 10)	1640	TUBG2
Hoxc10-945756	137988443	137988451	-	8.55	Intron (NR_125867, intron 1 of 3)	1664	LOC102723649
Hoxc10-920281	88033668	88033676	-	8.53	Intron (NM_198568, intron 1 of 2)	1366	SMIM8
Hoxc10-824227	52404716	52404724	+	8.53	Promoter-TSS (NR_034107)	882	MOCS2
Hoxc10-568532	233641947	233641955	-	8.53	Promoter-TSS (NM_001172417)	-676	KCNJ13
Hoxc10-314212	48263871	48263879	-	8.53	Intron (NR_039996, intron 1 of 2)	342	LINC00648
Hoxc10-547947	189155030	189155038	-	8.53	Intergenic	-1362	GULP1
Hoxc10-483966	47406046	47406054	-	8.53	Intergenic	-1975	CALM2
Hoxc10-462084	46650991	46650999	+	8.53	Promoter-TSS (NM_001135113)	-44	IGFL2
Hoxc10-215050	45272102	45272110	+	8.53	Intron (NM_001145110, intron 1 of 20)	-1473	NELL2
Hoxc10-738527	75721066	75721074	+	8.52	Intergenic	-1174	BTC
Hoxc10-179425	93754048	93754056	+	8.52	Promoter-TSS (NM_001098672)	-326	HEPPL1
Hoxc10-1079737	98883011	98883019	+	8.52	Intron (NM_002380, intron 1 of 18)	1766	MATN2
Hoxc10-578548	18549811	18549819	-	8.52	Intron (NR_015432, intron 1 of 1)	1742	LINC00493
Hoxc10-403357	35851785	35851793	+	8.48	Intron (NM_007026, intron 1 of 2)	1838	DUSP14
Hoxc10-127138	92681462	92681470	-	8.48	Promoter-TSS (NM_014391)	-434	ANKRD1

Table SIII. Continued.

PeakID	Start	End	Strand	Peak score	Annotation	Distance to TSS	Gene name
Hoxc10-1035079	155091213	155091221	-	8.47	Intron (NM_198337, intron 2 of 3)	1735	INSIG1
Hoxc10-568531	233640714	233640722	-	8.45	Intron (NM_002242, intron 1 of 2)	557	KCNJ13
Hoxc10-751504	100814685	100814693	+	8.45	Intron (NR_024170, intron 1 of 5)	1014	LAMTOR3
Hoxc10-938036	122794426	122794434	+	8.42	Intron (NM_001270393, intron 1 of 7)	1368	PKIB
Hoxc10-527600	149893872	149893880	-	8.37	Intergenic	-1105	LYPD6B
Hoxc10-314210	48262270	48262278	-	8.36	Intron (NR_039996, intron 1 of 2)	1943	LINC00648
Hoxc10-348328	48622396	48622404	-	8.36	Promoter-TSS (NM_001330286)	-892	DUT
Hoxc10-1058488	56686606	56686614	+	8.32	Promoter-TSS (NM_001286661)	-644	TMEM68
Hoxc10-406112	46667089	46667097	+	8.32	Promoter-TSS (NR_033202)	-689	HOXB-AS3
Hoxc10-217970	54377088	54377096	+	8.32	TTS (NR_047506)	-1854	HOXC10
Hoxc10-554734	201753658	201753666	-	8.30	Promoter-TSS (NM_021824)	187	PPIL3
Hoxc10-199473	10367438	10367446	-	8.30	Intron (NM_031412, intron 1 of 3)	1953	GABARAPL1
Hoxc10-869595	146941084	146941092	-	8.27	Intron (NR_038902, intron 1 of 3)	1531	JAKMIP2-AS1
Hoxc10-264909	50072349	50072357	+	8.27	Intron (NM_001040444, intron 1 of 9)	1161	PHF11
Hoxc10-264908	50072321	50072329	+	8.27	Intron (NM_001040444, intron 1 of 9)	1133	PHF11
Hoxc10-612089	37640586	37640594	-	8.27	Promoter-TSS (NM_002872)	-251	RAC2
Hoxc10-1211087	130965832	130965840	+	8.26	Intergenic	-1165	FIRRE
Hoxc10-912914	74020557	74020565	+	8.26	Promoter-TSS (NM_001251874)	-473	KHDC1
Hoxc10-120111	75912806	75912814	-	8.26	Intron (NM_006721, intron 1 of 10)	1867	ADK
Hoxc10-738917	76435944	76435952	+	8.26	Intron (NM_001278538, intron 1 of 8)	-1442	RCHY1
Hoxc10-1133874	91924179	91924187	-	8.22	Intergenic	-1927	CKS2
Hoxc10-892908	25961535	25961543	-	8.22	Intergenic	-1378	TRIM38
Hoxc10-348327	48622152	48622160	+	8.22	Intergenic	-1136	DUT
Hoxc10-1024669	128430036	128430044	+	8.22	Intergenic	-1424	CCDC136
Hoxc10-48944	153590488	153590496	-	8.22	TTS (NM_005979)	-1684	S100A14
Hoxc10-1102869	5438164	5438172	+	8.22	Promoter-TSS (NM_018465)	-231	PLGRKT
Hoxc10-404137	38977964	38977972	+	8.17	Intron (NM_000421, intron 1 of 7)	895	KRT10
Hoxc10-1145150	120468236	120468244	+	8.17	Intron (NM_138557, intron 1 of 1)	1787	TLR4
Hoxc10-6414	28834901	28834909	+	8.17	Promoter-TSS (NR_004404)	-165	SNORA73B
Hoxc10-640669	64209851	64209859	-	8.16	Intron (NM_198859, intron 1 of 7)	1276	PRICKLE2
Hoxc10-280814	78110813	78110821	-	8.16	Intron (NM_003843, intron 1 of 31)	1008	SCEL
Hoxc10-423461	14133445	14133453	-	8.16	Promoter-TSS (NR_033354)	-960	ZNF519
Hoxc10-738915	76434304	76434312	-	8.16	Intron (NM_001278537, intron 1 of 6)	198	RCHY1
Hoxc10-986517	39605075	39605083	-	8.16	Promoter-TSS (NM_020192)	-896	YAE1D1
Hoxc10-690025	167452071	167452079	+	8.16	5'UTR (NM_007217, exon 2 of 9)	519	PDCD10
Hoxc10-1051524	37350288	37350296	+	8.16	Intron (NR_121620, intron 1 of 6)	1139	LINC01605
Hoxc10-1158264	15873262	15873270	-	8.16	Promoter-TSS (NM_003916)	-129	APIS2
Hoxc10-552512	197125684	197125692	-	8.14	Intron (NR_110226, intron 2 of 2)	940	LOC101927482
Hoxc10-527619	149935167	149935175	-	8.12	Intron (NM_001317004, intron 1 of 6)	1135	LYPD6B

Table SIII. Continued.

PeakID	Start	End	Strand	Peak score	Annotation	Distance to TSS	Gene name
Hoxc10-586731	48733209	48733217	+	8.12	Promoter-TSS (NM_001282575)	-717	UBE2V1
Hoxc10-988779	45808437	45808445	+	8.05	Non-coding (NR_024271, exon 1 of 13)	176	SEPT7P2
Hoxc10-383834	61087890	61087898	+	8.00	Intergenic	1776	MIR4426
Hoxc10-1061974	63953375	63953383	+	8.00	Intergenic	-1769	GGH
Hoxc10-238253	94069792	94069800	+	8.00	Intergenic	-1351	CRADD
Hoxc10-461293	43421384	43421392	-	8.00	Intron (NM_001031850, intron 1 of 5)	688	PSG6
Hoxc10-315233	50085862	50085870	+	8.00	Intron (NM_001001, intron 1 of 1)	1537	RPL36AL
Hoxc10-1061971	63950636	63950644	-	8.00	Intron (NM_003878, intron 1 of 8)	970	GGH
Hoxc10-1000720	80549486	80549494	+	7.99	Promoter-TSS (NM_006379)	-823	SEMA3C
Hoxc10-475846	27798164	27798172	+	7.90	Intergenic	-1221	C2orf16
Hoxc10-24271	76541179	76541187	+	7.90	Intron (NM_152996, intron 1 of 4)	794	ST6GALNAC3
Hoxc10-1000722	80549930	80549938	-	7.90	Intergenic	-1267	SEMA3C
Hoxc10-475847	27800858	27800866	-	7.90	Exon (NM_032266, exon 1 of 1)	1473	C2orf16
Hoxc10-1063699	67524231	67524239	-	7.90	Intron (NM_001294282, intron 1 of 14)	1249	MYBL1
Hoxc10-14129	55087645	55087653	+	7.90	Intron (NM_176782, intron 1 of 7)	1551	FAM151A
Hoxc10-983359	32530492	32530500	-	7.90	Promoter-TSS (NM_012322)	-21	LSM5
Hoxc10-120123	75937582	75937590	-	7.90	Intron (NM_001123, intron 1 of 10)	1339	ADK
Hoxc10-1079738	98883041	98883049	-	7.88	Intron (NM_002380, intron 1 of 18)	1796	MATN2
Hoxc10-400446	26660996	26661004	+	7.82	Intron (NM_00126774, intron 1 of 5)	1515	IFT20
Hoxc10-1020688	120499699	120499707	+	7.80	Intergenic	-1526	TSPAN12
Hoxc10-289051	91998657	91998665	+	7.80	Intergenic	-1413	MIR17HG
Hoxc10-797320	185545439	185545447	-	7.80	Intron (NR_131965, intron 1 of 2)	583	LVCAT8
Hoxc10-280817	78111702	78111710	-	7.80	Intron (NM_003843, intron 1 of 31)	1897	SCEL
Hoxc10-280813	78110471	78110479	-	7.80	Intron (NM_003843, intron 1 of 31)	666	SCEL
Hoxc10-300065	20803285	20803293	+	7.80	Intergenic	-1818	CCNB1IP1
Hoxc10-780954	155533466	155533474	-	7.80	Intron (NM_021870, intron 2 of 8)	432	FGG
Hoxc10-395432	8288257	8288265	-	7.80	Intergenic	-1696	RPL26
Hoxc10-983357	32528157	32528165	+	7.80	Intron (NM_001139499, intron 3 of 4)	1862	LSM5
Hoxc10-198183	6864421	6864429	-	7.80	Intergenic	-1789	MLF2
Hoxc10-1018436	116501585	116501593	-	7.80	Promoter-TSS (NM_006136)	-974	CAPZA2
Hoxc10-989690	48128551	48128559	-	7.80	Promoter-TSS (NM_003364)	-182	UPPI
Hoxc10-970514	6313176	6313184	-	7.78	Promoter-TSS (NM_004227)	-938	CYTH3
Hoxc10-23614	75199755	75199763	+	7.78	Promoter-TSS (NM_001130042)	-667	CRYZ
Hoxc10-1100683	840995	841003	+	7.76	Promoter-TSS (NM_021951)	-691	DMRT1
Hoxc10-213641	42634033	42634041	+	7.76	Intergenic	-1867	YAF2
Hoxc10-301402	24674260	24674268	+	7.75	Promoter-TSS (NM_001308067)	-593	TSSK4
Hoxc10-1077701	93976979	93976987	-	7.75	Intron (NM_001171797, intron 1 of 4)	834	TRIQK
Hoxc10-265124	50657399	50657407	-	7.73	Intron (NR_109974, intron 2 of 6)	1098	DLEU1
Hoxc10-1012205	104631812	104631820	+	7.70	Promoter-TSS (NR_039981)	-204	LINC01004

Table SIII. Continued.

PeakID	Start	End	Strand	Peak score	Annotation	Distance to TSS	Gene name
Hoxc10-1030763	144534793	144534801	+	7.70	Intergenic	-1651	TPK1
Hoxc10-156020	31529892	31529900	-	7.70	Intron (NM_144981, intron 1 of 6)	1279	IMMP1L
Hoxc10-554733	201752820	201752828	+	7.70	Intron (NM_032472, intron 1 of 6)	1025	PPIL3
Hoxc10-933549	114289606	114289614	+	7.70	Intron (NR_033441, intron 1 of 14)	-1255	LOC101927768
Hoxc10-423460	14132916	14132924	+	7.70	Promoter-TSS (NR_033354)	-431	ZNF519
Hoxc10-404786	41475674	41475682	-	7.70	Promoter-TSS (NM_001661)	-675	ARL4D
Hoxc10-720658	39045472	39045480	-	7.70	Promoter-TSS (NM_001171654)	-975	KLHL5
Hoxc10-588044	52823435	52823443	-	7.70	Intergenic	-1063	PFND4
Hoxc10-547949	189157775	189157783	-	7.69	Non-coding (NR_045563, exon 1 of 13)	389	GULP1
Hoxc10-819816	40834805	40834813	+	7.66	Intron (NM_000997, intron 1 of 3)	578	RPL37
Hoxc10-48205	151346763	151346771	+	7.63	Intergenic	-1557	SELENBP1
Hoxc10-452204	1477521	1477529	+	7.62	Intron (NM_152482, intron 2 of 2)	1703	C19orf25
Hoxc10-946461	139693873	139693881	+	7.62	3'UTR (NM_006079, exon 2 of 2)	1473	CITED2
Hoxc10-17017	62191490	62191498	-	7.59	Promoter-TSS (NM_032027)	-399	TM2D1
Hoxc10-300063	20799761	20799769	+	7.59	Intron (NM_021178, intron 1 of 6)	1706	CCNB1IP1
Hoxc10-1158263	15871146	15871154	-	7.59	Intron (NM_001272071, intron 1 of 5)	1987	API2
Hoxc10-1197	6525992	6526000	-	7.59	TTS (NM_001265592)	259	TNFRSF25
Hoxc10-395431	8287019	8287027	-	7.59	Promoter-TSS (NM_000987)	-458	RPL26
Hoxc10-552479	197037176	197037184	-	7.57	Promoter-TSS (NM_004226)	-844	STK17B
Hoxc10-23613	75199672	75199680	-	7.56	Promoter-TSS (NM_001130042)	-584	CRYZ
Hoxc10-487932	55457452	55457460	+	7.56	Intron (NM_152385, intron 1 of 12)	-1583	RPS27A
Hoxc10-404140	38979566	38979574	+	7.56	Promoter-TSS (NM_000421)	-707	KRT10
Hoxc10-179424	93754015	93754023	-	7.56	Promoter-TSS (NM_001098672)	-359	HEPPL1
Hoxc10-945755	137988332	137988340	-	7.56	Intron (NR_125867, intron 1 of 3)	1553	LOC102723649
Hoxc10-542494	179916245	179916253	-	7.55	Intergenic	-1463	CCDC141
Hoxc10-294339	103427273	103427281	+	7.55	Intergenic	-1106	TEX30
Hoxc10-638184	58485694	58485702	-	7.55	Intron (NM_153331, intron 1 of 1)	1606	KCTD6
Hoxc10-398325	16121478	16121486	-	7.55	Intron (NM_004278, intron 1 of 6)	973	PIGL
Hoxc10-306637	34930605	34930613	+	7.53	Intron (NM_138288, intron 1 of 1)	859	SPTSSA
Hoxc10-893802	28131105	28131113	-	7.53	Intron (NR_103448, intron 2 of 4)	1570	ZNF192P1
Hoxc10-608033	22654110	22654118	-	7.53	Intron (NR_027293, intron 1 of 10)	1651	BMS1P20
Hoxc10-404139	38979526	38979534	-	7.53	Promoter-TSS (NM_000421)	-667	KRT10
Hoxc10-215049	45268369	45268377	-	7.53	Intron (NM_001145110, intron 3 of 20)	1071	NELL2
Hoxc10-1015491	111201033	111201041	-	7.52	Intron (NM_001244606, intron 2 of 6)	1310	IMMP2L
Hoxc10-983358	32528180	32528188	+	7.52	Intron (NM_001139499, intron 3 of 4)	1839	LSM5
Hoxc10-264907	50071915	50071923	-	7.50	Intron (NM_001040444, intron 1 of 9)	727	PHF11
Hoxc10-248157	122239739	122239747	+	7.50	Intron (NR_002809, intron 2 of 6)	1647	LINC01089
Hoxc10-919482	86390176	86390184	+	7.49	Intergenic	-1729	SNHG5
Hoxc10-464540	57876505	57876513	-	7.49	Non-coding (NR_002166, exon 2 of 2)	1630	TRAPPC2B

Table SIII. Continued.

PeakID	Start	End	Strand	Peak score	Annotation	Distance to TSS	Gene name
Hoxc10-1156960	12994793	12994801	-	7.49	Intron (NM_021109, intron 2 of 2)	1571	TMSB4X
Hoxc10-869594	146939752	146939760	+	7.49	Intron (NR_038902, intron 1 of 3)	199	JAKMIP2-AS1
Hoxc10-817814	36605597	36605605	-	7.46	Promoter-TSS (NM_004172)	-856	SLC1A3
Hoxc10-556814	206546170	206546178	-	7.46	Intergenic	-1050	NRP2
Hoxc10-1102870	5439644	5439652	-	7.45	Intergenic	-1711	PLGRKT
Hoxc10-1156959	12992024	12992032	+	7.45	Intergenic	-1198	TMSB4X
Hoxc10-94014	12389656	12389664	-	7.45	Intergenic	-1882	CAMK1D
Hoxc10-552478	197034361	197034369	+	7.45	Intron (NM_004226, intron 1 of 7)	1971	STK17B
Hoxc10-920280	88033330	88033338	-	7.45	Intron (NM_198568, intron 1 of 2)	1028	SMIM8
Hoxc10-1018437	116501939	116501947	-	7.45	Promoter-TSS (NM_006136)	-620	CAPZA2
Hoxc10-139491	124737621	124737629	+	7.45	Intergenic	-1931	PSTK
Hoxc10-588045	52823799	52823807	+	7.45	Promoter-TSS (NM_002623)	-699	PFDN4
Hoxc10-873332	156568535	156568543	-	7.45	Intron (NM_004270, intron 1 of 1)	1247	MED7
Hoxc10-394408	3702996	3703004	+	7.45	Intron (NM_002208, intron 1 of 30)	1537	ITGAE
Hoxc10-198181	6860685	6860693	+	7.45	Intron (NM_005439, intron 4 of 8)	1393	MLF2
Hoxc10-1212305	133940925	133940933	+	7.44	Promoter-TSS (NM_001170782)	-276	FAM122C
Hoxc10-542493	179914567	179914575	-	7.44	Exon (NM_001316745, exon 1 of 12)	215	CCDC141
Hoxc10-1172639	46695015	46695023	-	7.44	Intergenic	-1328	RP2
Hoxc10-720673	39065684	39065692	-	7.43	Intron (NM_199039, intron 1 of 9)	1836	KLHL5
Hoxc10-1024668	128429509	128429517	+	7.43	Intergenic	-1951	CCDC136
Hoxc10-1058485	56676596	56676604	+	7.43	Promoter-TSS (NM_001286657)	-61	TMEM68
Hoxc10-198182	6861873	6861881	-	7.42	Intron (NR_026581, intron 1 of 8)	205	MLF2
Hoxc10-131745	106029152	106029160	-	7.40	Promoter-TSS (NR_039702)	525	GSTO2
Hoxc10-241944	102513559	102513567	+	7.39	Promoter-TSS (NM_001319996)	346	NUP37
Hoxc10-404485	39779697	39779705	+	7.39	Intron (NM_000422, intron 1 of 7)	1181	KRT17
Hoxc10-264906	50070868	50070876	-	7.39	Promoter-TSS (NM_001040444)	-320	PHF11
Hoxc10-7415	33115592	33115600	+	7.38	Intron (NM_001330475, intron 1 of 6)	595	ZBTB80S
Hoxc10-933550	114289978	114289986	+	7.38	Promoter-TSS (NR_125845)	-883	LOC101927768
Hoxc10-1135137	95736687	95736695	+	7.38	Promoter-TSS (NM_033086)	-27	FGD3
Hoxc10-892909	25962208	25962216	+	7.38	Promoter-TSS (NM_006355)	-705	TRIM38
Hoxc10-586730	48727970	48727978	-	7.38	Non-coding (NR_104218, exon 2 of 4)	1761	UBE2V1
Hoxc10-969339	1199023	1199031	-	7.35	Promoter-TSS (NR_110069)	828	ZFAND2A
Hoxc10-127137	92680528	92680536	+	7.33	Intron (NM_014391, intron 1 of 8)	500	ANKRD1
Hoxc10-817813	36604666	36604674	-	7.33	Intergenic	-1787	SLC1A3
Hoxc10-23615	75200859	75200867	-	7.33	Intron (NR_027962, intron 1 of 5)	-1771	CRYZ
Hoxc10-323920	70826574	70826582	-	7.32	Promoter-TSS (NM_001204090)	-130	COX16
Hoxc10-720672	39064284	39064292	+	7.30	Exon (NM_199039, exon 1 of 10)	436	KLHL5
Hoxc10-797321	185546921	185546929	+	7.27	Promoter-TSS (NR_131967)	-899	LVCAT8
Hoxc10-892910	25963518	25963526	+	7.27	Intron (NM_006355, intron 2 of 7)	605	TRIM38

Table SIII. Continued.

PeakID	Start	End	Strand	Peak score	Annotation	Distance to TSS	Gene name
Hoxc10-817816	36607543	36607551	+	7.27	Intron (NM_001289940, intron 1 of 7)	1090	SLC1A3
Hoxc10-245	935121	935129	+	7.27	Exon (NM_021170, exon 2 of 4)	427	HES4
Hoxc10-938035	122793789	122793797	+	7.27	Promoter-TSS (NM_020755)	731	PKIB
Hoxc10-120122	75935823	75935831	+	7.27	Promoter-TSS (NM_001202449)	-420	ADK
Hoxc10-280815	78111026	78111034	-	7.27	Intron (NM_003843, intron 1 of 31)	1221	SCEL
Hoxc10-215048	45268348	45268356	+	7.27	Intron (NM_001145110, intron 3 of 20)	1092	NELL2
Hoxc10-487934	55462526	55462534	+	7.27	TTS (NR_039624)	1230	MIR4426
Hoxc10-256881	32604099	32604107	+	7.25	Intron (NR_103839, intron 1 of 3)	-1334	FRY
Hoxc10-1018435	116500941	116500949	+	7.24	Intergenic	-1618	CAPZA2
Hoxc10-487933	55457630	55457638	-	7.24	Intron (NM_152385, intron 1 of 12)	-1405	RPS27A
Hoxc10-215074	45305967	45305975	-	7.24	Intron (NM_001145110, intron 1 of 20)	1740	NELL2
Hoxc10-780953	155532378	155532386	-	7.24	Intron (NM_021870, intron 4 of 8)	1520	FGG
Hoxc10-709392	18024749	18024757	+	7.24	Intergenic	-1255	LCORL
Hoxc10-1030762	144531605	144531613	+	7.24	Intron (NM_001042482, intron 2 of 7)	1537	TPK1
Hoxc10-1025090	129934147	129934155	-	7.23	Intron (NM_001163446, intron 1 of 9)	1177	CPA4
Hoxc10-938118	122972199	122972207	-	7.23	Intron (NM_032471, intron 2 of 3)	-1671	PKIB
Hoxc10-1061975	63953584	63953592	+	7.23	Intergenic	-1978	GGH
Hoxc10-3905	17529954	17529962	-	7.23	Intergenic	-1663	PADI1
Hoxc10-289052	91999065	91999073	+	7.22	Intergenic	-1005	MIR17HG
Hoxc10-988780	45810424	45810432	-	7.20	Intergenic	-1811	SEPT7P2
Hoxc10-1058587	56987353	56987361	+	7.20	Intergenic	-217	RPS20
Hoxc10-131564	105507904	105507912	-	7.18	Promoter-TSS (NM_001023)	1371	SH3PXD2A-AS1
Hoxc10-72135	207260620	207260628	+	7.17	Intron (NR_038940, intron 1 of 2)	-1563	C4BPB
Hoxc10-72136	207260626	207260634	-	7.17	Intergenic	-1557	C4BPB
Hoxc10-1141843	111774092	111774100	-	7.17	Intron (NM_003798, intron 1 of 18)	1778	CTNNA1
Hoxc10-383837	61091614	61091622	+	7.17	Intergenic	-1948	MIR4426
Hoxc10-1046608	25284311	25284319	-	7.17	Intergenic	-1759	GNRH1
Hoxc10-179304	93468549	93468557	+	7.17	Promoter-TSS (NR_002973)	-151	SNORA40
Hoxc10-199472	10366553	10366561	+	7.17	Intron (NM_031412, intron 1 of 3)	1068	GABARAPL1
Hoxc10-886573	10724769	10724777	-	7.17	Intron (NM_016462, intron 1 of 5)	1625	TMEM14C
Hoxc10-824226	52404343	52404351	-	7.17	Intron (NM_176806, intron 2 of 6)	1255	MOCS2
Hoxc10-1135136	95734868	95734876	-	7.17	Intron (NM_001286993, intron 1 of 17)	-1846	FGD3
Hoxc10-262124	43598242	43598250	+	7.17	Intron (NM_013238, intron 1 of 5)	884	DNAJC15
Hoxc10-131747	106030319	106030327	+	7.17	Intron (NM_001191013, intron 1 of 5)	1692	GSTO2
Hoxc10-239070	96183842	96183850	+	7.17	5'UTR (NM_001329702, exon 1 of 10)	127	NTN4
Hoxc10-131292	104472628	104472636	+	7.17	Intron (NM_004311, intron 1 of 5)	1558	ARL3
Hoxc10-404644	40810403	40810411	+	7.17	Promoter-TSS (NM_001320509)	-859	TUBG2
Hoxc10-462085	46652975	46652983	-	7.17	Intron (NM_001002915, intron 2 of 4)	1479	IGFL2
Hoxc10-836626	79947541	79947549	-	7.17	Promoter-TSS (NM_001190470)	-691	MTRNR2L2

Table SIII. Continued.

PeakID	Start	End	Strand	Peak score	Annotation	Distance to TSS	Gene name
Hoxc10-406077	46509169	46509177	-	7.17	Intergenic	-1579	SKAP1
Hoxc10-547948	189157062	189157070	+	7.17	Promoter-TSS (NR_045563)	-324	GULP1
Hoxc10-938097	122933367	122933375	-	7.17	Intron (NM_181795, intron 1 of 4)	1994	PKIB
Hoxc10-4483	20250177	20250185	+	7.16	Promoter-TSS (NM_014589)	-71	PLA2G2E
Hoxc10-590664	60964042	60964050	-	7.16	TTS (NM_001024)	1925	RPS21
Hoxc10-289053	91999186	91999194	-	7.14	Promoter-TSS (NR_027349)	-884	MIR17HG
Hoxc10-483964	47403677	47403685	+	7.14	Promoter-TSS (NM_001305624)	81	CALM2
Hoxc10-409856	56771690	56771698	+	7.13	Intron (NR_103872, intron 1 of 7)	1760	RAD51C
Hoxc10-1143882	117351625	117351633	+	7.13	Intron (NM_004888, intron 1 of 2)	1635	ATP6V1G1
Hoxc10-24126	76250139	76250147	-	7.13	Intergenic	-1736	RABGGTB
Hoxc10-835153	76508372	76508380	+	7.13	Intron (NM_001029853, intron 1 of 20)	1670	PDE8B
Hoxc10-983360	32531086	32531094	+	7.12	Promoter-TSS (NR_024466)	-615	LSM5
Hoxc10-608032	22653501	22653509	+	7.12	Intron (NR_027293, intron 1 of 10)	1042	BMS1P20
Hoxc10-199460	10323547	10323555	+	7.12	Intron (NM_001079815, intron 1 of 5)	353	TMEM52B
Hoxc10-638183	58483613	58483621	-	7.12	Promoter-TSS (NM_153331)	-475	KCTD6
Hoxc10-1133875	91925606	91925614	-	7.12	Promoter-TSS (NM_001827)	-500	CKS2
Hoxc10-800427	996017	996025	-	7.12	Intron (NR_104614, intron 1 of 1)	1434	LOC100506688
Hoxc10-6415	28834918	28834926	+	7.12	Promoter-TSS (NR_004404)	-148	SNORA73B
Hoxc10-938119	122975397	122975405	+	7.12	Intron (NM_001270395, intron 1 of 4)	1527	PKIB
Hoxc10-1061973	63953109	63953117	+	7.10	Intergenic	-1503	GGH
Hoxc10-461335	43528895	43528903	-	7.08	Exon (NM_002785, exon 2 of 6)	1732	PSG11
Hoxc10-461399	43688986	43688994	-	7.08	Exon (NM_002781, exon 2 of 6)	1698	PSG5
Hoxc10-120121	75935587	75935595	+	7.08	Promoter-TSS (NM_001202449)	-656	ADK
Hoxc10-461292	43420329	43420337	-	7.08	Exon (NM_002782, exon 2 of 6)	1743	PSG6
Hoxc10-461301	43439608	43439616	-	7.08	Exon (NM_002783, exon 2 of 6)	1718	PSG7
Hoxc10-461408	43708090	43708098	-	7.08	Exon (NM_213633, exon 2 of 5)	1832	PSG4
Hoxc10-461357	43585085	43585093	-	7.08	Exon (NM_031246, exon 2 of 6)	1804	PSG2
Hoxc10-1118804	37591055	37591063	+	7.08	Intron (NM_001001790, intron 1 of 1)	1577	TOMM5
Hoxc10-120119	75934674	75934682	-	7.07	Intron (NM_006721, intron 1 of 10)	-1569	ADK
Hoxc10-705222	6694659	6694667	+	7.07	Promoter-TSS (NM_005980)	-903	S100P
Hoxc10-404138	38979408	38979416	+	7.07	Promoter-TSS (NM_000421)	-549	KRT10
Hoxc10-199461	10323980	10323988	-	7.07	Intron (NM_001079815, intron 1 of 5)	786	TMEM52B
Hoxc10-463066	52299084	52299092	+	7.07	Intron (NM_002030, intron 1 of 1)	689	FPR3
Hoxc10-817815	36606387	36606395	+	7.07	Promoter-TSS (NM_004172)	-66	SLC1A3
Hoxc10-556815	206546460	206546468	-	7.07	Promoter-TSS (NM_003872)	-760	NRP2
Hoxc10-1030764	144534860	144534868	-	7.07	Intergenic	-1718	TPK1
Hoxc10-263045	45914005	45914013	+	7.07	Intron (NM_003295, intron 3 of 5)	1410	TPST1
Hoxc10-580545	23732389	23732397	-	7.07	Promoter-TSS (NM_001898)	-819	CST1
Hoxc10-580521	23670491	23670499	-	7.07	Promoter-TSS (NM_001899)	-833	CST4

Table SIII. Continued.

PeakID	Start	End	Strand	Peak score	Annotation	Distance to TSS	Gene name
Hoxc10-483965	47405029	47405037	+	7.07	Promoter-TSS (NM_001305625)	-958	CALM2
Hoxc10-1061972	63952820	63952828	+	7.07	Intergenic	-1214	GGH
Hoxc10-120120	75935209	75935217	+	7.07	Intron (NM_006721, intron 1 of 10)	-1034	ADK
Hoxc10-824225	52404070	52404078	+	7.07	Intron (NM_176806, intron 2 of 6)	1528	MOC52
Hoxc10-605742	45077548	45077556	+	7.07	Intron (NM_007031, intron 2 of 8)	1822	HSF2BP
Hoxc10-1061970	63950158	63950166	-	7.06	Intron (NM_003878, intron 1 of 8)	1448	GGH
Hoxc10-988341	44059792	44059800	+	7.06	Intergenic	-1003	POLR2J4
Hoxc10-542491	179913356	179913364	+	7.06	Intron (NM_173648, intron 1 of 23)	1426	CCDC141
Hoxc10-1211086	130963335	130963343	+	7.04	Intron (NR_026975, intron 1 of 12)	1332	FIRRE
Hoxc10-462086	46653483	46653491	-	7.04	Intron (NM_001002915, intron 2 of 4)	1987	IGFL2
Hoxc10-415594	72198751	72198759	+	7.04	Intergenic	-1040	RPL38
Hoxc10-865888	137202166	137202174	+	7.04	Intergenic	-1375	MYOT
Hoxc10-213640	42633059	42633067	+	7.04	Promoter-TSS (NM_001320080)	-893	YAF2
Hoxc10-23612	75199435	75199443	-	7.04	Promoter-TSS (NM_001130042)	-347	CRYZ
Hoxc10-690024	167451300	167451308	-	7.04	Intron (NM_145859, intron 1 of 8)	1290	PDCD10
Hoxc10-398389	16341159	16341167	+	7.04	TTS (NM_016113)	-1138	LRRC75A-AS1
Hoxc10-1103364	6644121	6644129	+	7.04	Intron (NM_000170, intron 2 of 24)	1567	GLDC
Hoxc10-215073	45305755	45305763	+	7.04	Intron (NM_001145110, intron 1 of 20)	1952	NELL2
Hoxc10-265513	51482355	51482363	-	7.04	Intron (NR_046552, intron 1 of 2)	-1455	RNASEH2B
Hoxc10-262123	43596919	43596927	+	7.04	Promoter-TSS (NM_013238)	-439	DNAJC15
Hoxc10-317334	55035308	55035316	-	7.04	Intron (NM_015589, intron 1 of 11)	982	SAMD4A
Hoxc10-179423	93752873	93752881	-	7.04	Intergenic	-1501	HEPPL1
Hoxc10-1143517	115912435	115912443	-	7.04	Promoter-TSS (NM_001860)	-799	SLC31A2
Hoxc10-412167	63098779	63098787	-	7.04	Intron (NR_110801, intron 2 of 2)	1853	LOC100507002
Hoxc10-988340	44059727	44059735	+	7.04	Promoter-TSS (NR_003655)	-938	POLR2J4
Hoxc10-131563	105504881	105504889	+	7.02	Intron (NM_014631, intron 3 of 13)	-1652	SH3PXD2A-AS1