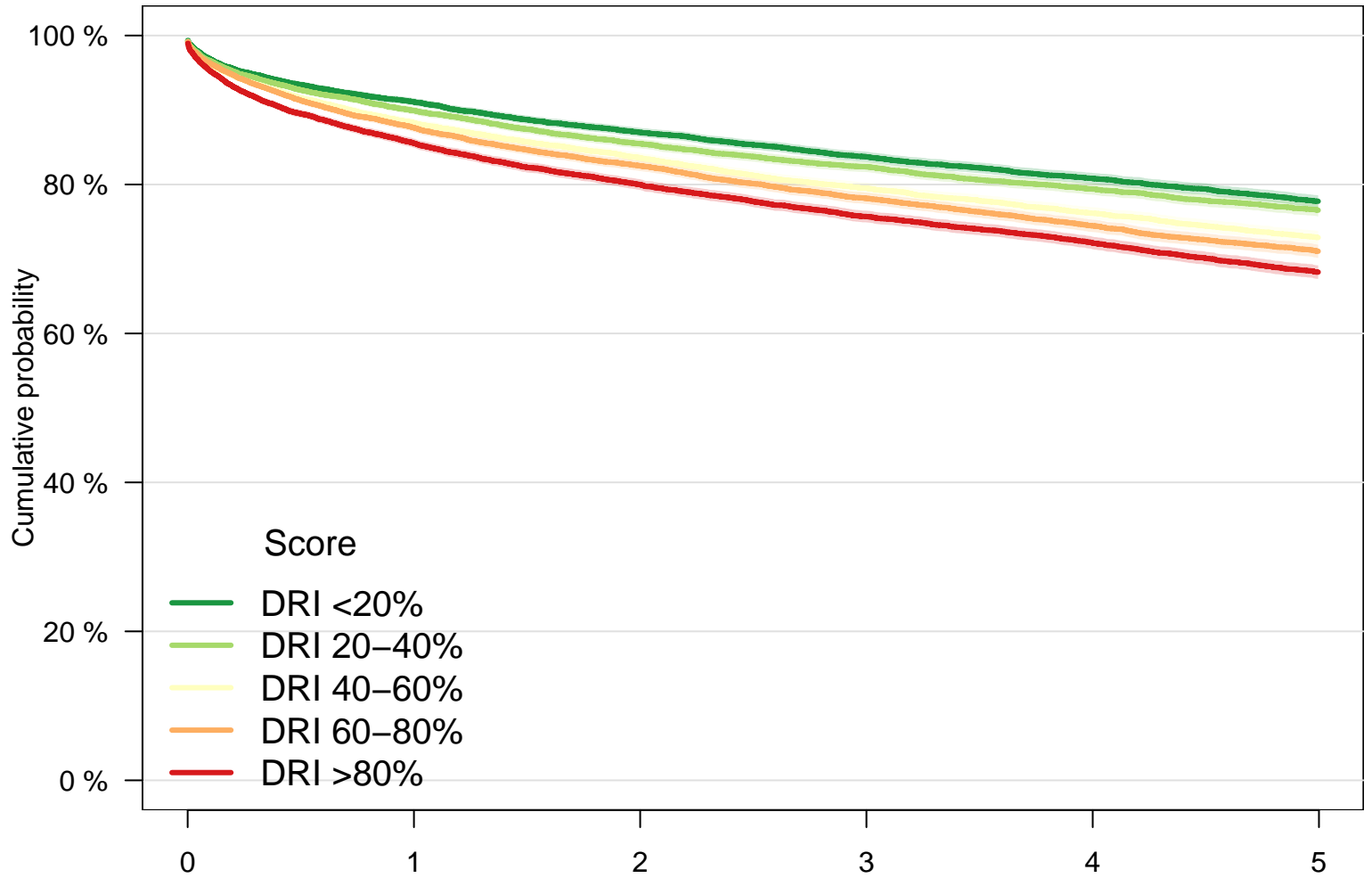


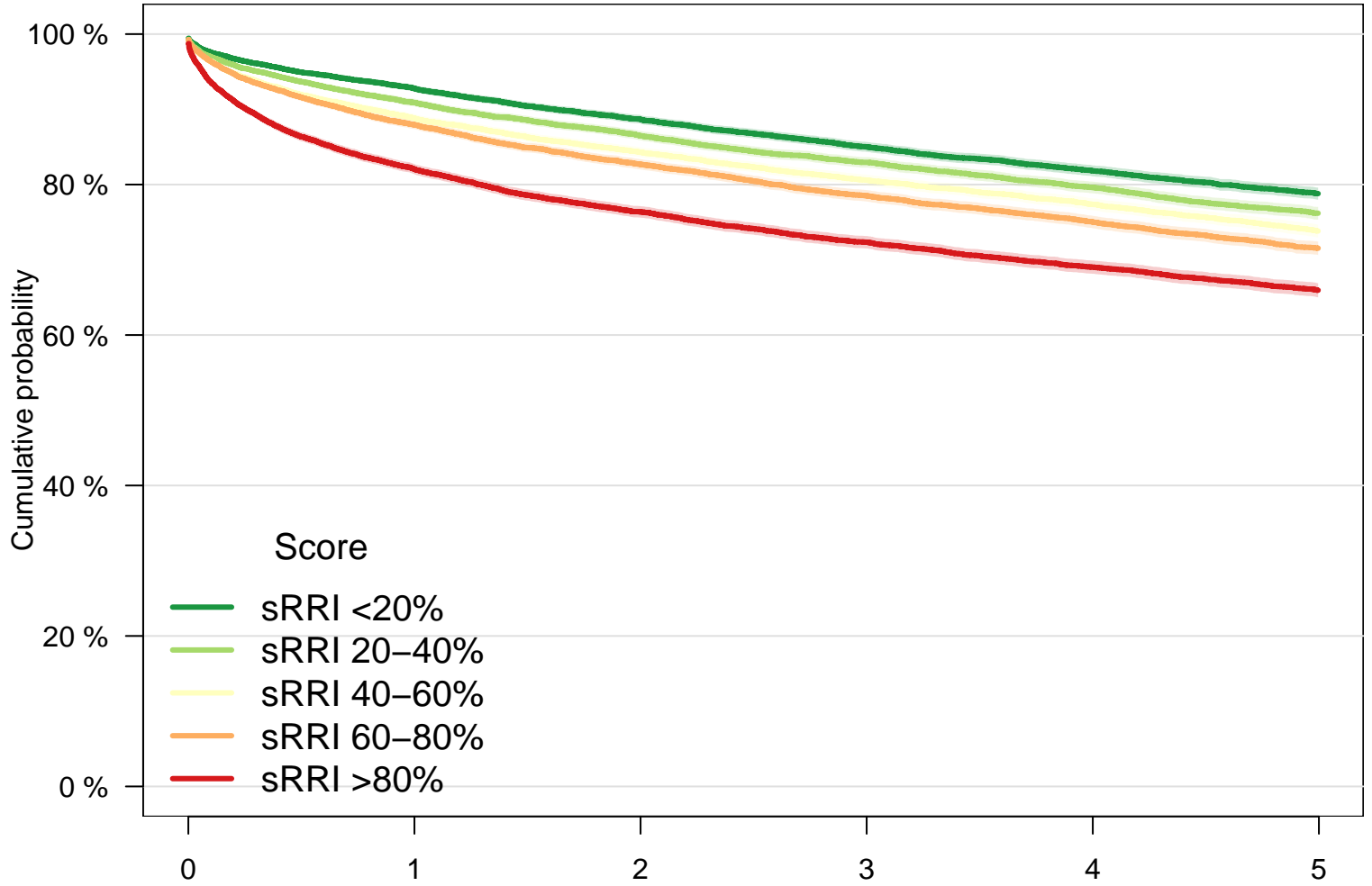
Fig S1A. Patient survival, DRI



Survival period (years)

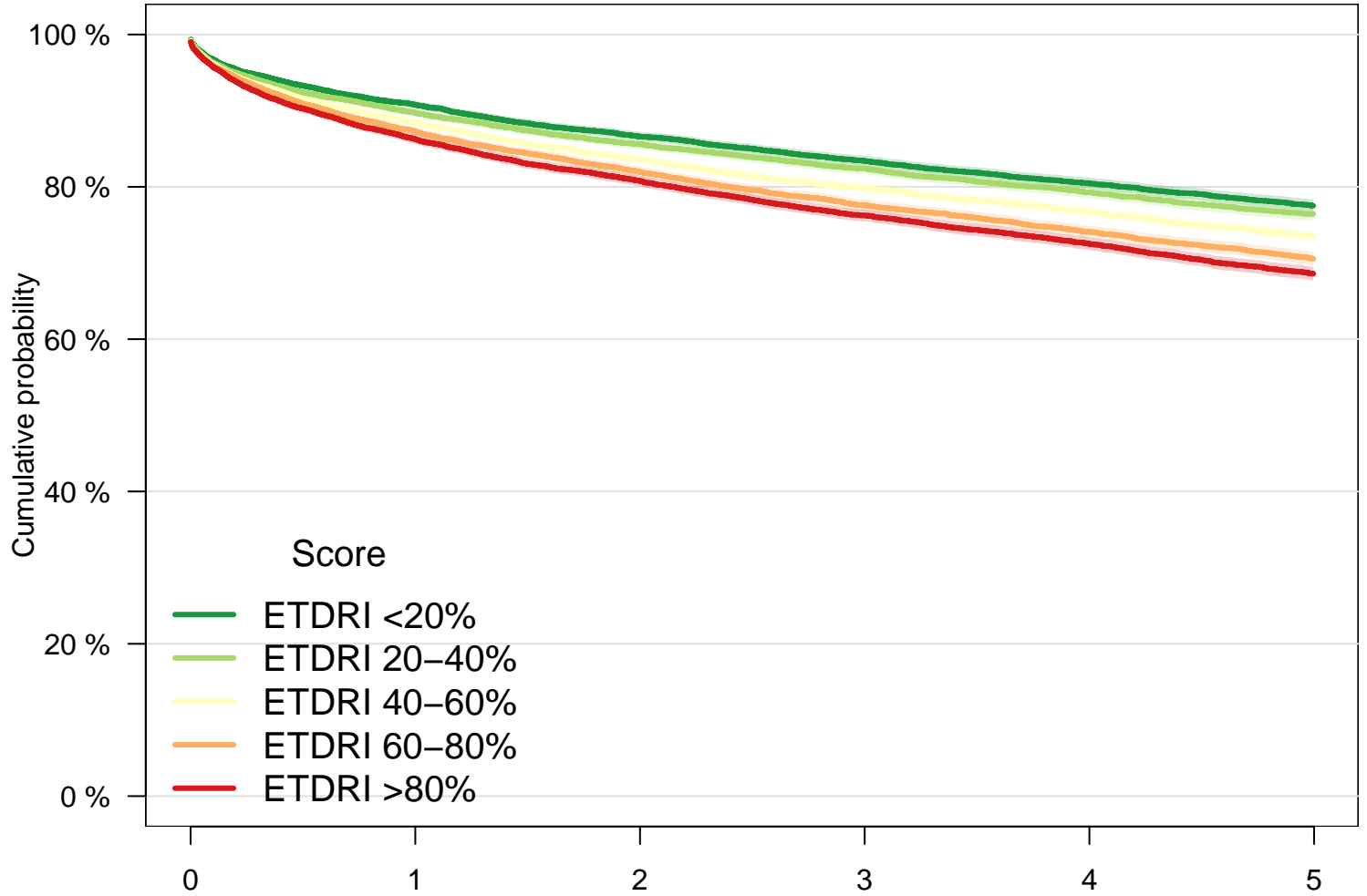
Score	0	1	2	3	4	5
DRI <20%:	12456	10759	9153	7788	6541	5432
DRI 20–40%:	12463	10497	8711	7343	6132	5085
DRI 40–60%:	12470	10392	8606	7131	5895	4839
DRI 60–80%:	12447	10320	8501	7019	5788	4801
DRI >80%:	12458	10157	8403	6991	5875	4841

Fig S1B. Patient survival, sRRI



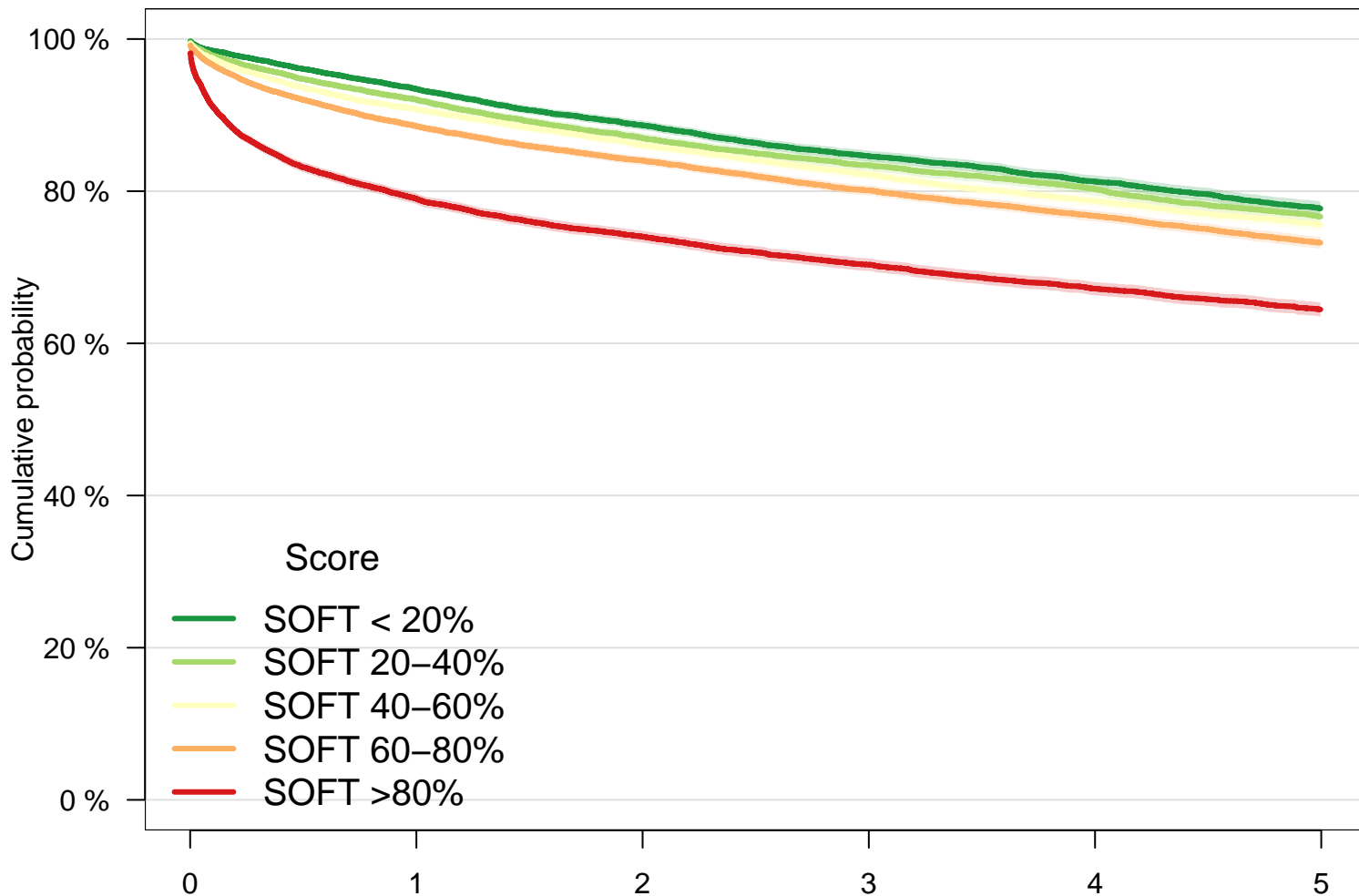
Score	Survival period (years)					
sRRI <20%:	12480	11006	9470	8097	6849	5736
sRRI 20-40%:	12362	10601	8848	7435	6256	5219
sRRI 40-60%:	12555	10554	8810	7451	6225	5146
sRRI 60-80%:	12395	10329	8574	7146	5928	4876
sRRI >80%:	12502	9635	7672	6143	4973	4021

Fig S1C. Patient survival, ETDRI



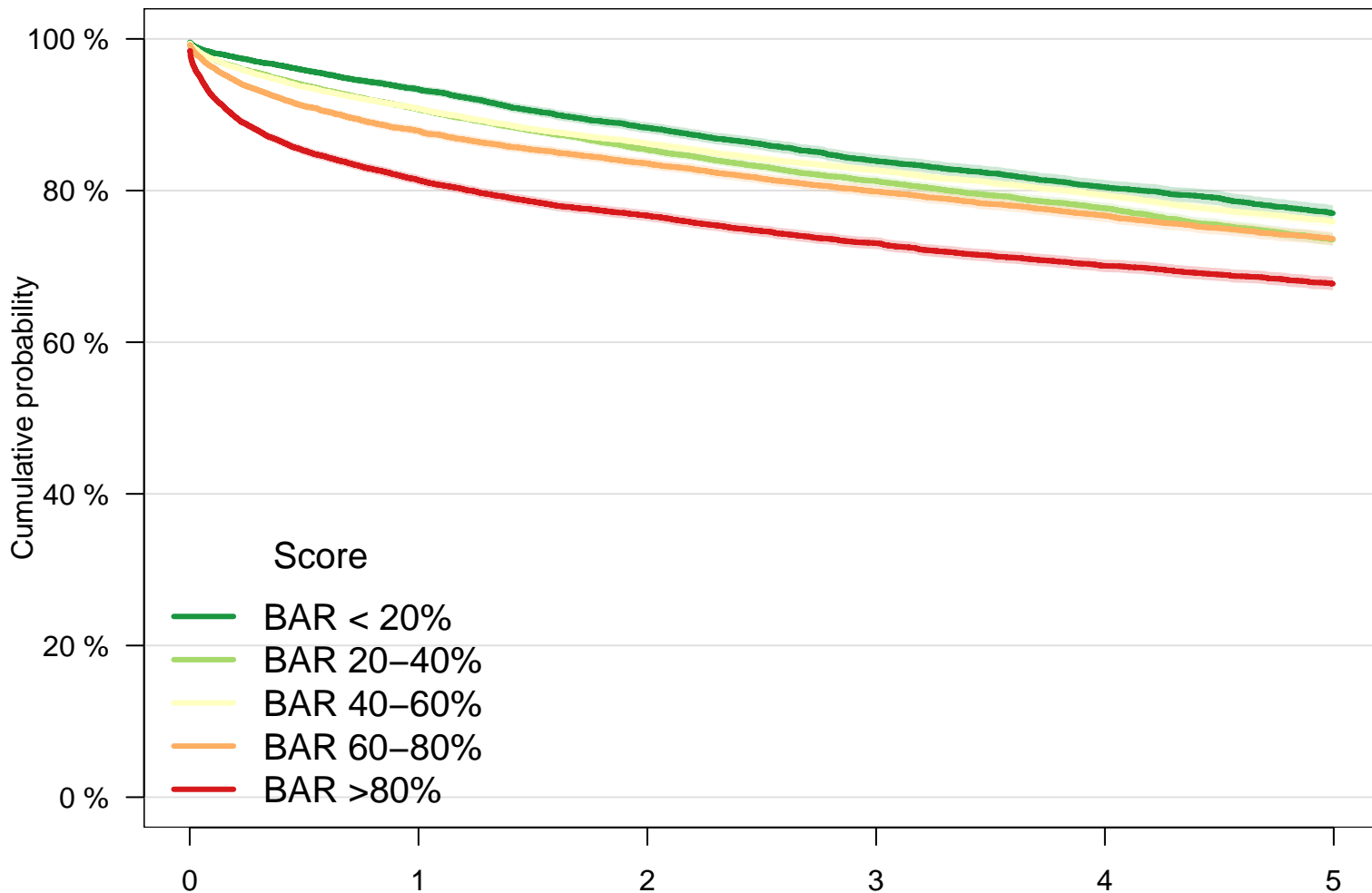
Score	Survival period (years)					
ETDRI <20%:	12457	10744	9181	7842	6637	5529
ETDRI 20–40%:	12465	10390	8469	6971	5740	4724
ETDRI 40–60%:	12450	10424	8694	7335	6144	5100
ETDRI 60–80%:	12485	10342	8533	7087	5810	4774
ETDRI >80%:	12437	10225	8497	7037	5900	4871

Fig S1D. Patient survival, SOFT



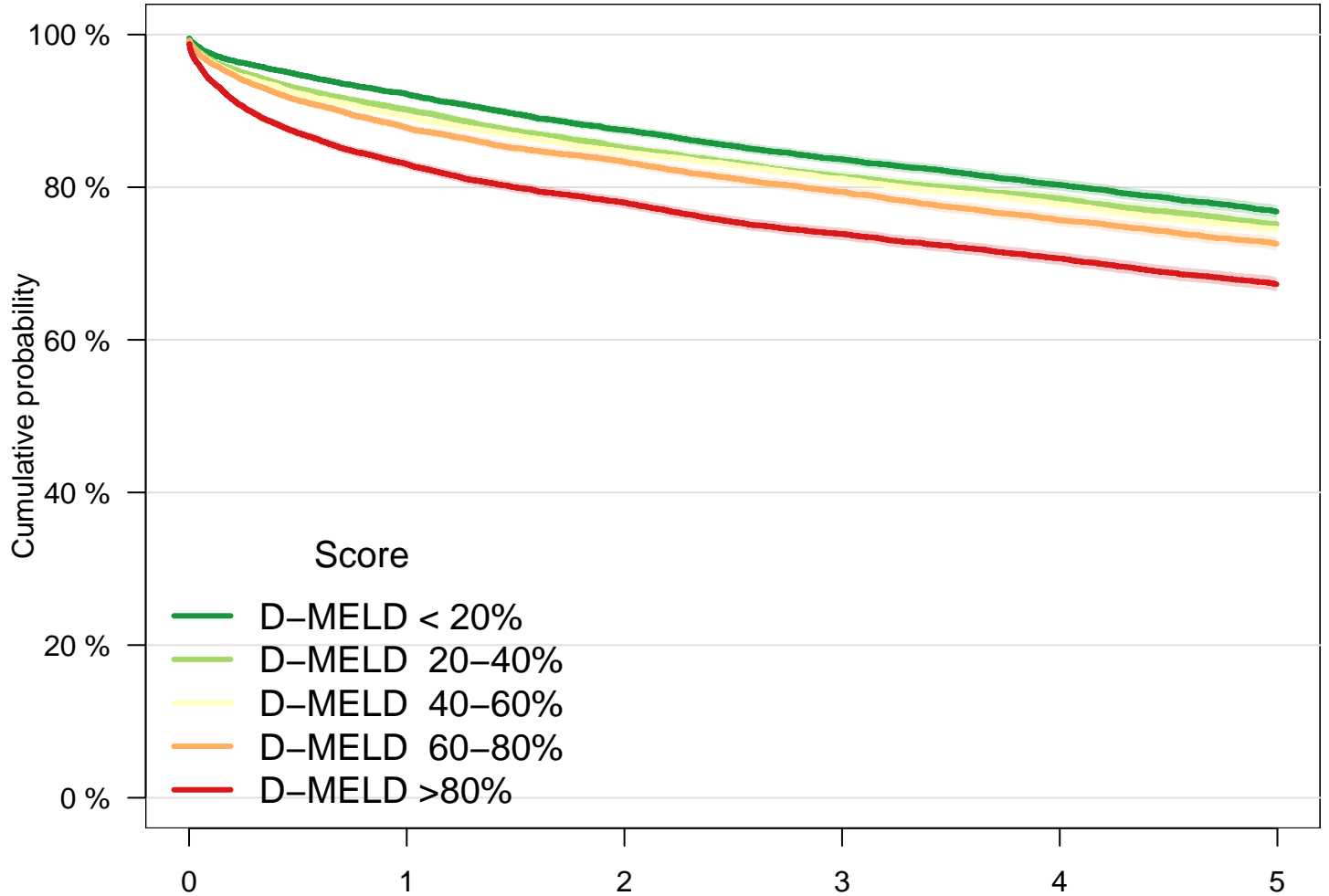
Score	Survival period (years)					
SOFT < 20%:	11149	9735	7994	6596	5346	4297
SOFT 20-40%:	11378	9919	8346	7083	6000	4958
SOFT 40-60%:	11386	9851	8288	7059	5922	4987
SOFT 60-80%:	15496	13049	11004	9251	7771	6468
SOFT >80%:	12885	9571	7742	6283	5192	4288

Fig S1E. Patient survival, BAR



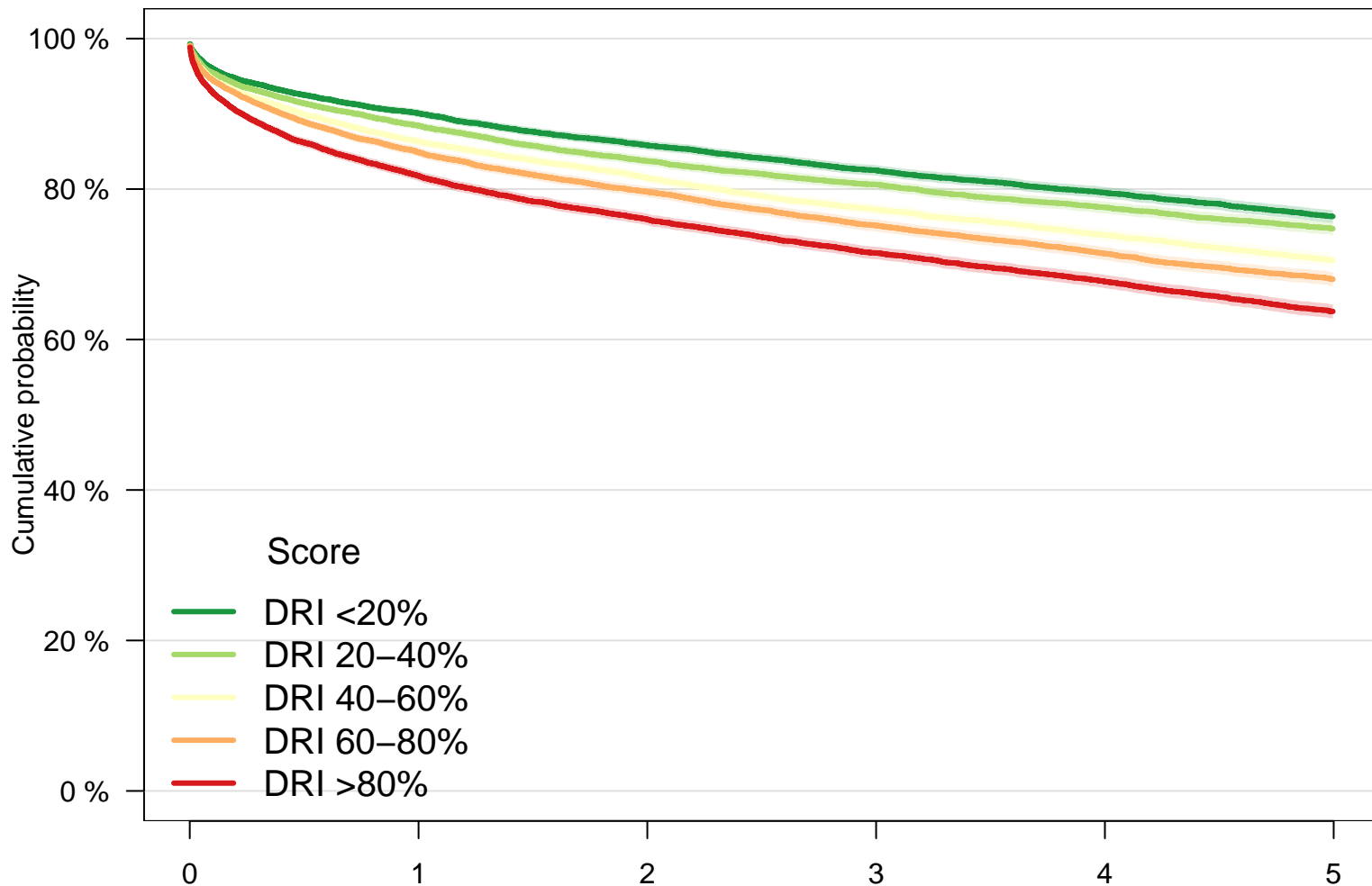
Score	Survival period (years)					
BAR < 20%:	7999	7072	5937	5001	4191	3461
BAR 20–40%:	14410	12311	10136	8430	6997	5711
BAR 40–60%:	14586	12652	10806	9344	7948	6748
BAR 60–80%:	11622	9681	8174	6826	5688	4648
BAR >80%:	13677	10409	8321	6671	5407	4430

Fig S1F. Patient survival, DMELD



Score	Survival period (years)					
D-MELD < 20%:	12333	10716	8957	7531	6308	5225
D-MELD 20–40%:	12575	10734	9008	7694	6462	5357
D-MELD 40–60%:	12458	10526	8785	7375	6187	5164
D-MELD 60–80%:	12438	10349	8659	7218	6009	4992
D-MELD >80%:	12490	9800	7965	6454	5265	4260

Fig S2A. Overall graft survival, DRI

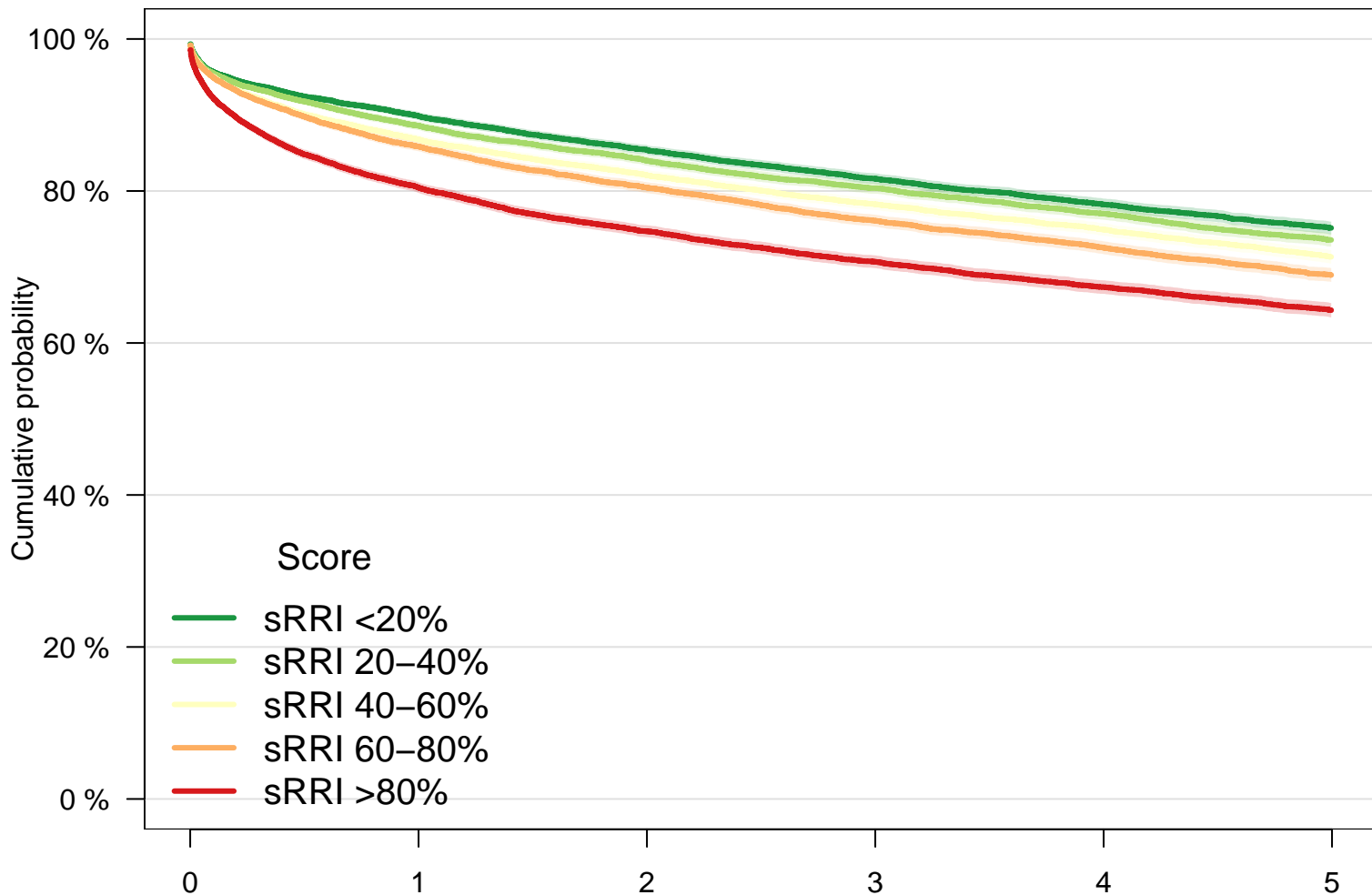


Score

- DRI <20%
- DRI 20–40%
- DRI 40–60%
- DRI 60–80%
- DRI >80%

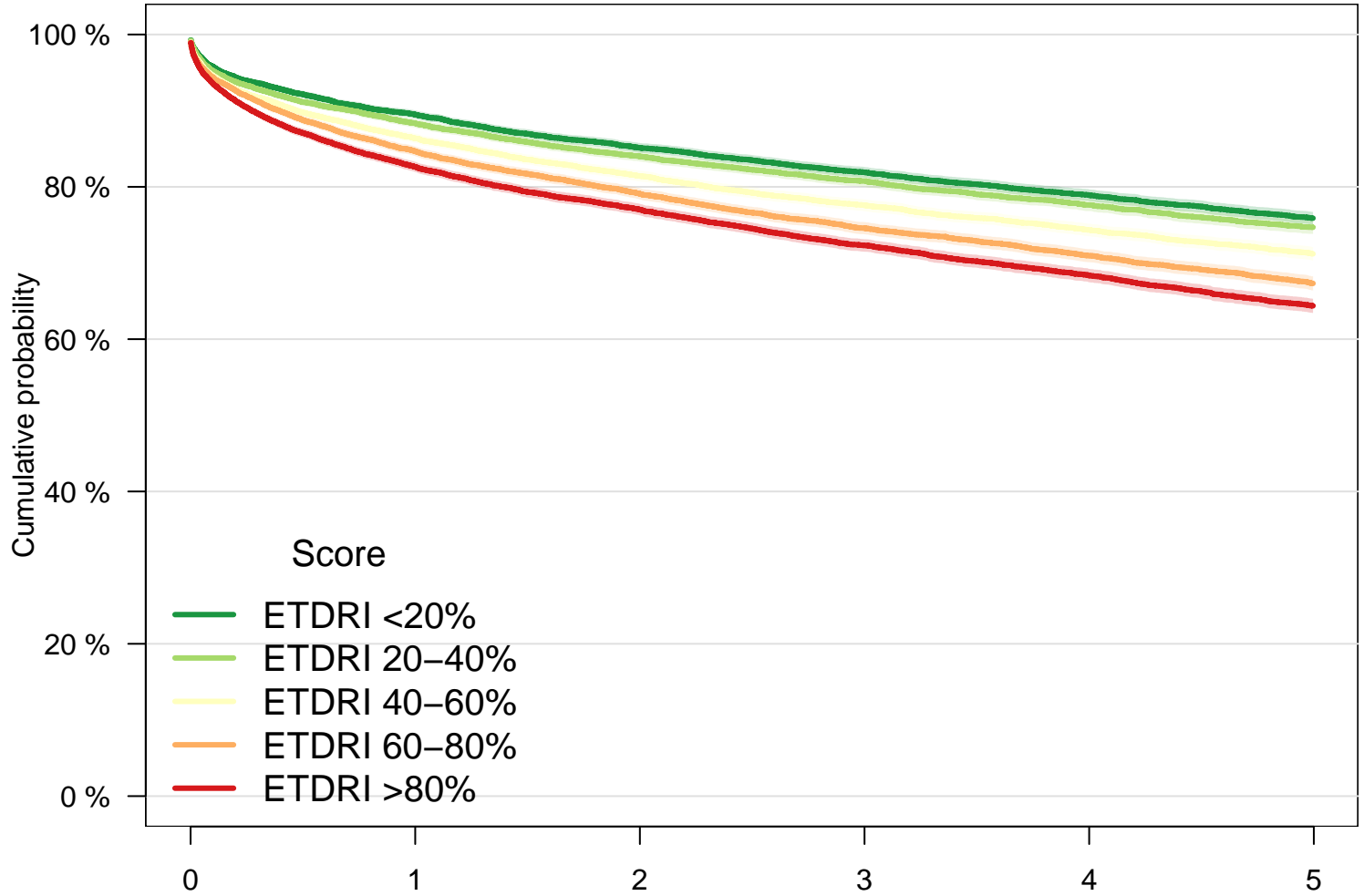
Score	Survival period (years)					
DRI <20%:	12456	10637	9018	7661	6421	5320
DRI 20–40%:	12463	10320	8526	7171	5973	4943
DRI 40–60%:	12470	10159	8376	6909	5698	4655
DRI 60–80%:	12447	9992	8179	6716	5513	4557
DRI >80%:	12458	9699	7950	6559	5464	4462

Fig S2B. Overall graft survival, sRRI



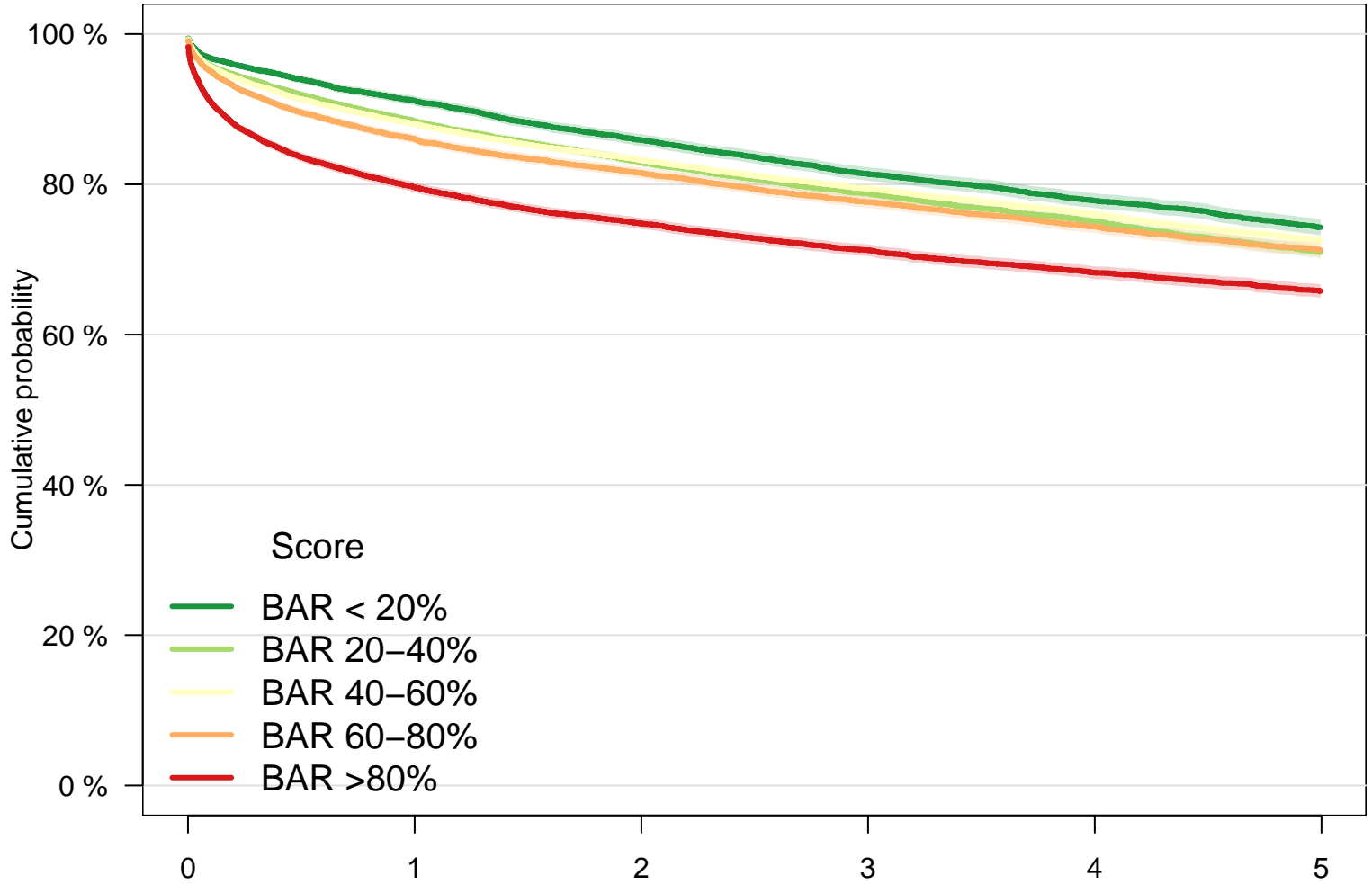
Score	Survival period (years)					
sRRI <20%:	12480	10655	9107	7750	6512	5434
sRRI 20-40%:	12362	10325	8567	7166	6015	5000
sRRI 40-60%:	12555	10308	8561	7208	5999	4933
sRRI 60-80%:	12395	10074	8326	6902	5710	4677
sRRI >80%:	12502	9445	7488	5990	4833	3893

Fig S2C. Overall graft survival, ETDRI



Score	Survival period (years)					
ETDRI <20%:	12457	10588	9010	7688	6491	5394
ETDRI 20-40%:	12465	10228	8303	6811	5594	4590
ETDRI 40-60%:	12450	10182	8456	7105	5940	4922
ETDRI 60-80%:	12485	10023	8216	6786	5536	4522
ETDRI >80%:	12437	9786	8064	6626	5508	4509

Fig S2D. Overall graft survival, BAR

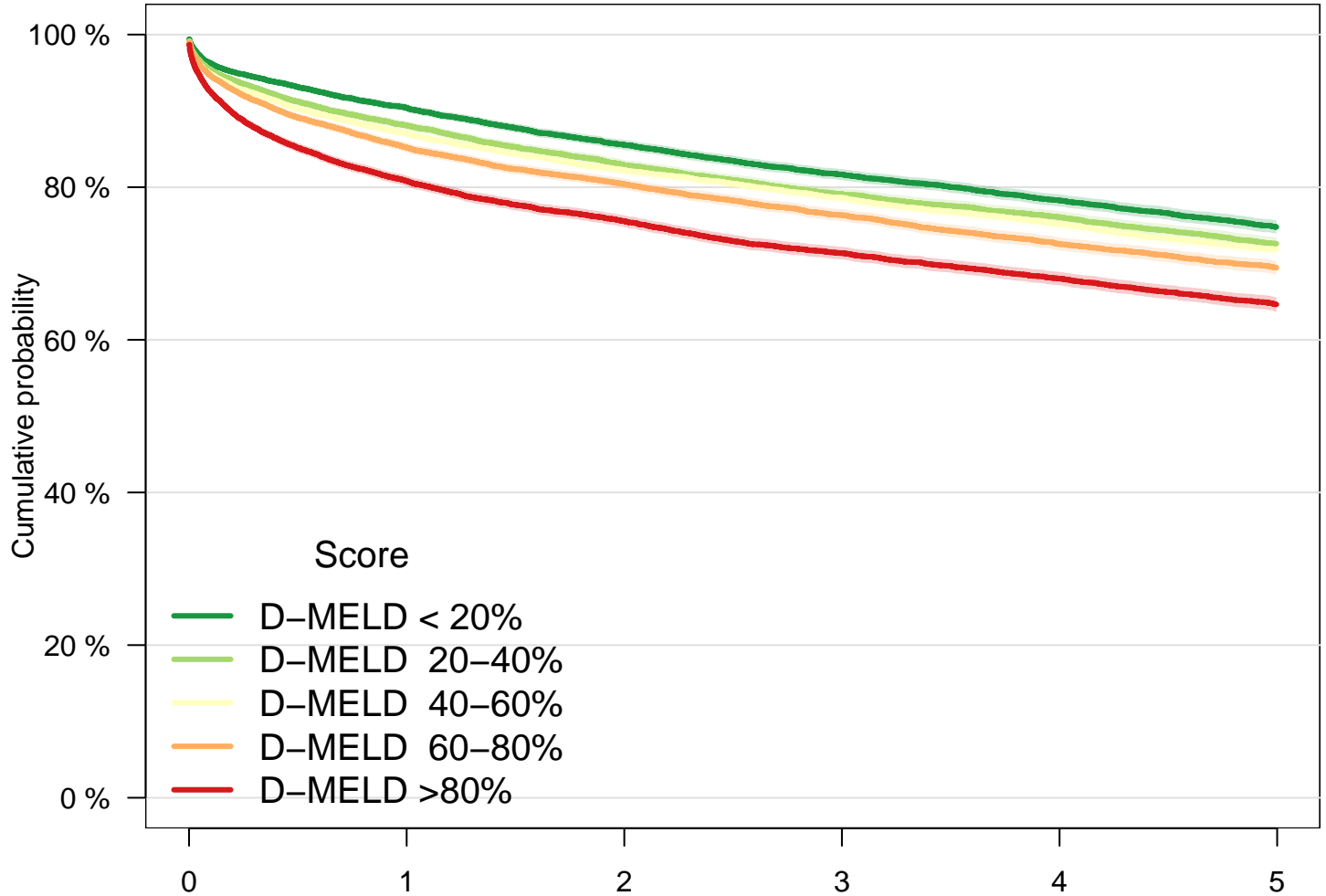


Score

- BAR < 20%
- BAR 20–40%
- BAR 40–60%
- BAR 60–80%
- BAR >80%

Score	Survival period (years)					
BAR < 20%:	7999	6901	5764	4832	4033	3319
BAR 20–40%:	14410	11987	9820	8145	6731	5474
BAR 40–60%:	14586	12267	10413	8954	7579	6401
BAR 60–80%:	11622	9474	7953	6605	5483	4465
BAR >80%:	13677	10178	8099	6480	5243	4278

Fig S2E. Overall graft survival, DMELD



Score

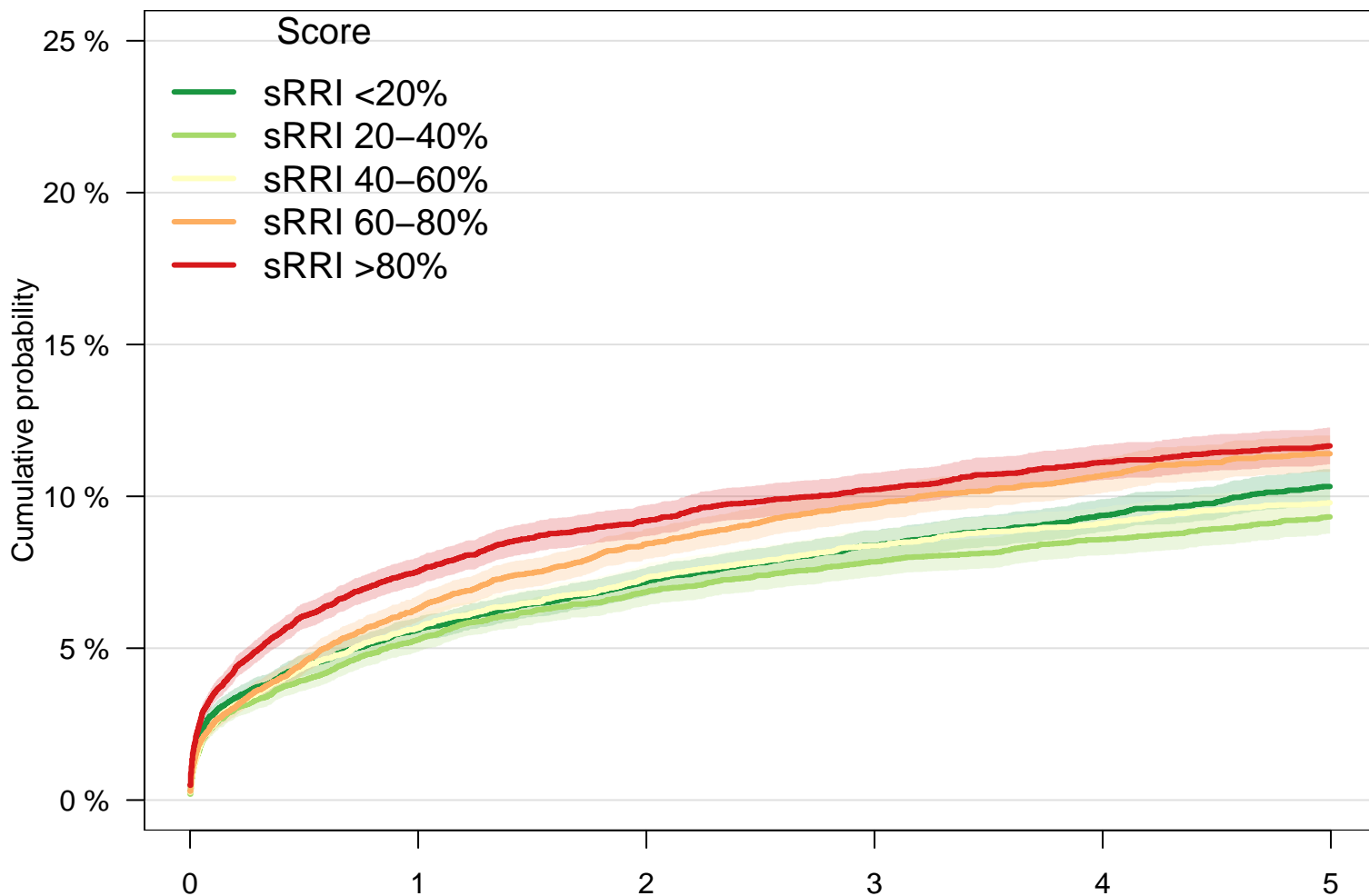
- D-MELD < 20%
- D-MELD 20-40%
- D-MELD 40-60%
- D-MELD 60-80%
- D-MELD >80%

Score

Survival period (years)

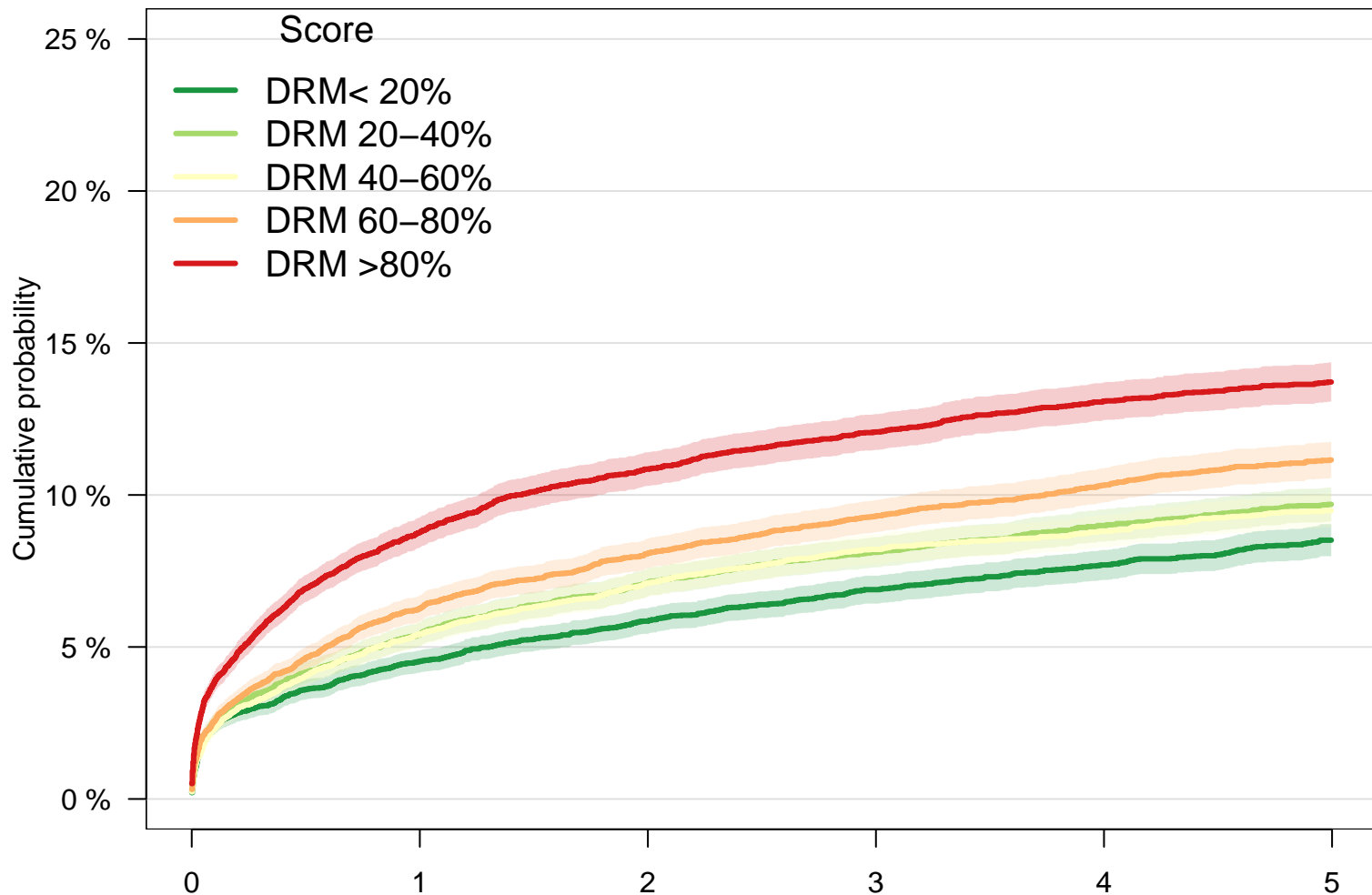
D-MELD < 20%:	12333	10501	8752	7341	6129	5071
D-MELD 20-40%:	12575	10479	8749	7447	6231	5144
D-MELD 40-60%:	12458	10258	8522	7128	5959	4942
D-MELD 60-80%:	12438	10035	8329	6901	5717	4728
D-MELD >80%:	12490	9534	7697	6199	5033	4052

Fig S3A. Death censored graft failure, sRRI



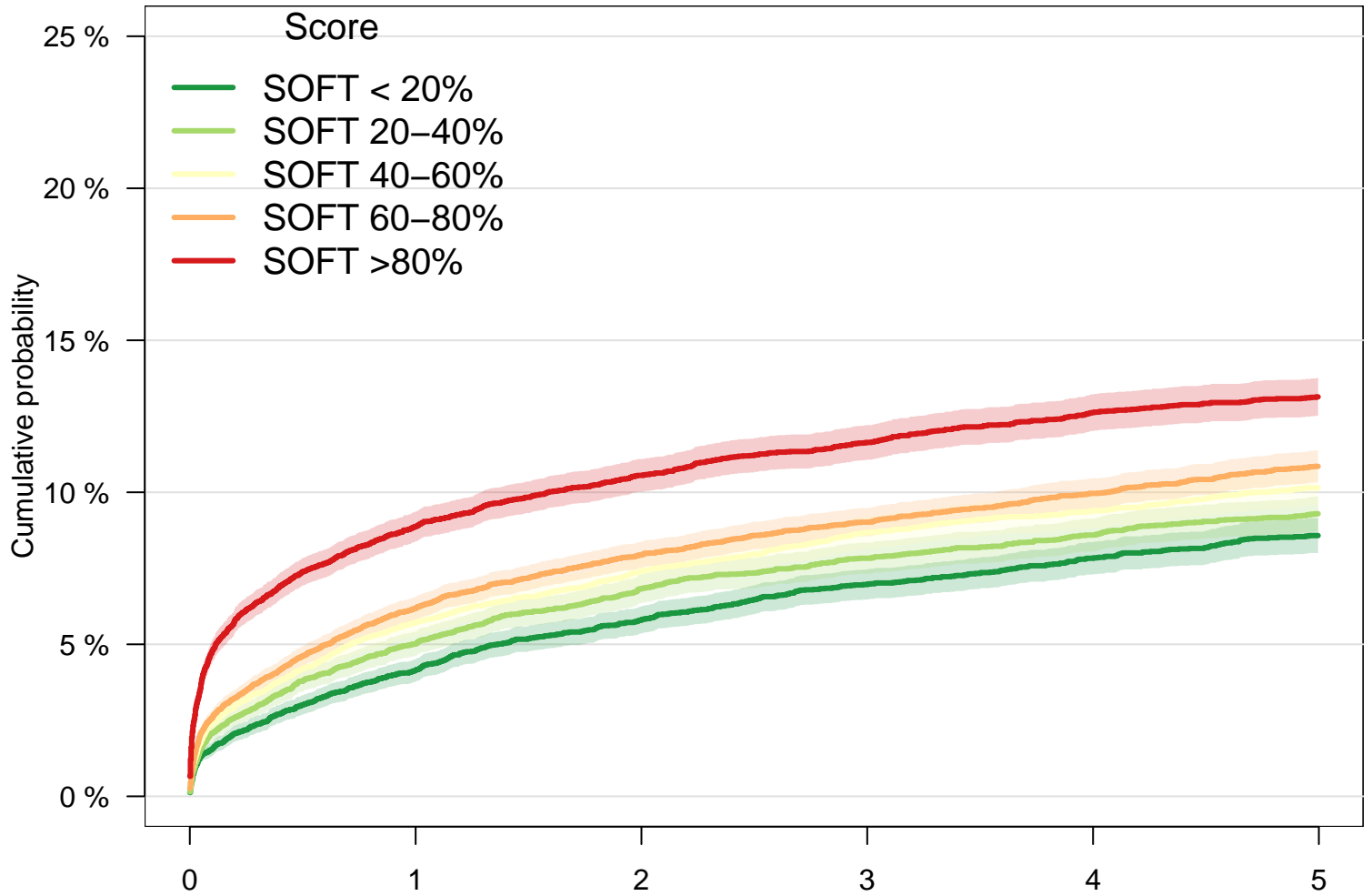
Score	Survival period (years)					
sRRI <20%:	12480	10655	9107	7750	6512	5434
sRRI 20–40%:	12362	10325	8567	7166	6015	5000
sRRI 40–60%:	12555	10308	8561	7208	5999	4933
sRRI 60–80%:	12395	10074	8326	6902	5710	4677
sRRI >80%:	12502	9445	7488	5990	4833	3893

Fig S3B. Death censored graft failure, DRM



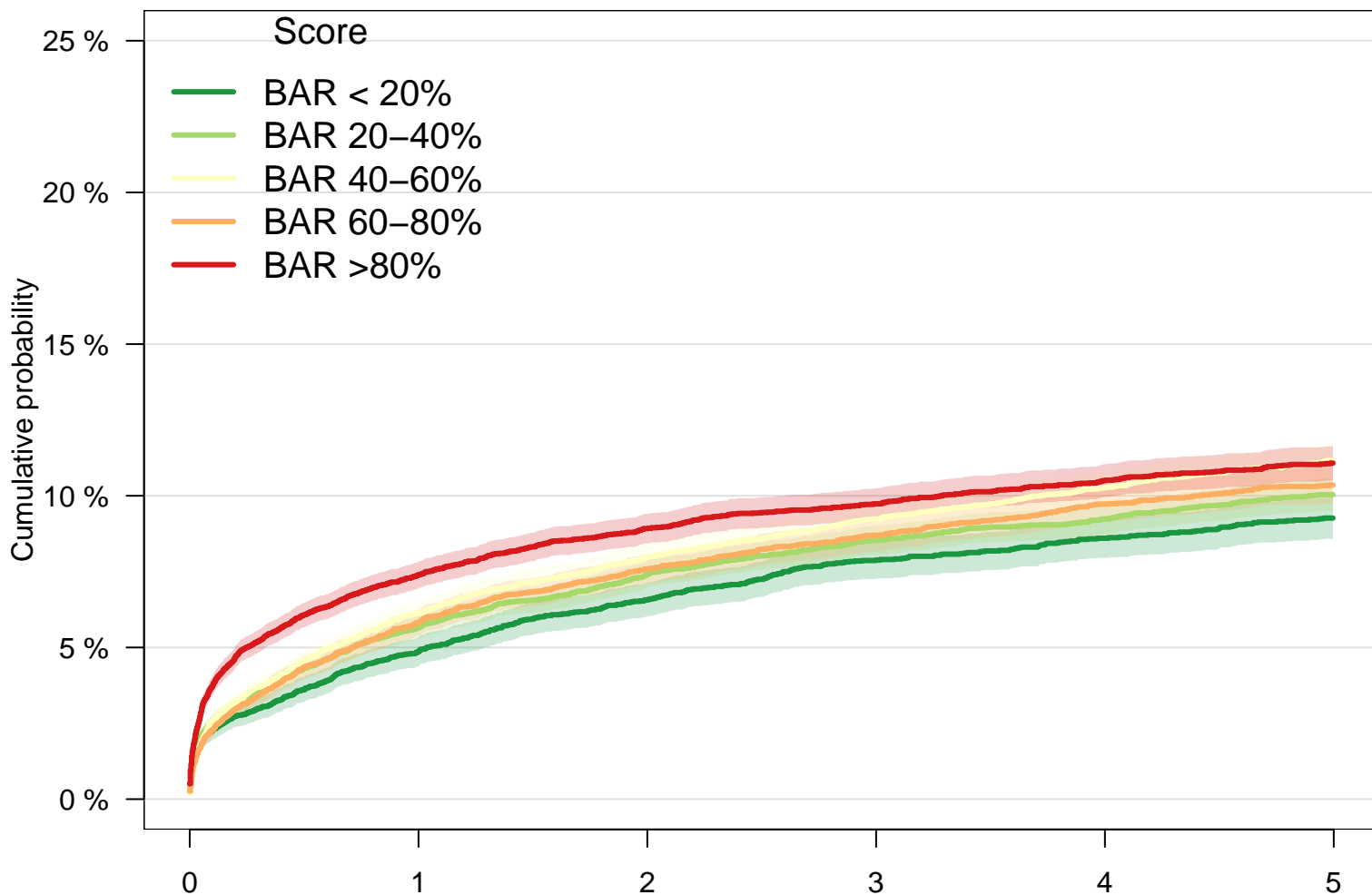
Score	Survival period (years)					
DRM < 20%:	12458	10722	9178	7838	6639	5585
DRM 20-40%:	12461	10390	8635	7268	6030	4984
DRM 40-60%:	12457	10330	8574	7131	5954	4897
DRM 60-80%:	12458	10091	8254	6824	5583	4540
DRM > 80%:	12460	9274	7408	5955	4863	3931

Fig S3C. Death censored graft failure, SOFT



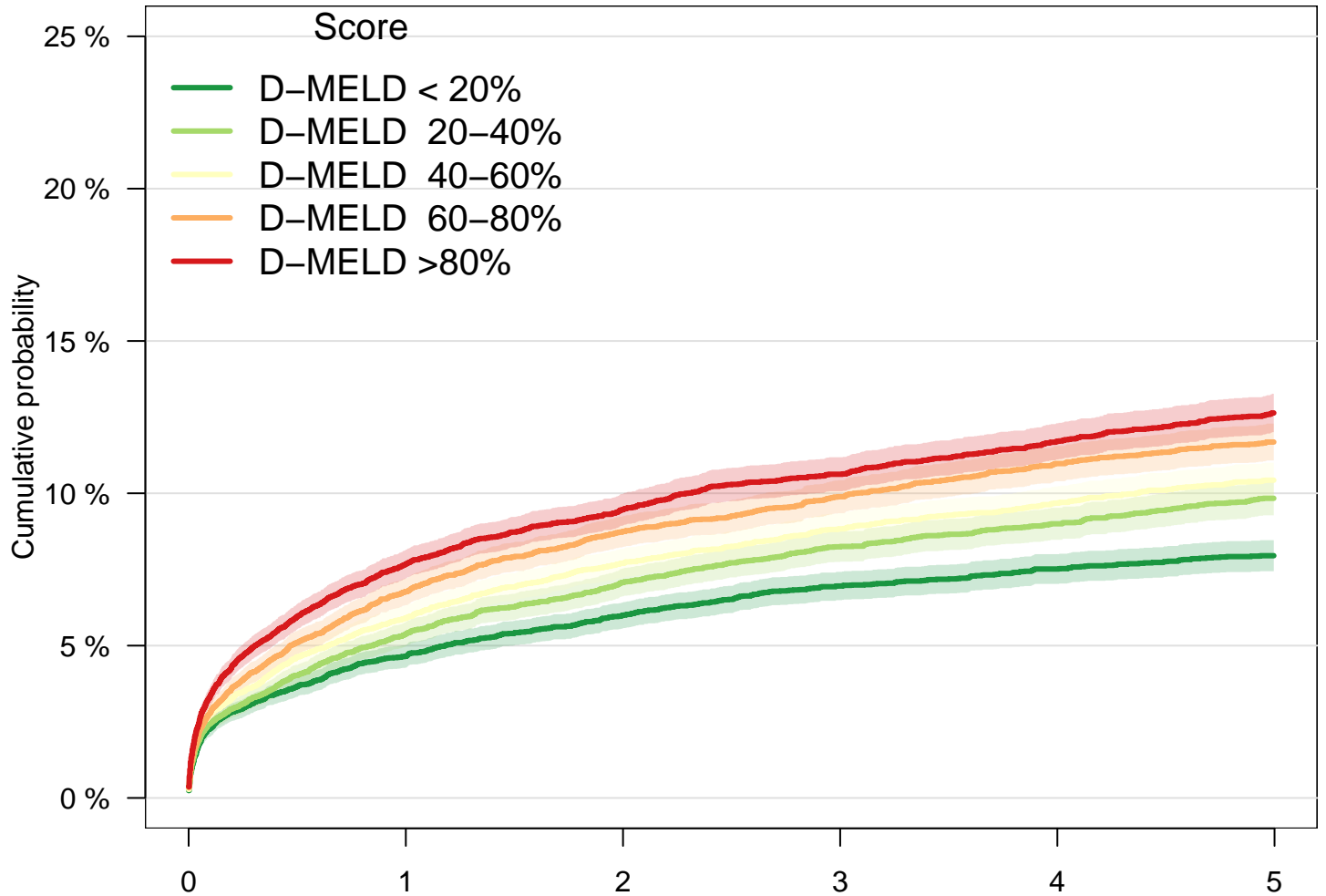
Score	Survival period (years)					
SOFT < 20%:	11149	9559	7806	6408	5173	4139
SOFT 20-40%:	11378	9659	8084	6838	5760	4744
SOFT 40-60%:	11386	9570	8018	6804	5691	4760
SOFT 60-80%:	15496	12701	10645	8914	7456	6190
SOFT >80%:	12885	9318	7496	6052	4989	4104

Fig S3D. Death censored graft failure, BAR



Score	Survival period (years)	0	1	2	3	4	5
BAR < 20%:	7999	6901	5764	4832	4033	3319	
BAR 20–40%:	14410	11987	9820	8145	6731	5474	
BAR 40–60%:	14586	12267	10413	8954	7579	6401	
BAR 60–80%:	11622	9474	7953	6605	5483	4465	
BAR >80%:	13677	10178	8099	6480	5243	4278	

Fig S3E. Death censored graft failure, DMELD



Score	Survival period (years)	0	1	2	3	4	5
D-MELD < 20%:	12333	10501	8752	7341	6129	5071	
D-MELD 20-40%:	12575	10479	8749	7447	6231	5144	
D-MELD 40-60%:	12458	10258	8522	7128	5959	4942	
D-MELD 60-80%:	12438	10035	8329	6901	5717	4728	
D-MELD > 80%:	12490	9534	7697	6199	5033	4052	